



City of  
Joondalup

# WASTE GUIDE 2018/19



The City will be  
implementing a three  
bin system in 2019.

[joondalup.wa.gov.au](http://joondalup.wa.gov.au)



# RECYCLING BIN

Emptied fortnightly



## What you **CAN** place in your yellow lid bin



- **Clean Plastic**  
Food and drink containers – plastic meat trays, plastic plant pots, rigid plastic containers
- **Clean Paper and cardboard**  
Milk and juice cartons, magazines, newspaper, egg cartons, junk mail
- **Clean Aluminium and steel**  
Food and drink cans, aerosols (completely empty/degassed), metal pots and pans, metal jar lids
- **Clean Glass**  
Food and drink bottles and jars, broken glass

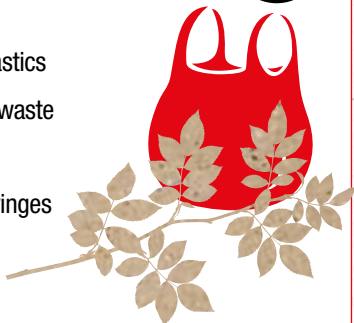


Place beside your recycling bin on collection day:  
1 x car battery; and  
1 x 5L container of used engine oil (in original container)  
Please place where the driver can see them.

## What you **CANNOT** place in your yellow lid bin



- Nappies or dog waste
- Plastic bags or soft plastics
- Garden waste or food waste
- E-waste and batteries
- Medical waste and syringes
- Clothing and textiles
- Ceramics
- Hazardous waste (asbestos, garden and household chemicals, household batteries, paint tins)
- Shredded paper



## Recycling tips

- 1 Keep recyclables loose and not in bags
- 2 Flatten your cardboard boxes and squash your plastic bottles and cans
- 3 Remove lids from all bottles – place plastic lids in your general waste bin
- 4 Rinse your items
- 5 Contact the City to upgrade to a 360L recycling bin at no additional charge.

If you are unsure about what can be recycled call 9400 4255 or email [info@joondalup.wa.gov.au](mailto:info@joondalup.wa.gov.au) for advice. Find your collection week on the My Bin Collection page of this guide.

**85%**

of the contents  
from a yellow lid bin is  
recycled.

# GENERAL WASTE BIN

The organic content of this bin gets composted.  
Emptied weekly.



**What you CAN place in your general waste (green lid) bin** 

- Food waste, scraps and leftovers
- Green waste (grass, small tree clippings and prunings, leaves)
- Hygiene products
- Nappies and dog waste
- General household waste
- Broken shoes, old rags, toys
- Ceramics
- Foam/styrene packaging

**What you CANNOT place in your general waste (green lid) bin** 

- Glass
- Hot or burning ash
- Old tyres
- Asbestos
- Batteries
- Bricks, concrete, sand and other building materials
- Household hazardous waste (pesticides, herbicides and chemicals, combustible liquid, paint or other solvents, motor oil)
- Aerosols
- Liquids

Your general waste bin lid will change to a red lid under the new three bin system coming in 2019.



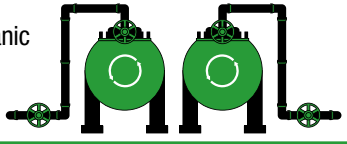
## Journey of your general waste bin

Your general waste bin is transported to the composting plant (Resource Recovery Facility).

**NO GLASS** – Whole or broken in your general waste bin. Help to make better compost, put all glass into your yellow lid recycling bin.



At the Resource Recovery Facility all organic contents are composted.



**52%**  
Composted.

The remaining non organic contents of your general waste bin is sent to landfill.



**48%**  
To landfill.

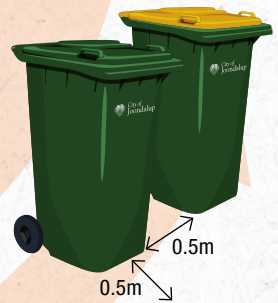
The 'No Glass' campaign is coordinated by Mindarie Regional Council covering 170,000 households across four member councils; City of Joondalup, City of Wanneroo, City of Vincent and Town of Victoria Park.

# GENERAL WASTE BIN

# MY BIN COLLECTIONS

On collection days please ensure your bins:

- Are out by 6.00am and away by 6.00pm
- Weigh no more than **70kg**
- Have the lids closed
- Have the bin handles and wheels facing your house
- Are half a metre in from the kerbside
- Are half a metre apart from each other



## Collection Calendar

Week one		Monday	Tuesday	Wednesday	Thursday	Friday
Put out	<span style="background-color: #008000; width: 20px; height: 20px; display: inline-block;"></span>	Duncraig	Kallaroo, Hillarys	Warwick, Kingsley	Mullaloo, Ocean Reef	Burns Beach, Joondalup, Kinross
	<span style="background-color: #ffff00; width: 20px; height: 20px; display: inline-block;"></span>	Edgewater, Marmion, Sorrento	Craigie, Padbury	Beldon, Greenwood	Heathridge, Woodvale	Connolly, Iluka, Currambine
Week two		Monday	Tuesday	Wednesday	Thursday	Friday
Put out	<span style="background-color: #008000; width: 20px; height: 20px; display: inline-block;"></span>	Edgewater, Marmion, Sorrento	Craigie, Padbury	Beldon, Greenwood	Heathridge, Woodvale	Connolly, Iluka, Currambine
	<span style="background-color: #ffff00; width: 20px; height: 20px; display: inline-block;"></span>	Duncraig	Kallaroo, Hillarys	Warwick, Kingsley	Mullaloo, Ocean Reef	Burns Beach, Joondalup, Kinross

Week One

Week Two

  Public Holidays   Garage Sale Trail   E-waste Drop-Off Day   Charity Clothing and Textiles Drop-off Day

### JULY 2018

S	M	T	W	T	F	S
1	2	3	4	5	6	7
8	9	10	11	12	13	14
15	16	17	18	19	20	21
22	23	24	25	26	27	28
29	30	31				

### AUGUST 2018

S	M	T	W	T	F	S
			1	2	3	4
5	6	7	8	9	10	11
12	13	14	15	16	17	18
19	20	21	22	23	24	25
26	27	28	29	30	31	

### SEPTEMBER 2018

S	M	T	W	T	F	S
						1
2	3	4	5	6	7	8
9	10	11	12	13	14	15
16	17	18	19	20	21	22
23	24	25	26	27	28	29
30						

### OCTOBER 2018

S	M	T	W	T	F	S
	1	2	3	4	5	6
7	8	9	10	11	12	13
14	15	16	17	18	19	20
21	22	23	24	25	26	27
28	29	30	31			

### NOVEMBER 2018

S	M	T	W	T	F	S
				1	2	3
4	5	6	7	8	9	10
11	12	13	14	15	16	17
18	19	20	21	22	23	24
25	26	27	28	29	30	

### DECEMBER 2018

S	M	T	W	T	F	S
						1
2	3	4	5	6	7	8
9	10	11	12	13	14	15
16	17	18	19	20	21	22
23	24	25	26	27	28	29
30	31					

### JANUARY 2019

S	M	T	W	T	F	S
		1	2	3	4	5
6	7	8	9	10	11	12
13	14	15	16	17	18	19
20	21	22	23	24	25	26
27	28	29	30	31		

### FEBRUARY 2019

S	M	T	W	T	F	S
					1	2
3	4	5	6	7	8	9
10	11	12	13	14	15	16
17	18	19	20	21	22	23
24	25	26	27	28		

### MARCH 2019

S	M	T	W	T	F	S
						1
2	3	4	5	6	7	8
9	10	11	12	13	14	15
16	17	18	19	20	21	22
23	24	25	26	27	28	29
30	31					

### APRIL 2019

S	M	T	W	T	F	S
	1	2	3	4	5	6
7	8	9	10	11	12	13
14	15	16	17	18	19	20
21	22	23	24	25	26	27
28	29	30				

### MAY 2019

S	M	T	W	T	F	S
			1	2	3	4
5	6	7	8	9	10	11
12	13	14	15	16	17	18
19	20	21	22	23	24	25
26	27	28	29	30	31	

### JUNE 2019

S	M	T	W	T	F	S
						1
2	3	4	5	6	7	8
9	10	11	12	13	14	15
16	17	18	19	20	21	22
23	24	25	26	27	28	29
30						

## Public Holidays bin services

No collection on **Christmas Day** and **New Years Day**. Both fall on a Tuesday, if your bin is normally collected on a Tuesday this will change to Wednesday, Wednesdays collections will move to Thursday, Thursday to Friday and Friday to Saturday. Mondays bin collections will remain the same. Collections change for two weeks only.

**Good Friday 2019** bin collections will be on Easter Saturday (affecting Burns Beach, Joondalup, Kinross, Connolly, Currambine and Iluka residents).

For further information about bin collections visit the City's website at [joondalup.wa.gov.au](http://joondalup.wa.gov.au)

# A-Z DISPOSAL GUIDE

Find disposal options for items that are not disposed of in your general waste, recycling, bulk hard waste or green waste collections.

## DROP OFF LOCATIONS

1	Tamala Park Recycling Centre or tip	7	CLAW environmental	12	Charity
2	Wangara Greens Recycling Centre	8	Department of Transport Hillarys Boat Harbour	13	Local Police
3	Charity clothing drop-off days	9	City of Joondalup Libraries	14	Northsands Resources
4	Check website for locations	10	Bulk Hard Waste	15	CMA Ecocycle
5	Coles public plastic recycling bin	11	General waste bin	16	Recycling bin
6	Bunnings – Joondalup/Warwick Grove Shopping Centre			17	Local pharmacy

## ITEMS LIST

<b>A</b>	1	Aerosol cans (full)	<b>M</b>	11	Manure/animal droppings	
	13	Ammunition, explosives		10	Mattress	
	11	Animal litter/bedding waste		11	Meat trays (polystyrene/ foam)	
	1	Asbestos		17	Medicine	
	1	Ash		12	Mirrors	
	1	Automotive fluids (coolant, brake fluid)		16	Mirrors – broken	
<b>B</b>	2	Batteries (household)	9	Mobile phones		
	1	Beanbag filling (balls)	<b>N</b>	11	Nappies (disposable)	
1	Bicycles	4		Nespresso pods		
	10	Books – good condition	<b>O</b>	1	Oil (cooking)	
	1	Bricks – reusable		<b>P</b>	7	Package polystyrene (packaging foam)
1	14	Bricks broken	1		Paint and solvents	
	5	Bubble wrap	1	Pesticides		
1	14	Building materials/waste	1	Petrol and diesel		
<b>C</b>	11	CD's/CD Cases	10	Picture frames – broken		
	1	Cameras	12	Picture frames		
	1	Car parts (gear boxes, engines, panels)	11	Pillows		
	1	Cassette tapes (audio and video)	5	Plastic bags (empty)		
	2	Christmas tree (live)	16	Plastic plant pots		
	1	Christmas tree (artificial)	1	Poisons		
	1	Chemicals (house, garden and pool)	10	Pool covers		
		1	Cleaning products (house, garden)	12	Prams/pushchairs/strollers	
	3	12	Clothing, textiles, blankets and fabrics	6	Printer Cartridges	
		16	Coat hangers (plastic)	<b>R</b>	1	10
	11	Coffee grounds	11		Rope	
	11	Coffee Pods (except Nespresso)	10	Reticulation pipe		
	1	Computers, components, accessories	11	Rubber mats		
	14	Concrete	1	Rugs		
	9	Corks – wine/champagne	<b>S</b>	1	Scrap metal (sheeting, wire)	
	12	Crockery/ceramics (plates, cups)		12	Shoes	
	11	Crockery/ceramics broken	1	Smoke alarms		
	1	Cutlery (metal)	11	Soap		
<b>D</b>	12	Doonas/duvets	14	Soil		
	11	Drop Sheets	9	Spectacles		
	1	DVDs/DVD player	12	Sporting goods		
<b>E</b>	1	Electrical appliances	12	Suitcases		
	1	Electronic devices (e-waste)	4	Syringes and needles		
	1	Electric blankets	<b>T</b>	1	Tarpaulins	
8	EPIRBS	1		Timber (treated)		
<b>F</b>	1	Fire extinguishers	11	Toiletries (toothpaste, toothbrushes)		
	8	Flares	12	Tools		
	6	Fluorescent globes	1	Tools – electrical		
	12	Furniture	10	Toys – broken		
	10	Furniture (broken)	12	Toys		
<b>G</b>	1	Gas cylinders (LPG/propane/butane)	16	Tupperware/food containers		
	5	Glad wrap (clean)	1	Tyres		
	1	Guttering	<b>V</b>	1	Vacuum cleaner	
11	Heat packs – gel/wheat	11		Vacuum cleaner dust		
	10	Hose piping (reticulation or pipe)	1	Video player/tapes		
<b>I</b>	1	Insecticides	1	Vinyl		
	6	Ink cartridges	<b>W</b>	10	Wheelbarrow (tyre removed)	
<b>J</b>	12	Jewellery		5	Wine bladders (pouder removed)	
	1	Kerosene	10	Wood (broken furniture, cut-offs)		
<b>L</b>	11	Laminated paper	1	Wooden pallets		
	1	Light globes	<b>X</b>	15	X-ray films	
	16	Lunch boxes				

For more items please see the full A-Z list on the City's website at [joondalup.wa.gov.au](http://joondalup.wa.gov.au)

# BULK HARD WASTE

Residents are encouraged to offer their unwanted items, that are in good condition, for reuse on [payitforwardaustralia.net](http://payitforwardaustralia.net) or list for free on [gumtree.com.au](http://gumtree.com.au)

The City provides the following services per household, per financial year, per refuse charge:

- 1x white goods collection of up to **four** items
- 1x mattress collection of up to **six** items
- 1x three cubic metre skip bin or lounge suite collection service

Plus an additional skip bin at a reduced City rate. Book online via the City's website.

## Service Information

- Unused bulk hard waste services cannot be carried over to future financial years.
- Break up large items to make better use of the skip
- Skip bins cannot be placed on artificial turf or stencilled paving
- Skip bins will be placed on the grass verge near the driveway
- Skip bins may be delivered full, and will be emptied by 5.00pm on the day of delivery

For more information visit [joondalup.wa.gov.au](http://joondalup.wa.gov.au) or phone **9449 3363**.



## Recycling Statistics

90% of mattresses are recycled  
+  
80% of white goods are recycled  
+  
53% skip bin waste recycled  
=  
**56%**  
average recycling rate of all bulk hard waste collected.

## What can I put in my skip?

### You CAN place the following in your skip

Large bulky household items including:

- Household furniture
- Floor coverings (e.g. carpets/underlay)
- Bed frames/headboards (dismantled)
- Oversized cardboard packaging
- Old bicycles/exercise equipment
- BBQs/outdoor furniture
- Hot water systems

### You CANNOT place the following in your skip

- Green waste/turf (real)
- Liquid waste
- Bagged waste
- Car parts/tyres
- Glass items (windows/glass panes, tables, mirrors)
- Asbestos/other fencing
- Food waste
- White goods
- Mattresses
- Household hazardous waste (including paints, garden or household chemicals, fire extinguishers, gas cylinders etc.)
- E-waste such as televisions, computers, monitors, mobile phones
- Construction/demolition or renovation waste including bathroom suites, basins, toilets, sand, rubble, concrete pavers etc.

Do not fill the skip above the fill line.



# GREEN WASTE

There are three different ways to recycle your green waste in the City. Use all three or choose what suits you best.



## Bulk green waste verge collection



You CAN put out:



- Garden prunings
- Tree loppings (less than 1.5m in length)
- Palm leaves
- Tree limbs, branches, small logs (1.5m in length)

Note: branches more than 150mm in diameter must be cut into 300mm lengths.

You CANNOT put out:



- Building rubble
- Treated timber/pine
- Pallets
- Sand or soil
- Railway sleepers
- Processed wood
- Bagged waste or boxed greenwaste

To view the collection schedule please see the Bulk Green Waste Collections page of this guide or visit [joondalup.wa.gov.au](http://joondalup.wa.gov.au)

Remember:

- All bulk green waste must be placed loose on the verge with no use of boxes, bags or containers.
- All non-green waste items will not be collected and could be classed as littering.
- Bulk green waste will be shredded and mulched therefore, it cannot be contaminated with any other waste.



## Smaller loose green waste in your general waste bin



If it needs to be bagged or boxed – bin it. Place:

- Grass clippings
- Fallen leaves
- Small prunings

into your general waste bin.

These greens are processed at the composting plant (Resource Recovery Facility).

The City will be delivering a Green waste bin to households in 2019.



## Take your green waste to the greens recycling facility



Wangara Greens Recycling Facility  
70 Motivation Drive, Wangara  
Open weekend and public holidays only.

- All green waste – see tip voucher for item sizing
  - Turf – with soil removed
- Charges will apply without vouchers.

All trailers must be covered by tarpaulins and secured with rope when collecting mulch.



# BULK GREEN WASTE COLLECTIONS



Bulk green waste can be placed on verges no earlier than 10 days before the collection date. Early set out will result in a fine.

Illegal dumping of rubbish should be reported to City Rangers on 1300 655 860.

Waste must be placed away from power domes, water meters, artificial turf and stencilled paving.

Do not place waste in City parks, vacant blocks or on other people's verges.



2018		
Map area	Suburb	Collection date
1	Duncraig (1)	23 July
2	Duncraig (2)	30 July
3	Duncraig (3)	6 August
4	Duncraig (4)	13 August
5	Duncraig (5)	20 August
6	Marmion	27 August
7	Marmion/Sorrento	3 September
8	Sorrento	10 September
9	Kingsley (1)	17 September
10	Kingsley (2)	24 September
11	Kingsley (3)	1 October
12	Kingsley (4)	8 October
13	Padbury (1)	15 October
14	Padbury (2)	22 October
15	Padbury (3)	29 October
16	Hillarys (1)	5 November
17	Hillarys (2)	12 November
18	Kallaroo (1)	19 November
19	Kallaroo (2)	26 November
20	Craigie (1)	3 December
21	Craigie (2)	10 December

No collection from Monday 17 December 2018 to Monday 14 January 2019

2019		
Map area	Suburb	Collection date
22	Mullaloo (1)	14 January
23	Mullaloo (2)	21 January
24	Beldon	28 January
25	Woodvale (1)	4 February
26	Woodvale (2)	11 February
27	Woodvale (3)	18 February
28	Edgewater	25 February
29	Heathridge (1)	4 March
30	Heathridge (2)	11 March
31	Ocean Reef (1)	18 March
32	Ocean Reef (2)	25 March
33	Connolly	1 April
34	Joondalup (1)	8 April
35	Joondalup (2)	15 April
36	Currambine	22 April
37	Iluka/Burns Beach	29 April
38	Kinross	6 May
39	Greenwood (1)	13 May
40	Greenwood (2)	20 May
41	Greenwood (3)	27 May
42	Greenwood (4)	3 June
43	Warwick (1)	10 June
44	Warwick (2)	17 June

## Missed your collection or can't wait?

Drop off your green waste at the Wangara Greens Recycling Facility on weekends and public holidays. A valid City of Joondalup tipping voucher must be presented or charges will apply. Please note: no refunds can be processed if you do not use a valid voucher.

Waste management online  
Search for your street address using the 'waste management search tool' online at [joondalup.wa.gov.au](http://joondalup.wa.gov.au) and check your community newspaper for weekly adverts.



# CONTACTS AND CHANGE IN SERVICES

## Waste Disposal Centres

### City of Stirling

Balcatta Waste Transfer Station, Recycling Centre and Household Hazardous waste  
238 Balcatta Rd, Balcatta,  
open 7 days  
T: 9345 8555

### CLAW Environmental

Expanded Polystyrene (EPS)  
5 Forge St, Welshpool  
T: 9333 4888

### Mindarie Regional Council

Tamala Park Tip, Recycling Centre and Household Hazardous waste  
1700 Marmion Ave,  
Tamala Park, open 7 Days  
[mrc.wa.gov.au](http://mrc.wa.gov.au)  
T: 9306 6303

### City Libraries – Joondalup, Woodvale, Bunnings Joondalup and Warwick Shopping centre

Light globes and printer cartridges

### NorthSands Resources

Sand, concrete, bricks, limestone blocks, tiles, wood pallets  
LOT 6 Wesco Rd, Nowergup  
T: 9407 4445

### City of Joondalup Libraries – Joondalup, Duncraig, Whitford, Woodvale and Bunnings – Joondalup

Mobile phones and household batteries

### Wangara Greens Recycling Centre

Green garden waste only – open on weekends and public holidays  
70 Motivation Dr, Wangara  
T: 9405 5000

## Charity Partners

If your items are in good condition and reusable, give to charities. These charities will make home collections for larger household furniture items.

### Anglicare

[anglicarewa.org.au](http://anglicarewa.org.au)  
T: 6253 3535

### Salvos

[salvosstores.com.au](http://salvosstores.com.au)  
T: 13 72 58

### Vinnies

[vinnies.org.au](http://vinnies.org.au)  
T: 6323 7500

### City of Joondalup

For damaged, lost or stolen bins and waste enquiries call 9400 4255 or visit [joondalup.wa.gov.au](http://joondalup.wa.gov.au)

## Bin Collection Contractor

### SUEZ

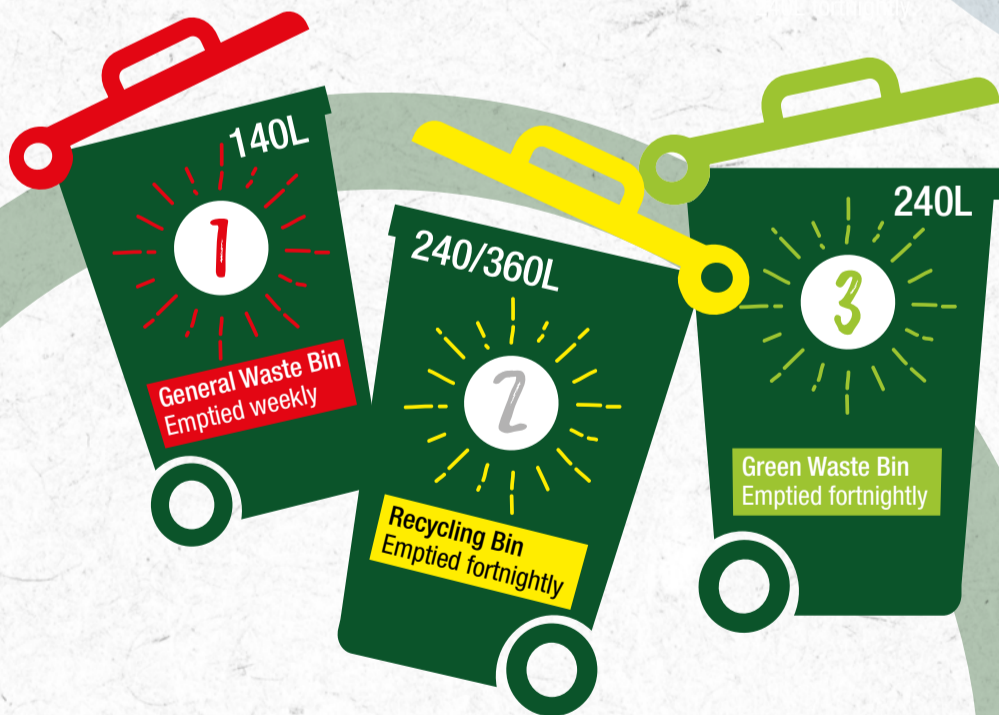
To report a missed bin call 9350 7196

### Cleanaway

**Bulk hard waste** service bookings can be made online via the City's website or call 9449 3363

## Change in services

The City is introducing a third bin for green waste starting in January 2019.



The new waste service will consist of three bins:

There will be no change to bulk greens waste verge collection.

This change in service will help reduce costs to both the City and residents.

For more details please read the frequently asked questions on the City's website. For further queries please call the Infrastructure Services Customer Relations Team on **9400 4255**.

## GREEN WASTE AND MULCH 2018/19

### TIPPING INFORMATION

Tipping vouchers can be found at the back of the Waste Guide which was delivered to letterboxes early July. This is a special edition guide for information only.

Tipping vouchers can be redeemed at the Wangara Greens Recycling Facility  
70 Motivation Drive, Wangara WA 6065  
Open 8.00am – 4.45pm weekends and public holidays only.

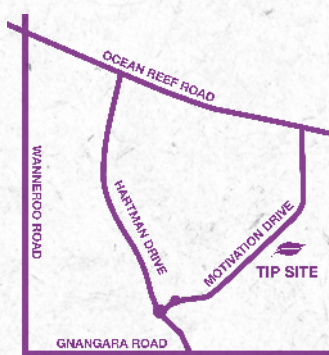
Closed weekdays, Good Friday, Christmas and New Year's Day

**No EFTPOS – Cash and vouchers only**

Each voucher covers one standard entry for a car and trailer or a car with up to 500kg of clean greens. A tonnage fee will be charged for additional clean greens.

Clean greens are: small prunings, grass clippings, branches up to 1.5m long no other materials will be accepted.

**Loads contaminated with sand, rocks and bricks will not be accepted.**



#### FREE MULCH (Recycled shredded green waste)

Mulching your garden lowers evaporation and water requirements, aids water dispersal and can help to reduce weeds.

#### Health Warning

Garden mulch contains micro-organisms that may be harmful to your health. Always wear gloves and wash your hands afterwards. Keep mulch damp whilst in use and avoid inhaling the mix.

Without vouchers the cost for:

- tipping is \$31.00 per (6x4) trailer load (up to 500kg)
- mulch is \$31.00 per cubic metre (6x4) trailer load.

All trailers must be covered by a tarpaulin and rope for mulch collection.



**City of Joondalup** | 90 Boas Avenue Joondalup WA 6027 | PO Box 21 Joondalup WA 6919  
T: 9400 4255 F: 9300 1383 | [joondalup.wa.gov.au](http://joondalup.wa.gov.au)

*This document is available in alternate formats upon request.*