

Artists Reviewed**Potential Artists: Visual Art Commission**

Artistic approach medium/ genre/ style.
(* in Collection already)

Urban realism

1. Marcus Beilby: realism painting of urban space http://www.perthgalleries.com.au/artists/marcus_beilby/54/
2. Garry Pumfrey: realism painting of urban space http://www.turnergalleries.com.au/stockroom/stock_pumfrey.php
3. Kevin Robertson: realism painting of urban space <http://www.galeriedusseldorf.com.au/GDArtists/Robertson/KRExh2010/KRExhGD2010/index.html>

Photography

4. Christopher Young: urban interior space photography http://www.zebra-factory.com/1_create-chris.html
5. Rebecca Dagnall: gothic suburban natural landscape photography digitally manipulated
http://www.turnergalleries.com.au/artists/rebecca_dagnall.php
6. Bo Wong: photography of people, landscape <http://bowong.com.au/>
7. Tarryn Gill and Pilar Mata Dupont: iconic Australia, sport, military and heroism <http://www.tarrynandpilar.com/>

Symbolism/ other

8. Moira de la Hunty: painterly realism in black and white heavy with symbols and layers of meaning
9. Susana Castleden*: topographical and map/mark making <http://www.galeriedusseldorf.com.au/GDArtists/Castleden/SCExh2011/index.html>
10. Judy Rogers*: domestic life and suburbia, drawings on wood http://www.perthgalleries.com.au/artists/judy_rogers/33/

Painterly abstraction

11. Merrick Belyea*: moody painterly landscape <http://www.galleryeast.com.au/painting/belyea/main.htm>
12. Alan Muller: aerial night landscapes of Perth and suburban scenes in painterly realism (note not to include more cartoony works, also has local link) <http://www.galleryeast.com.au/painting/muller/main.htm>
13. Jo Darbyshire*: painterly landscapes and underworld scenes <http://www.jodarbyshire.com/>
14. Felicity Sivewright*: patterned delicate abstracted paintings http://www.emerge-art.com.au/felicity_sivewright

Indigenous

15. Lindsay Harris: Nyoongar artist using resin and ochres, bold elegant abstraction http://www.emerge-art.com.au/lindsay_harris
16. Peter Farmer: contemporary Nyoongar artist using x-ray styles <http://www.gdef.com.au/content/artists/Peter+Farmer/>
17. Sandra Hill: graphical realistic paintings exploring Indigenous heritage <http://www.indigenart.com.au/Dynamic/work/artist.asp?artistid=91>
18. Christopher Pease: contemporary Nyoongar artist exploring colonisation. <http://www.gdef.com.au/content/artists/Chris+Pease/> (Chris' work is now over \$40,000)

Painterly realism

19. Penny Bovell: landscape/ skyscapes <http://www.facebook.com/people/Penny-Bovell/100000380220438>
20. Gregory Pryor: plants, natural environment and landscapes in painting and multi-media <http://www.listergallery.com.au/> (may be too expensive)
21. Ron Nyisztor*: still life with urban building materials <http://nyisztor.com.au/default.asp?id=artists&ref=Nyisztor>
22. Jill Kempson*: naïve landscapes and figures <http://www.galeriedusseldorf.com.au/GDartists/Kempson/JKExh2011/JillKempsonExhGD2011/index.html>
23. Richard Gunning: interior spaces <http://www.galeriedusseldorf.com.au/GDartists/Gunning/RGExh2008/index.html>

Wall based works/ sculptural

24. Holly Grace: silhouetted images cast into glass, natural environment and people <http://www.hollygrace.com/>
25. Tony Windberg: forest scenes carved into laminate on curved stretchers <http://www.galleryeast.com.au/painting/windberg/main.htm>
26. Paul Caporn: sculptural works that often use industrial/urban materials/ subject matter http://www.turnergalleries.com.au/stockroom/stock_caporn.php
27. Nien Schwarz: geography, mapping and landscape http://www.turnergalleries.com.au/exhibitions/08_schwarz.php

28. Holly Story: textile artist using natural materials exploring landscape and place http://www.turnergalleries.com.au/artists/holly_story.php

Sculpture

29. Therese Howard: cast bronze still life sculptures <http://www.galleryeast.com.au/sculptur/howard/main.htm>
30. Sarah Elson: silver cast natural plant forms http://www.galeriedusseldorf.com.au/GDArtists/Elson/SE_Exh2011/SElsonExhGD2011/index.html
31. Bruce Slatter: miniature models of urban spaces
http://www.galeriedusseldorf.com.au/GDArtists/SlatterBruce/BS2010/BSlatter_TableLand/index.html
32. Bennett Miller: sculptor and installation artist working with sport and current affairs <http://www.artabase.net/artist/1355-bennett-miller>
33. Darius Kowal: sculptor and installation artist

Hard edge abstraction

34. Galliano Fardin: painterly geometric abstraction, environmental subject matter
<http://www.galeriedusseldorf.com.au/GDArtists/Fardin/GFExh2010/GFardinExhGD2010/index.html>
35. Trevor Richards*: geometric abstraction with restricted palette (more suited to public art)
http://www.turnergalleries.com.au/stockroom/stock_richards.php
36. Helen Smith* & Jeremy Kirwan-Ward*: (more suited to public art) painterly and geometric abstraction
http://www.artgallery.wa.gov.au/exhibitions/Wall_works.asp
37. Jurek Wybraniec: (more suited to public art) materiality and geometric abstraction <http://www.gdef.com.au/content/artists/Jurek+Wybraniec/>
38. Alex Spremberg: materiality and geometric abstraction
http://www.galeriedusseldorf.com.au/GDArtists/Spremberg/ASExh2009/AS_ExhGD09/index.html
39. Paul Moncrieff: geometric shaped on ply, new direction? (more suited to public art) <http://www.galleryeast.com.au/painting/moncrieff/main.htm>
40. Frank Morris: vibrant solid organic shapes (more suited to public art)
<http://www.galeriedusseldorf.com.au/GDArtists/Morris/FMExh07/FMExhGD07/index.html>

RECOMMENDED ARTIST BIOGRAPHIES AND IMAGES

OPTION 1 DETAILS

Lindsay Harris:**Contemporary Nyoongar painter**

Lindsay Harris is a contemporary Indigenous artist and his artwork references his Nyoongar heritage. His bold use of colour and shape in clay, ochres and natural resin directly link his work to the land and our Country. He is becoming widely recognised for the depth and strength of his work depicting the country he is so passionate about.

The City's Art Collection is considerably under-represented in the area of significant contemporary Nyoongar artworks. The 2011-2012 commission presents a unique opportunity to commission an artwork from an artist who is on his way to developing a significant national reputation in the arts. Given the City's commitment to the yearly NAIDOC Celebrations, this commission could be timed to be launched at the flag raising event/ exhibition opening.

Lindsay's artist profile is rising rapidly. Significantly, Lindsay has been selected as one of the top 20 Indigenous artists in Australia for the 2nd National Indigenous Art Triennial at the National Gallery of Australia in 2012. He has enjoyed several years of near sell-out shows in what is perceived to be a difficult art-purchasing market. His work is becoming increasingly sought after and as such significant works have recently been acquired by private collectors in New York, London, Hong Kong, Singapore, Japan, Canada and extensively across Australia.

In making his art, Lindsay considers himself to be a messenger and bearer of cultural continuity for his people. As a Nyoongar artist his interest has always been finding ways of representing his lands. Joondalup is a highly significant site for Nyoongar peoples. The commissioned artwork would explore Nyoongar connection to the land. Lindsay would conduct research into the lands of the Joondalup region. He is adept and skilled at respecting Indigenous cultural protocols.

Lindsay is represented by Emerge Art Space.

His substantial artwork ranges from \$4,500 to large scale works at \$14,000

Since his first solo show in 2006, comparatively sized works have risen in price from \$800



Moornong Boodja (My family my country out east,) (2010) resin, pigment & clay on hemp, 142 x 197cm



Karlbeedal (Hot coals of the fire), (2011) resin, pigment & clay on hemp, 100 x 100cm

Moira de la Hunty:

Realist monochromatic painter

A highly skilled representational painter, Moira works predominately in a black and white monochromatic palette. She draws on her medical background and interest in the portrayal of human experience. Moira weaves an intriguing narrative, combining many elements of history, the past, the landscape and people into her work.

Moira has a very distinct style- one that at a distance may be impersonal but very quickly engages the viewer with personal memoirs, evoking memories of the past and history. In recent years, Moira's profile and solid reputation has steadily grown reflecting the skill, passion and dedication she has for her work. She has a Degree of Medicine from the University of Western Australia. Moira is a fulltime artist and has taken part in many group exhibitions as well as having a solo exhibition in 2007. Her works are held in private collections in Western Australia and Victoria, the Dale Alcock Collection and the Horn Collection, Bunbury.

Moira is a contemporary painter interested in the portrayal of human experience. For the Joondalup commission she would explore the local history of Joondalup identifying elements from her research to convey in her painting. Using her signature monochromatic palette, she would layer these multiple elements creating a work that is not only visually relevant to Joondalup but also highly symbolic. In keeping with her style, the painting would be rendered in oils.

Moira is self represented in Western Australia, and by Nyisztor Studios nationally.

Moira's work ranges around \$5,500 – \$7,000

Work on a similar size scale sold in 2007 for \$1,800



Skull on marble, (2010) oil on canvas, 120 x 80 cm



St Lubbock's Day 1871, (2010) oil on canvas, 155 x 190 cm

Holly Story:

Environmental textile artist

Holly Story is an important and well respected artist who works in textiles. Her work sensitively engages the natural environment and speaks of the traditions of 'women's work'. Holly's work explores the human and natural world in a hands-on manner. She takes materials, such as wood, cloth, paper and plants and transforms them through simple domestic processes, such as dyeing with plant materials and stitching.

Holly is represented by Turner Galleries, a well respected gallery and one of the largest commercial galleries in WA. The City's Art Collection has a significant omission of high quality textile based artworks. Holly's work is in the collections of the Art Gallery of Western Australia, City of Perth, Parliament House Collection, Canberra, University of Western Australia, Western Australian Chamber of Commerce and Industry, City of Fremantle, and Holmes a Court Collection. She has exhibited across Australia and internationally, including the Art Gallery of Western Australia, Lawrence Wilson Art Gallery at UWA, and in China and Japan.

Over the past two decades Holly's art practice has included printmaking, embroidery, installation, video, public art and sculpture. For the commission she would be working on small scale sculptures or three dimensional wall based works. Holly's engagement with the local environment of the Joondalup region would be unique. Instead of just commenting on the environment, she would actually use plant materials sourced from the local environment in a hands-on way. An example of this is the beautiful and evocative works she creates from various dyeing processes using natural material- creating a colour palette of Joondalup. It is likely that Holly would link with the Environment and Natural Areas teams to create her work.

Holly is represented by Turner Galleries.

Holly's works range from the high end \$15,000 of more substantial floor and wall based works, to small wall based works at \$2,500, to high edition small scale prints at \$800.



Green rosette (2009), found blankets, linen thread, embroidery hoop, plant dyes, found button, 39 x 39 x 5cm



Map of the Swamp#2 (2008) plant dyed blanket, iron oxides, acrylic binder, tailor's chalk, silk thread, 114 cm h x 95cm w irregular

Holly Grace:

Glass artist

Holly Grace's artistic medium is glass. Her glass works are beautifully cast using a variety of rare techniques. Images are etched and embedded into the structure of the glass. Human interaction with nature is a strong theme in her work, which predominately features the natural environment and people. Her fascination with glass and the natural environment stems from watching nature through windows.

Holly is an experienced artist who is adept at working in a commissioning environment. Her glass work is of a high artistic quality, setting it aside from decorative 'crafty' items often seen in the medium. She has successfully completed a long list of commissions in public spaces, including Crown Casino Melbourne, numerous hotels in Shanghai, Singapore, Melbourne, Canberra and Hong Kong, to corporations such as Apache Energy, Perth. Her work is featured in the collections of National Gallery of Australia, Parliament House Art Collection, City of Perth Art Collection, Art Gallery of Western Australia, City of Wanneroo Art Collection and Edith Cowan University.

Holly is interested in the dividing line between the urban and natural landscapes, which is abundant in Joondalup. She uses glass as an invisible skin to explore our historical and ongoing fascination with nature. Holly proposes to spend time exploring the Joondalup community and landscape to develop ideas for the commission work. It is likely that she would produce a body of glass works that can be mounted on the wall using specially designed and solid clips.

Holly Grace is represented by Perth Galleries.

Holly's glass vessels range from \$4,000 to \$10,000.



Deadhorse Gap Landscape Bottles (2010) blown glass with glass powder and metal leaf surfaces and sandblasted landscape imagery, 2pc set, sizes variable overall dimensions H58cm x L52cm x W10cm



Canopy Commission for Apache Corporation (2009) blown glass with sandblasted tree branch imagery and metal fixings, 6p installation, H200cm x W100cm x D10cm. Level 9, 100 St Georges Tce, Perth, WA

Nien Schwarz:

Environmental sculptor

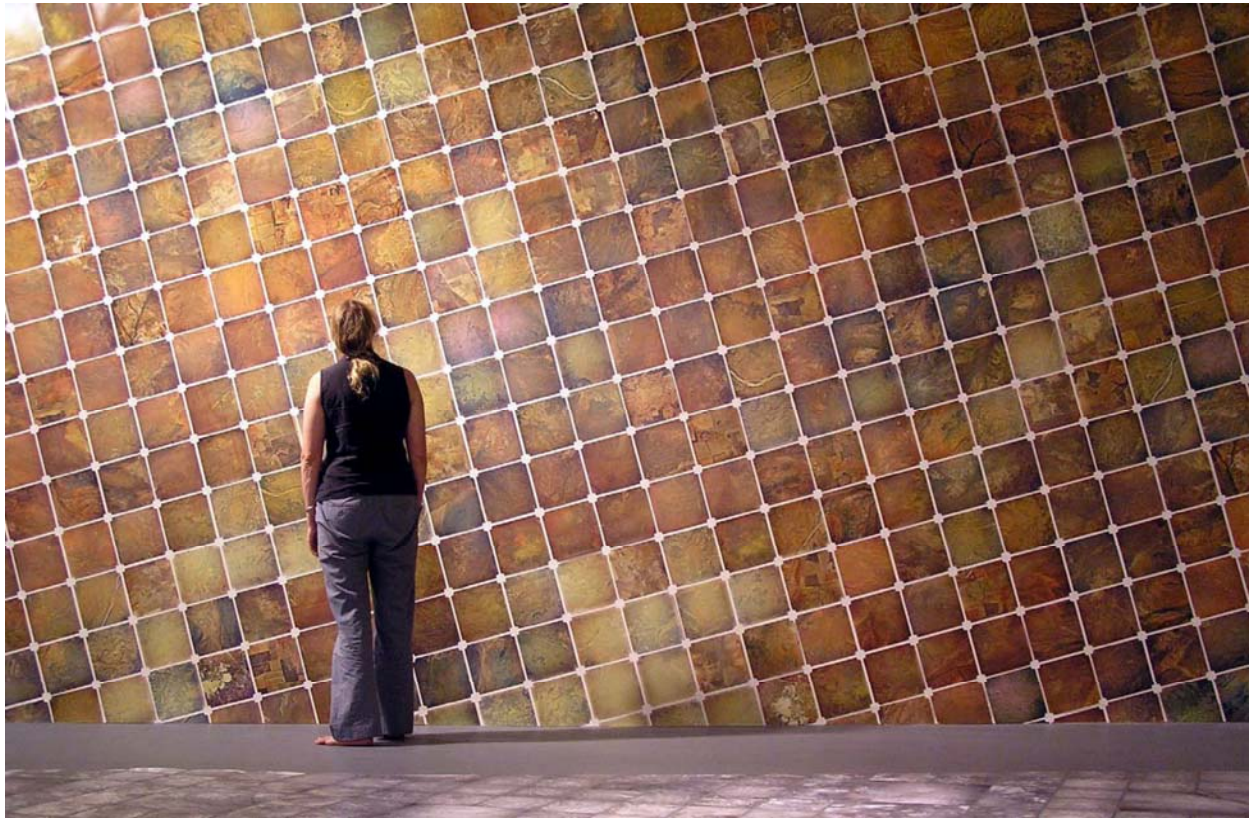
Dr Nien Schwarz explores themes of geography, mapping and the landscape. Her work relates directly to the environment, and this relationship informs the materials that she works with in her artwork. Inspired by the location she is in, Nien has created work using maps, GIS systems, the earth, and plant material for large scale public artworks, paintings, wall based work, to temporary installations for festivals.

Nien is a well respected artist on a national scale. She has not submitted to the Invitation Art Award for many, many years and the Visual Arts Commission is a fantastic way to acquire an important mid career artist whose work is notably missing from the City's Art Collection. Nien has been commissioned to create artworks for the Perth International Arts Festival, Curtin University of Technology Art Collection, City of Perth, Australian Capital Territory, Dept of Environment, ACT Dept. of Urban Services, and several public art projects for the Canberra Museum and Gallery. She also works a Senior Lecturer in Visual Arts at Edith Cowan University

Nien's work is a continual reflection of her relationships to the ground beneath our feet. Her past works have been influence by geological field expeditions and her work with GIS systems. For the commission she would be working on small scale sculptures or 3 dimensional wall based works. For the Visual Art commission, Nien would dedicate time to research the Joondalup region and would like to work with Officers in the City that specialise in mapping.

Nien is a self represented artist.

Nien's work ranges in price starting from \$3,000 for smaller wall based works to over \$10,000 for site specific works.



Requiem for rain (2006) mixed media



Transpose (2007-2008) original hand-coloured 1962 NT and WA geological maps, natural earth pigments and ground geophysical core samples on canvas, acrylic medium

Garry Pumfrey:

Realist urban painter

Garry Pumfrey is a highly skilled realist painter. His ongoing series of paintings continue to investigate consumer culture, by recording various corner deli's and fish and chip shops around his home and studio. Garry skillfully captures these buildings as a touching tribute to a disappearing Australian icon.

Represented by Turner Galleries, Garry has significantly exhibited in Flinders Lane Gallery, Melbourne, Tin Sheds Gallery, University of Sydney and the Melbourne Art Fair. His work was included in the national touring show, Configured. Garry's work is in the Parliament House Collection Canberra, Murdoch University, Edith Cowan University, Gascoyne Town Council, Town of Vincent, City of Sterling, City of Melville and in various private collections.

The core of Garry's artistic practice is the realistic capturing of urban buildings that directly link to his investigation of consumer culture. The artist is interested in shop fronts and corner deli's, the buildings that were once the hub of daily existence and are slowly being phased out by new developments. His exploration into urban scenes is intriguing, his landmarks and icons that he seeks and paints are socially and culturally significant to communities, but often over looked. He sets about to historically immortalize these icons through paint. For the Visual Art commission, Garry would explore the Joondalup region, in particular the urban and suburban landscape, investigating and selecting buildings that link to his dedicated practice and theme. These would be rendered skillfully in oil on canvas.

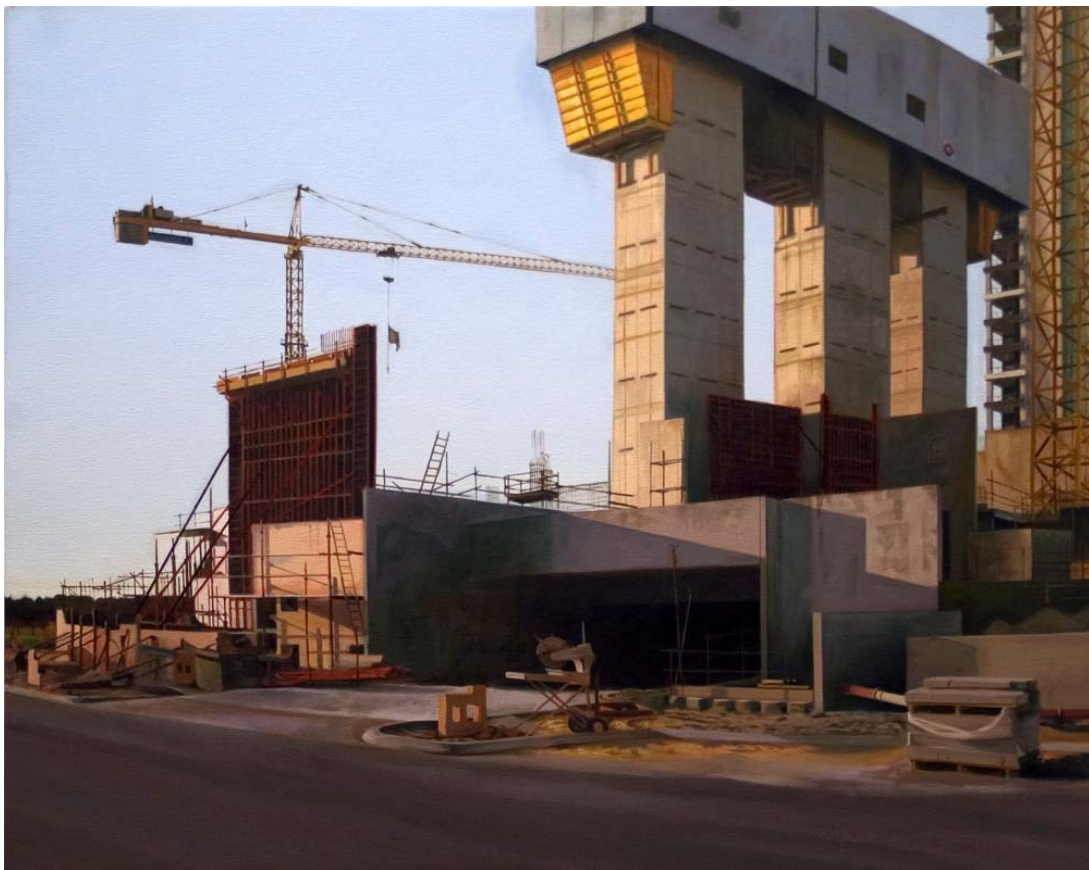
Garry is represented by Turner Galleries.

Garry's works are currently around \$5,000 - \$6,000.

In 2004 works of a similar scale sold for \$1,200.



queens park video (2006) oil on linen



burswood peninsula tower 3 SE elevation (2007) oil on canvas 86 x 107cm

Tony Windberg:

Landscape realism

Tony Windberg is a highly skilled realist painter and drawer. His work frequently explores the natural environment. His paintings and drawings utilise local materials such as earth pigments, ash and collected charcoal. Recent work includes exquisitely engraved tree lined landscapes into wood vinyl.

Tony is represented by Gallery East and has works in the collections of Artbank, Australian Capital Equity, Curtin University, Dale Alcock Group, Grafton Regional Hospital, Sir Charles Gairdner Hospital, Woodside Energy and the Cities of Armadale, Bunbury, Geraldton-Greenborough, Melville, Perth, Vincent and Bunbury. In 1990 Tony was commissioned to produce 25 major artworks of the Kimberley region for Argyle Diamonds. Commissions for Alinta Gas and Rio Tinto followed.

Tony explores the anxious relationship people have with nature, linking to the Romanticism movement. His work follows the theme of the uneasy interaction with, and intervention in, the Australian landscape, or 'man vs nature'. His artworks have a strong emphasis on realism, with a textural quality on closer inspection. He is heavily inspired by his surroundings. For the Visual Art commission, Tony would explore the Joondalup region, in particular the natural environment and landscape, and human interaction within it. The work would be produced in his style, realistic renders in oil on canvas or engraved wood vinyl.

Tony is represented by Gallery East.

Tony's works are currently around \$4,000 - \$7,000.

In 2003 works of a similar scale sold for \$2,000.



The Cutter (2010) oil on canvas, 61 x 66cm



Cat 6. *Vanishing Points* (2010), engraved vinyl. Marri & Balga resin, painted MDF, 39 x 134.5 x 5.2 cm