

DELAMERE PARK

VERSION 6 JANUARY 2013

CURRAMBINE COMMUNITY CENTRE FEASIBILITY STUDY RESULTS (2009)

The table below ranks in priority the landscape features the community would like to see included in Delamere Avenue Public Open Space.

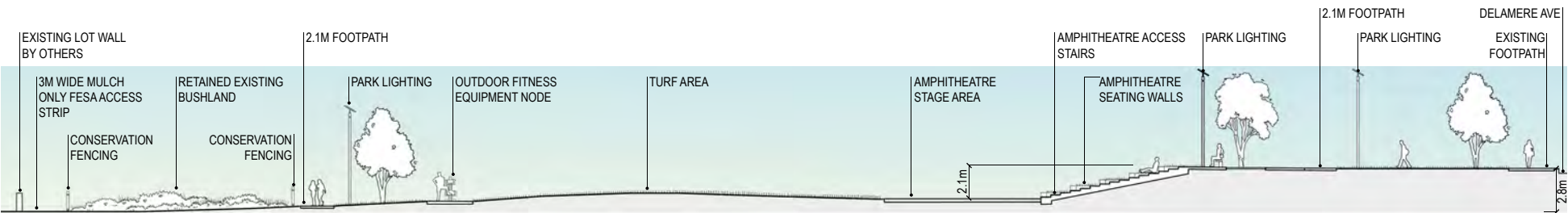
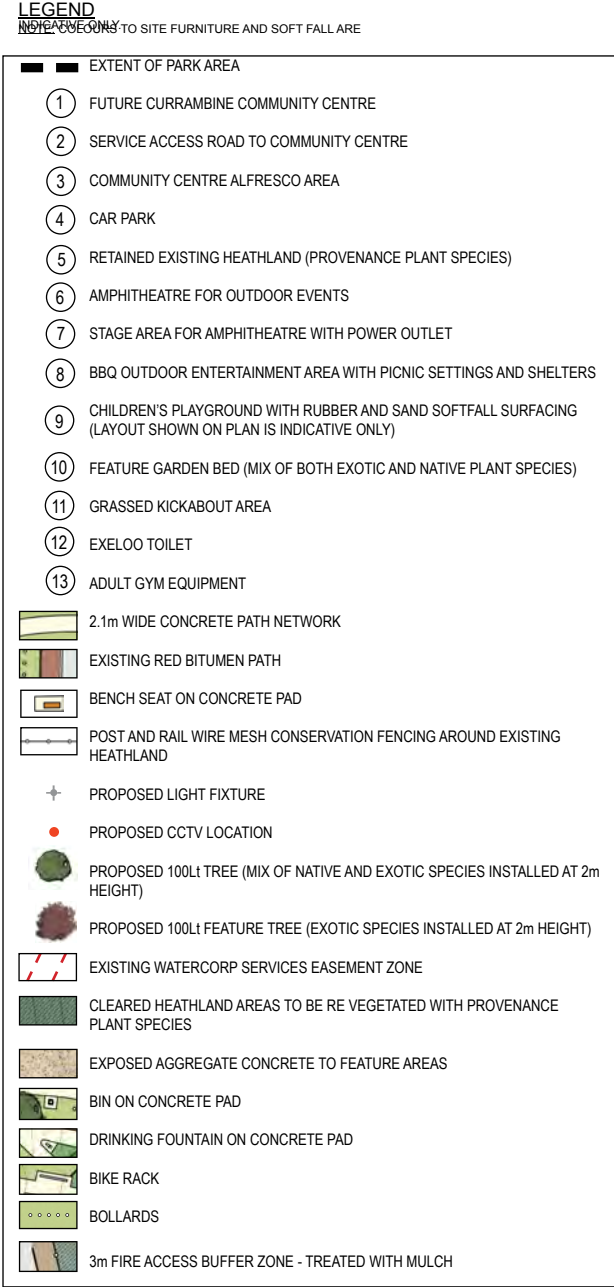
TABLE 3.0

EXTERNAL SPACES AND FACILITIES	% IN SUPPORT	CORRESPONDING PLAN LEGEND NUMBER
Parkland	76%	✓
Community Garden	70%	-
BBQ and outdoor entertainment area	57%	⑧
Multi purpose courts - netball, tennis, basketball	56%	-
Amphitheatre for outdoor events	56%	⑥ ⑦
Outdoor exercise equipment and circuit	49%	⑬
Children's playground	47%	⑨
Young peoples meeting and activity zone	45%	-
Men's shed - older men	37%	-
Water feature and play area	35%	-
Mini golf	34%	-
Shed for maintenance and cars - young people	30%	-
Skate Park	20%	-



LANDSCAPE PLAN

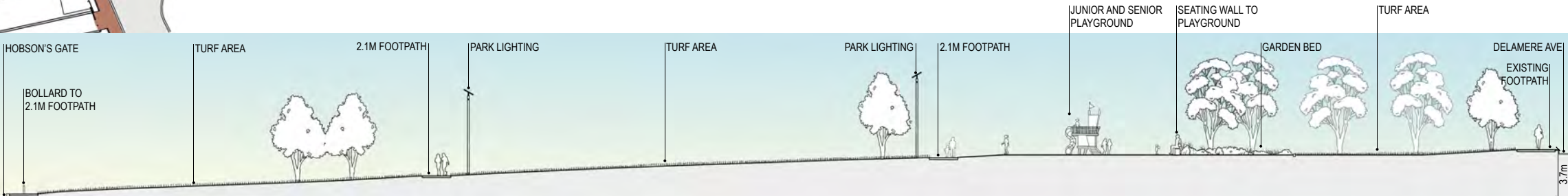
SCALE 1:500 AT A1



LANDSCAPE SECTION A-A

SCALE 1:200 AT A1

NOTE: LIGHTING AND SITE FURNITURE DEPICTED IN SECTIONS A AND B ARE INDICATIVE ONLY.



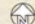
LANDSCAPE SECTION B-B

SCALE 1:200 AT A1

ATTACHMENT 2

LEGEND

- 1 PROPOSED CURRAMBINE COMMUNITY CENTRE
- 2 SERVICE ACCESS ROAD TO COMMUNITY CENTRE
- 3 COMMUNITY CENTRE ALFRESCO AREA
- 4 CAR PARK
- 5 RETAINED EXISTING HEATHLAND
- 6 AMPHITHEATRE FOR OUTDOOR EVENTS
- 7 STAGE AREA FOR AMPHITHEATRE WITH POWER OUTLET
- 8 BBQ OUTDOOR ENTERTAINMENT AREA WITH PINIC SETTINGS AND SHELTERS
- 9 CHILDREN'S PLAYGROUND WITH RUBBER SOFTFALL SURFACING
- 10 FEATURE GARDEN BED
- 11 GRASSED KICKABOUT AREA
- 12 EXELOO TOILET
- 13 ADULT GYM EQUIPMENT
- 2.1m WIDE CONCRETE PATH NETWORK
- EXISTING RED BITUMEN PATH
- BENCH SEAT ON CONCRETE PAD
- PINE POST AND WIRE FENCE AROUND EXISTING HEATHLAND
- LIGHT FIXTURE
- POSSIBLE CCTV LOCATION
- PROPOSED TREE
- PROPOSED FEATURE TREE

SCALE 1:500 AT A1 

NEW RESIDENTIAL DEVELOPMENT BY OTHERS

DELAMERE AVENUE

CYANE WAY

DELAMERE AVENUE

CHESBROUGH WAY

HOBSON GATE

FUTURE TAVERN SITE WITH
CAR PARK BY OTHERS

EXISTING COMMERCIAL
DEVELOPMENT SITE WITH
CAR PARK BY OTHERS

FUTURE COMMERCIAL
DEVELOPMENT SITE WITH
CAR PARK BY OTHERS

FUTURE SHOWROOM SITE
WITH CAR PARK BY OTHERS

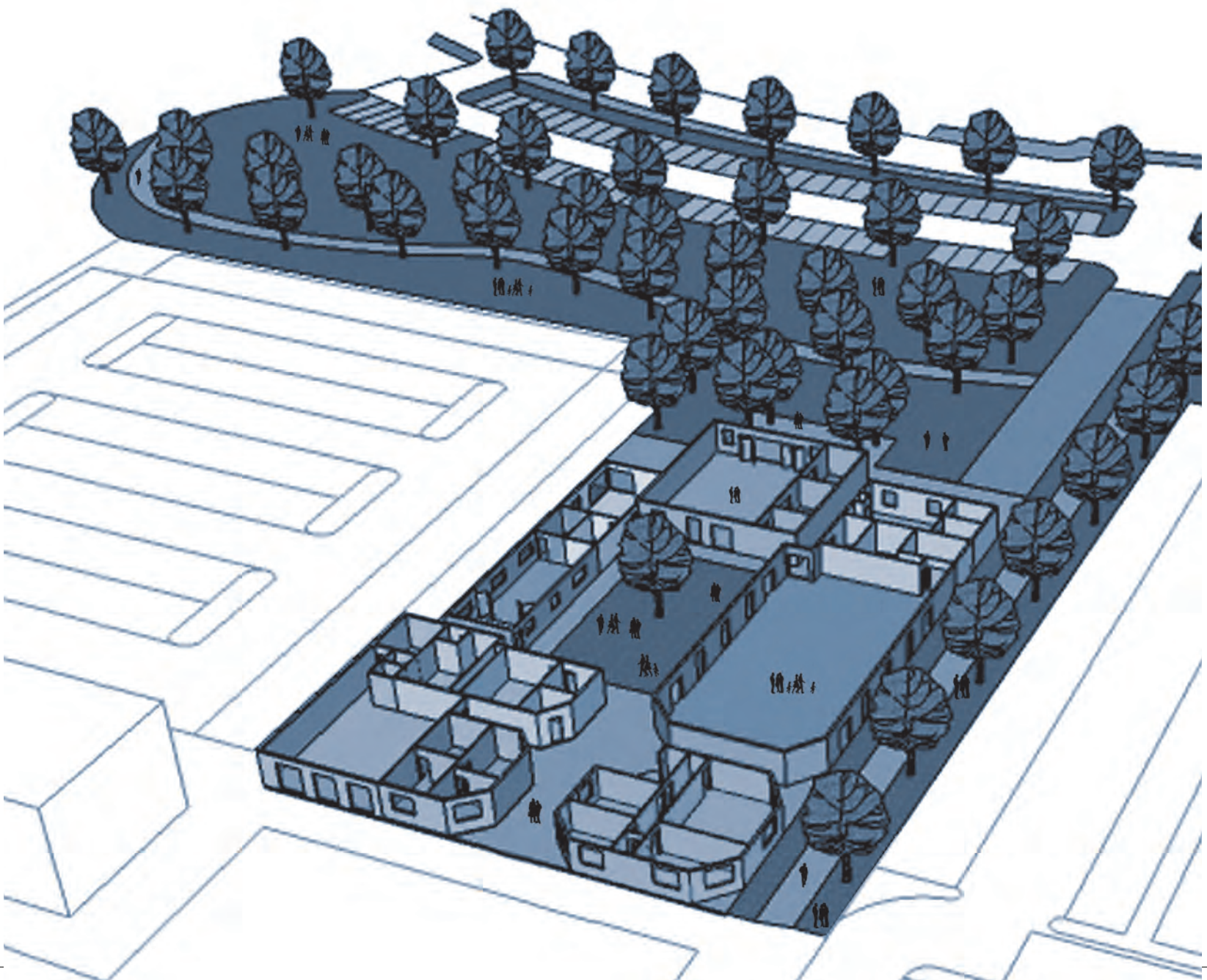
FUTURE ADDITIONAL CAR
PARK SITE BY OTHERS

VERSION 5 06/07/2011

DRAFT CONCEPT PLAN

DELAMERE AVENUE PUBLIC OPEN SPACE

Currambine Community Centre – Community Consultation



The City of Joondalup Council recently endorsed a draft concept plan for the development of a new community centre in Currambine.

To find out what the public think about the design of the internal spaces for the building and the provision for parking on site, Council decided to consult with the community.

The design was informed by a feasibility study which involved:

- Discussions with 18 external stakeholders including community service organisations, government agencies, residents and ratepayers associations, and local politicians.
- Surveying a random selection of 900 households in the study area (such as Currambine, Joondalup, Burns Beach, Iluka, Kinross and Connolly).
- Conducting a youth survey in the area.

Who is being consulted now?

- Local householders and non-resident landowners within 1km of the site;
- Local youth aged 12 - 18 within 1km of the site; and
- The general public.

The same survey format will be used for each population group.

The general public will be able to access an online version of the survey.

What will happen with the results from the feedback?

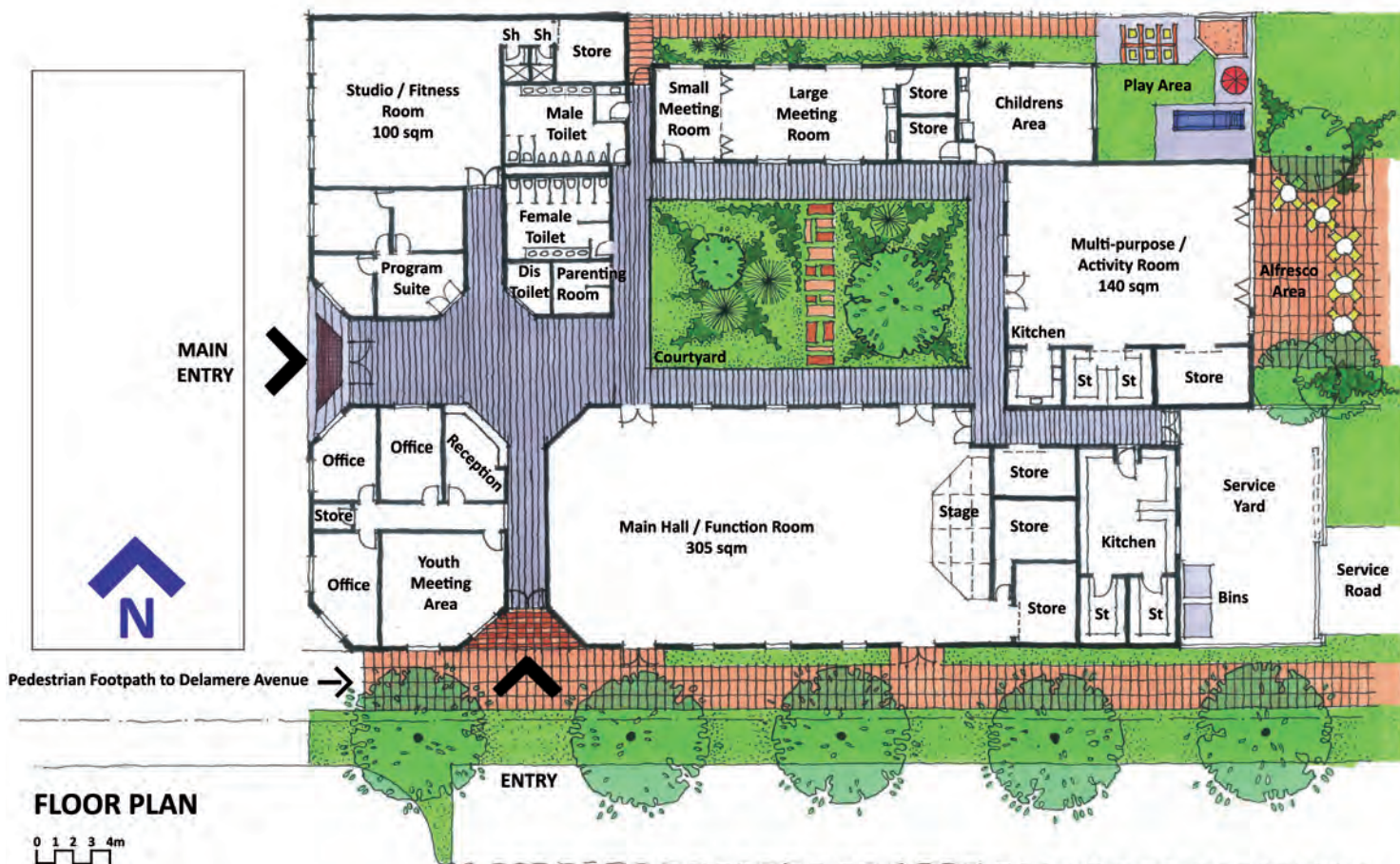
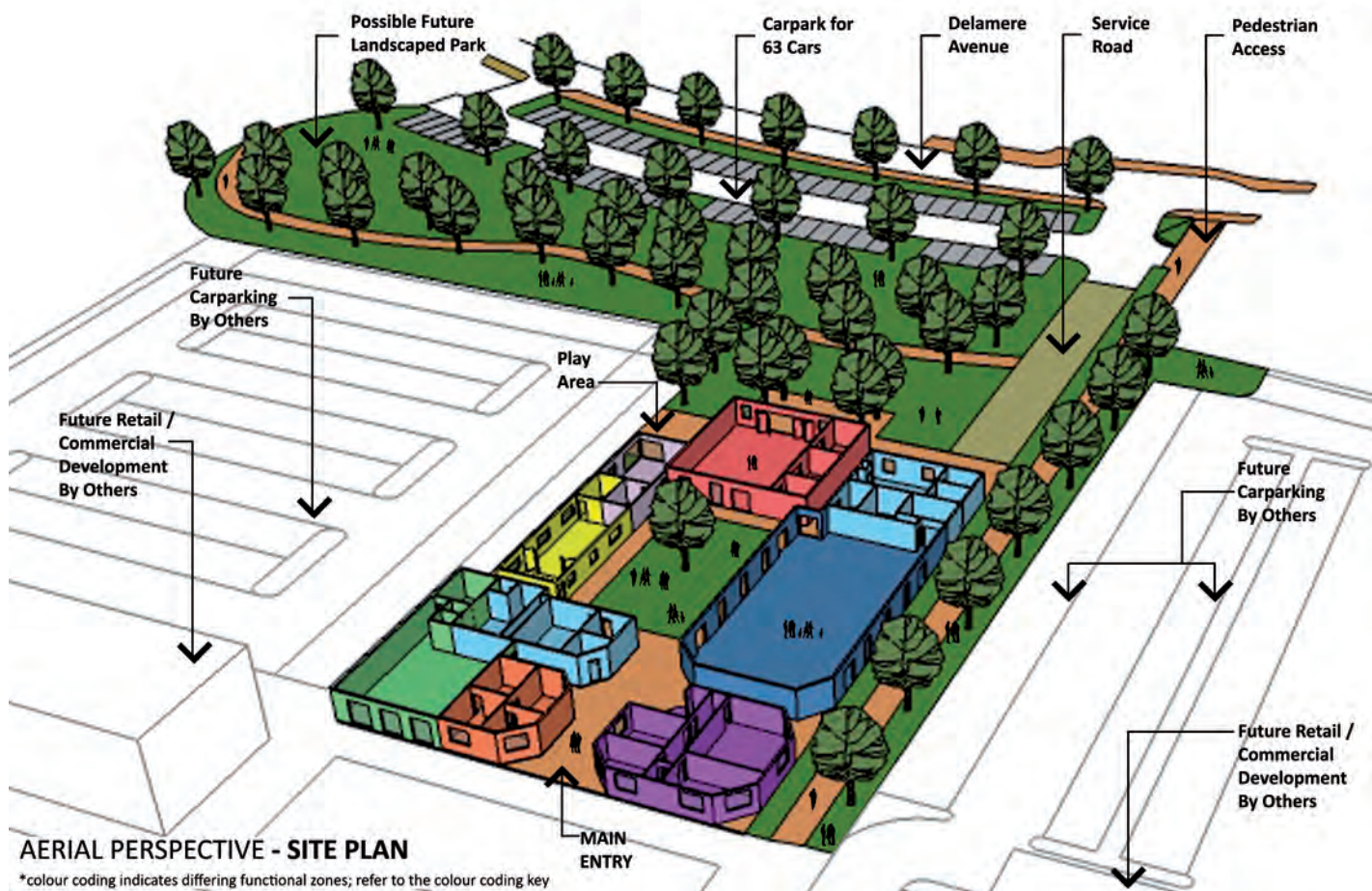
The feedback from each group will be analysed to show:

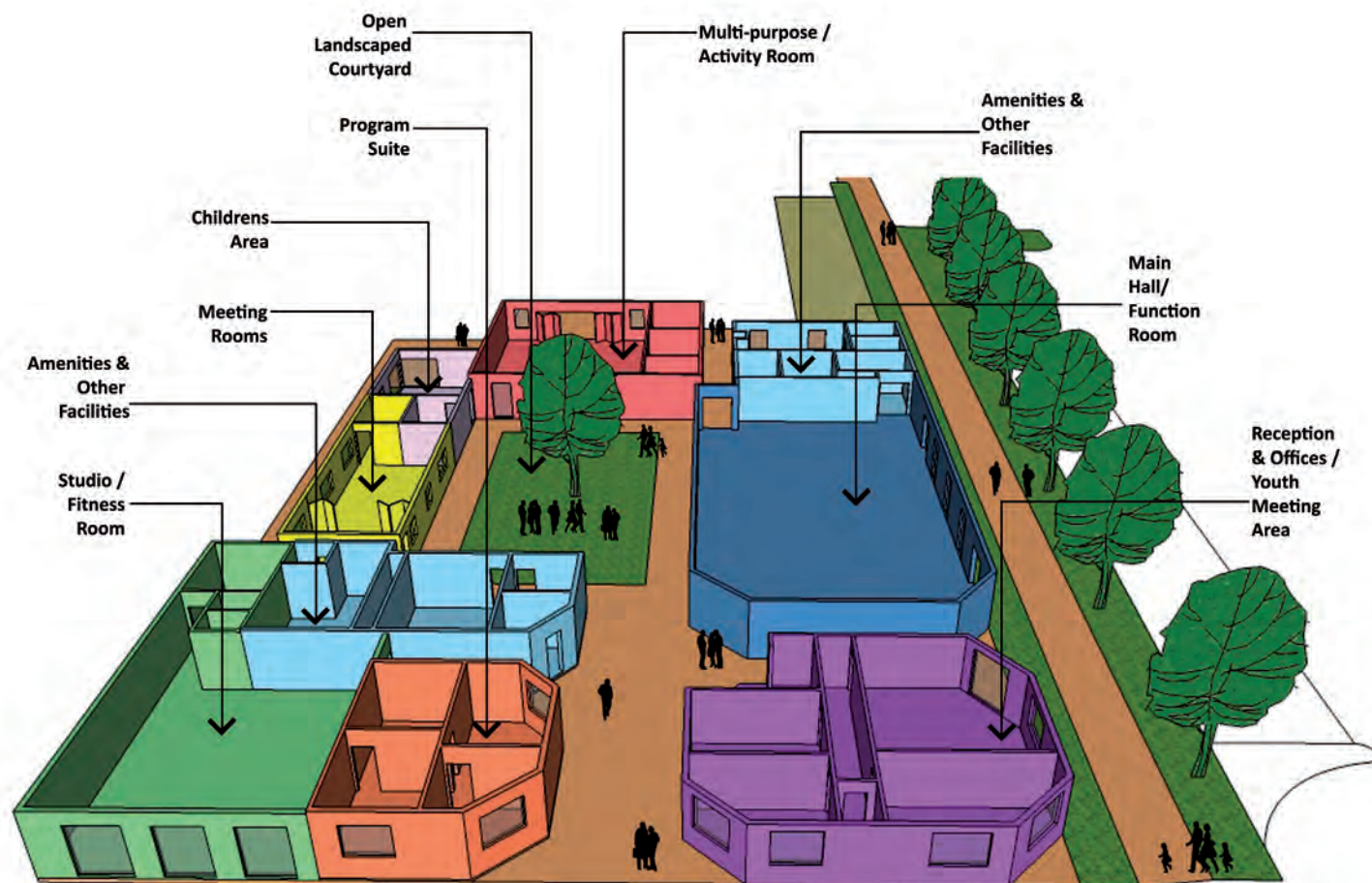
- Levels of support for internal spaces;
- Levels of support for parking provisions.

A report on the consultation will be provided to the Council and a decision will be made whether or not to approve or make further amendments to the concept plan.










Please note: The report on the outcome of the consultation will provide an analysis of feedback from the three population groups and overall, but will not identify individuals. However, for your comments to be considered as part of the consultation process, your contact details must be supplied in the space provided on the form.







Aerial Perspective – Floor Plan *colour coding indicates differing functional zones; refer to the colour coding key

Uses	
 Studio/Fitness Room (including showers and storage)	Gym – selected fitness equipment; Fitness Circuit/Weight Training; RPM.
 Program Suite	Suite for government or non-government organisations.
 Reception and Offices Youth Meeting Area	Management/City Services usage; TV/Video Games; Youth Meetings; Internet; Games Room.
 Main Hall/Function Room (with sprung timber floor – capable of catering for over 300 people with commercial kitchen)	Theatre – Lectures and Performing Arts; Community Events, Festivals and Markets; Functions – Weddings etc; Dancing Classes/Fitness Room – for larger classes such as Yoga, Aerobics, Zumba, etc.
 Meeting Rooms (large and small, capable of catering for smaller numbers and classes)	Club and other Group Meetings; Arts and Crafts and other classes; Yoga/ Fitness Classes; Youth Activities – where larger area than Youth Meeting Area is required. (Flexible due to folding acoustic partition).
 Childrens Area (includes external play area)	Playgroups; Creches; Childrens activities.
 Multi-purpose/Activity Room (with sliding/folding doors to access alfresco area and good vehicular access from service road)	Arts and crafts; Education and Learning programs – including Car Maintenance etc; Inside/Outside Function Area; Seminars/Workshops; Community Meetings.
 Open Landscaped Courtyard	Multiple linked to other rooms; overspill from Main Hall/Congregation Area; Wedding Reception – photos etc; outdoor educational classes; quiet seating area.
 Amenities and other facilities	Accessible Toilets – including unisex accessible toilet and parenting room; Kitchen – commercial standard capable of catering for 300+; Storage – for the Kitchen, Main Hall, Function and other rooms; Facilities – associated with the Main Hall/Function Room.

Currambine Community Centre – Community Consultation

1. Please identify the extent to which you support or do not support the draft design of each internal space and its potential use by ticking the box that most reflects your opinion.

Colour Code	Area	Strongly support	Support	Neutral	Against	Strongly against
	Studio/Fitness Room					
	Program Suite					
	Reception and Offices					
	Youth Meeting Area					
	Main Hall/Function Room					
	Meeting Rooms					
	Childrens Area					
	Multi-purpose/Activity Room					
	Open Landscaped Courtyard					
	Amenities and other facilities					
	Parking location at rear of Community Centre (63 bays)					

2. Do you have any other comments you would like to make about the internal spaces in the draft concept plan? Please use the space below or attach additional pages.

3. I am: ☐ Male ☐ Female

4. I am aged between:

<input type="checkbox"/> 12 - 17	<input type="checkbox"/> 18-24	<input type="checkbox"/> 25 - 34	<input type="checkbox"/> 35-49
<input type="checkbox"/> 50 - 59	<input type="checkbox"/> 60 - 69	<input type="checkbox"/> 70 - 84	<input type="checkbox"/> 85+

Name: _____

Address: _____

Telephone (Hm): _____ Mobile: _____

Email: _____

Thank you for your feedback.

Please forward your completed survey(s), in the prepaid envelope provided, by the closing date of 6 May 2011.