


## LOT 200 (24) LOT 201 (22) AND LOT 202 (20) KANANGRA CRESCENT, GREENWOOD







 <p>90 Boas Ave, Joondalup WA 6027 PO Box 21, Joondalup WA 6919 Ph: 08 9400 4000 Fax: 08 9300 1383</p>	<div><div>↑ N</div><div>Scale (A4):1:8000</div><div>Date: 2 November 2015</div><div>DISCLAIMER: While every care is taken to ensure the accuracy of this data, the City of Joondalup makes no representations or warranties about its accuracy, completeness or suitability for any particular purpose and disclaims all liability for all expenses, losses, damages and costs which you might incur as a result of the data being inaccurate or incomplete in any way and for any reason.</div></div>	<p><b>Lots 200, 201 and 202 Kanangra Crescent, Greenwood</b></p>
---	--	--



LOT 23 (77) GIBSON AVENUE, PADBURY







 **City of Joondalup**  
90 Boas Ave, Joondalup WA 6027  
PO Box 21, Joondalup WA 6919  
Ph: 08 9400 4000  
Fax: 08 9300 1383  
info@joondalup.wa.gov.au  
www.joondalup.wa.gov.au

N

Scale(A4):1:8000

Date: 13 November 2015

DISCLAIMER: While every care is taken to ensure the accuracy of this data, the City of Joondalup makes no representations or warranties about its accuracy, completeness or suitability for any particular purpose and disclaims all liability for all expenses, losses, damages and costs which you might incur as a result of the data being inaccurate or incomplete in any way and for any reason.

**Lot 23 (77) Gibson Avenue, Padbury**



LOT 803 (15) BURLOS COURT, JOONDALUP







↑  
N

Date: 13 November 2015

**DISCLAIMER:** While every care is taken to ensure the accuracy of this data, the City of Joondalup makes no representations or warranties about its accuracy, completeness or suitability for any particular purpose and disclaims all liability for all expenses, losses, damages and costs which you might incur as a result of the data being inaccurate or incomplete in any way and for any reason.

**Lot 803 (15) Burlos Court, Joondalup**



LOT 1001 (14) CAMBERWARRA DRIVE, CRAIGIE







Date: 13 November 2015

**DISCLAIMER:** While every care is taken to ensure the accuracy of this data, the City of Joondalup makes no representations or warranties about its accuracy, completeness or suitability for any particular purpose and disclaims all liability for all expenses, losses, damages and costs which you might incur as a result of the data being inaccurate or incomplete in any way and for any reason.

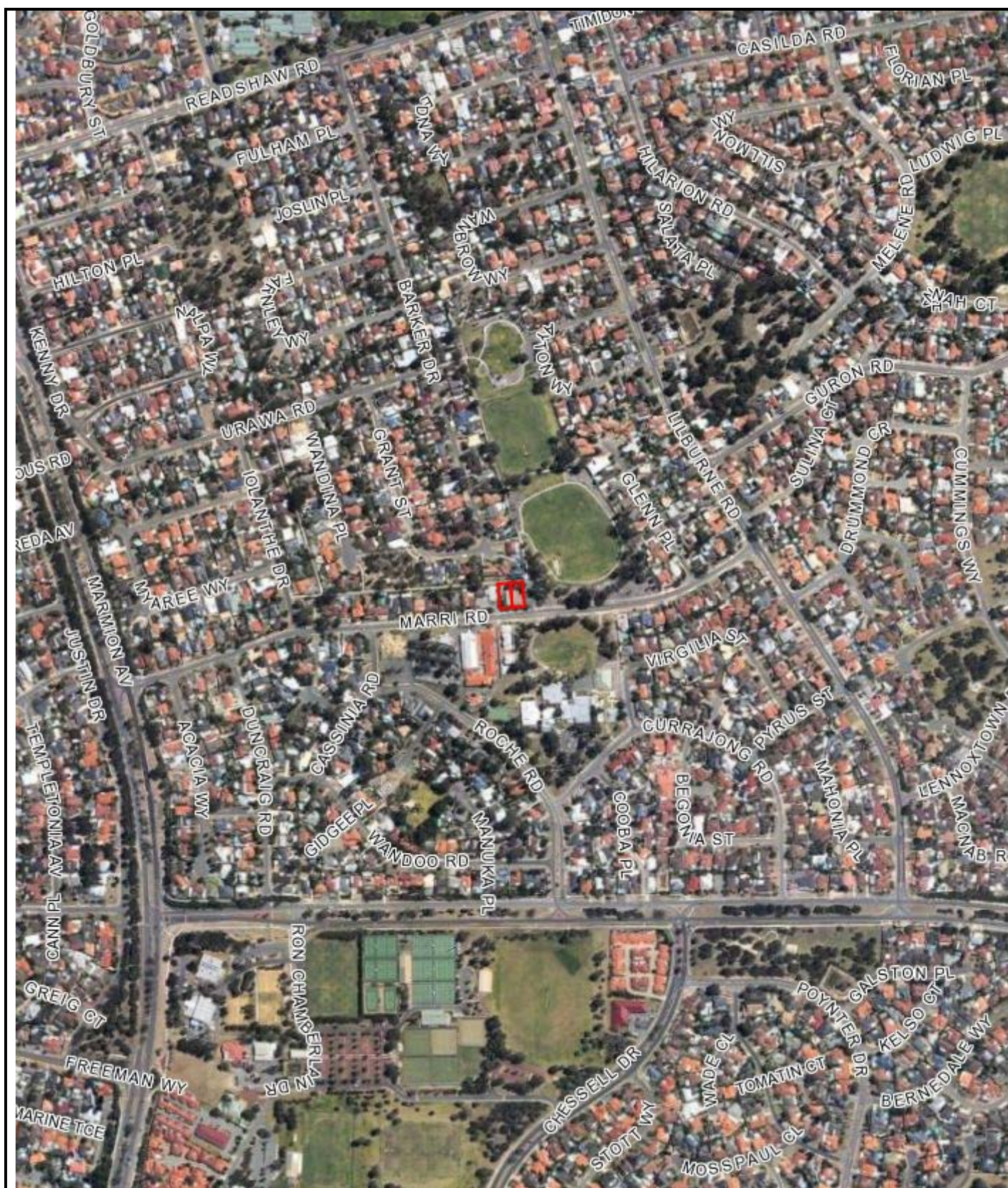
**Lot 1001 (14) Camberwarra Drive, Craigie**



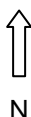
LOTS 642/643 (57/59) MARRI ROAD, DUNCRAIG







90 Boas Ave, Joondalup WA 6027  
 PO Box 21, Joondalup WA 6919  
 Ph: 08 9400 4000  
 Fax: 08 9300 1383  
 info@joondalup.wa.gov.au  
 www.joondalup.wa.gov.au



Scale(A4):1:8000

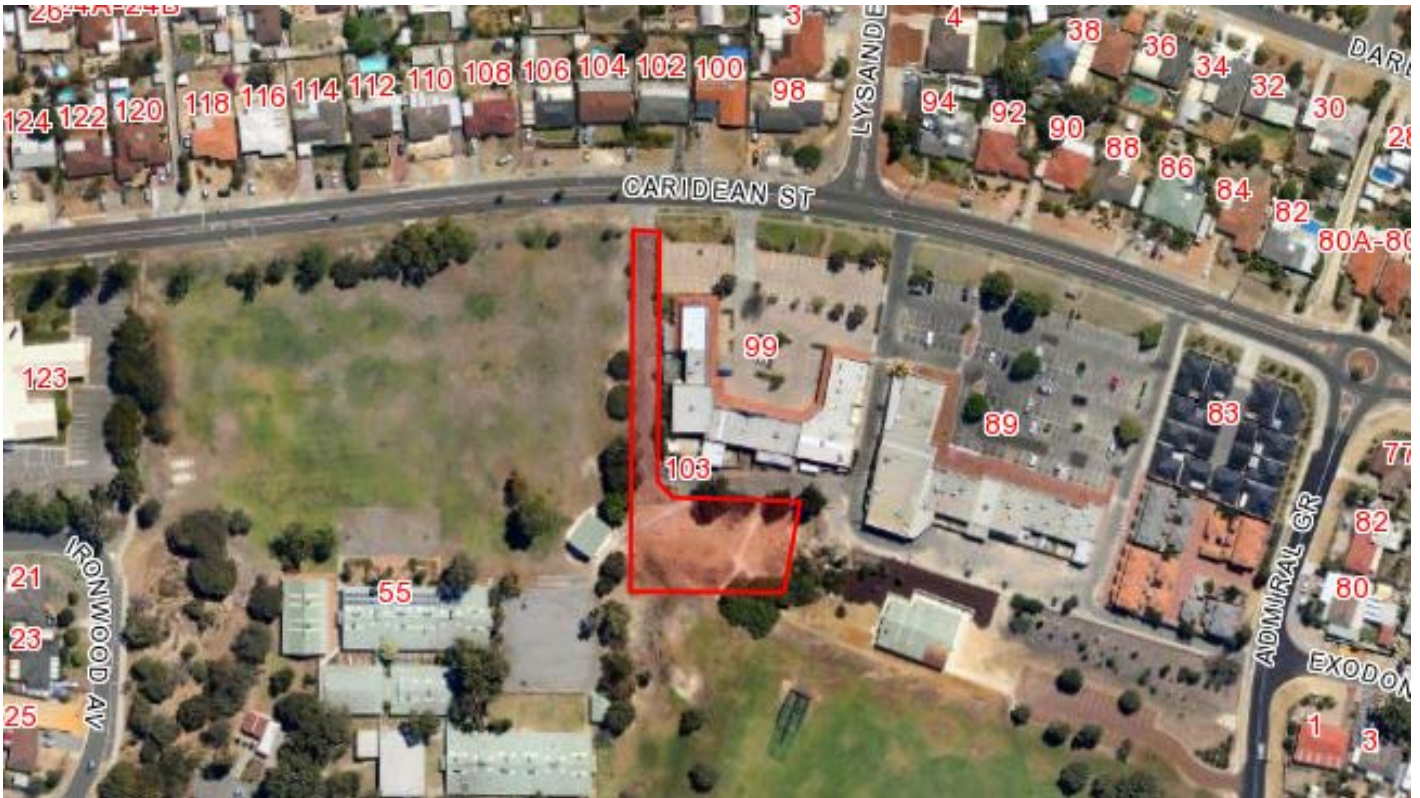
Date: 13 November 2015

DISCLAIMER: While every care is taken to ensure the accuracy of this data, the City of Joondalup makes no representations or warranties about its accuracy, completeness or suitability for any particular purpose and disclaims all liability for all expenses, losses, damages and costs which you might incur as a result of the data being inaccurate or incomplete in any way and for any reason.

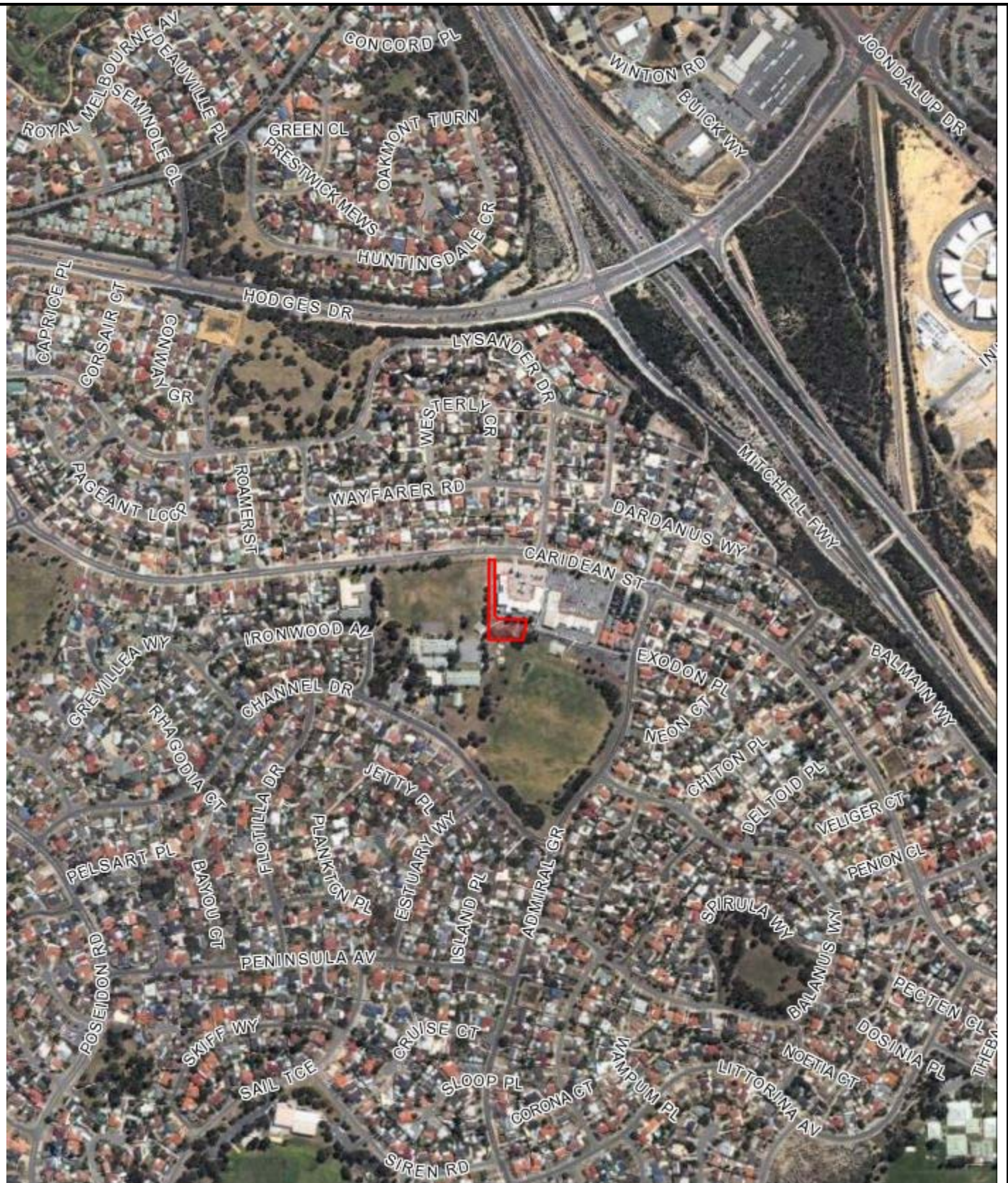
**Lots 642 & 643 Marri Road, Duncraig**



**LOT 745 (103) CARIDEAN STREET, HEATHRIDGE**







90 Boas Ave, Joondalup WA 6027  
 PO Box 21, Joondalup WA 6919  
 Ph: 08 9400 4000  
 Fax: 08 9300 1383  
 info@joondalup.wa.gov.au  
 www.joondalup.wa.gov.au



Scale(A4):1:8000

Date: 13 November 2015

DISCLAIMER: While every care is taken to ensure the accuracy of this data, the City of Joondalup makes no representations or warranties about its accuracy, completeness or suitability for any particular purpose and disclaims all liability for all expenses, losses, damages and costs which you might incur as a result of the data being inaccurate or incomplete in any way and for any reason.

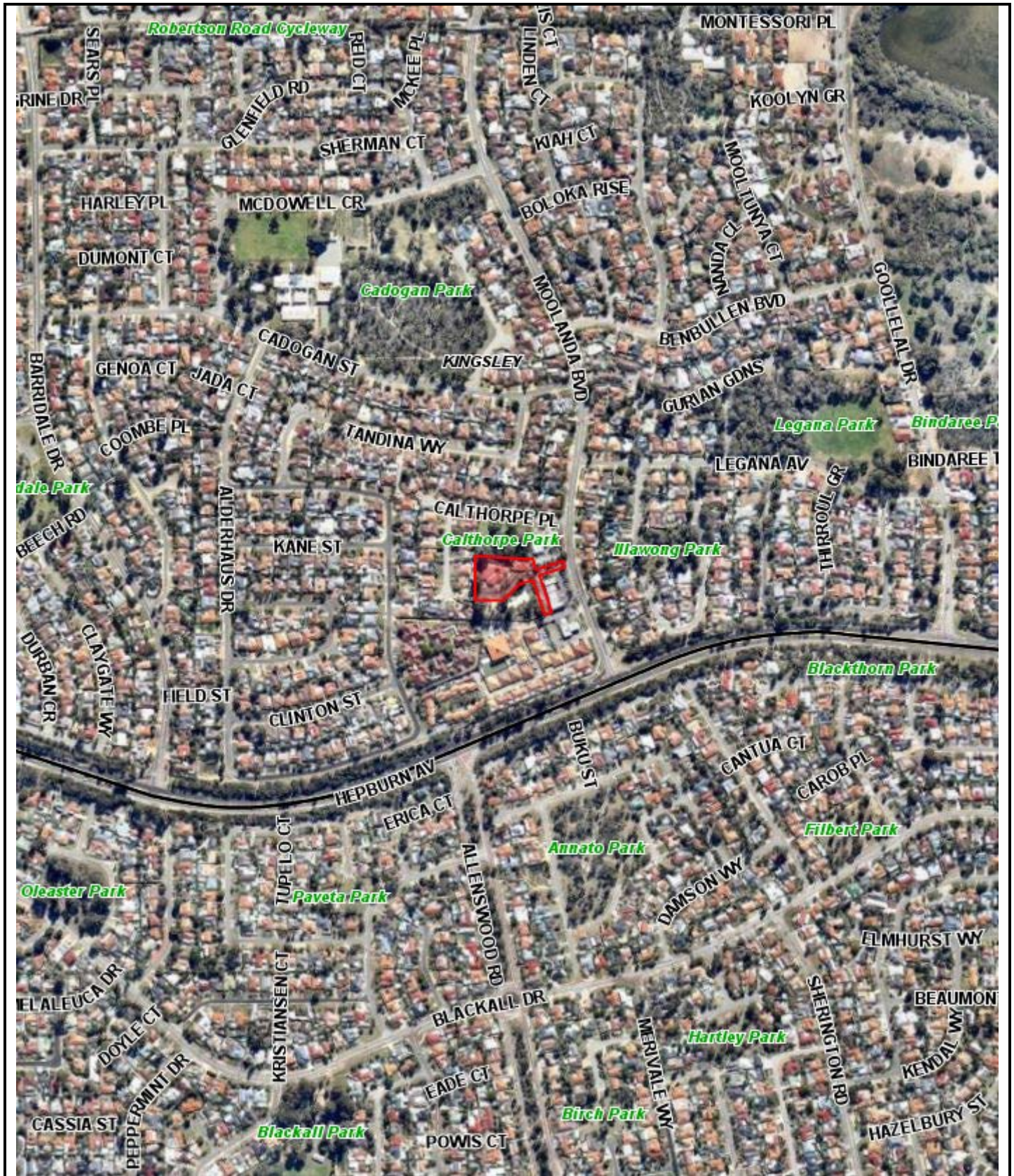
**Lot 745 (103) Caridean Street, Heathridge**





## LOT 549 (11) MOOLANDA BOULEVARD, KINGSLEY







 <p>City of Joondalup</p> <p>90 Boas Ave, Joondalup WA 6027 PO Box 21, Joondalup WA 6919 Ph: 08 9400 4000 Fax: 08 9300 1383</p>		<p>Scale(A4):1:8000</p> <p>Date: 3 November 2015</p> <p>DISCLAIMER: While every care is taken to ensure the accuracy of this data, the City of Joondalup makes no representations or warranties about its accuracy, completeness or suitability for any particular purpose and disclaims all liability for all expenses, losses, damages and costs which you might incur as a result of the data being inaccurate or incomplete in any way and for any reason.</p>	<p>11 Moolanda Boulevard, Kingsley</p>
---	---	--	--



## LOT 12223 (12) BLACKWATTLE PARADE, PADBURY







 **City of Joondalup**  
90 Boas Ave, Joondalup WA 6027  
PO Box 21, Joondalup WA 6919  
Ph: 08 9400 4000  
Fax: 08 9300 1383  
info@joondalup.wa.gov.au  
www.joondalup.wa.gov.au



Scale(A4):1:8000  
Date: 2 November 2015  
  
DISCLAIMER: While every care is taken to ensure the accuracy of this data, the City of Joondalup makes no representations or warranties about its accuracy, completeness or suitability for any particular purpose and disclaims all liability for all expenses, losses, damages and costs which you might incur as a result of the data being inaccurate or incomplete in any way and for any reason.

**Lot 12223 (12) Blackwattle Parade,  
Padbury**