

LOT 200 (24), LOT 201 (22) AND LOT 202 (20) KANANGRA CRESCENT, GREENWOOD





A



B





| | | | |
|---|--|--|---|
|  <p>90 Boas Ave, Joondalup WA 6027 PO Box 21, Joondalup WA 6919 Ph: 08 9400 4000 Fax: 08 9300 1383</p> |  <p>N</p> | Scale (A4):1:8000 | Lots 200, 201 and 202 Kanangra Crescent, Greenwood |
| | | Date: 2 November 2015 | |
| | | DISCLAIMER: While every care is taken to ensure the accuracy of this data, the City of Joondalup makes no representations or warranties about its accuracy, completeness or suitability for any particular purpose and disclaims all liability for all expenses, losses, damages and costs which you might incur as a result of the data being inaccurate or incomplete in any way and for any reason. | |

LOT 23 (77) GIBSON AVENUE, PADBURY



A

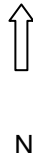


B





90 Boas Ave, Joondalup WA 6027
PO Box 21, Joondalup WA 6919
Ph: 08 9400 4000
Fax: 08 9300 1383
info@joondalup.wa.gov.au
www.joondalup.wa.gov.au



Scale(A4):1:8000

Date: 13 September 2016

DISCLAIMER: While every care is taken to ensure the accuracy of this data, the City of Joondalup makes no representations or warranties about its accuracy, completeness or suitability for any particular purpose and disclaims all liability for all expenses, losses, damages and costs which you might incur as a result of the data being inaccurate or incomplete in any way and for any reason.

Lot 23 (77) Gibson Avenue, Padbury

LOT 803 (15) BURLOS COURT, JOONDALUP

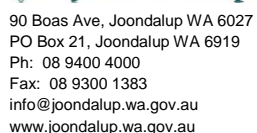


A



B





Date: 13 September 2016

DISCLAIMER: While every care is taken to ensure the accuracy of this data, the City of Joondalup makes no representations or warranties about its accuracy, completeness or suitability for any particular purpose and disclaims all liability for all expenses, losses, damages and costs which you might incur as a result of the data being inaccurate or incomplete in any way and for any reason.

Lot 803 (15) Burlos Court, Joondalup

LOT 1001 (14) CAMBERWARRA DRIVE, CRAIGIE



A



B





90 Boas Ave, Joondalup WA 6027
 PO Box 21, Joondalup WA 6919
 Ph: 08 9400 4000
 Fax: 08 9300 1383
 info@joondalup.wa.gov.au
 www.joondalup.wa.gov.au



Scale(A4):1:8000

Date: 13 September 2016

DISCLAIMER: While every care is taken to ensure the accuracy of this data, the City of Joondalup makes no representations or warranties about its accuracy, completeness or suitability for any particular purpose and disclaims all liability for all expenses, losses, damages and costs which you might incur as a result of the data being inaccurate or incomplete in any way and for any reason.

Lot 1001 (14) Camberwarra Drive, Craigie

LOT 900 (57) MARRI ROAD, DUNCRAIG



A



B





90 Boas Ave, Joondalup WA 6027
 PO Box 21, Joondalup WA 6919
 Ph: 08 9400 4000
 Fax: 08 9300 1383
 info@joondalup.wa.gov.au
 www.joondalup.wa.gov.au



Scale(A4):1:8000

Date: 13 September 2016

DISCLAIMER: While every care is taken to ensure the accuracy of this data, the City of Joondalup makes no representations or warranties about its accuracy, completeness or suitability for any particular purpose and disclaims all liability for all expenses, losses, damages and costs which you might incur as a result of the data being inaccurate or incomplete in any way and for any reason.

**Lot 900 (57) Marri Road,
 Duncraig**

LOT 12223 (12) BLACKWATTLE PARADE, PADBURY



A



B



