

LOT 2 (20) KANANGRA CRESCENT, GREENWOOD





90 Boas Ave, Joondalup WA 6027
PO Box 21, Joondalup WA 6919
Ph: 08 9400 4000
Fax: 08 9300 1383



Scale (A4):1:8000

Date: 2 November 2015

DISCLAIMER: While every care is taken to ensure the accuracy of this data, the City of Joondalup makes no representations or warranties about its accuracy, completeness or suitability for any particular purpose and disclaims all liability for all expenses, losses, damages and costs which you might incur as a result of the data being inaccurate or incomplete in any way and for any reason.

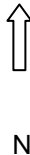
**Lots 2 (20) Kanangra Crescent,
Greenwood**

LOT 23 (77) GIBSON AVENUE, PADBURY





90 Boas Ave, Joondalup WA 6027
PO Box 21, Joondalup WA 6919
Ph: 08 9400 4000
Fax: 08 9300 1383
info@joondalup.wa.gov.au
www.joondalup.wa.gov.au



Scale(A4):1:8000

Date: 28 November 2016

DISCLAIMER: While every care is taken to ensure the accuracy of this data, the City of Joondalup makes no representations or warranties about its accuracy, completeness or suitability for any particular purpose and disclaims all liability for all expenses, losses, damages and costs which you might incur as a result of the data being inaccurate or incomplete in any way and for any reason.

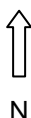
Lot 23 (77) Gibson Avenue, Padbury

LOT 803 (15) BURLOS COURT, JOONDALUP





90 Boas Ave, Joondalup WA 6027
 PO Box 21, Joondalup WA 6919
 Ph: 08 9400 4000
 Fax: 08 9300 1383
 info@joondalup.wa.gov.au
 www.joondalup.wa.gov.au



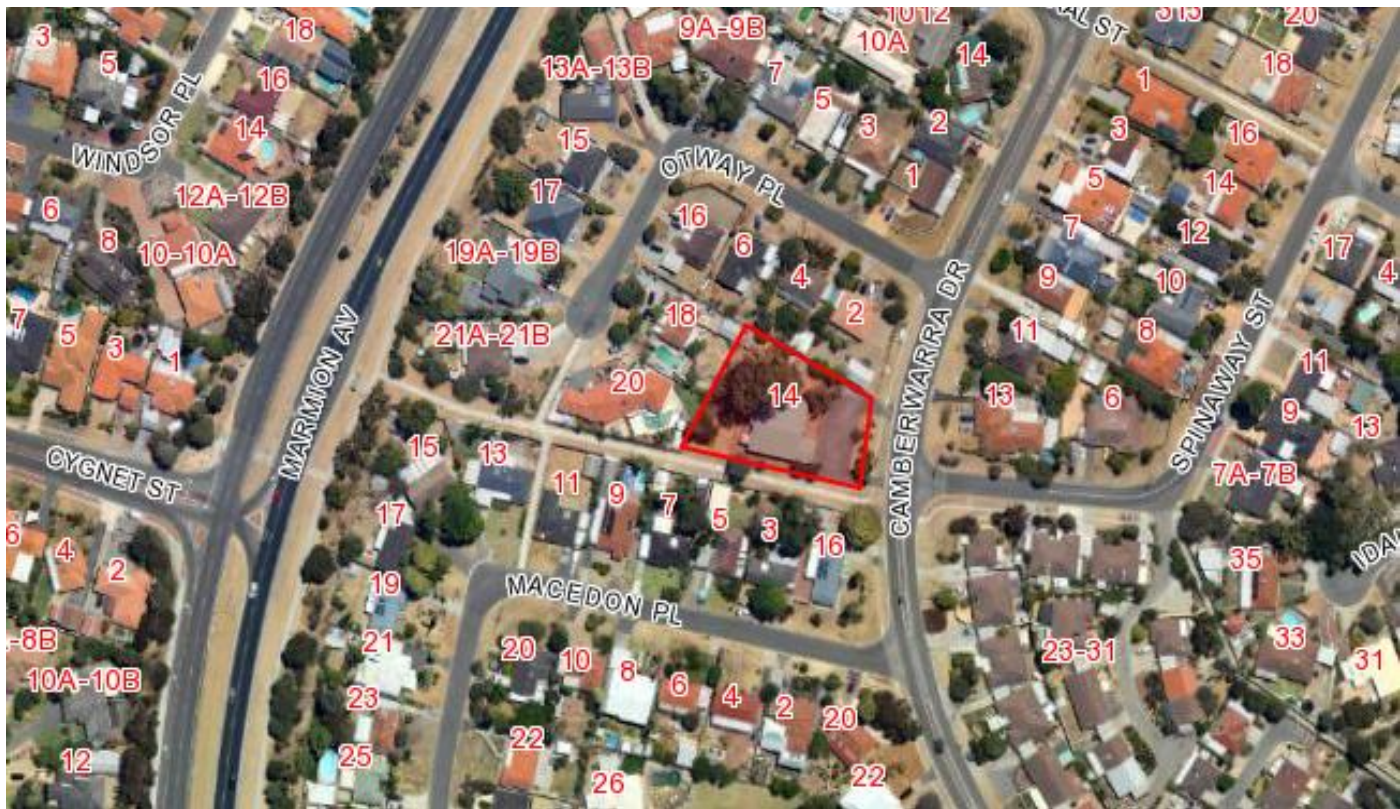
Scale(A4):1:8000

Date: 28 November 2016

DISCLAIMER: While every care is taken to ensure the accuracy of this data, the City of Joondalup makes no representations or warranties about its accuracy, completeness or suitability for any particular purpose and disclaims all liability for all expenses, losses, damages and costs which you might incur as a result of the data being inaccurate or incomplete in any way and for any reason.

Lot 803 (15) Burlos Court, Joondalup

LOT 1001 (14) CAMBERWARRA DRIVE, CRAIGIE





90 Boas Ave, Joondalup WA 6027
PO Box 21, Joondalup WA 6919
Ph: 08 9400 4000
Fax: 08 9300 1383
info@joondalup.wa.gov.au
www.joondalup.wa.gov.au



Scale(A4):1:8000

Date: 28 November 2016

DISCLAIMER: While every care is taken to ensure the accuracy of this data, the City of Joondalup makes no representations or warranties about its accuracy, completeness or suitability for any particular purpose and disclaims all liability for all expenses, losses, damages and costs which you might incur as a result of the data being inaccurate or incomplete in any way and for any reason.

Lot 1001 (14) Camberwarra Drive, Craigie

LOT 900 (57) MARRI ROAD, DUNCRAIG





90 Boas Ave, Joondalup WA 6027
 PO Box 21, Joondalup WA 6919
 Ph: 08 9400 4000
 Fax: 08 9300 1383
 info@joondalup.wa.gov.au
 www.joondalup.wa.gov.au



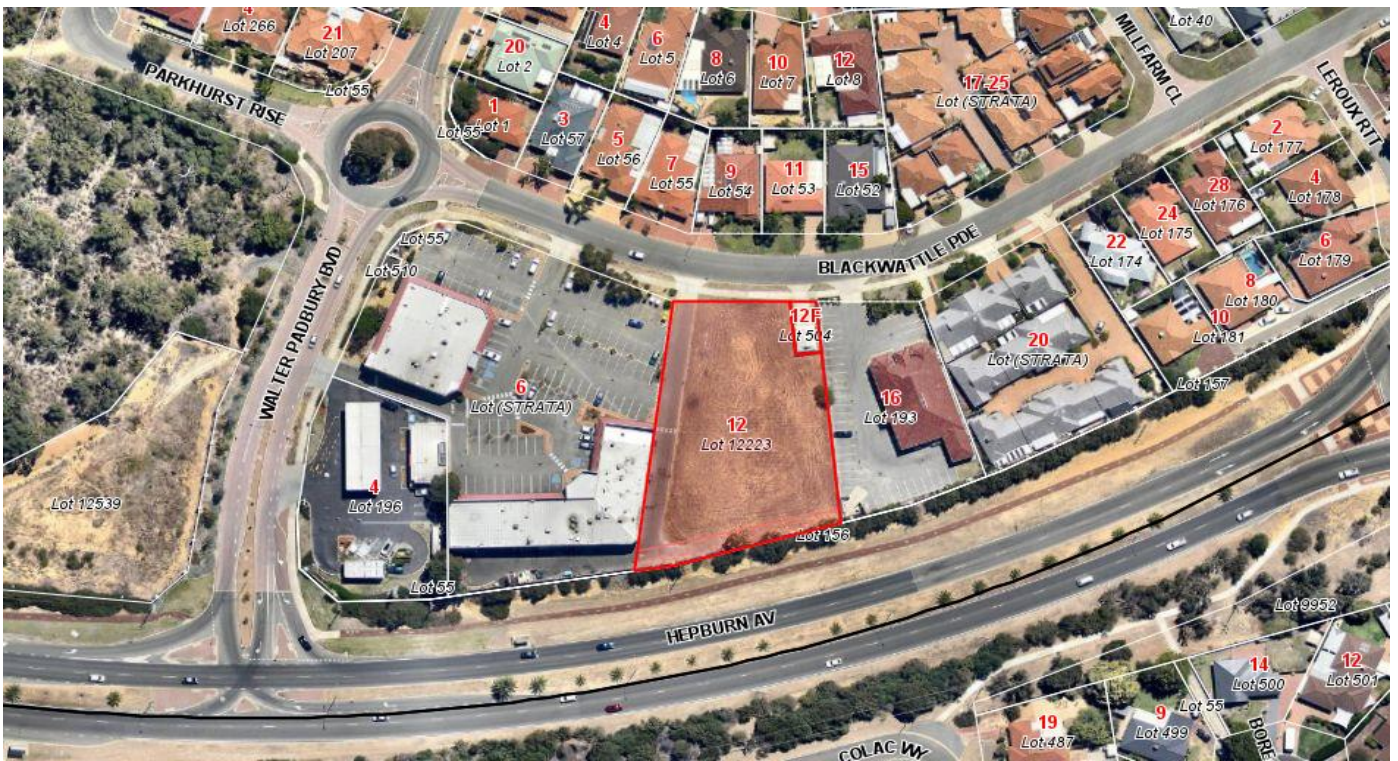
Scale(A4):1:8000

Date: 28 November 2016

DISCLAIMER: While every care is taken to ensure the accuracy of this data, the City of Joondalup makes no representations or warranties about its accuracy, completeness or suitability for any particular purpose and disclaims all liability for all expenses, losses, damages and costs which you might incur as a result of the data being inaccurate or incomplete in any way and for any reason.

**Lot 900 (57) Marri Road,
 Duncraig**

LOT 12223 (12) BLACKWATTLE PARADE, PADBURY





 **City of Joondalup**
90 Boas Ave, Joondalup WA 6027
PO Box 21, Joondalup WA 6919
Ph: 08 9400 4000
Fax: 08 9300 1383
info@joondalup.wa.gov.au
www.joondalup.wa.gov.au



Scale(A4):1:8000
Date: 2 November 2015
DISCLAIMER: While every care is taken to ensure the accuracy of this data, the City of Joondalup makes no representations or warranties about its accuracy, completeness or suitability for any particular purpose and disclaims all liability for all expenses, losses, damages and costs which you might incur as a result of the data being inaccurate or incomplete in any way and for any reason.

**Lot 12223 (12) Blackwattle Parade,
Padbury**