

LOT 200 (24), LOT 201 (22) AND LOT 202 (20) KANANGRA CRESCENT, GREENWOOD





90 Boas Ave, Joondalup WA 6027
PO Box 21, Joondalup WA 6919
Ph: 08 9400 4000
Fax: 08 9300 1383



Scale (A4):1:8000

Date: 2 November 2015

DISCLAIMER: While every care is taken to ensure the accuracy of this data, the City of Joondalup makes no representations or warranties about its accuracy, completeness or suitability for any particular purpose and disclaims all liability for all expenses, losses, damages and costs which you might incur as a result of the data being inaccurate or incomplete in any way and for any reason.

**Lots 200, 201 and 202 Kanangra
Crescent, Greenwood**

LOT 23 (77) GIBSON AVENUE, PADBURY





90 Boas Ave, Joondalup WA
6027
PO Box 21, Joondalup WA 6919
Ph: 08 9400 4000
Fax: 08 9300 1383
info@joondalup.wa.gov.au
www.joondalup.wa.gov.au



N

Scale(A4):1:8000

Date: 24 March 2016

DISCLAIMER: While every care is taken to ensure the accuracy of this data, the City of Joondalup makes no representations or warranties about its accuracy, completeness or suitability for any particular purpose and disclaims all liability for all expenses, losses, damages and costs which you might incur as a result of the data being inaccurate or incomplete in any way and for any reason.

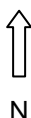
Lot 23 (77) Gibson Avenue, Padbury

LOT 803 (15) BURLOS COURT, JOONDALUP





90 Boas Ave, Joondalup WA 6027
 PO Box 21, Joondalup WA 6919
 Ph: 08 9400 4000
 Fax: 08 9300 1383
 info@joondalup.wa.gov.au
 www.joondalup.wa.gov.au



Scale(A4):1:8000

Date: 24 March 2016



DISCLAIMER: While every care is taken to ensure the accuracy of this data, the City of Joondalup makes no representations or warranties about its accuracy, completeness or suitability for any particular purpose and disclaims all liability for all expenses, losses, damages and costs which you might incur as a result of the data being inaccurate or incomplete in any way and for any reason.

Lot 803 (15) Burlos Court, Joondalup

LOT 1001 (14) CAMBERWARRA DRIVE, CRAIGIE



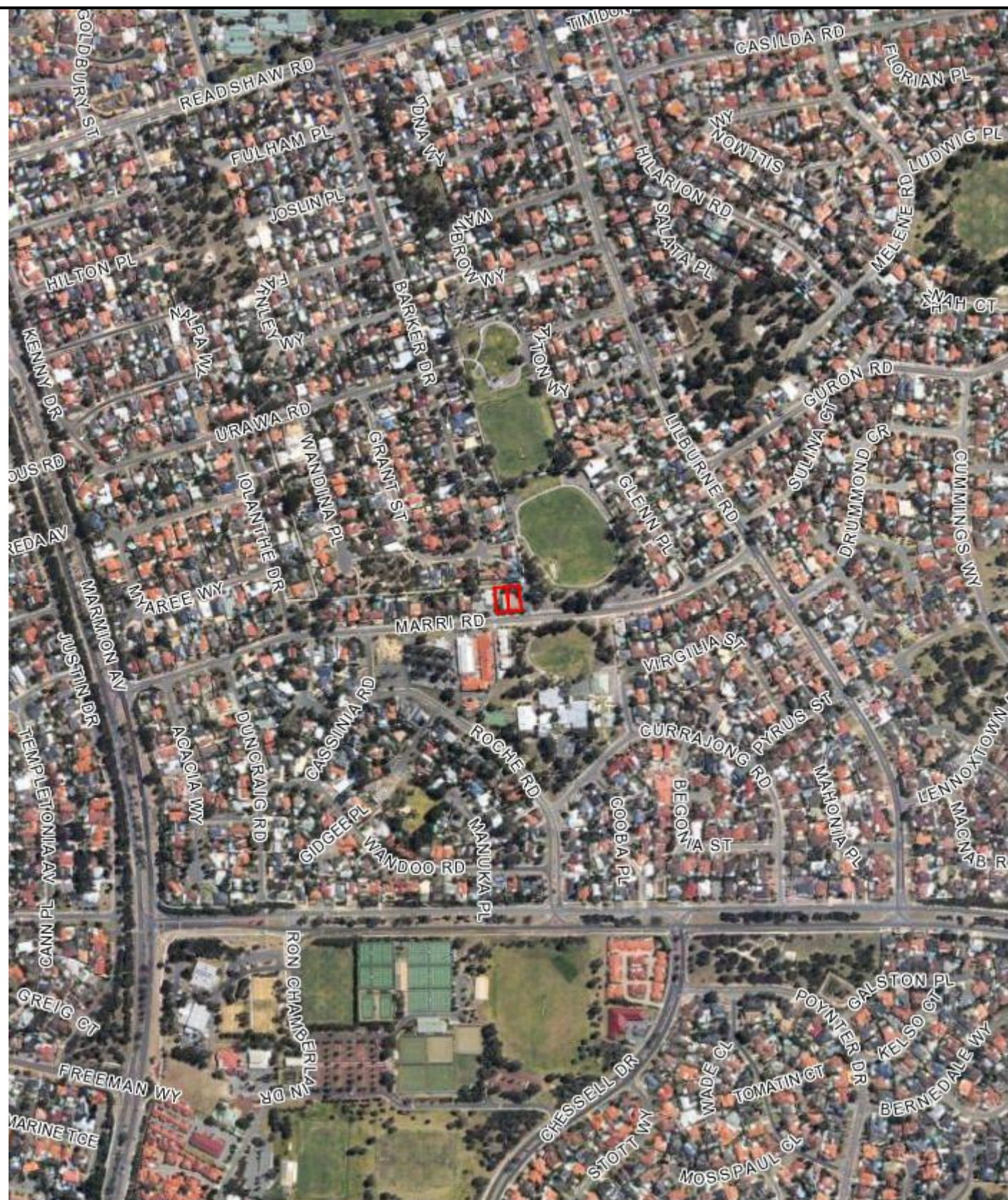


 <p>90 Boas Ave, Joondalup WA 6027 PO Box 21, Joondalup WA 6919 Ph: 08 9400 4000 Fax: 08 9300 1383 info@joondalup.wa.gov.au www.joondalup.wa.gov.au</p>	 N	Scale(A4):1:8000	Lot 1001 (14) Camberwarra Drive, Craigie
		Date: 24 March 2016	
		DISCLAIMER: While every care is taken to ensure the accuracy of this data, the City of Joondalup makes no representations or warranties about its accuracy, completeness or suitability for any particular purpose and disclaims all liability for all expenses, losses, damages and costs which you might incur as a result of the data being inaccurate or incomplete in any way and for any reason.	



LOTS 642/643 (57/59) MARRI ROAD, DUNCRAIG





90 Boas Ave, Joondalup WA 6027
PO Box 21, Joondalup WA 6919
Ph: 08 9400 4000
Fax: 08 9300 1383
info@joondalup.wa.gov.au
www.joondalup.wa.gov.au



N

Scale(A4):1:8000

Date: 24 March 2016

DISCLAIMER: While every care is taken to ensure the accuracy of this data, the City of Joondalup makes no representations or warranties about its accuracy, completeness or suitability for any particular purpose and disclaims all liability for all expenses, losses, damages and costs which you might incur as a result of the data being inaccurate or incomplete in any way and for any reason.

**Lots 642 & 643 (57/59) Marri Road,
Duncraig**

LOT 12223 (12) BLACKWATTLE PARADE, PADBURY



