

LOT 2 (20) KANANGRA CRESCENT, GREENWOOD



A



B







90 Boas Ave, Joondalup WA 6027  
PO Box 21, Joondalup WA 6919  
Ph: 08 9400 4000  
Fax: 08 9300 1383



Scale (A4):1:8000

Date: 2 November 2015

DISCLAIMER: While every care is taken to ensure the accuracy of this data, the City of Joondalup makes no representations or warranties about its accuracy, completeness or suitability for any particular purpose and disclaims all liability for all expenses, losses, damages and costs which you might incur as a result of the data being inaccurate or incomplete in any way and for any reason.

**Lots 2 (20) Kanangra Crescent,  
Greenwood**



LOT 803 (15) BURLOS COURT, JOONDALUP



A



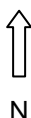
B







90 Boas Ave, Joondalup WA 6027  
 PO Box 21, Joondalup WA 6919  
 Ph: 08 9400 4000  
 Fax: 08 9300 1383  
 info@joondalup.wa.gov.au  
 www.joondalup.wa.gov.au



Scale(A4):1:8000

Date: 25 January 2017

DISCLAIMER: While every care is taken to ensure the accuracy of this data, the City of Joondalup makes no representations or warranties about its accuracy, completeness or suitability for any particular purpose and disclaims all liability for all expenses, losses, damages and costs which you might incur as a result of the data being inaccurate or incomplete in any way and for any reason.

**Lot 803 (15) Burlos Court, Joondalup**



**LOT 1001 (14) CAMBERWARRA DRIVE, CRAIGIE – PROPERTY SINCE DEMOLISHED**



A

**B**





90 Boas Ave, Joondalup WA 6027  
 PO Box 21, Joondalup WA 6919  
 Ph: 08 9400 4000  
 Fax: 08 9300 1383  
 info@joondalup.wa.gov.au  
 www.joondalup.wa.gov.au



Scale(A4):1:8000

Date: 25 January 2017

DISCLAIMER: While every care is taken to ensure the accuracy of this data, the City of Joondalup makes no representations or warranties about its accuracy, completeness or suitability for any particular purpose and disclaims all liability for all expenses, losses, damages and costs which you might incur as a result of the data being inaccurate or incomplete in any way and for any reason.

**Lot 1001 (14) Camberwarra Drive, Craigie**



LOT 900 (57) MARRI ROAD, DUNCRAIG



A



B







90 Boas Ave, Joondalup WA 6027  
 PO Box 21, Joondalup WA 6919  
 Ph: 08 9400 4000  
 Fax: 08 9300 1383  
 info@joondalup.wa.gov.au  
 www.joondalup.wa.gov.au



Scale(A4):1:8000

Date: 25 January 2017

DISCLAIMER: While every care is taken to ensure the accuracy of this data, the City of Joondalup makes no representations or warranties about its accuracy, completeness or suitability for any particular purpose and disclaims all liability for all expenses, losses, damages and costs which you might incur as a result of the data being inaccurate or incomplete in any way and for any reason.

**Lot 900 (57) Marri Road,  
 Duncraig**



## LOT 12223 (12) BLACKWATTLE PARADE, PADBURY



A



B







 **City of  
Joondalup**  
90 Boas Ave, Joondalup WA 6027  
PO Box 21, Joondalup WA 6919  
Ph: 08 9400 4000  
Fax: 08 9300 1383  
info@joondalup.wa.gov.au  
www.joondalup.wa.gov.au



Scale(A4):1:8000  
Date: 2 November 2015  
DISCLAIMER: While every care is taken to ensure the accuracy of this data, the City of Joondalup makes no representations or warranties about its accuracy, completeness or suitability for any particular purpose and disclaims all liability for all expenses, losses, damages and costs which you might incur as a result of the data being inaccurate or incomplete in any way and for any reason.

**Lot 12223 (12) Blackwattle Parade,  
Padbury**