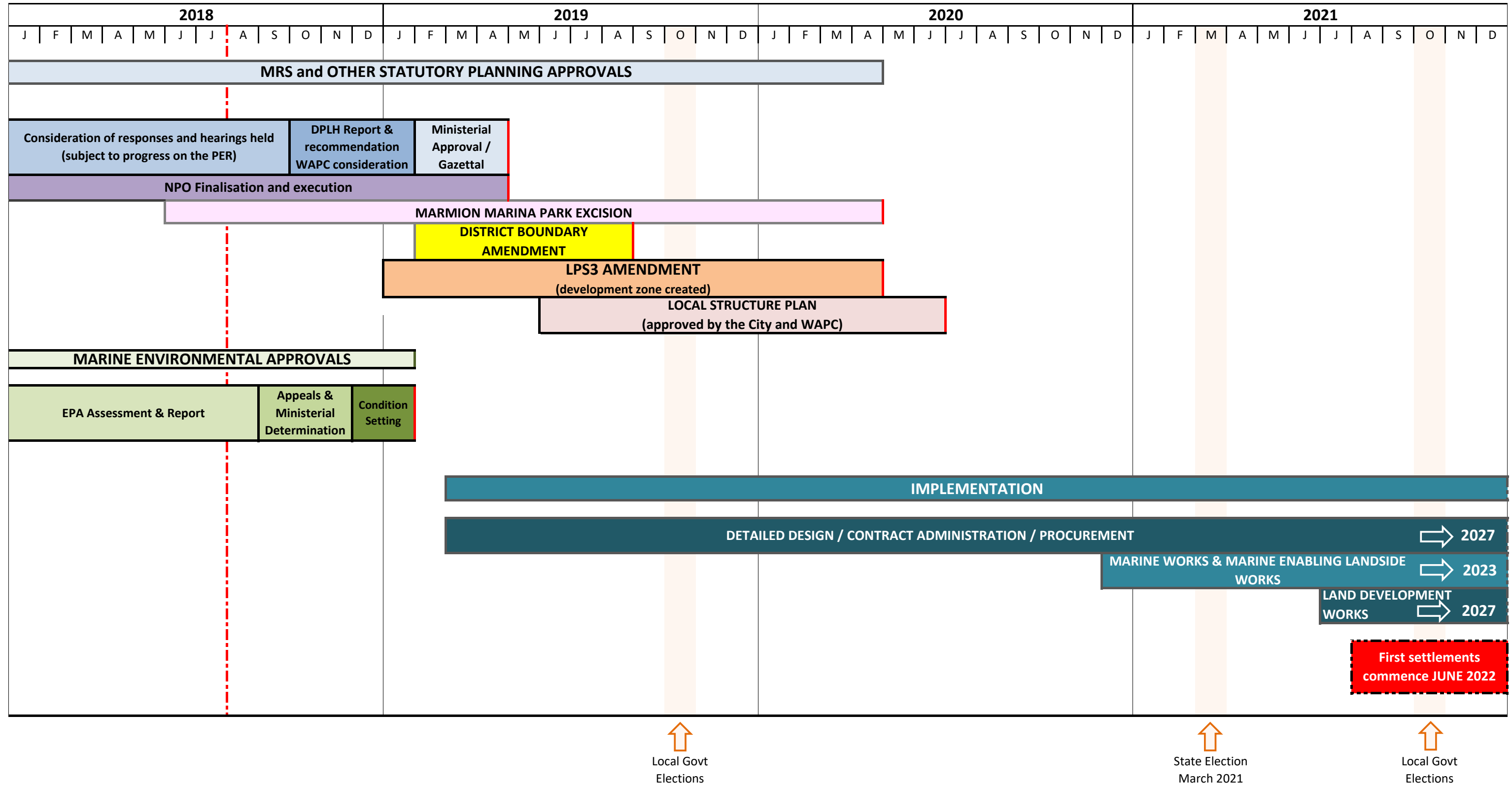


INDICATIVE OCEAN REEF MARINA TIMELINE (as at 30 June 2018)

APPENDIX 5
ATTACHMENT 1



This timeline is INDICATIVE only and is constantly being reviewed and update (in collaboration with LandCorp)

Ocean Reef Marina Project Governance Structure

Government Steering Committee

CoJ

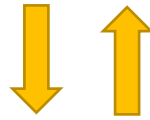


LandCorp

DoT

DoPL&H

“Existing high level Stakeholder forum to share relevant project information and facilitate the coordination and resolution of common issues associated with the timely implementation of the Ocean Reef Marina project”



Project Steering Group

DoT

CoJ

LandCorp

DoPL&H

DoWER

“Nominees of each agency work together collaboratively to seek to deliver outcomes consistent with Project Vision & Objectives”



Technical Officer's Group

DoPL&H

LandCorp

CoJ

DoT

DoWER

Service
Authorities

DoF

As Needed e.g.
PTA, MRWA

“Senior Officers Working Group to review and provide day to day technical guidance and recommended options in collaboration with LandCorp project team and inform PSG Agenda”