
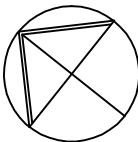
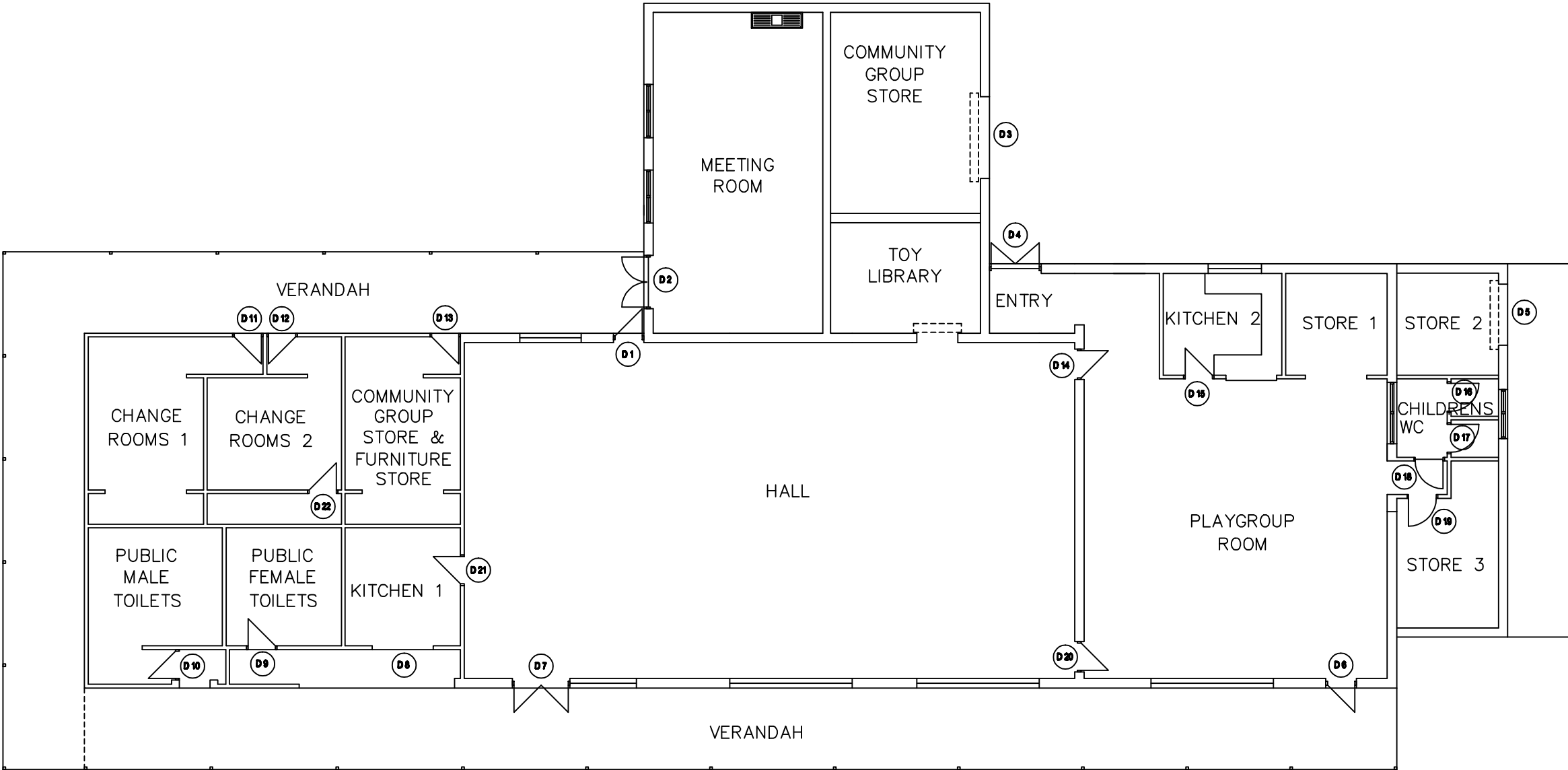
 <p>City of Joondalup</p>	<p>DISCLAIMER: While every care is taken to ensure the accuracy of this data, the City of Joondalup makes no representations or warranties about its accuracy, completeness or suitability for any particular purpose and disclaims all liability for all expenses, losses, damages and costs which you might incur as a result of the data being inaccurate or incomplete in any way and for any reason.</p>	<p>Aerial map of Emerald Park</p>	<p>8/04/2019</p>	
			<p>1:2257</p>	

SCHEDULE OF AREAS:

CHANGE ROOM 1	21m²
CHANGE ROOM 2	16m²
COMMUNITY GROUP & FURNITURE STORE	19m²
KITCHEN 1	12m²
PUBLIC FEMALE TOILET	12m²
PUBLIC MALE TOILET	17m²
HALL	178m²
MEETING ROOM	47m²
COMMUNITY GROUP STORE	26m²
TOY LIBRARY	14m²
KITCHEN 2	11m²
STORE 1	9m²
STORE 2	9m²
STORE 3	13m²
CHILDREN'S TOILET	18m²
PLAYGROUP ROOM	86m²

TOTAL AREA 508m²



DRAWING TITLE:
FLOOR PLAN

ADDRESS:
45 EMERALD WAY, EDGEWATER

City of Joondalup
Building Asset Mngmt

PO Box 21, Joondalup
Western Australia, 6919
Telephone: (08) 9400 4000
Facsimile: (08) 9400 4501



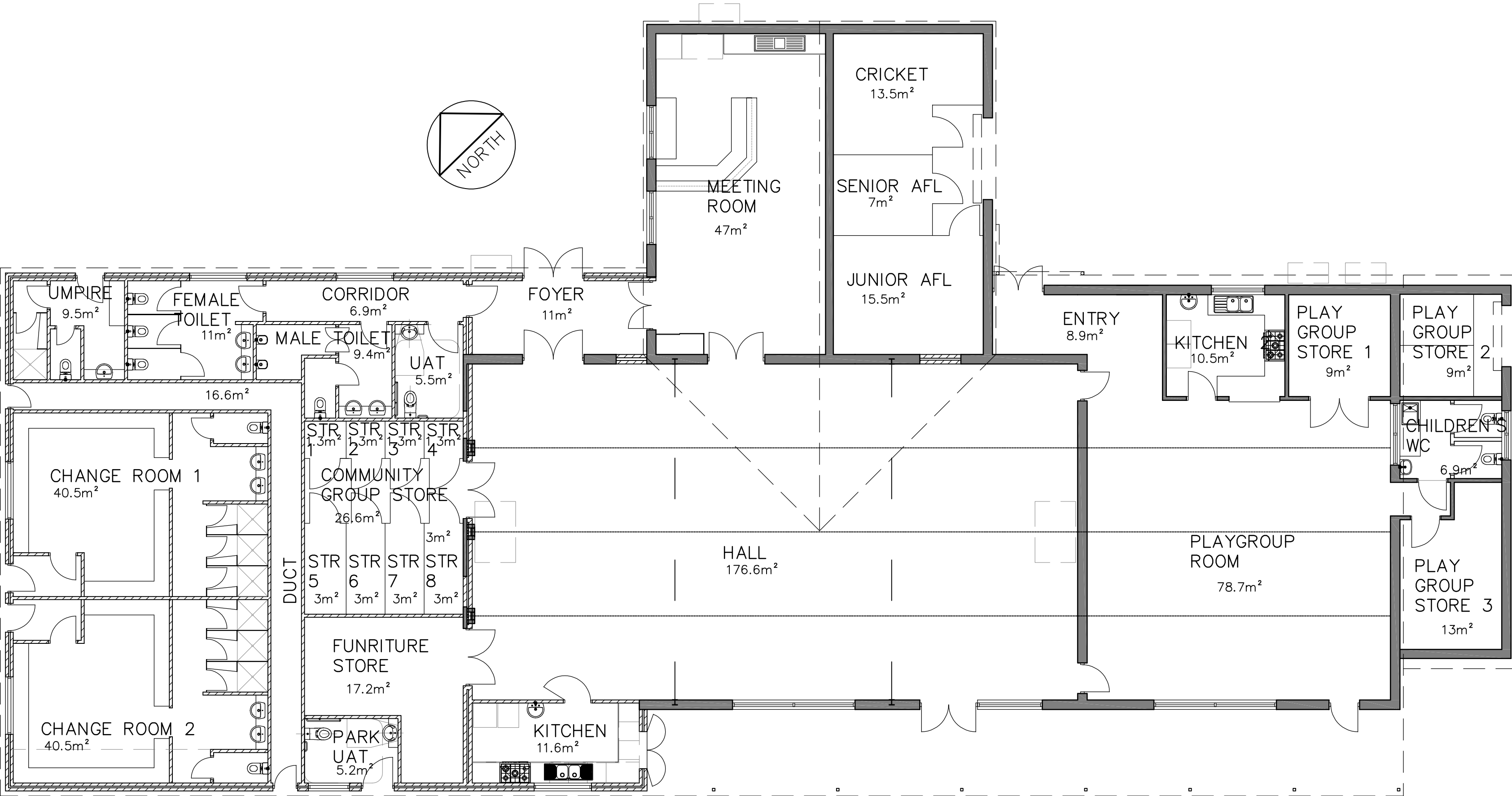
DATE:
MAY 11
SCALE:
1:150
DRAWN:
D.W

BUILDING No:
1067
DRAWING No:
A001


BUILDING NAME:
EMERALD PARK
CLUBROOMS

THIS DRAWING TO BE PLOTTED ON A3 SIZE PAPER - DO NOT
SCALE, IF IN DOUBT ENQUIRE WITH ASSET MGT 94004340

THIS DRAWING IS THE PROPERTY OF THE CITY OF JOONDALUP BUILDING ASSET
MANAGEMENT AND MAY NOT BE COPIED OR USED WITHOUT CONSENT.
CHECK ALL DIMENSIONS BEFORE FABRICATION AND AGAINST ON SITE DIMENSIONS



FLOOR PLAN
SCALE 1:100

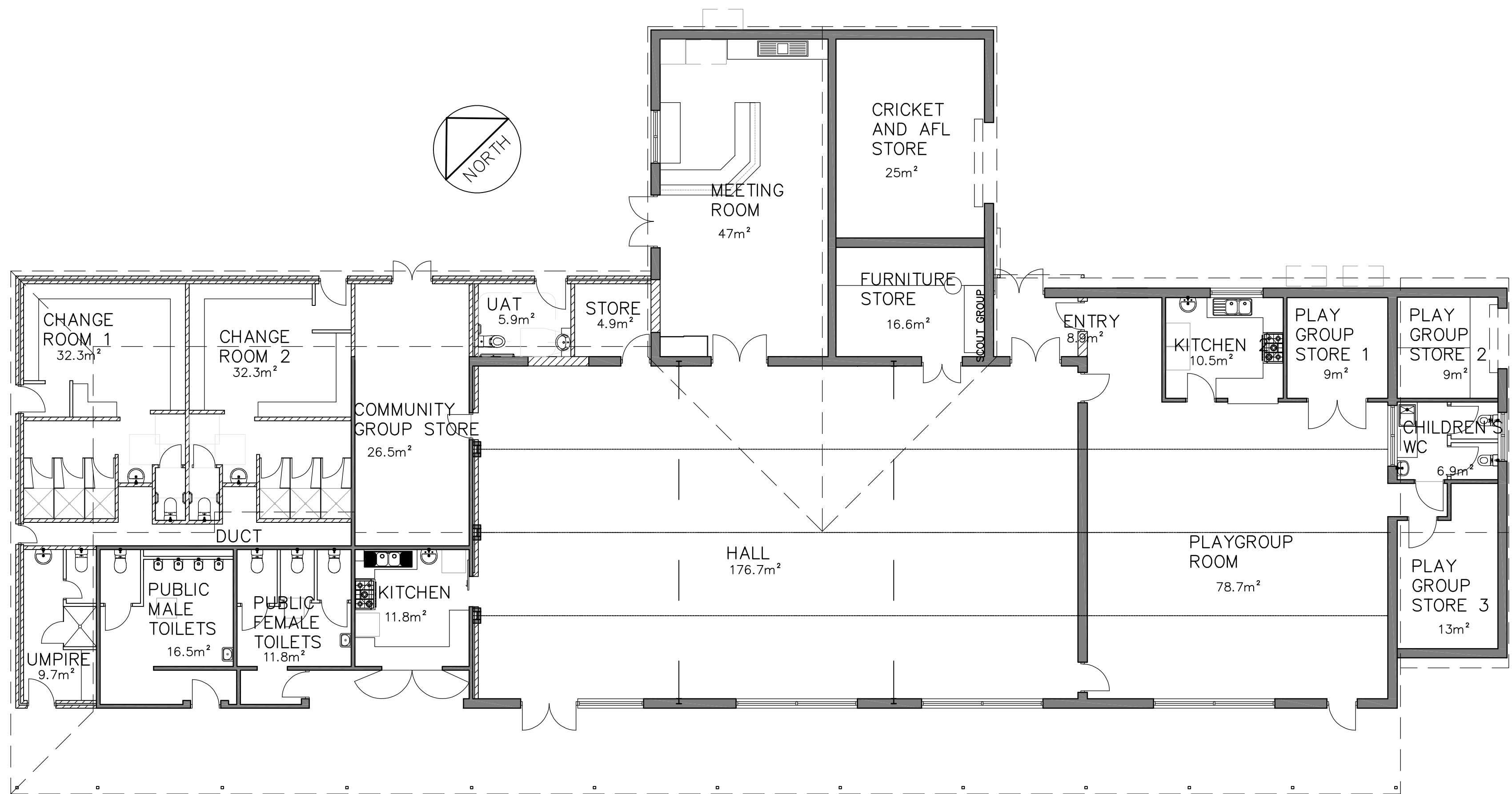
REV	DATE:	REMARKS:	REV	DATE:	REMARKS:	DRAWING TITLE:	PROJECT:	City of Joondalup Asset Management	DATE:	BUILDING No:	BUILDING NAME:
A	23.10.18	PROPOSED FLOORPLAN	E			FLOOR PLAN	FACILITY AND REFURBISHMENT	PO Box 21, Joondalup Western Australia, 6919 Telephone: (08) 9400 4000 Facsimile: (08) 9300 1383	March 18	2034	EMERALD PARK CLUBROOMS
B	06.11.18	FLOORPLAN AMENDED	F						SCALE: 1:100		
C	12.11.18	CAGES AMENDED	G						DRAWN: D.S		
D			H						CHKD/APRVD:	A 2.00	C OPTION 1
THIS DRAWING IS THE PROPERTY OF "THE CITY OF JOONDALUP ASSET MANAGEMENT" AND MAY NOT BE COPIED OR USED WITHOUT CONSENT. CHECK ALL DIMENSIONS BEFORE FABRICATION, AGAINST ON SITE DIMENSIONS.						THIS DRAWING TO BE PLOTTED ON A2 SIZE PAPER - DO NOT SCALE, IF IN DOUBT ENQUIRE WITH ASSET MGT 94004340		45 EMERALD WAY, EDGEWATER WA 6027			

OPINION OF PROBABLE COST


PROJECT: COJ Emerald Park Clubroom Refurbishment

Itemised Costs - OPT1

Item	Description	Qty	Unit	Rate	Total
<u>ITEMISED COSTS</u>					
<u>All items include contingencies, professional fees and building cost escalation up to 2021</u>					
1	Change room extension and refurbishment.				276,220
2	New umpire's change room.				50,580
3	New toilets (including female, male, internal UAT, corridor and foyer).				178,430
4	Refurbish community group store.				26,110
5	New park UAT.				31,930
6	New furniture store.				28,160
7	New kitchen.				59,390
8	Hall works (window, doors, external security screens, bricking up of internal door from hall to junior AFL store).				39,040
9	External Works				33,930
10	Temporary Facilities				28,520
	<u>TOTAL</u>				<u>752,310</u>



FLOOR PLAN
SCALE 1:100

REV	DATE:	REMARKS:	REV	DATE:	REMARKS:	DRAWING TITLE:	PROJECT:	<div>City of Joondalup Asset Management</div> <div>PO Box 21, Joondalup Western Australia, 6919 Telephone: (08) 9400 4000 Facsimile: (08) 9300 1383</div> <div></div>	DATE:	BUILDING No:	BUILDING NAME:
A	23.10.18	PROPOSED FLOORPLAN	E	24.04.19	LAYOUT AMENDED	FLOOR PLAN	FACILITY AND REFURBISHMENT		March 18	2034	EMERALD PARK CLUBROOMS
B	06.11.18	FLOORPLAN AMENDED	F						SCALE: 1:100		
C	12.11.18	CAGES AMENDED	G						DRAWN: D.S	A 2.00	E OPTION 2
D	15.04.19	SCOPE OF WORK AMENDED	H						CHKD/APRVD:		
THIS DRAWING IS THE PROPERTY OF "THE CITY OF JOONDALUP ASSET MANAGEMENT" AND MAY NOT BE COPIED OR USED WITHOUT CONSENT. CHECK ALL DIMENSIONS BEFORE FABRICATION, AGAINST ON SITE DIMENSIONS.						THIS DRAWING TO BE PLOTTED ON A2 SIZE PAPER - DO NOT SCALE, IF IN DOUBT ENQUIRE WITH ASSET MGT 94004340			45 EMERALD WAY, EDGEWATER WA 6027		

OPINION OF PROBABLE COST

PROJECT: COJ Emerald Park Clubroom Refurbishment

Itemised Costs - 31 Aug 19

Item	Description	Qty	Unit	Rate	Total
<u>ITEMISED COSTS</u>					
<u>All items include contingencies, professional fees and building cost escalation up to 2021</u>					
1	Change room extension and refurbishment.				153,000
2	New umpire's change room.				34,300
3	Male toilets reburishment				21,000
4	New external store				12,400
5	New internal store				6,400
6	New park UAT				22,000
7	Hall works				13,200
8	Meeting room works				6,700
9	Refurbish community group store.				3,000
10	External Works				34,000
11	Temporary Facilities				23,500
	<u>TOTAL</u>				<u>329,500</u>



COMMUNITY ENGAGEMENT OUTCOMES REPORT

Emerald Park, Edgewater —
Proposed Clubrooms Refurbishment

CONTENTS

OVERVIEW 3

STAKEHOLDERS..... 4

ENGAGEMENT MATERIALS 5

RESPONSE RATE 8

DEMOGRAPHICS 9

COMMENT FORM QUESTIONS 13

APPENDIX..... 17

OVERVIEW

The community was invited to provide feedback from 8 March 2019 to 5 April 2019 on a proposal to extend and refurbish the existing clubrooms facility at Emerald Park in Edgewater. Feedback was sought by way of a Comment Form to determine the overall level of community support for the proposal.

The City collected a total of 30 valid responses throughout the 29-day advertised engagement period. A total of 8 submissions were received from park user and community groups, and 22 were received from other community members. This indicates an overall response rate of 8.2%.

Respondents were asked to indicate their overall level of support for the refurbishment on a 5-point scale from “strongly oppose” to “strongly support”. 28 respondents indicated that they either “support” or “strongly support” the proposal, with 1 respondent indicating “strongly oppose” and 1 respondent indicating “neutral”.

Additional comments from respondents included general support for the proposal; concern about works interrupting access to the Clubrooms, toilets and car park; concern about excessive noise in the evenings/increased usage; and requests for additional park infrastructure or additional/alternative upgrades to the Clubrooms.

STAKEHOLDERS

A total of 329 stakeholders were *directly* engaged by the City. Stakeholders identified included:

- Local residents and ratepayers within a 200 metres radius of Emerald Park Clubrooms = 203
- Community Engagement Network Members residing in Edgewater = 118
- Emerald Park user and community groups = 8
 - Edgewater Woodvale Junior Football Club
 - ECU Jets Football Club
 - Edgewater Senior Cricket Club
 - Edgewater Out of School Care
 - Emerald Park Craft Group
 - Emerald Park Play Group
 - Country Women's Association of Western Australia Joondalup and District
 - Edgewater Residents Association

Additional stakeholders, including park visitors and interested residents and ratepayers living further than 200 metres away from the park, were also *indirectly* engaged by the City via the engagement materials described below.

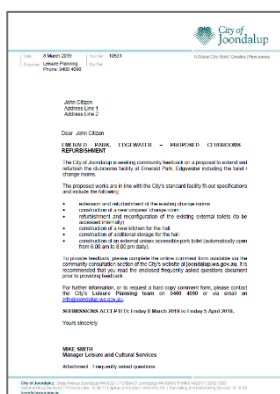
ENGAGEMENT MATERIALS

Local residents and ratepayers within a 200 metres radius of Emerald Park Clubrooms were sent information packs through the post on 8 March 2019 containing a cover letter and Frequently Asked Questions document. These stakeholders were directed via the cover letter to the City's website to complete the online Comment Form. They were also advised that hard-copy Comment Forms were available on request.

Community Engagement Network members residing in Edgewater were sent emails on 8 March 2019 advising them of the engagement and linking them to the Frequently Asked Questions document and the online Comment Form.

The 8 Emerald Park user and community groups were sent emails on 8 March 2019 advising them of the engagement and seeking a formal written response representing the view of their group via a hard-copy Comment Form. A printable copy of the Comment Form and Frequently Asked Questions document were attached to the email.

Cover letter to local residents and ratepayers within a 200 metres radius of Emerald Park Clubrooms (see Appendix 1 for full):



Email to Community Engagement Network members residing in Edgewater and email to park user and community groups (see Appendix 2–3 for full):



Frequently Asked Questions document (see Appendix 4 for full):

Emerald Park, Edgewater – proposed clubrooms refurbishment
Frequently Asked Questions

What is the purpose of the community engagement?
To ensure community feedback is a key part of the decision-making process for the proposed refurbishment of the clubrooms at Emerald Park.

Why is the City progressing with refurbishment of Emerald Park?
The existing clubrooms are in poor condition, with many of the internal and external walls in need of repair. The City is committed to providing a high-quality recreational facility for the community and the refurbishment of the clubrooms is a key part of this commitment.

What works are not proposed as part of the refurbishment?
The refurbishment of the clubrooms does not include the replacement of the roof, the replacement of the external walls, or the replacement of the external walls.

What works are being proposed as part of the refurbishment?
The refurbishment of the clubrooms includes the replacement of the internal walls, the replacement of the external walls, and the replacement of the external walls.

Hard-copy and online Comment Forms (see Appendix 5–6 for full):

Emerald Park, Edgewater – proposed clubrooms refurbishment
Comment Form

Your details

Name: _____

Address: _____

Contact details: _____

Comments

How do you currently use Emerald Park Clubrooms? Please tick all that apply.

☐ I do not currently use the clubrooms.

☐ I use the clubrooms for social gatherings.

☐ I use the clubrooms for sports and recreation.

☐ I use the clubrooms for other purposes.

Emerald Park, Edgewater – Proposed Clubroom Refurbishment
Comment Form

The City of Joondalup is seeking community feedback on a proposal to extend and refurbish the Emerald Park clubrooms in Edgewater.

It is recommended that you review the [Frequently Asked Questions](#) document prior to providing feedback. If you have any questions on the proposal, please contact the City's Leisure Planning Team on 9400 4990 or email [leisure@joondalup.wa.gov.au](#).

City of Joondalup | 100 Ross Avenue, Joondalup WA 6107 | PO Box 71, Joondalup WA 6109
T: 9400 4000 F: 9400 1000 | [joondalup.wa.gov.au](#) | [info@joondalup.wa.gov.au](#)

Next

In addition to directly contacting identified stakeholders via post and email, the City advertised the engagement to other community members via the following means:

- Webpage linked through the “Community Consultation” section of the City’s website visible 8 March 2019 to 5 April 2019.
- Signage erected at 3 locations around the perimeter of Emerald Park 8 March 2019 to 5 April 2019.

Community engagement webpage on the City’s website (see Appendix 7 for full):

Emerald Park, Edgewater – Proposed Clubroom Refurbishment

The City of Joondalup is seeking community feedback on a proposal to extend and refurbish the Emerald Park clubrooms in Edgewater. This proposal includes a new clubroom and refurbishment of the existing clubrooms at Emerald Park, Edgewater.

Comments

How do you currently use Emerald Park Clubrooms? Please tick all that apply.

☐ I do not currently use the clubrooms.

☐ I use the clubrooms for social gatherings.

☐ I use the clubrooms for sports and recreation.

☐ I use the clubrooms for other purposes.

Signage erected at Emerald Park (see Appendix 8–9 for full):



Emerald Park – proposed clubrooms refurbishment

The City of Joondalup is seeking community feedback on a proposal to extend and refurbish the existing clubrooms facility at Emerald Park, Edgewater.

For further information on this project, or to provide feedback, please visit the Community Consultation section of the City's website at joondalup.wa.gov.au or contact the City's Leisure Planning team on 9400 4090.

Consultation closes **Friday 5 April 2019**.



■ Children compound and temporary facilities (construction only) ■ Proposed facility extension area

RESPONSE RATE

The City collected a total of 30 valid responses throughout the 29-day advertised engagement period. Responses that were considered valid include all those which contained contact details enabling identification and were submitted within the advertised engagement period.

Of the 203 residents and ratepayers within a 200 metres radius of Emerald Park Clubrooms, 8 submitted feedback. Further, 16 Community Engagement Network members submitted feedback and 3 community members who were not directly engaged also submitted feedback. In relation to park user and community groups, the City received a response from representatives of the Edgewater Woodvale Junior Football Club, ECU Jets Football Club, Edgewater Senior Cricket Club, Edgewater Out of School Care, Emerald Park Craft Group, Emerald Park Play Group, Country Women's Association of Western Australia Joondalup and District and Edgewater Residents Association. This indicates an overall response rate of 8.2%. This data is shown in the table below.

	Forms sent	Forms received	Response rate
Responses received by stakeholder type:	N	N*	%
Local residents and ratepayers within a 200 metres radius of Emerald Park Clubrooms	203	8	3.9%
Community Engagement Network Members	118	16	13.6%
Emerald Park user and community groups	8	8	100.0%
Edgewater Woodvale Junior Football Club	1	1	100.0%
ECU Jets Football Club	1	1	100.0%
Edgewater Senior Cricket Club	1	1	100.0%
Edgewater Out of School Care	1	1	100.0%
Emerald Park Craft Group	1	1	100.0%
Emerald Park Play Group	1	1	100.0%
Country Women's Association of Western Australia Joondalup and District	1	1	100.0%
Edgewater Residents Association	1	1	100.0%
Other community members (engaged indirectly)	—	3	—
Total response rate (engaged directly)	329	27	8.2%

*Numbers may not add up to total, as respondents can represent more than 1 stakeholder type.

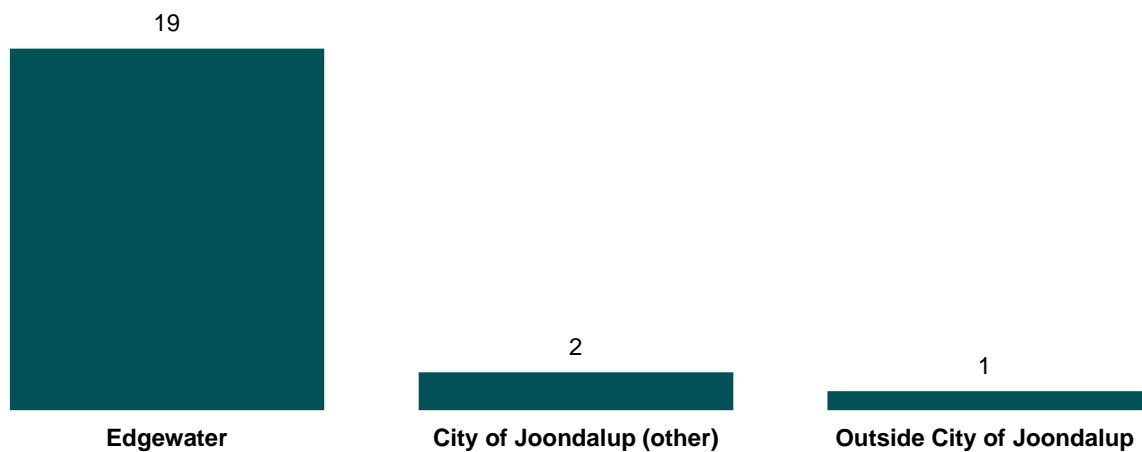
DEMOGRAPHICS

Respondent address

Respondents were asked to provide their contact address and the majority of respondents (21) are residents of the City of Joondalup, with 19 residing in the suburb of Edgewater. This data is shown in the table and chart below.

Responses received by suburb:	N	%
City of Joondalup	21	95.5%
Connolly	1	4.5%
Edgewater	19	86.4%
Greenwood	1	4.5%
Outside City of Joondalup	1	4.5%
Total responses (excluding park user and community groups)	22	100.0%

Responses received by suburb:

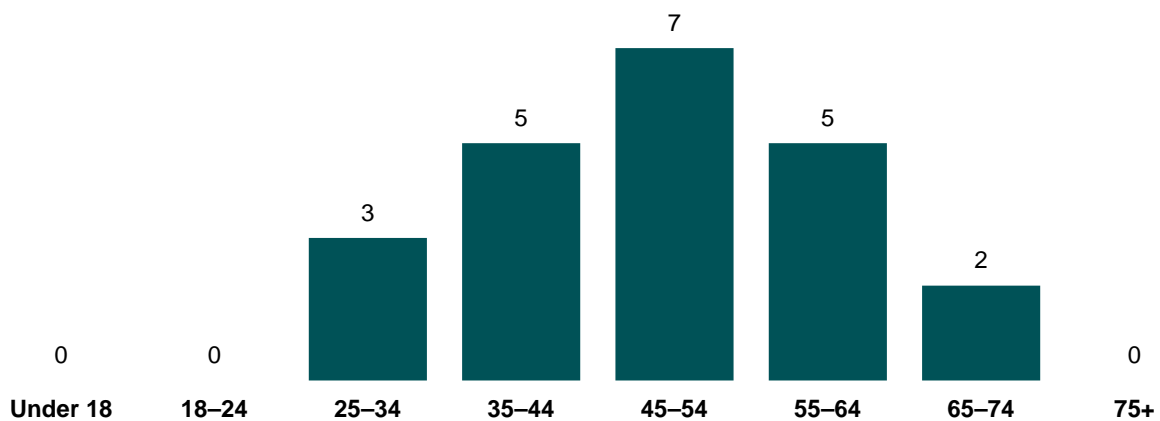


Respondent age

Respondents were asked to provide their age and over three-quarters are between the ages of 35–44 years (5), 45–54 years (7) and 55–64 years (5). This data is shown in the table and chart below.

Responses received by age:	N	%
Under 18 years	0	0.0%
18–24 years	0	0.0%
25–34 years	3	13.6%
35–44 years	5	22.7%
45–54 years	7	31.8%
55–64 years	5	22.7%
65–74 years	2	9.1%
75+ years	0	0.0%
Total responses (excluding park user and community groups)	22	100.0%

Responses received by age:



Respondent clubrooms/park usage type

Respondents were asked how they currently use Emerald Park Clubrooms with the following options:

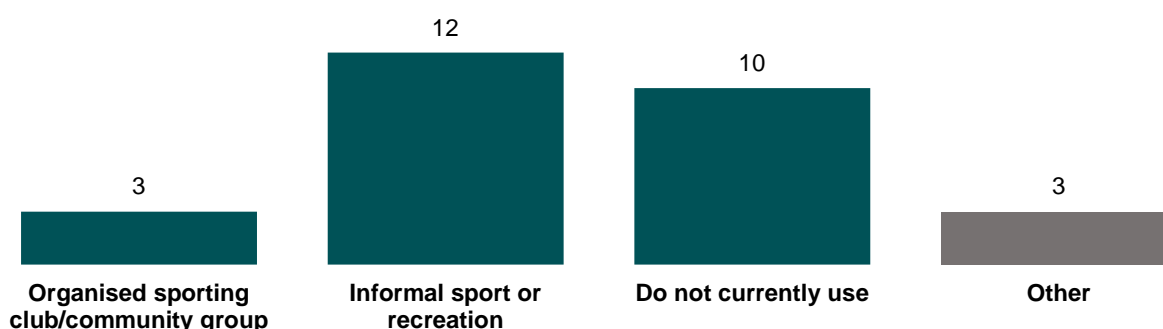
- As part of an organised sporting club or community group that hire the Clubrooms or the park
- Informal sport or recreation (eg dog walking, picnicking, children's play equipment, non-organised sport)
- I do not currently use Emerald Park Clubrooms, but I am interested in this project
- Other

A total of 3 respondents indicated that they currently use Emerald Park Clubrooms as part of an organised sporting club or community group. 12 respondents indicated that they use the clubrooms or park for informal sport or recreation, and 10 respondents indicated that they do not currently use the Clubrooms but are interested in the project. Of the 3 respondents who indicated "other", 1 respondent described a form of informal sport or recreation and 2 described after school care. This data is shown in the table and chart below.

Responses received by type of clubrooms or park use:	N*	%
As part of an organised sporting club or community group that hires the Clubrooms or the park	3	13.6%
Informal sport or recreation (eg dog walking, picnicking, children's play equipment, non-organised sport)	12	54.5%
I do not currently use Emerald Park Clubrooms, but I am interested in this project	10	45.5%
Other	3	13.6%
Total responses (excluding park user and community groups)	22	—

*Numbers may not add up to total, as respondents may select more than 1 option.

Responses received by type of clubrooms or park use:



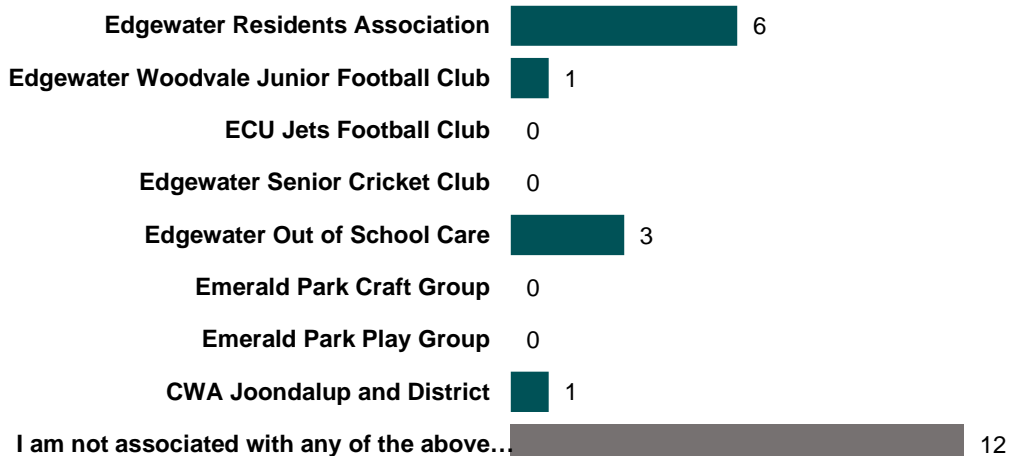
Respondent membership/affiliation to community and park user groups

Respondents were asked to identify whether they are a member of, or affiliated with, any of the Emerald Park user groups or the Edgewater Residents Association. A total of 11 respondents indicated that they are members of, or affiliated with, either the Edgewater Residents Association (6), the Edgewater Woodvale Junior Football Club (1), Edgewater Out of School Care (3) and/or Country Women's Association of Western Australia Joondalup and District (1). A further 12 respondents indicated that they are not associated with any of the clubs/groups listed. This data is shown in the table and chart below.

Responses received by membership/affiliation to community and park user groups:	N*	%
Edgewater Residents Association	6	27.3%
Edgewater Woodvale Junior Football Club	1	4.5%
ECU Jets Football Club	0	0.0%
Edgewater Senior Cricket Club	0	0.0%
Edgewater Out of School Care	3	13.6%
Emerald Park Craft Group	0	0.0%
Emerald Park Play Group	0	0.0%
Country Women's Association of Western Australia Joondalup and District	1	4.5%
I am not associated with any of the above clubs/groups	12	54.5%
Total responses (excluding park user and community groups)	22	—

*Numbers may not add up to total, as respondents may select more than 1 option.

Responses received by membership/affiliation to community and park user groups:



COMMENT FORM QUESTIONS

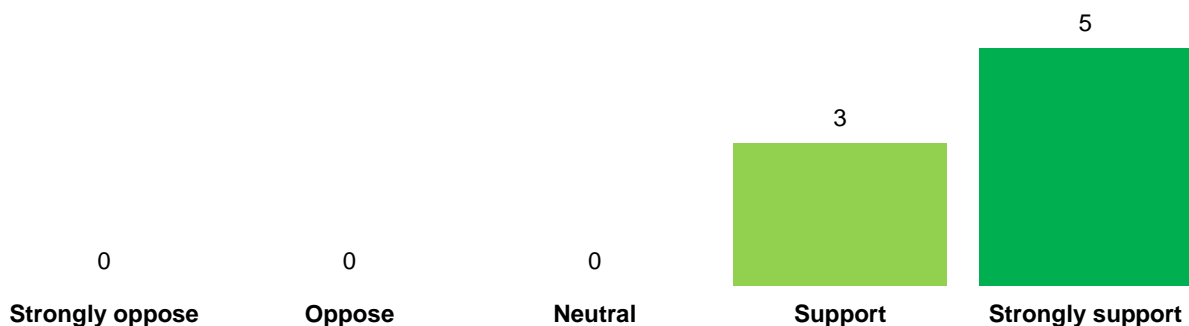
QUESTION: “The City is proposing to extend and refurbish Emerald Park Clubrooms, please indicate your level of support for this proposal”

Respondents were asked to indicate their level of support for the proposal to extend and refurbish Emerald Park Clubrooms on a 5-point scale from “strongly oppose” to “strongly support”. For the park user and community groups, all of these respondents indicated that they either “support” (3) or “strongly support” (5) the proposal. Similarly for other community members, the majority of these respondents indicated that they either “support” (7) or “strongly support” (13) the proposal. This data is shown in the table and chart below.

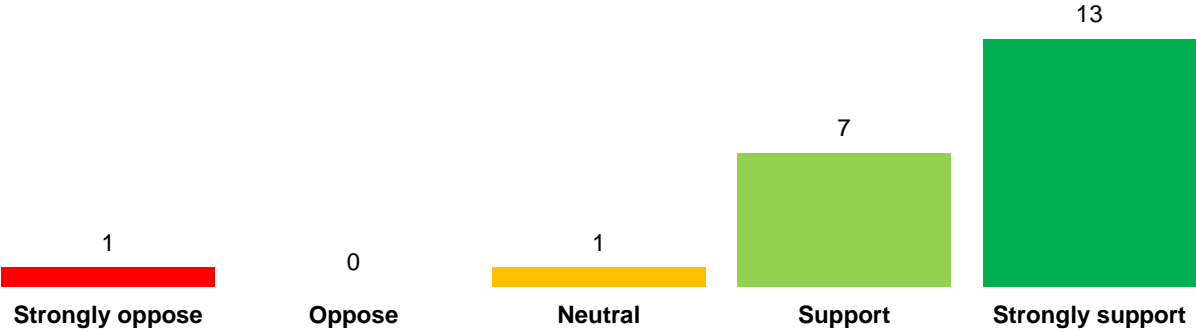
The City is proposing to extend and refurbish Emerald Park Clubrooms. Please indicate your level of support for this proposal:	N	%
Park user and community groups*:		
Strongly oppose	0	0.0%
Oppose	0	0.0%
Neutral	0	0.0%
Support	3	37.5%
Strongly support	5	62.5%
Total responses (park user and community groups)	8	100.0%
Other community members		
Strongly oppose	1	4.5%
Oppose	0	0.0%
Neutral	1	4.5%
Support	7	31.8%
Strongly support	13	59.1%
Total responses (excluding park user and community groups)	22	100.0%

*Includes Edgewater Woodvale Junior Football Club, ECU Jets Football Club, Edgewater Senior Cricket Club, Edgewater Out of School Care, Emerald Park Craft Group, Emerald Park Play Group, Country Women’s Association of Western Australia Joondalup and District and Edgewater Residents Association

The City is proposing to extend and refurbish Emerald Park Clubrooms. Please indicate your level of support for this proposal (park user and community groups):



The City is proposing to extend and refurbish Emerald Park Clubrooms. Please indicate your level of support for this proposal (excluding park user and community groups):



QUESTION: “Please tell us why you oppose the proposal”

Respondents who indicated that they “oppose” or “strongly oppose” the proposal to extend and refurbish the Emerald Park Clubrooms were asked to describe why. There was 1 respondent who indicated “strongly oppose” and this feedback is provided verbatim in the table below.

Verbatim responses* — Please tell us why you oppose the proposal (N = 1):
--

Heathridge Park should receive the upgrade. ECU already has facilities for senior footy at Windermere. Ocean Ridge Football Club should receive these funds at Heathridge Park.

*Note: Words that may identify respondents or contain offensive language have been removed and replaced with square brackets, ie [- - -]. Minor alterations have been made to spelling/grammar to enhance readability.

QUESTION: “Do you have any (further) comments about the proposal?”

Respondents were asked if they had any (further) comments about the proposal to extend and refurbish Emerald Park Clubrooms. A total of 7 park user and community groups provided feedback, and an additional 14 other community members also provided feedback. Comments were varied in theme and have been briefly summarised below. Full comments are provided verbatim at Appendix 10–11.

Park user and community groups:

- General support for the proposal.
- Concern about works interrupting access to the Clubrooms, toilets and car park.
- Requests for additional park infrastructure or additional/alternative upgrades to the Clubrooms.

Other community members:

- General support for the proposal.
- Concerns about excessive noise in the evenings/increased usage.
- Requests for additional park infrastructure or additional/alternative upgrades to the Clubrooms.

APPENDIX 1 — Cover letter to local residents and ratepayers within a 200 metres radius of Emerald Park



Date: 8 March 2019
Enquiries: Leisure Planning
Phone: 9400 4090

Your Ref: 10531
Our Ref:

A Global City: Bold | Creative | Prosperous

John Citizen
Address Line 1
Address Line 2

Dear John Citizen

EMERALD PARK, EDGEWATER – PROPOSED CLUBROOMS REFURBISHMENT

The City of Joondalup is seeking community feedback on a proposal to extend and refurbish the clubrooms facility at Emerald Park, Edgewater including the toilet / change rooms.

The proposed works are in line with the City's standard facility fit-out specifications and include the following:

- extension and refurbishment of the existing change rooms
- construction of a new umpires' change room
- refurbishment and reconfiguration of the existing external toilets (to be accessed internally)
- construction of a new kitchen for the hall
- construction of additional storage for the hall
- construction of an external unisex accessible park toilet (automatically open from 6.00 am to 8.00 pm daily).

To provide feedback, please complete the online comment form available via the community consultation section of the City's website at joondalup.wa.gov.au. It is recommended that you read the enclosed frequently asked questions document prior to providing feedback.

For further information, or to request a hard copy comment form, please contact the City's Leisure Planning team on 9400 4090 or via email on info@joondalup.wa.gov.au.

SUBMISSIONS ACCEPTED: Friday 8 March 2019 to Friday 5 April 2019.

Yours sincerely

MIKE SMITH
Manager Leisure and Cultural Services

Attachment Frequently asked questions

APPENDIX 2 — Email to Community Engagement Network members residing in Edgewater

From: Consultation
Sent: Friday, 8 March 2019 4:28 PM
Subject: Community Engagement - Emerald Park Proposed Clubroom Refurbishment

Dear Community Engagement Network Members,

The City of Joondalup is seeking community feedback on a proposal to extend and refurbish the clubroom facility at Emerald Park, Edgewater. To provide feedback, please complete the [Online Comment Form](#).

The proposal includes a minor extension and refurbishment to reconfigure the internal layout of the facility to make it more functional. This includes:

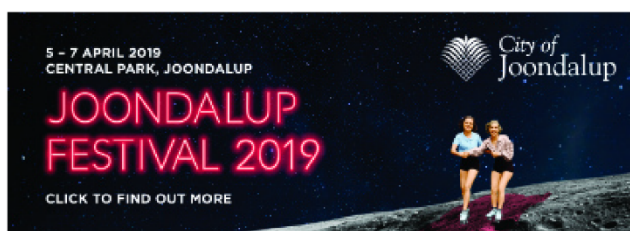
- Extension and refurbishment of the existing change rooms
- Construction of a new umpires' change room
- Refurbishment and reconfiguration of the existing external toilets (to be accessed internally)
- Construction of a new kitchen for the hall
- Construction of additional storage for the hall
- Construction of an external unisex accessible park toilet (automatically open from 6.00 am to 8.00 pm daily)

For further information, please review the [Frequently Asked Questions](#), or contact the City's **Leisure Planning Team** on 9400 4090 or via [email](#).

Submissions accepted: Friday 8 March 2019 to Friday 5 April 2019

Community Engagement Network
City of Joondalup

Tel: 08 9400 4000
Fax: 08 9300 1383
Email: consultation@joondalup.wa.gov.au



The information contained in this communication may be confidential or commercially sensitive. If you are not the intended recipient you must not copy this communication, disclose its contents to any other party, or take any action in reliance on it. Please delete and destroy all copies and immediately notify the sender on 9400 4000 or by reply email.

APPENDIX 3 — Email to park user and community groups

From: [REDACTED]
Sent: Friday, 8 March 2019 10:29 AM
Subject: Emerald Park, Edgewater - Proposed clubrooms refurbishment
Attachments: 10243 Community Consultation Emerald Park Clubroom FAQ.pdf; 10243 Community Consultation Emerald Park Clubroom FORM.pdf

Good Morning,

The City is currently seeking feedback on a proposal to extend and refurbish the clubrooms facility at Emerald Park, Edgewater including the toilet / change rooms.

As part of the consultation, we are seeking feedback from your sporting club / community group as you currently use the facility and / or the park. It is recommended you read the attached frequently asked questions document prior to completing the comment form.

The City is seeking one comment form that represents your clubs or groups feedback on the proposed refurbishment (only one form per club / group). It is suggested that you discuss the refurbishment with your committee or club members and ensure the response represents the views of the majority of the club / group.

Club / group members can also complete a comment form from their personal view as well.

While the comment form is available for completion online, to ensure the City can identify the club's / group's specific feedback, you are asked to complete the attached comment form in hard copy and either email back or post to: PO Box 21, Joondalup, WA 6919.

You will also receive a hard copy of the consultation documents in the mail in the next few days.

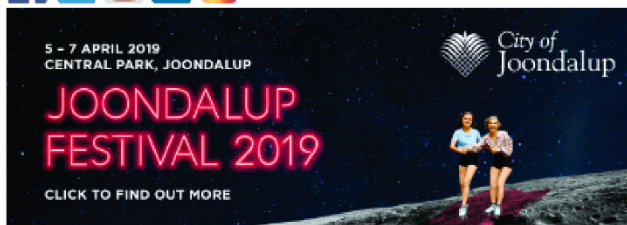
Consultation will be open from **Friday 8 March 2019 to Friday 5 April 2019.**

If you have any questions, please do not hesitate to contact me.

Regards

[REDACTED]
Leisure Planning Projects Officer
City of Joondalup

[REDACTED]
Follow:



Emerald Park, Edgewater – proposed clubrooms refurbishment

Frequently Asked Questions

What is the purpose of the community engagement?

To seek community feedback on a proposal to extend and refurbish the existing clubrooms facility at Emerald Park, Edgewater.

Why is the City proposing to refurbish the clubrooms at Emerald Park?

The existing clubrooms consists of a hall, kitchen, meeting room and playgroup room, toilets (accessed externally only), two change rooms and storage. The clubrooms are currently hired by four community groups and two sporting clubs.

The current size, condition and layout of the toilets, change rooms and storage is considered inadequate to service the current and future needs of these groups as well as the needs of the wider community.

The proposed refurbishment could accommodate a senior community level AFL club to be based at the clubrooms and the park in the winter months.

What works are being proposed as part of the refurbishment?

The proposed refurbishment includes the following works:

- extension and refurbishment of the existing change rooms
- construction of a new umpires' change room
- refurbishment and reconfiguration of the existing external toilets (to be accessed internally)
- construction of a new kitchen for the hall
- construction of additional storage for the hall
- construction of an external unisex accessible park toilet.

Other minor works proposed include:

- replacement of flooring in the hall
- replacement of windows and doors in the hall
- new security screens in the hall
- rendering and painting of the exterior of the clubrooms.

During the construction works, temporary facilities, including a meeting room and toilets would be provided for existing user groups. An external unisex accessible park toilet would be provided for the wider community that use the park. The proposed location for these temporary facilities is shown on the site plan.

What works are not proposed as part of the refurbishment?

It is not proposed to do any works in the playgroup room or the meeting room. Other infrastructure at the park e.g. playground, path networks, park benches or sports floodlighting are not being considered as part of the project.

Will the hall and toilets be available during the works?

No, the existing hall, male and female toilets would not be available during the works to ensure the health and safety of staff, user groups and the general community.

A temporary external unisex accessible park toilet would be available for use by the community, as indicated in the temporary facilities area on the site plan.

Some community groups that currently hire the hall would be relocated to nearby facilities. Hirers of the playgroup room will not be impacted by the works.

Will any trees or vegetation be removed as part of the project?

No. The proposed works will not impact on any of the existing trees or vegetation at the site.

Will I still be able to use the park for informal recreation activities (such as walking, jogging, dog walking etc.)?

Yes. Access to the park itself will not be affected by the works.

As public open space, the area would continue to be accessible to the local community. As is the case currently, when sport is being played at the park, informal recreation activities can still be undertaken around the perimeter and in any space that is not booked.

Will the playground, tennis court or car park be impacted as part of the refurbishment?

Other infrastructure at the park are not being considered as part of the project.

However, during construction works access to the northern car park will be reduced to accommodate the temporary facilities and builders compound as shown on the site plan.

Will there be any changes to the existing sports floodlighting as part of the project?

No. It is not proposed to make any changes to the floodlighting as part of the refurbishment project.

However, the City is proposing to upgrade the sports floodlighting in 2020/21 with community consultation on this proposal to be conducted in mid 2019.

How will the refurbished facility and park be managed and how will it be used?

Similar to the existing facility, use of the refurbished clubrooms and the park will continue to be managed by the City and be available for hire by sporting clubs, schools, community groups and individuals. Bookings would continue to be managed in accordance with the City's existing hiring process. Not-for-profit community groups would be able to hire the facilities at a subsidised rate in accordance with the City's *Facility Hire Subsidy Policy*.

It is expected that the usage of the hall would increase as a result of a more functional layout and improved amenities. The additional usage is anticipated to occur during the day by local community groups due to the improved functionality, it is also anticipated that existing and new user group bookings will increase in the early evenings.

Who is being engaged on this project?

The City is directly engaging the following stakeholders:

- local residents within a 200 metre radius of Emerald Park
- representative from the Edgewater Residents Association
- representative from the current clubrooms and park user groups
- Community Engagement Network members residing in Edgewater.

In addition, all information about the proposed refurbishment is available on the City's website. Anyone interested in the proposal can complete the comment form with responses limited to one per person or group.

When is the engagement period open?

The community engagement period is open between **Friday 8 March 2019 – Friday 5 April 2019**.

What happens next?

The results of the community engagement will be collated and presented to Council seeking endorsement to progress to detailed design and construction.

The outcomes of this engagement will be available for viewing on the community consultation section of the City's website at joondalup.wa.gov.au

Who do I contact for more information on the proposal?

For further information please contact the City's Leisure Planning team on **9400 4090** or via email at info@joondalup.wa.gov.au

Emerald Park, Edgewater – proposed clubrooms refurbishment



Builders compound and temporary facilities (construction only)



Proposed facility extension areas

APPENDIX 5 — Hard-copy Comment Form (page 1)



Emerald Park, Edgewater – proposed clubrooms refurbishment Comment Form

The City of Joondalup is seeking community feedback on a proposal to extend and refurbish the Emerald Park Clubrooms, Edgewater. This comment form can be completed electronically via the Community Consultation section of the City's website at joondalup.wa.gov.au

It is recommended that you read the frequently asked questions document prior to providing feedback. If you have any questions about the proposal, please contact the City's Leisure Planning team on **9400 4090** or via email at info@joondalup.wa.gov.au

Submissions accepted: **Friday 8 March – Friday 5 April 2019.**

1. Your details

Please note that for your feedback to be validated, your contact details must be provided. This information will be treated as confidential and will not be published in any document or report on the outcome of the engagement. **Only one comment form per person will be accepted.**

Name:

Address:

Suburb:

Postcode:

Email:

I am aged:

☐ Under 18

☐ 18 – 24

☐ 25 – 34

☐ 35 – 44

☐ 45 – 54

☐ 55 – 64

☐ 65 – 74

☐ 75+

2. How do you currently use Emerald Park Clubrooms? (Please tick as many as applicable)

- ☐ As part of an organised sporting club or community group that hire the clubrooms or the park.
☐ Informal sport or recreation (eg dog walking, picnicking, children's play equipment, non-organised sport).
☐ I do not currently use Emerald Park Clubrooms, but I am interested in this project.
☐ Other (please describe):

**3. Are you (or is someone in your household) a member of, or affiliated with any of the following clubs/groups?
Please tick as many as applicable.**

- | | |
|--|---|
| <input type="checkbox"/> Edgewater Residents Association | <input type="checkbox"/> Edgewater Out of School Care |
| <input type="checkbox"/> Edgewater Woodvale Junior Football Club | <input type="checkbox"/> Emerald Park Craft Group |
| <input type="checkbox"/> ECU Jets Football Club | <input type="checkbox"/> Emerald Park Play Group |
| <input type="checkbox"/> Edgewater Senior Cricket Club | <input type="checkbox"/> I am not associated with any of the above clubs/groups |
| <input type="checkbox"/> Country Women's Association of Western Australia – Joondalup and District | |

4. The City is proposing to refurbish Emerald Park Clubrooms including the following works:

- extension and refurbishment of the existing change rooms
- construction of an umpires' change room
- refurbishment and reconfiguration of the existing external toilets (to be accessed internally)
- construction of a new kitchen for the hall
- construction of additional storage for the hall
- construction of an external unisex accessible park toilet.

Please indicate your level of support for this proposal by ticking the most appropriate box below.

- ☐ Strongly support
☐ Support
☐ Unsure
☐ Oppose
☐ Strongly oppose

5. If you oppose the proposal, please explain why.

6. Do you have any comments about the proposed works.

7. Request to be informed.

Community engagement assists Council in deliberating and then making decisions on certain matters. The analysis from this engagement will be provided to Council to assist them in their decision-making role first at a Briefing Session and then at a Council meeting. Deputations can be made at Briefing Sessions by appointment and questions and public statements can be presented at Council meetings.

- ☐ I would like to be informed via email when this engagement will be presented at a Briefing Session and Council meeting. Please ensure your email address is provided in the 'your details' section above.


8. City of Joondalup Community Engagement Network.

The Community Engagement Network is a network of community members interested in being consulted and engaged on an ongoing basis about future strategic initiatives in the City of Joondalup. Contact details are kept strictly confidential and members can opt-out at any time. If you are interested in joining the City of Joondalup Community Engagement Network, subscribe on the City's website at joondalup.wa.gov.au or tick the box below.

- ☐ I would like to join the City of Joondalup Community Engagement Network (please tick).

Thank you for your feedback.

APPENDIX 6 — Online Comment Form (page 1)



City of
Joondalup

Emerald Park, Edgewater — Proposed Clubroom Refurbishment

Comment Form

The City of Joondalup is seeking community feedback on a proposal to extend and refurbish the Emerald Park clubrooms in Edgewater.

It is recommended that you review the [Frequently Asked Questions](#) document prior to providing feedback. If you have any questions on the proposal, please contact the City's **Leisure Planning Team** on **9400 4090** or [email](#).

City of Joondalup | 90 Boas Avenue Joondalup WA 6027 | PO Box 21 Joondalup WA 6919
T: 9400 4000 F: 9300 1383 | joondalup.wa.gov.au | info@joondalup.wa.gov.au

Next



Emerald Park, Edgewater — Proposed Clubroom Refurbishment

Comment Form

*** Your contact details:**

Please note that for your feedback to be validated, your contact details must be provided. This information will be treated as confidential and will not be published in any document or report on the outcomes of the engagement. Only one Comment Form per person will be accepted.

Name:	<input type="text"/>
Address:	<input type="text"/>
Suburb:	<input type="text"/>
Postcode:	<input type="text"/>
Email:	<input type="text"/>

Your age:

How do you currently use Emerald Park Clubrooms? (Please select as many as applicable)

- ☐ As part of an organised sporting club or community group that hire the clubrooms or the park
- ☐ Informal sport or recreation (eg dog walking, picnicking, children's play equipment, non-organised sport)
- ☐ I do not currently use Emerald Park Clubrooms, but I am interested in this project
- ☐ Other (please describe)

(continued)

Are you (or is someone in your household) a member of, or affiliated with any of the following clubs/groups? (Please select as many as applicable)

- ☐ Edgewater Residents Association
- ☐ Edgewater Woodvale Junior Football Club
- ☐ ECU Jets Football Club
- ☐ Edgewater Senior Cricket Club
- ☐ Edgewater Out of School Care
- ☐ Emerald Park Craft Group
- ☐ Emerald Park Play Group
- ☐ Country Women's Association of Western Australia – Joondalup and District
- ☐ I am not associated with any of the above clubs / groups

City of Joondalup | 90 Boas Avenue Joondalup WA 6027 | PO Box 21 Joondalup WA 6919
T: 9400 4000 F: 9300 1383 | joondalup.wa.gov.au | info@joondalup.wa.gov.au

Prev

Next



Emerald Park, Edgewater — Proposed Clubroom Refurbishment

Comment Form

The City is proposing to refurbish Emerald Park Clubrooms including the following works:

- Extension and refurbishment of the existing change rooms
- Construction of an umpires' change room
- Refurbishment and reconfiguration of the existing external toilets (to be accessed internally)
- Construction of a new kitchen for the hall
- Construction of additional storage for the hall
- Construction of an external unisex accessible park toilet

Please indicate your level of support for this proposal by selecting the most appropriate box below.

Strongly oppose

Oppose

Neutral

Support

Strongly support


☐☐☐☐☐

City of Joondalup | 90 Boas Avenue Joondalup WA 6027 | PO Box 21 Joondalup WA 6919
T: 9400 4000 F: 9300 1383 | joondalup.wa.gov.au | info@joondalup.wa.gov.au

Prev

Next

(page 4 — respondents who answered “Please indicate your level of support for this proposal” with “Oppose” or “Strongly oppose”)



Emerald Park, Edgewater — Proposed Clubroom Refurbishment

Comment Form

Please tell us why you oppose the proposal?

Do you have any further comments about the proposed works?

Request to be informed:

Community engagement assists Council in deliberating and then making decisions on certain matters. The analysis from this engagement will be provided to Council to assist them in their decision-making role first at a Briefing Session and then at a Council meeting. Deputations can be made at Briefing Sessions by appointment and questions and public statements can be presented at Council meetings.

☐ I would like to be informed via email when this engagement will be presented at a Briefing Session and Council meeting

Email address:

City of Joondalup Community Engagement Network:

The Community Engagement Network is a network of community members interested in being consulted and engaged on an ongoing basis about future strategic initiatives in the City of Joondalup. Contact details are kept strictly confidential and members can opt-out at any time. If you are interested in joining the City of Joondalup Community Engagement Network, subscribe on the City's [website](#) or select the box below.

☐ I would like to join the City of Joondalup Community Engagement Network


Email address (if not entered above):

City of Joondalup | 90 Boas Avenue Joondalup WA 6027 | PO Box 21 Joondalup WA 6919
T: 9400 4000 F: 9300 1383 | joondalup.wa.gov.au | info@joondalup.wa.gov.au

Prev

Next

(page 4 — respondents who answered “Please indicate your level of support for this proposal” with “Strongly support”, “Support” or “Neutral”)



Emerald Park, Edgewater — Proposed Clubroom Refurbishment

Comment Form

Do you have any comments about the proposed works?

Request to be informed:

Community engagement assists Council in deliberating and then making decisions on certain matters. The analysis from this engagement will be provided to Council to assist them in their decision-making role first at a Briefing Session and then at a Council meeting. Deputations can be made at Briefing Sessions by appointment and questions and public statements can be presented at Council meetings.

☐ I would like to be informed via email when this engagement will be presented at a Briefing Session and Council meeting

Email address:

City of Joondalup Community Engagement Network:

The Community Engagement Network is a network of community members interested in being consulted and engaged on an ongoing basis about future strategic initiatives in the City of Joondalup. Contact details are kept strictly confidential and members can opt-out at any time. If you are interested in joining the City of Joondalup Community Engagement Network, subscribe on the City's [website](#) or select the box below.

☐ I would like to join the City of Joondalup Community Engagement Network


Email address (if not entered above):

City of Joondalup | 90 Boas Avenue Joondalup WA 6027 | PO Box 21 Joondalup WA 6919
T: 9400 4000 F: 9300 1383 | joondalup.wa.gov.au | info@joondalup.wa.gov.au

Prev

Next

(page 5)



City of
Joondalup

Emerald Park, Edgewater — Proposed Clubroom Refurbishment

Comment Form

Thank you for your feedback.

City of Joondalup | 90 Boas Avenue Joondalup WA 6027 | PO Box 21 Joondalup WA 6919
T: 9400 4000 F: 9300 1383 | joondalup.wa.gov.au | info@joondalup.wa.gov.au

Prev

Done

APPENDIX 7 — Community consultation webpage



[For Residents](#)[For Business](#)[For Visitors](#)



[Home](#) / [Organisation and Council](#) / [Community Consultation](#) / [Emerald Park, Edgewater – Proposed Clubroom Refurbishment](#)

Emerald Park, Edgewater – Proposed Clubroom Refurbishment

Categories: [Community Consultation](#)

Published on 08/03/2019

The City is seeking community feedback on a proposal to extend and refurbish the clubrooms facility at Emerald Park, Edgewater. The proposal includes a minor extension and refurbishment of the facility to reconfigure the internal layout of the facility to make it more functional. This includes:

- Extension and refurbishment of the existing change rooms
- Construction of a new umpires' change room
- Refurbishment and reconfiguration of the existing external toilets to be accessed internally
- Construction of a new kitchen
- Construction of additional storage
- Construction of a park universal access toilet (automatically open from 6.00 am to 8.00 pm daily)

Feedback on the proposed works can be made using the Online Comment Form. Alternatively, hard-copy comment forms are available on request via the contact details below.

[ONLINE COMMENT FORM](#)

For further information, please review the Frequently Asked Questions or contact the City's [Leisure Planning Team](#).

Submissions accepted: Friday 8 March 2019 to Friday 5 April 2019

Documents and Downloads

 [Frequently Asked Questions \(pdf 528 KB\)](#)

**Leisure Planning Project Officer**

9400 4090
info@joondalup.wa.gov.au

**Emerald Park Clubrooms**

[More info >](#)



Related Online Services

[Join the Community Engagement Network](#)

107918

31 | 37

APPENDIX 8 — Signage erected at Emerald Park



Emerald Park – proposed clubrooms refurbishment

The City of Joondalup is seeking community feedback on a proposal to extend and refurbish the existing clubrooms facility at Emerald Park, Edgewater.

For further information on this project, or to provide feedback, please visit the Community Consultation section of the City's website at joondalup.wa.gov.au or contact the City's Leisure Planning team on 9400 4090.

Consultation closes **Friday 5 April 2019**.



APPENDIX 9 — Map showing locations of signage erected at Emerald Park



APPENDIX 10 — Verbatim responses (park user and community groups)

QUESTION: “Do you have any (further) comments about the proposal?”

Note: Words that may identify respondents or contain offensive language have been removed and replaced with square brackets, ie [- - -]. Minor alterations have been to spelling/grammar to enhance readability.

Verbatim responses — Do you have any comments about the proposal? (N = 7):
As discussed previously with [- - -], ECC requests that the new players and umpires changerooms be reconfigured to open onto/face Emerald Park. The current configuration facing the car park raises many issues, namely the ability of members of the public to access the change rooms unseen by players from the nearby car park and the lack of direct accessibility to Emerald Park itself. We hold immense concern at ECC that the very real potential for players equipment and personal belongings to be stolen by unseen thieves will discourage both our own players and away teams from using the fantastic new facility. We also feel that an ability to walk directly towards the ground from the change rooms would further encourage both cricket and other potential sporting teams using the facility to utilise these new rooms more readily. We appreciate that similar unseen access may be possible from the new hall way entry to be built beside our existing club bar, raising further potential security concerns. However, we would be able to easily lock this door to limit any additional risk. Having to supply home and away teams with keys to access their respective change rooms would create multiple logistical and security issues and would again discourage their maximum use. As such, we request that the COJ strongly consider this change which we believe having viewed the plans and discussed with [- - -] are not beyond the realms of possibility. If further clarity is required, please do not hesitate to get in touch.
We fully support the COJ in providing improved facilities at Emerald Park.
We are concerned that the works may interrupt the out-of-school care provider. Can as much as possible be done to limit any disruption to the essential service they provide to the residents of Edgewater?
We feel an internal toilet for adults is needed in the Playgroup Hall, as well as upgrade to existing toilets. The Playgroup Toy Room also requires a ceiling as it is a hazard to health with spider and vermin dropping onto it.
We require access to similar storage allocation that we currently have — small cage and 2 cupboards (stationery cupboard size). We would like to request one of the large cages in the proposed new community group store. We would like to thank the City for providing the facility with 4 of the tables on casters and would like to request that we have access to more of the same in the future.
Emerald Park Craft Inc use clubrooms every Thursday 9am–1pm. As an incorporated group we don't pay hire fees — we are seniors all over the age of 55. How long will we be relocated to the other premises? Wider doorways for facilitating tables in and out of store room. As seniors, we need tables with wheels for ease of use.

I am writing this response to the proposed refurbishment of the Emerald Park Clubrooms, Edgewater as the [- - -] of Edgewater Out of School Care on behalf of Educators and families from our EOSHC Community.

Edgewater OSHC is an approved child care service operating at Emerald Park since 1988 with 132 active families currently enrolled in Before School, After School and Vacation Care. We are approved to operate under the following legislation and guidance bodies in Western Australia:

- ECRU — Education and Care Regulatory Unit
- Education and Care National Law Act (2012)
- Education and Care National Regulations (last updated 1 July 2018) ACEQA — Australian Children's Education and Care Quality Authority
- National Quality Framework

Issues identified with the proposed refurbishment:

1. Inside area required

Legislation contained in these documents dictates the conditions and requirements to maintain an approved service. Our current approval is for 70 children. The updated National Regulations (July 2018) requires Edgewater OSHC to provide:

- 3.25 square meters/child inside space (previously 3.15 sqm)
- 7 square meters/child outside space (previously 9.3 sqm).

Both of these requirements are available at the current time as we have bookings in the playgroup/OSHC room and the main hall Mon–Fri, excluding public holidays, 51 weeks each year. Initial discussions indicate that the available inside space in the Main Hall will be reduced to at least 2/3 of the available space for the duration of the build. This would put us in breach of required indoor space. What will the dimensions of the main hall be during refurbishment and after refurbishment?

There is also discussion of a Meeting Room — will that be accessible to Edgewater OSHC during the entire refurbishment to increase inside space? What would be the dimensions of the available space in the meeting room?

Can the blocking-off the internal entrances of the storage cages and existing kitchen be done as the first stage, as there is already an external door where the existing cages are? This would allow the main hall to remain as is for a longer period causing less interruption for EOSHC.

2. Toilets

Concern has been expressed from Educators and families regarding children having to walk past the worksite to access temporary unisex toilets. Other concerns are for health, cleaning and hygiene for EOSHC educators, children, families, construction workers and members of the public. What dimensions will the temporary toilets be? How many stalls will be included?

Legislation also requires that children have access to suitable toilet facilities.

Other toileting concerns after completion of the refurbishment that there will only be 1 external unisex toilet on open lock available for park users.

3. Access procedures for temporary toilets and the meeting room

As noted above for access to temporary toilets, the site map for the meeting room show it near the car park and construction area so we question the safety for EOSHC Educators, children and families.

4. Car park access

Emerald car parks are already heavily used in the afternoons with EOSHC Educators' cars and buses, family cars, dog walkers, other community participants, sports (football, soccer, tennis, cricket) groups. How many bays will be available during the refurbishment? This impacts on all users with car park safety and potential vehicle damage.

5. Notification of service disruption

Advanced notification would be required for any disruption to services such as electricity, water, our telephone line and internet. Our primary concern is our telephone line running from Emerald Way through the main hall to the Playgroup/OSHC room where our required telephone and internet is located. We require uninterrupted connection to maintain children's bookings and electronic signing in and out to ensure families Child Care Subsidy entitlements are submitted and received to reduce the full cost of care for our families.

6. Approval of proposed plans by ECRU

To continue operating our OSHC service during refurbishment we would have to have the proposed plans approved in advance by ECRU. If they approve them, we can continue to operate under restrictions. If they do not, they can cancel or cease our approval to operate an outside school hours child care service.

7. Relocation of the main hall front door, alarm, lights, fans and air conditioner controls

This will have a huge impact on using the Main Hall during construction of this area. After 30 years we finally got air conditioning and heating in the Main Hall and now it will be disrupted during refurbishment.

8. Internal toilets

Finally. The only foreseeable problem is the internal access through the main hall. Will the people training on the oval be using the external access to these internal toilets during our booking times?

We currently have 2 unisex 4–6 year old internal toilets in the playgroup/OSHC room. These are purposely designed with a half wall for assistance as required by these younger children as required. Would there be a possibility to replace the existing external handle with a key opening handle — key on the outside, hand turn lock on the inside to allow older children and educators to use them with privacy. 2 toilets are still under regulation requirements as more toilets are required for the number of children and educators, but this could appease concern from parents not wanting their children to use the temporary portable toilets.

9. Facility hire fees and food service inspections

Edgewater OSHC is a not for profit incorporated community organisation which pays facility hire fees to operate at Emerald Park. We also had to register with COJ for food handling permission which came with an application fee and 2 x annual inspection fees because we chop up fruit for afternoon tea.

Our EOSHC community enjoys and respects the use of Emerald Park as our home. We follow rules, requirements and legislation to enjoy and provide for the needs, safety, education, community spirit and availability for our families and children.

It is frustrating when our needs, requests and rights are overlooked and not considered for proposed and actioned refurbishment projects at Emerald Park clubrooms. We are not asked what we need to continue providing quality care and education to our EOSHC children and families.

10. Approval of the refurbishment

At this stage, we are very happy with the internal toilets, but would require further clarification on the impacts to our EOSHC community group including refurbishment operational time.

During the school terms we are not at the centre during school hours (8:30am–2:30pm), perhaps construction could be scheduled during these times?

We would also like to request that the new path being put in front of the new kitchen and changerooms be extended to the end of the veranda at the EOSHC entrance to the playgroup/OSHC room. The area between the veranda path and rubbish bins does not grow grass but a sandy muddy area, if the path was extended, children could use it for activities.

APPENDIX 11 — Verbatim responses (other community members)

QUESTION: “Do you have any (further) comments about the proposal?”

Note: Words that may identify respondents or contain offensive language have been removed and replaced with square brackets, ie [- - -]. Minor alterations have been to spelling/grammar to enhance readability.

Verbatim responses — Do you have any comments about the proposal? (N = 14):
As former [- - -] of [- - -] I was involved with a previous project to improve the facilities at the Emerald Park clubrooms. It is long overdue and essential for the continuing patronage of the clubs and societies that use the rooms.
Should be including adult play equipment in this project.
Cannot happen soon enough.
This will give additional facilities to the children in out of school care. My [- - -] has used the external toilets and been approached by a gentleman who claims to have been in the wrong toilet.
As a family who have resided [- - -] to the Emerald Park Clubrooms for over [- - -] years, and who have enjoyed utilising Emerald Park for [- - -] football, [- - -] cricket, dog walking and tennis, we support the refurbishment of the clubrooms for daytime/recreational/general community use. As a [- - -] who has resided nearby for over [- - -] years, we do not support the refurbishment if it means increased bookings for night time, social events. We have had many instances of having to make noise complaints due to excessive music and rowdy behaviour over the years, due to private functions at the clubrooms. This facility is extremely close to local residents and excessive noise impacts on everyone living nearby. Noise travels down and across the park and open doors and windows (during functions) exacerbates the problem. In general, we would like to voice our concerns about the Council's desire to increase the frequency of hire of the clubroom. If this was to happen, stricter noise control measures would need to be adhered to and enforced to ensure nearby residents could still enjoy peace and quiet in their homes at night time on weekends. If the refurbishment of the clubrooms resulted in more night time, social functions, we would be opposed to it, as it would undoubtedly impact our experience and enjoyment of our own home/suburb.
It would be wonderful to see these improvements and enjoy the benefits of the better facilities. Thank you.
In addition to the proposed works, it would be really good if floorings could be changed as well and walls could be painted to give a more appealing look to the clubroom in case the room was to be used for a function by community members. Currently most of COJ's community halls/clubrooms are very old looking and disappointing.
I would like to see a part of the extension for a small café to run its business here. There are no places in Edgewater for people to meet/discuss in a nice environment. The only cafes in Edgewater are in the commercial centre and it is not a nice/peaceful environment. It would help residents meet each other spontaneously and feel less suburban sleep/work type of suburb.
Upgrade sounds entirely reasonable.
Happy to support upgrades so long as any of the current users will not be displaced or disadvantaged.
I am happy with the proposal, in particular that there will be no damage to vegetation.
No, but way overdue.
Heathridge Park should receive the upgrade. ECU already has facilities for senior footy at Windermere. Ocean Ridge footy club should receive these funds at Heathridge Park. Not necessary. Already enough features.
I understand that the refurbishment will in no way affect current leisure activities such as walking the dogs, and as I'm all for promoting physical activity by our community I fully support the proposal.