

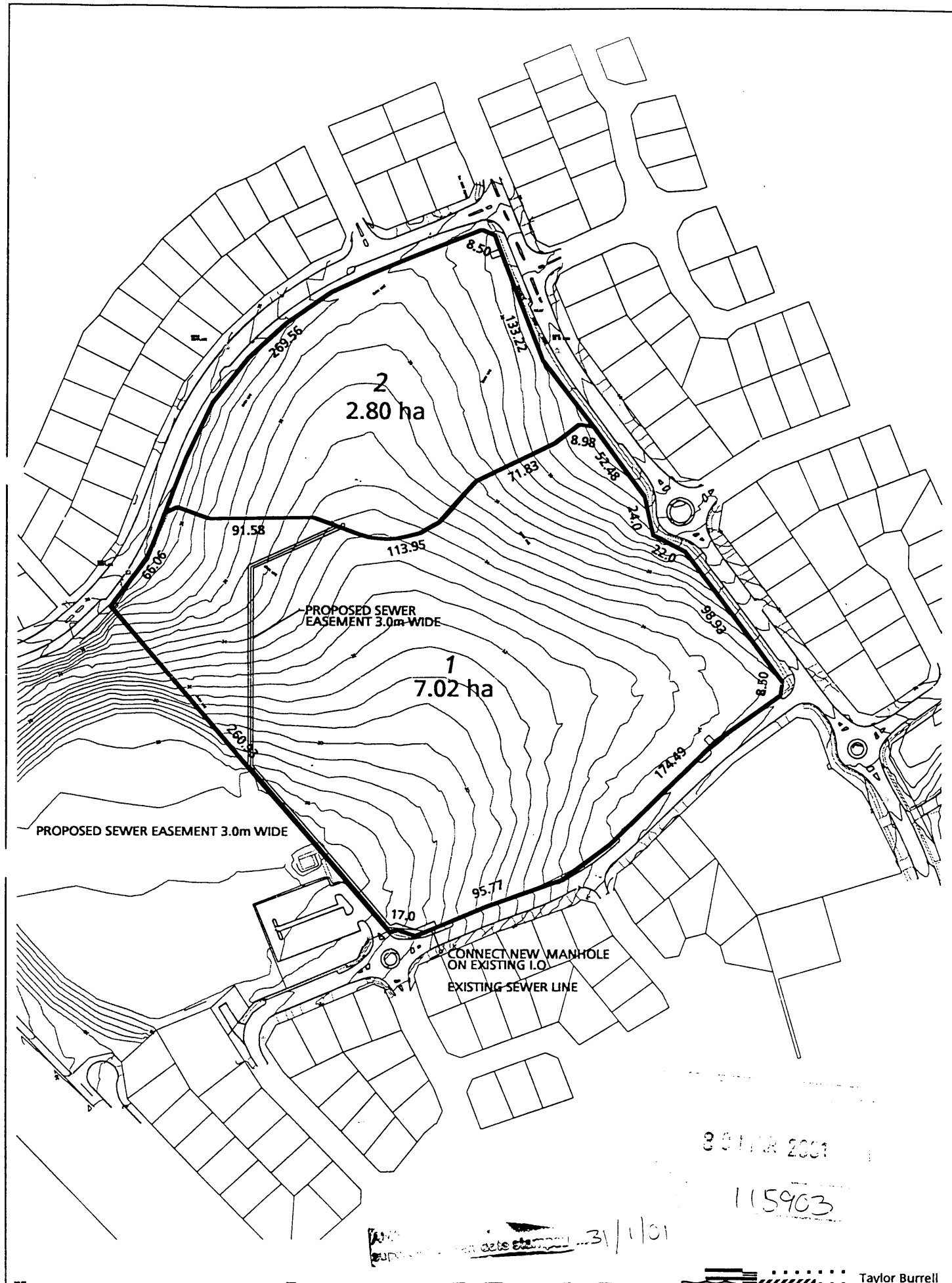


LOCALITY BOUNDARY

CITY OF JOONDALUP
LOCALITY SERIES
KINROSS

Scale 1 : 7000

SUBJECT
LAND



MODIFIED PLAN OF SUBDIVISION
PROPOSED MIDDLE SCHOOL SITE
PORTION OF PT. LOT 2
BURNS BEACH ROAD, KINROSS

PLT & CO

22/01/2001 774098

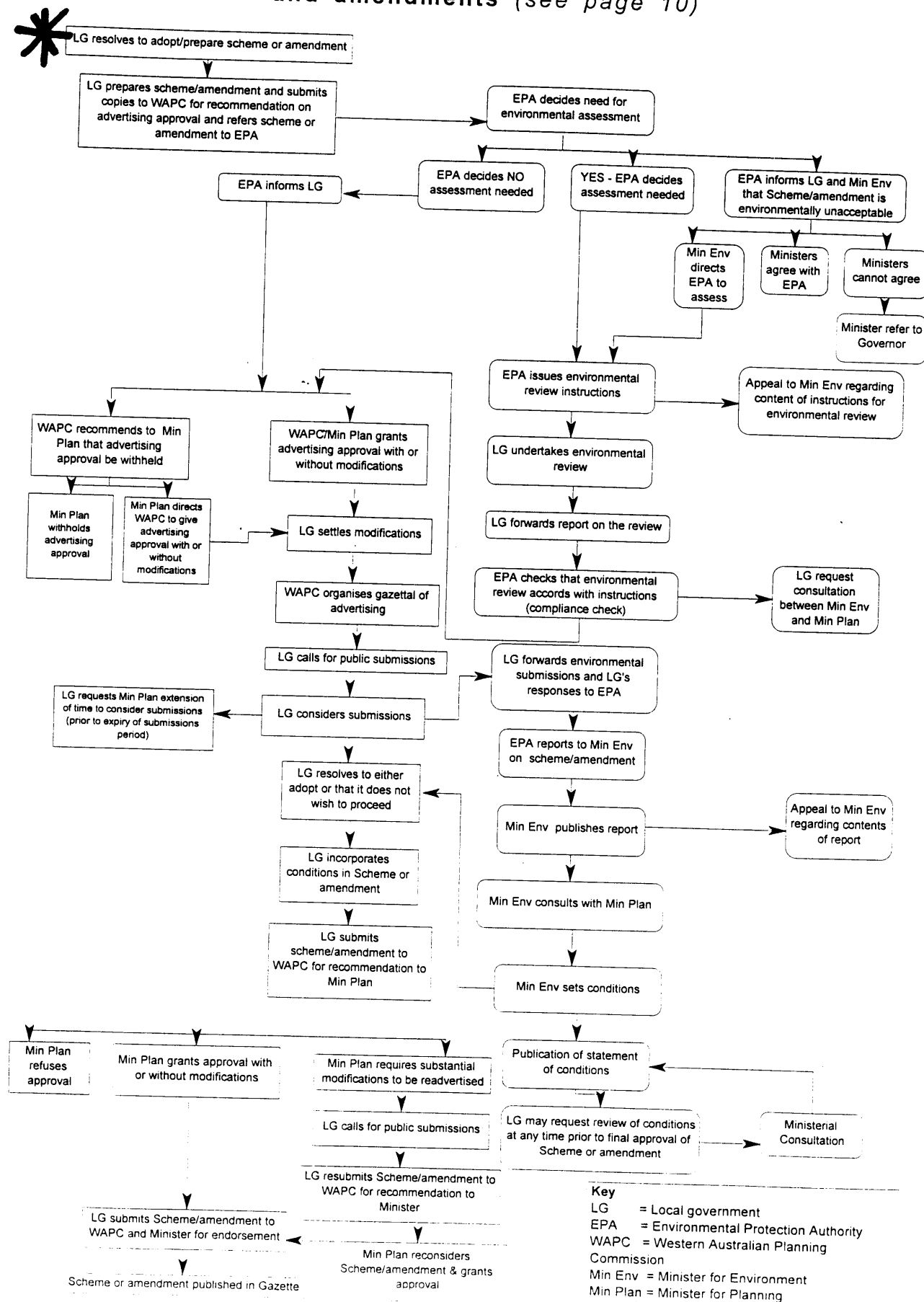
1:3000



Taylor Burrell

Survey planning and design
15/1 Roberts Road, Adelaide
PO Box 285, Mount North
Adelaide, Australia 5071
Telephone 08 821 2911
Facsimile 08 821 2911

4. Preparation and environmental assessment of local schemes and amendments (see page 10)



COPY NO

TOWN PLANNING AND DEVELOPMENT ACT, 1928 (AS AMENDED)

CITY OF JOONDALUP

DISTRICT PLANNING SCHEME NO 2 - AMENDMENT NO 8

The Council of the City of Joondalup under and by virtue of the powers conferred upon it in that behalf by the Town Planning and Development Act, 1928 (as amended), and the Metropolitan Region Town Planning Scheme Act, 1959 (as amended), hereby amends the above Town Planning Scheme by:

1. Rezoning a portion of a portion of Part Lot 2 (30) Dorian Loop, Kinross (Kinross High School site), from “Local Reserve – Public Use – High School” to “Residential” on the Scheme Maps.