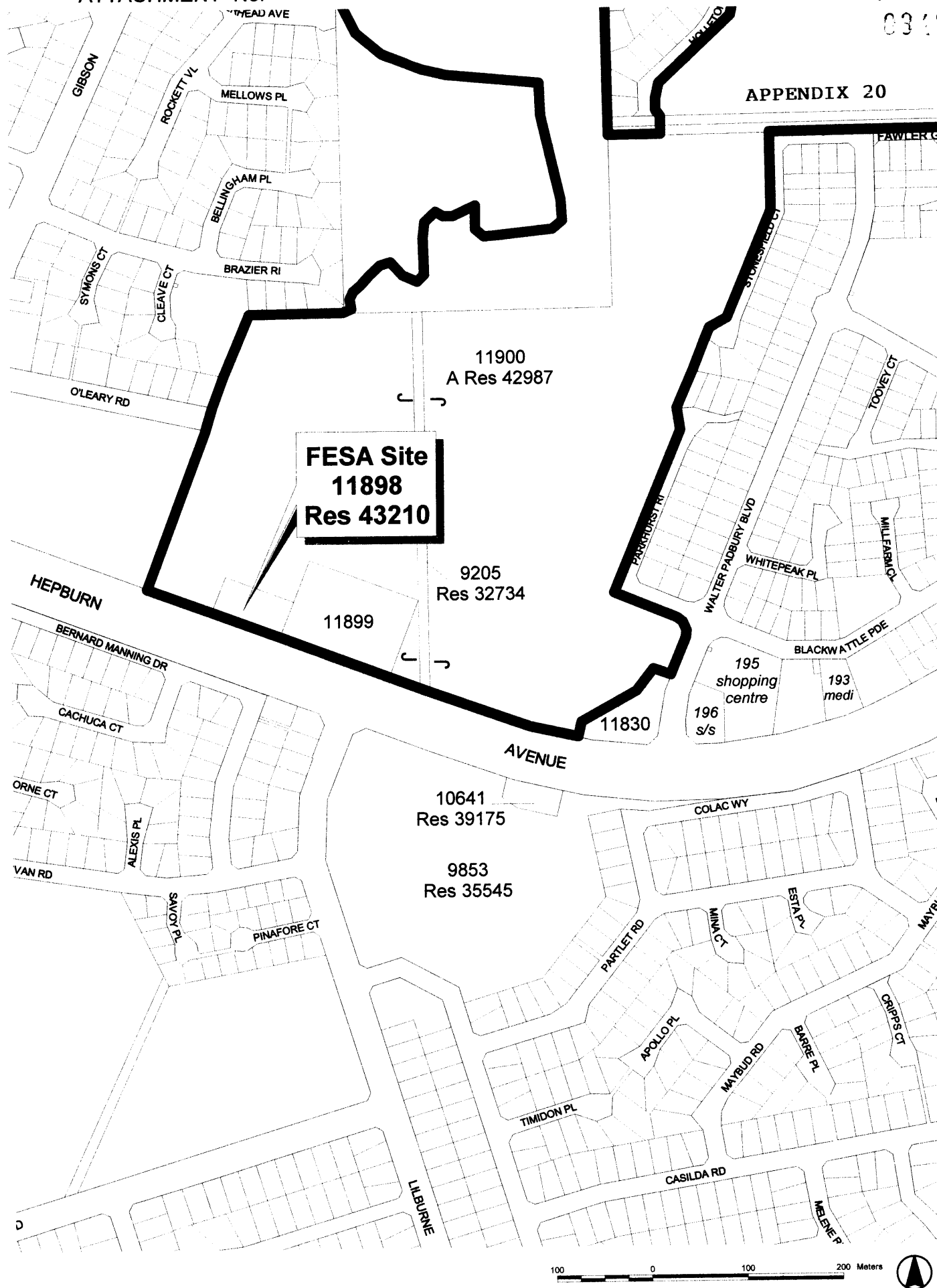


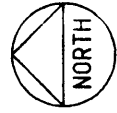
APPENDIX 20



**FESA Site
11898
Res 43210**

NUMBER OF PAGES
2 of 2

REFERRAL TO WABC
APPLICATION NO. 201/0650
DATE: 24/11/01



DOCUMENTATION BY:

SANDOVER JINDER
ARCHITECTS
202 Jackson Street, Sandover
Perth, Western Australia
Tel: (08) 9438 1100
Fax: (08) 9438 1101
www.sandoverjinder.com.au

JOB No. 0032

Scale of this Plan: 1:500

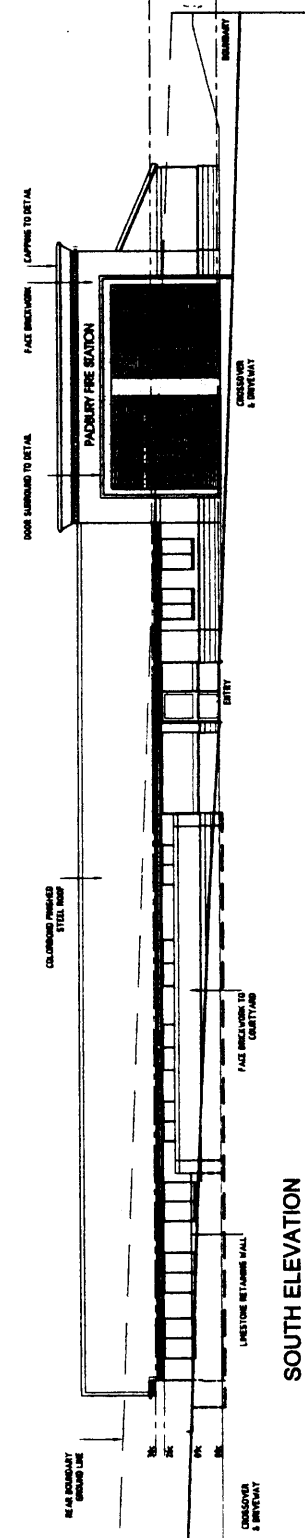
Department of Housing and Works
Government of Western Australia
ASSET MANAGEMENT SERVICES
1000 Hay Street, Perth, W.A. 6000
RHS 08 9438 3000 Fax 08 9438 3003

PADBURY FIRE STATION
LOT 1709 HERRON AVENUE

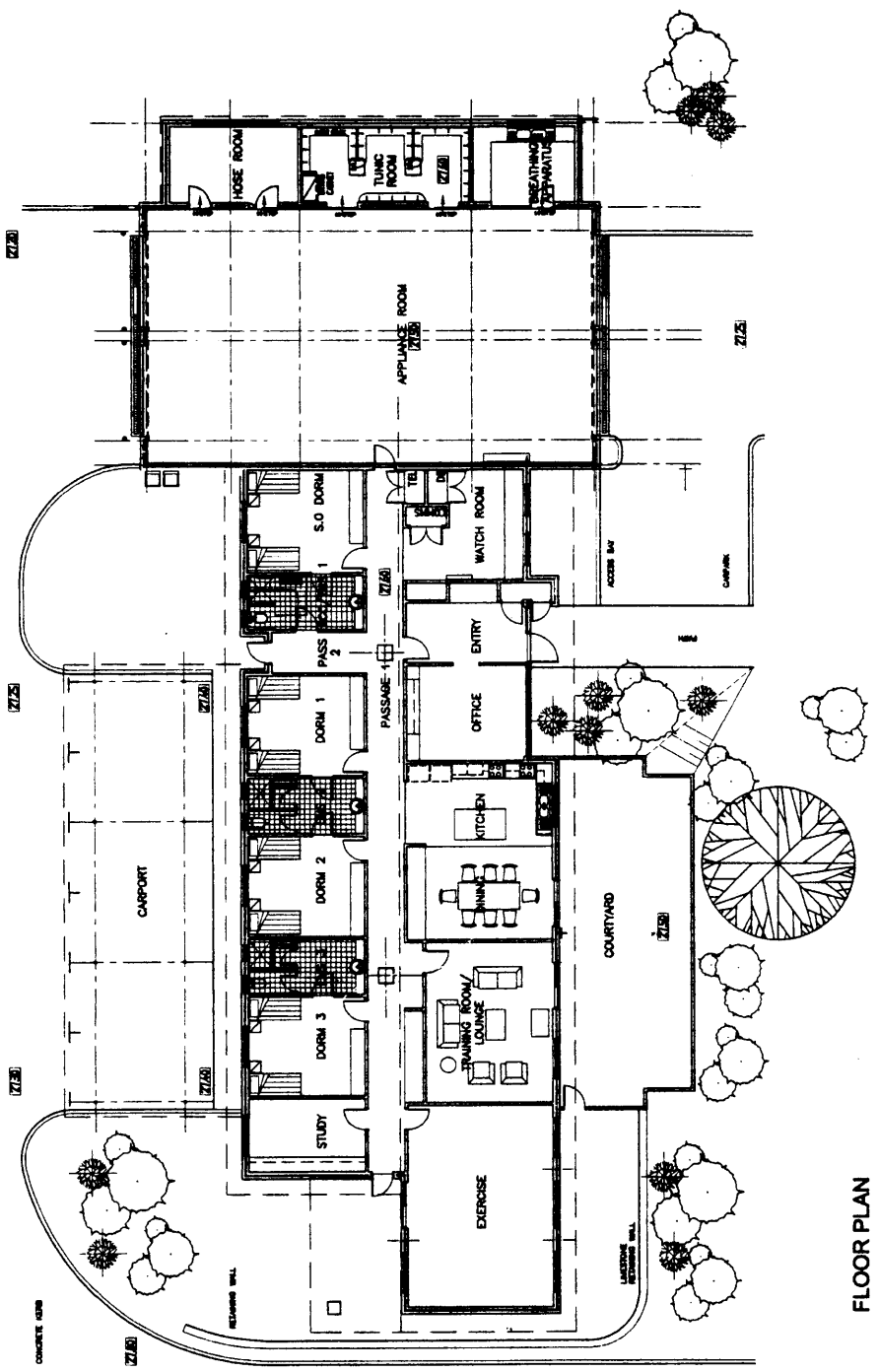
PLAN & ELEVATIONS

NO.	DATE	BY	CHKD.	REVISION
1				
2				
3				
4				
5				
6				
7				
8				
9				
10				

DA02



SOUTH ELEVATION



FLOOR PLAN