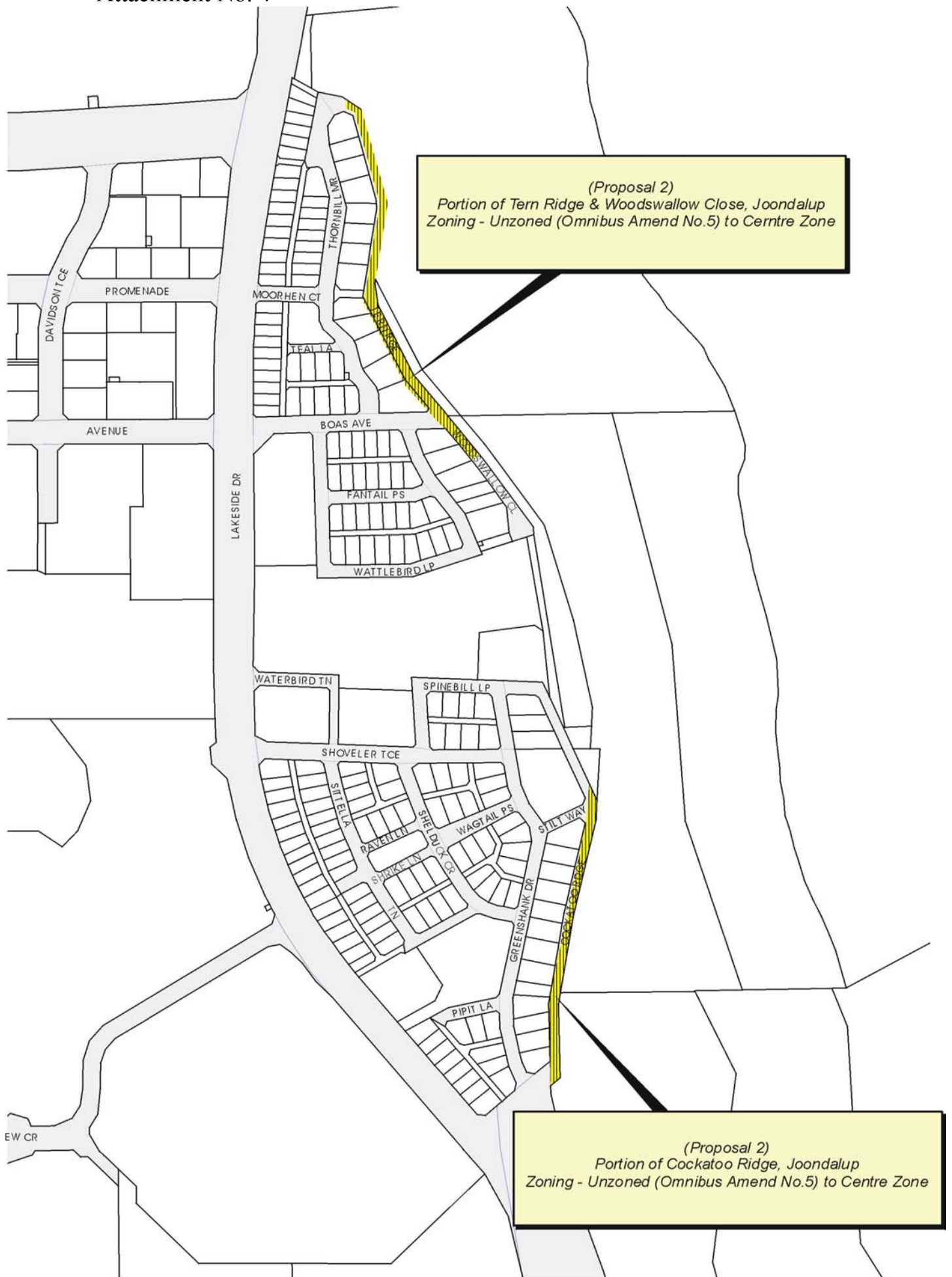


DPS2 - Amendment No.16

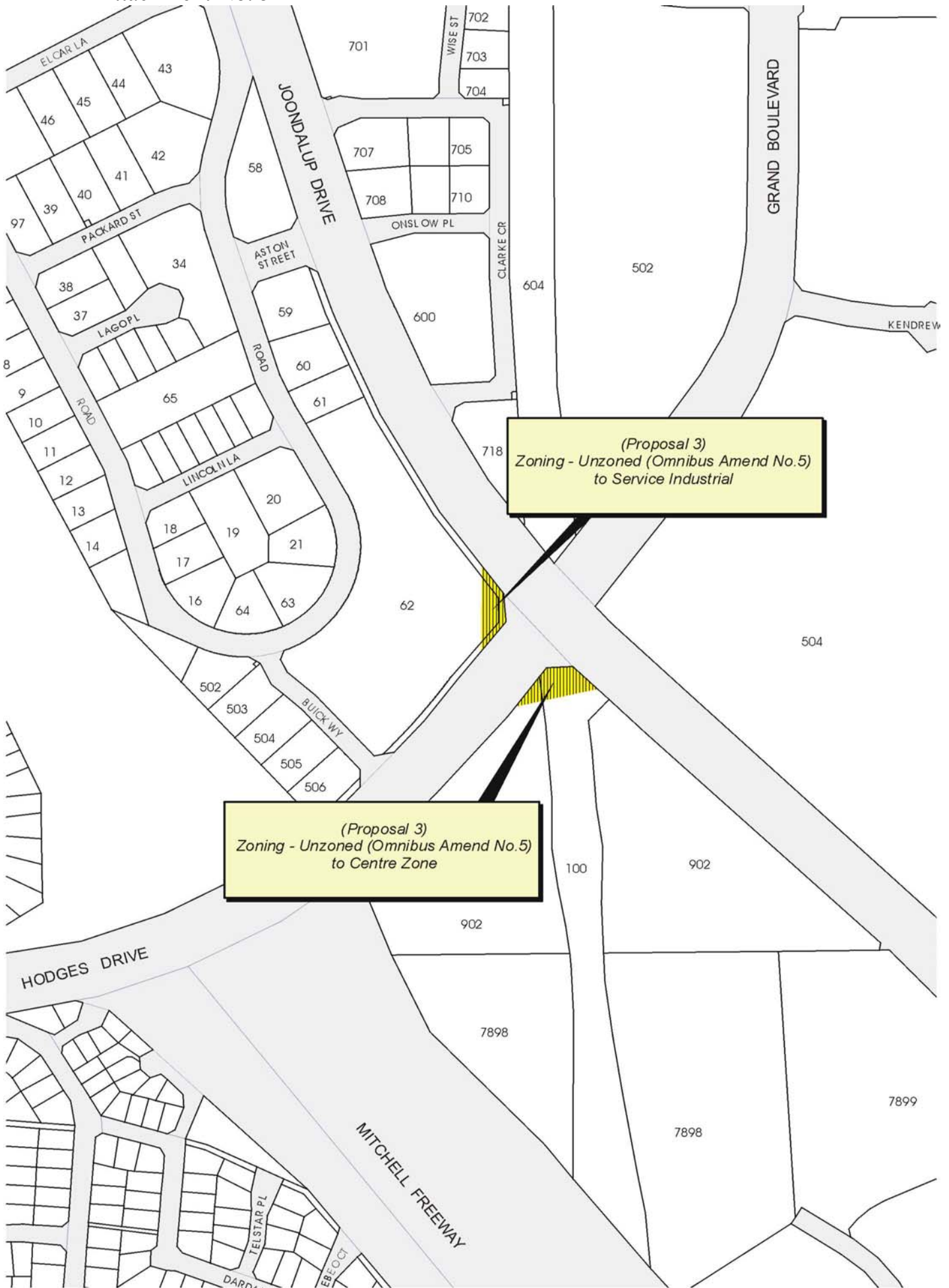
Prepared by City of Joondalup : Approvals, Planning and Environmental Services - Cartographic Section.

50 0 50 100 Meters





Attachment No. 5



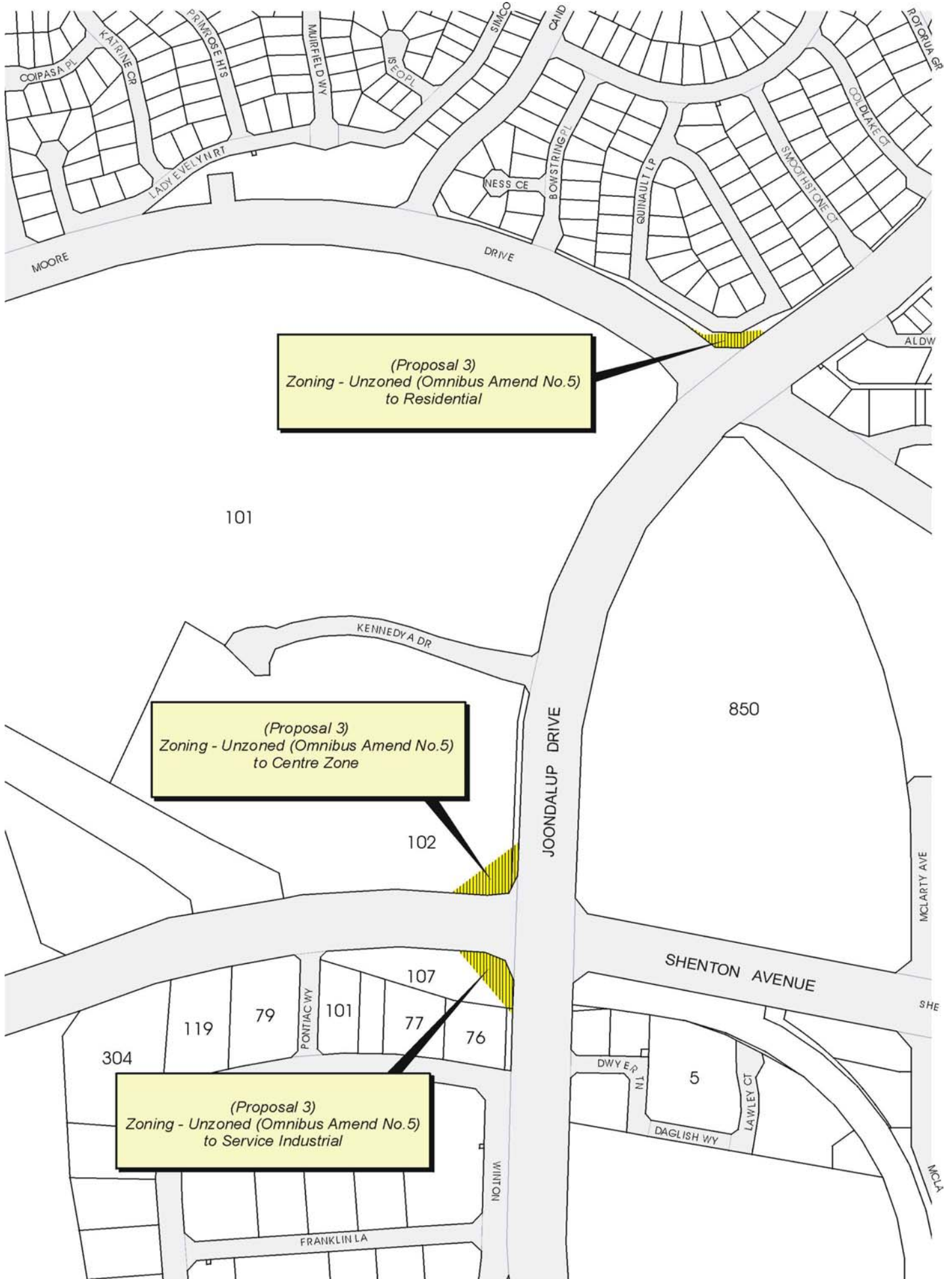
DPS2 - Amendment No.16

Prepared by City of Joondalup : Approvals, Planning and Environmental Services - Cartographic Section.

50 0 50 100 Meters



Attachment No. 6



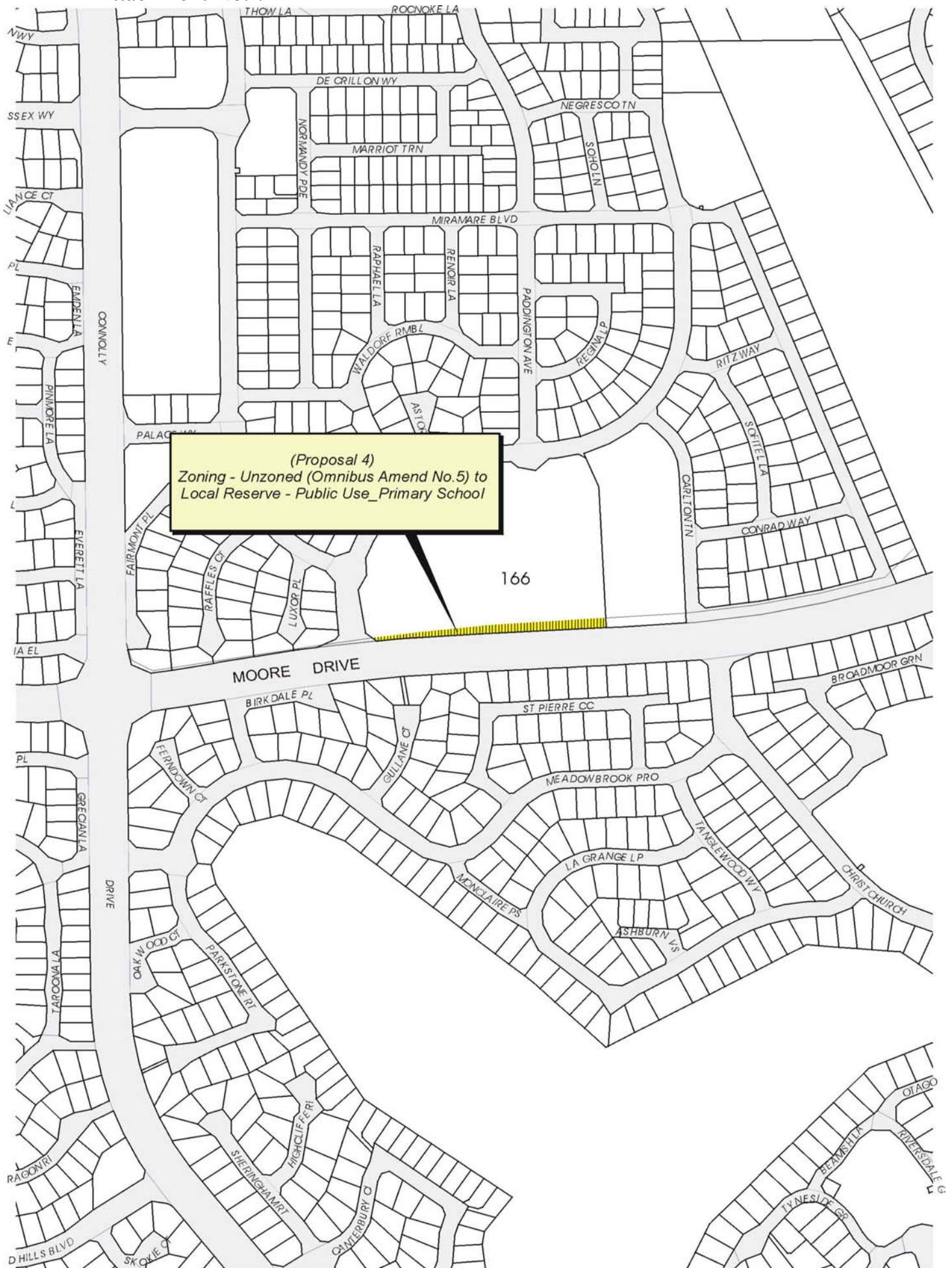
DPS2 - Amendment No.16

Prepared by City of Joondalup : Approvals, Planning and Environmental Services - Cartographic Section.

50 0 50 100 Meters



Attachment No. 7



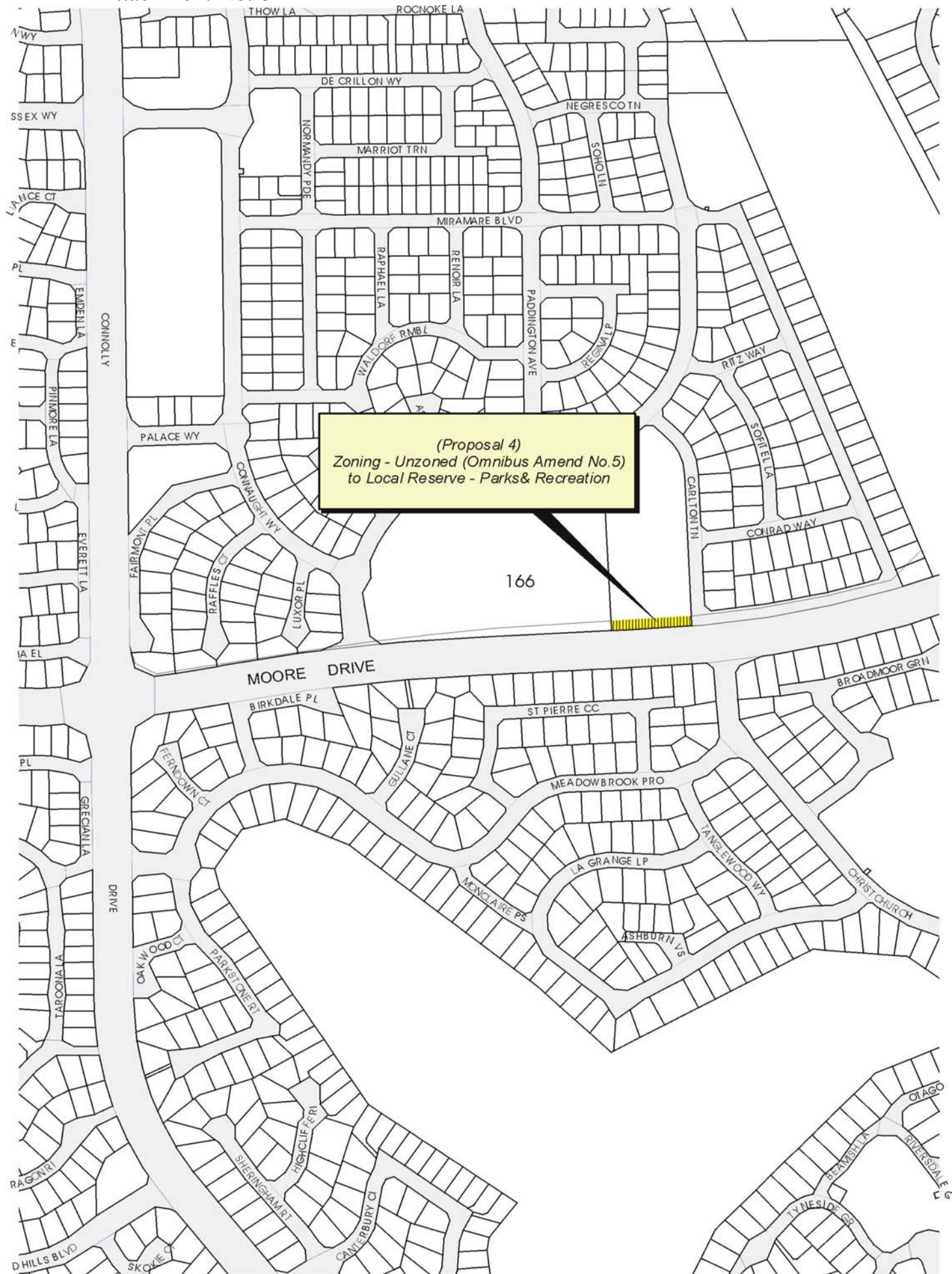
DPS2 - Amendment No.16

Prepared by City of Joondalup : Approvals, Planning and Environmental Services - Cartographic Section.

50 0 50 100 Meters



Attachment No. 8

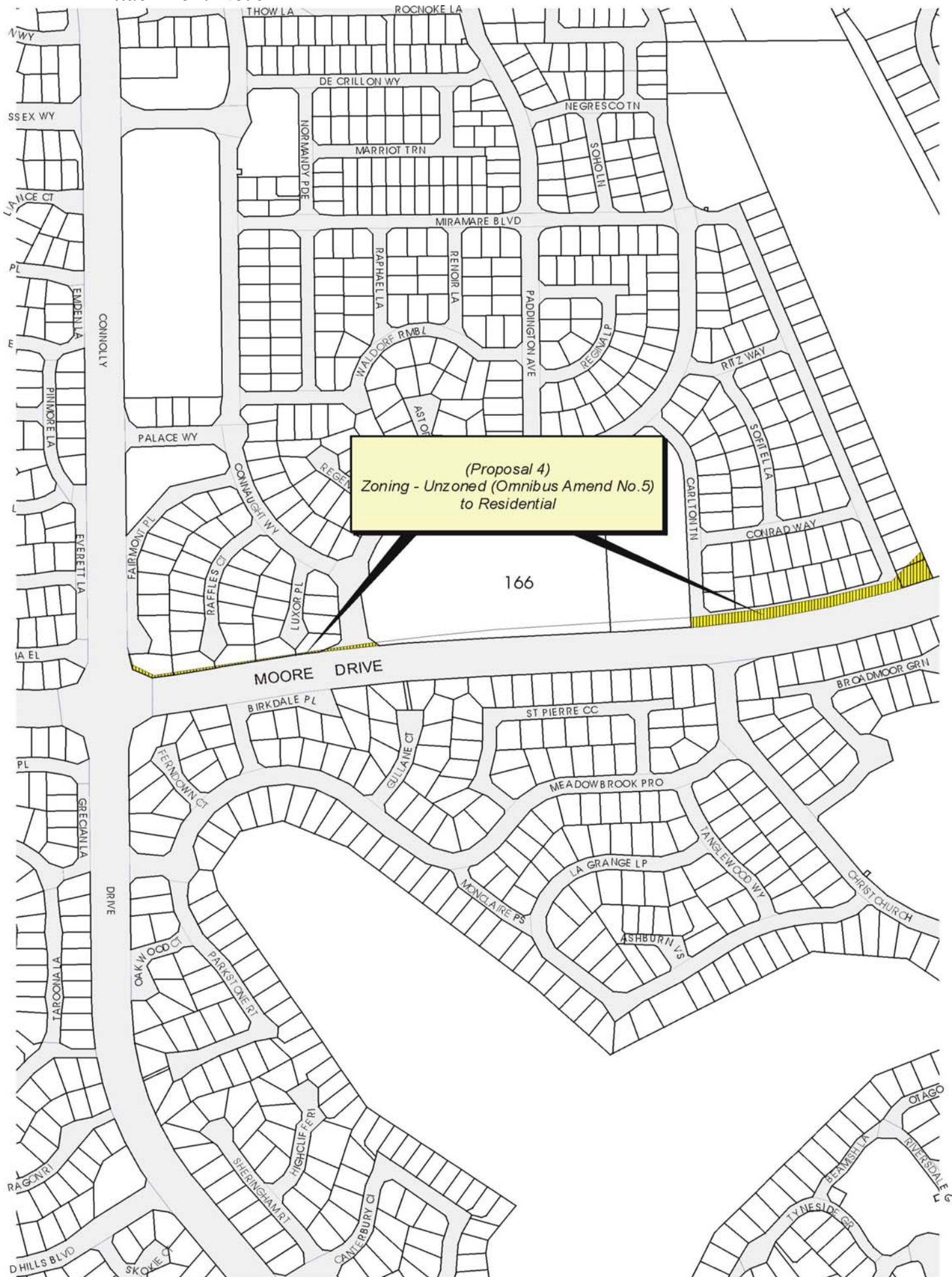


DPS 2 - Amendment No.16

Prepared by City of Joondalup : Approvals, Planning and Environmental Services - Cartographic Section.



Attachment No. 9



DPS 2 - Amendment No.16

Prepared by City of Joondalup : Approvals, Planning and Environmental Services - Cartographic Section.



