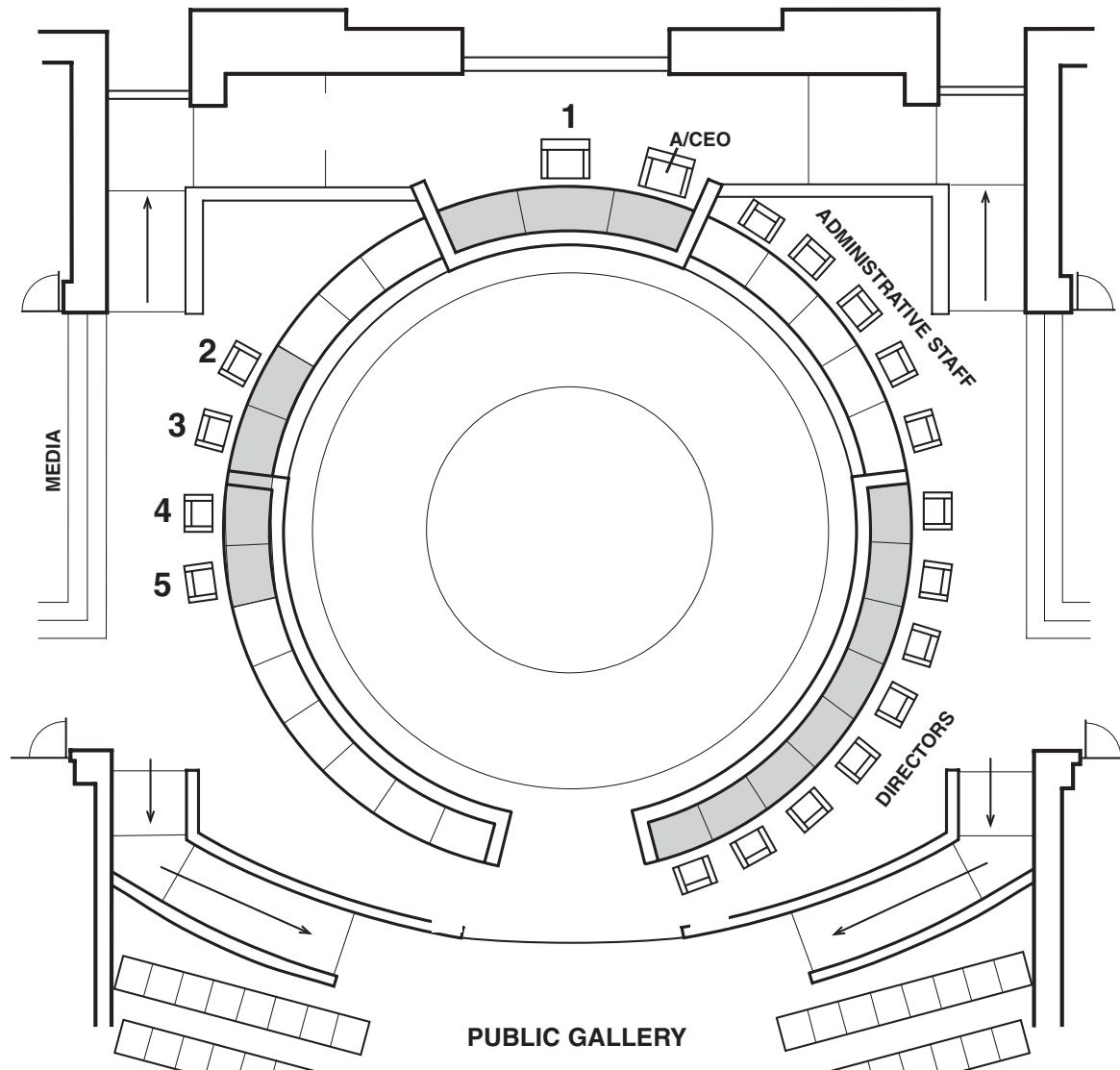


# Council Chamber Seating Diagram



1. CMR JOHN PATERSON  
Chairman
2. CMR ALLAN DRAKE-BROCKMAN  
Deputy Chairman
3. CMR STEVE SMITH
4. CMR MICHAEL ANDERSON
5. CMR ANNE FOX

Acting Chief Executive Officer - Clayton Higham  
 Director Corporate Services & Resource Management - Peter Schneider  
 Acting Director Planning & Community Development - Chris Terelinck  
 Director Infrastructure & Operations - David Djulbic