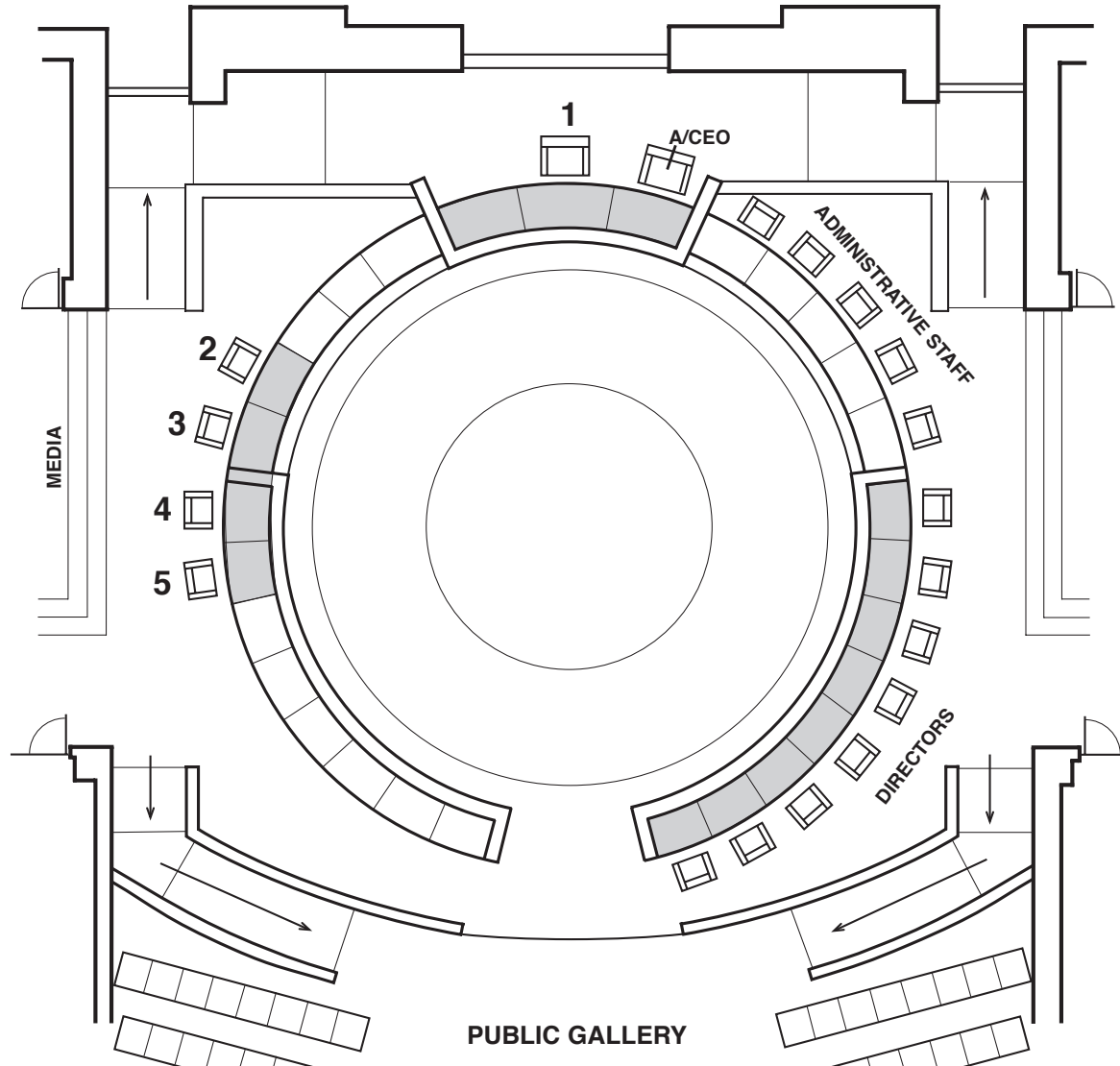


# Council Chamber Seating Diagram



1. CMR JOHN PATERSON  
Chairman
2. CMR PETER CLOUGH  
Deputy Chairman
3. CMR STEVE SMITH
4. CMR MICHAEL ANDERSON
5. CMR ANNE FOX

Acting Chief Executive Officer - Clayton Higham  
 Director Corporate Services & Resource Management - Peter Schneider  
 Acting Director Planning & Community Development - Graeme Hall  
 Director Infrastructure & Operations - David Djulbic