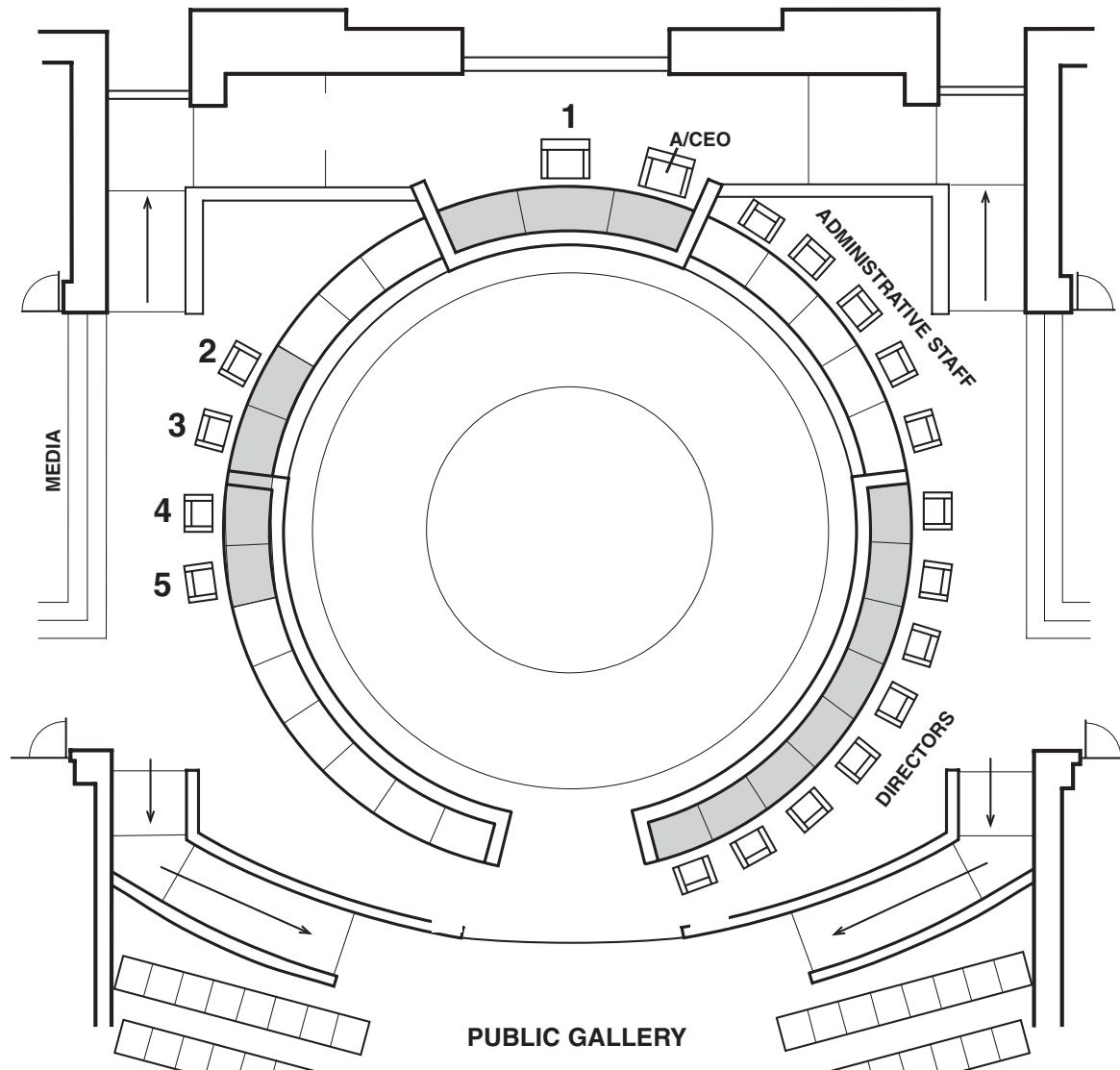


Council Chamber Seating Diagram



1. CMR JOHN PATERSON
Chairman
2. CMR PETER CLOUGH
Deputy Chairman
3. CMR MICHAEL ANDERSON
4. CMR ANNE FOX
5. CMR STEVE SMITH

Acting Chief Executive Officer - Clayton Higham
 Director Corporate Services & Resource Management - Peter Schneider
 Acting Director Planning & Community Development - Graeme Hall
 Director Infrastructure & Operations - David Djulbic