

(SMB Electrical Services)
Schedule of Rates 044-05/06 - Tom Simpson Park Lighting Upgrade

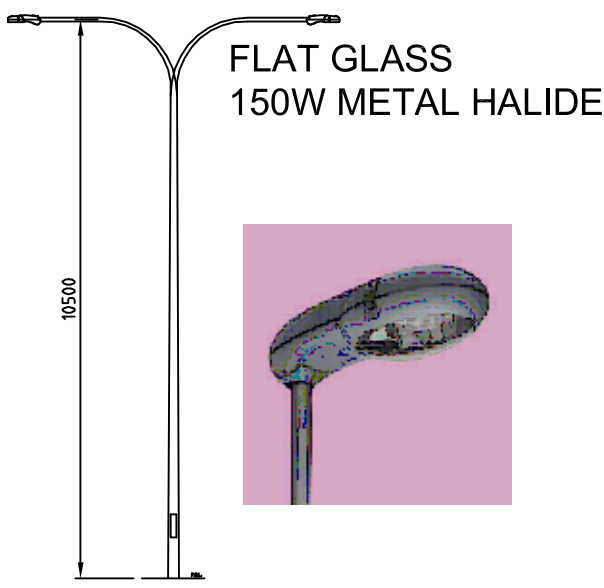
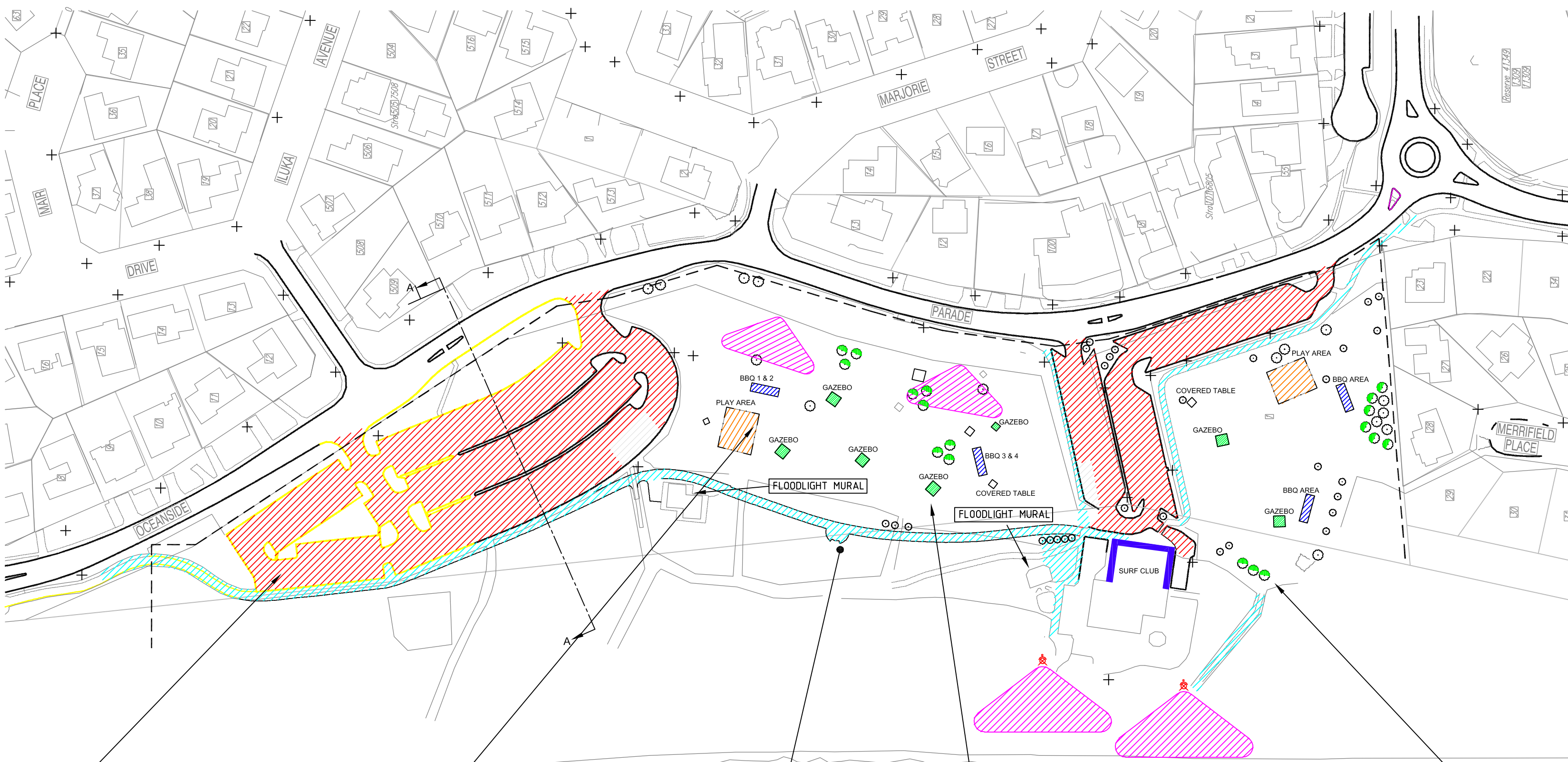
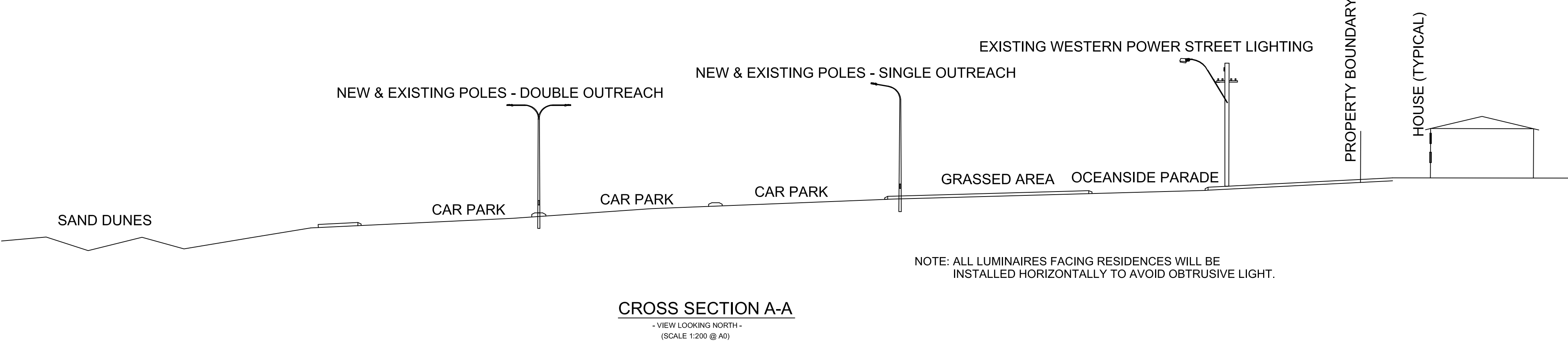
No.	Description	SMB Electrical Services U3/39 Winton Road JOONDALUP WA 6027 ABN: 96 218 644 198 Stephen Billins Phone: (08) 9301 1485 Fax: (08) 9301 1486 smbelec@bigpond.com		
		Total Exclusive of GST	GST	Total Inclusive of GST
1	Mobilisation and Site Establishment:	\$2,000.00	\$200.00	\$2,200.00
2	Traffic Management:	-	-	-
3	Electricity Supply:	-	-	-
4	Disconnection and Removal of Redundant Equipment:	\$2,000.00	\$200.00	\$2,200.00
5	Trenching and Backfilling and Directional Drilling:	\$28,000.00	\$2,800.00	\$30,800.00
6	Inspection, Testing & Commissioning:	\$500.00	\$50.00	\$550.00
7	Earthing:	\$675.00	\$67.50	\$742.50
8	Switchboards:	\$16,000.00	\$1,600.00	\$17,600.00
9	Relocation of Main Switchboard (Optional):	\$4,500.00	\$450.00	\$4,950.00
10	Cabling & Access:	\$12,000.00	\$1,200.00	\$13,200.00
11	Lighting Installation Including Installation of Luminaries:	\$45,000.00	\$4,500.00	\$49,500.00
12	Supply of Luminaries:	\$55,000.00	\$5,500.00	\$60,500.00
13	Supply of Light Poles:	\$42,000.00	\$4,200.00	\$46,200.00
14	Painting of Light Poles:	\$16,500.00	\$1,650.00	\$18,150.00
15	Installation of Light Poles Including Concrete Footings:	\$15,000.00	\$1,500.00	\$16,500.00
16	Manuals and "Record" Drawings:	\$1,200.00	\$120.00	\$1,320.00
17	Maintenance During the Defects Liability Period:	\$1,000.00	\$100.00	\$1,100.00
18	Sundries:	\$6,000.00	\$600.00	\$6,600.00
Revised Scope:		\$500.00	\$50.00	\$550.00
Total Tendered Contract Price:		\$247,875.00	\$24,787.50	\$272,662.50

(SMB Electrical Services)
Schedule of Rates 044-05/06 - Tom Simpson Park Lighting Upgrade

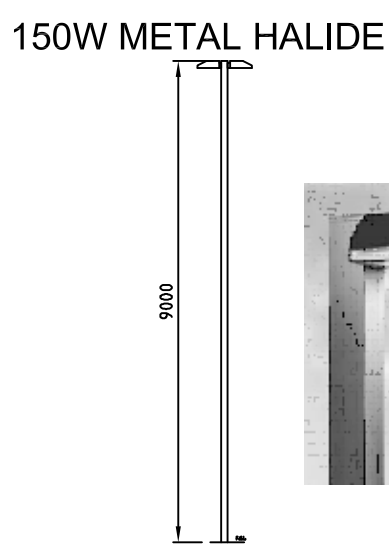
SCHEDULE OF VARIATIONS			
1) Labour (Normal Time)	Hourly Rate Exclusive of GST	GST	Hourly Rate Inclusive of GST
Contractor:	\$60.00	\$6.00	\$66.00
Trade Assistant:	\$30.00	\$3.00	\$33.00
Apprentice:	\$25.00	\$2.50	\$27.50
Labour:	-	-	-
2) Equipment	% Cost Exclusive of GST	GST	% Cost Inclusive of GST
Percentage cost mark up on invoice cost of materials:	9%	1.0%	10%
3) Transport	Per KM Exclusive of GST	GST	Per KM Inclusive of GST
Car Or Utility Vehicle (Up To 1 Tonne):	-	-	-
4) Excavation Trenching, for 600 mm Cable Depth, Including Danger Tape, Backfilling, Compaction and Reinstatement of Paving.	Rate Exclusive of GST	GST	Rate Inclusive of GST
Sand	\$20.00	\$2.00	\$22.00
Soft Rock	\$40.00	\$4.00	\$44.00
Hard Rock	\$160.00	\$16.00	\$176.00
5) Pole	Rate Exclusive of GST	GST	Rate Inclusive of GST
Casting of Footing:	\$500.00	\$50.00	\$550.00
Assembly and Erection:	\$300.00	\$30.00	\$330.00
Luminaire Installation with Pole Wiring:	\$100.00	\$10.00	\$110.00
Supply on Additional Pole (with Rag Bolt Assembly):	\$2,000.00	\$200.00	\$2,200.00
6) Horizontal Thrust Bore Under Road	Per Metre Exclusive of GST	GST	Per Metre Inclusive of GST
For 5m to 10m:	\$85.00	\$8.50	\$93.50
For 10m to 20m:	-	-	-

TOM SIMPSON PARK

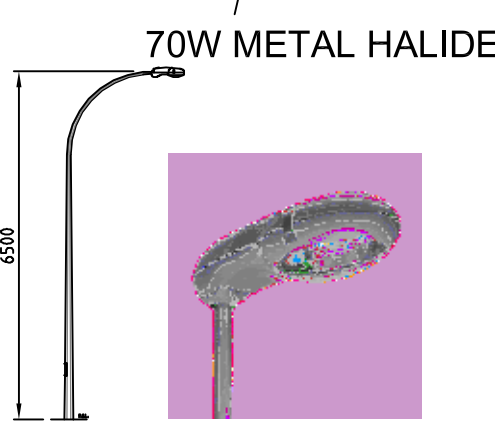
PROPOSED LIGHTING UPGRADE



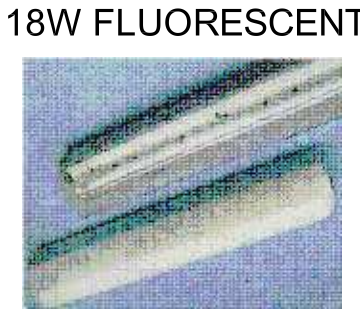
CAR PARK LIGHTING
10.5 METRE POLE WITH A
2.5 METRE OUTREACH
(SCALE 1:100 @ A0)



PLAYGROUND & BBQ LIGHTING
ON A 9 METRE POLE
(SCALE 1:100 @ A0)



PATHWAY LIGHTING
6.5 METRE POLE WITH 1.5 METRE OUTREACH
(SCALE 1:100 @ A0)



GAZEBO LIGHTING
MOUNTED TO GAZEBO ROOF
(TYPICAL FOR ALL GAZEBOS)



SURF CLUB WALL



FLOOD LIGHTING
4 METRE POLE
(SCALE 1:100 @ A0)

- LEGEND**
- | | | | |
|-----------------------|-----------------------------|--------------------|-----------------|
| PATH LIGHTING | BBQ LIGHTING | TREE UPLIGHTING | SCHEME BOUNDARY |
| CAR PARK LIGHTING | GAZEBO LIGHTING | PLAY AREA LIGHTING | |
| DISABLED BAY LIGHTING | GENERAL PARK/BEACH LIGHTING | SURF CLUB LIGHTING | |

Lighting Scheme Details

The City of Joondalup has approved funds in the 2005/06 Capital Works Budget for the installation of new and improved lighting on Tom Simpson Park, Mullaloo.

Curved poles and luminaires are used for carparking and pathways to match those curved elements on the park. Park lighting for Gazebos and BBQs uses squared off poles and luminaires to match the squared off structural and building elements.

Additional lighting is provided for the beach area, access paths to the toilets and wall murals. All luminaires will be environmental type fittings with no light emitted above the horizontal plane except for uplighting the trees.

Lighting Scheme Details (Cont'd)

Tree uplighting is intended to improve amenity and highlight the nature of the Norfolk Island Pines.

Lighting designed to Australian Standards where applicable or Industry practice.

Background Information from Aerial Photography 2002 supplemented by ground survey of Tom Simpson Park 2005.

The City welcomes your comment and feedback on the proposed scheme

For further information or comment please contact:
Mike Sage (Sage Consulting Engineers)

Email - info.msage@inet.net.au Tel: 9388 9745

The Lighting Scheme was designed by Sage Consulting Engineers.