



90 Boas Ave, Joondalup WA 6027
 PO Box 21, Joondalup WA 6919
 Ph: 08 9400 4000
 Fax: 08 9300 1383
 info@joondalup.wa.gov.au
 www.joondalup.wa.gov.au

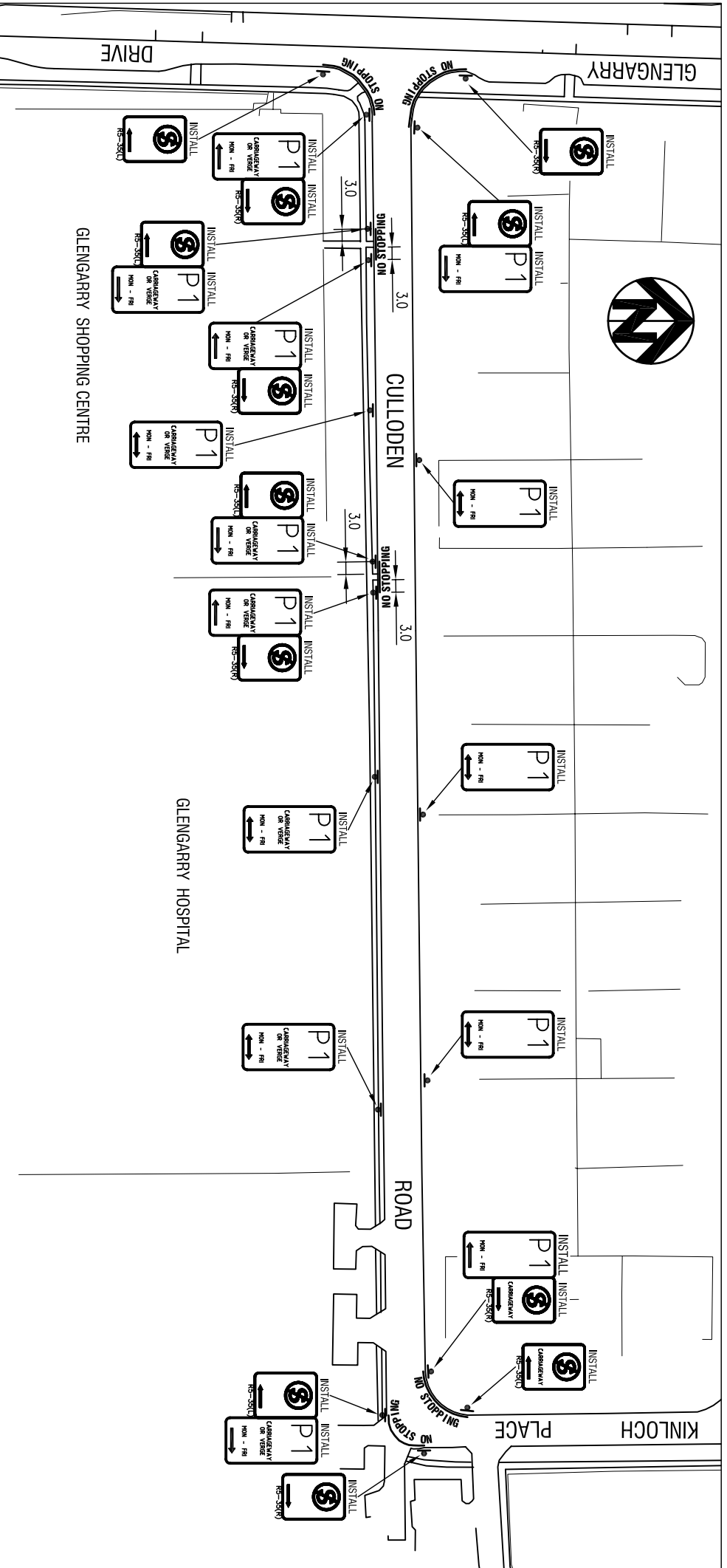


Scale(A4):1:5737

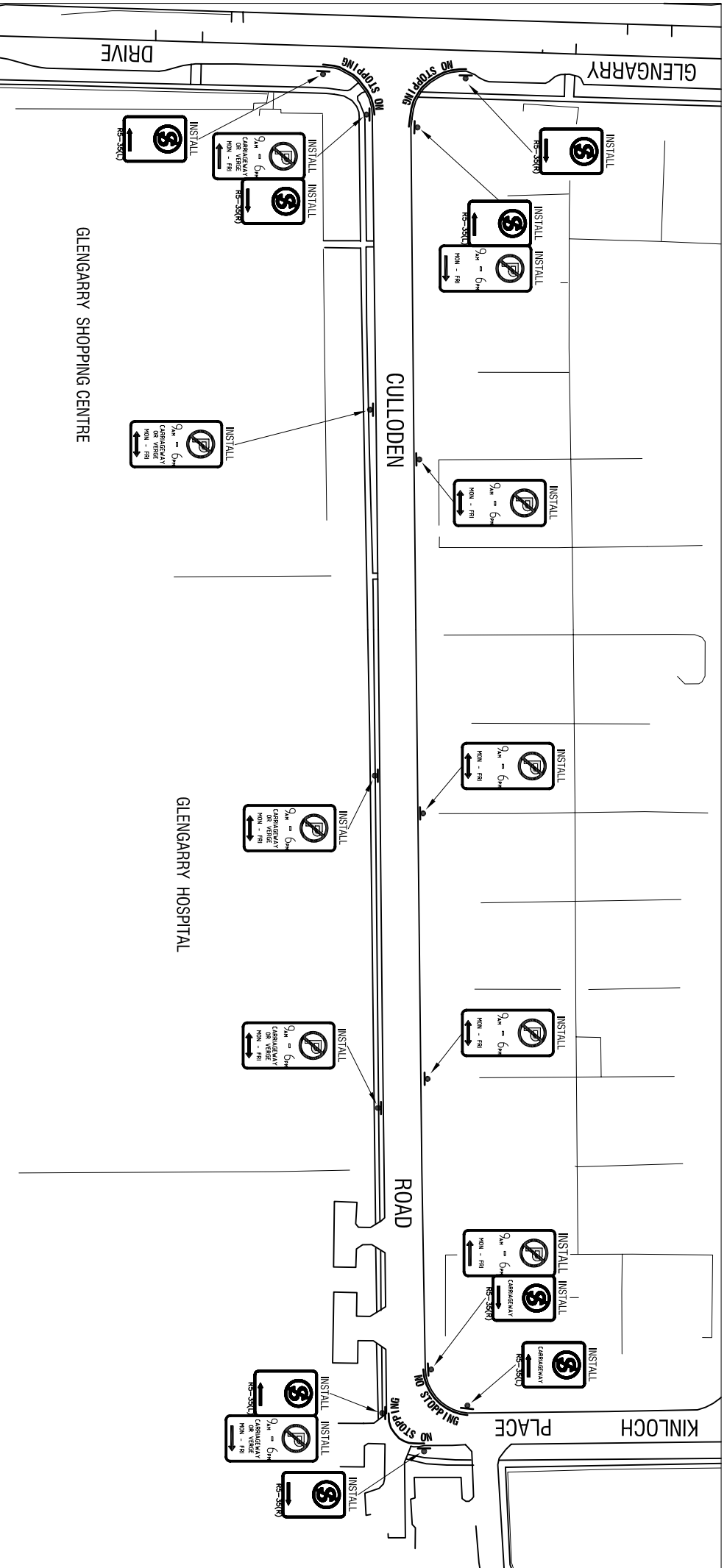
18 December 2007

DISCLAIMER: While every care is taken to ensure the accuracy of this data, the City of Joondalup makes no representations or warranties about its accuracy, completeness or suitability for any particular purpose and disclaims all liability for all expenses, losses, damages and costs which you might incur as a result of the data being inaccurate or incomplete in any way and for any reason.

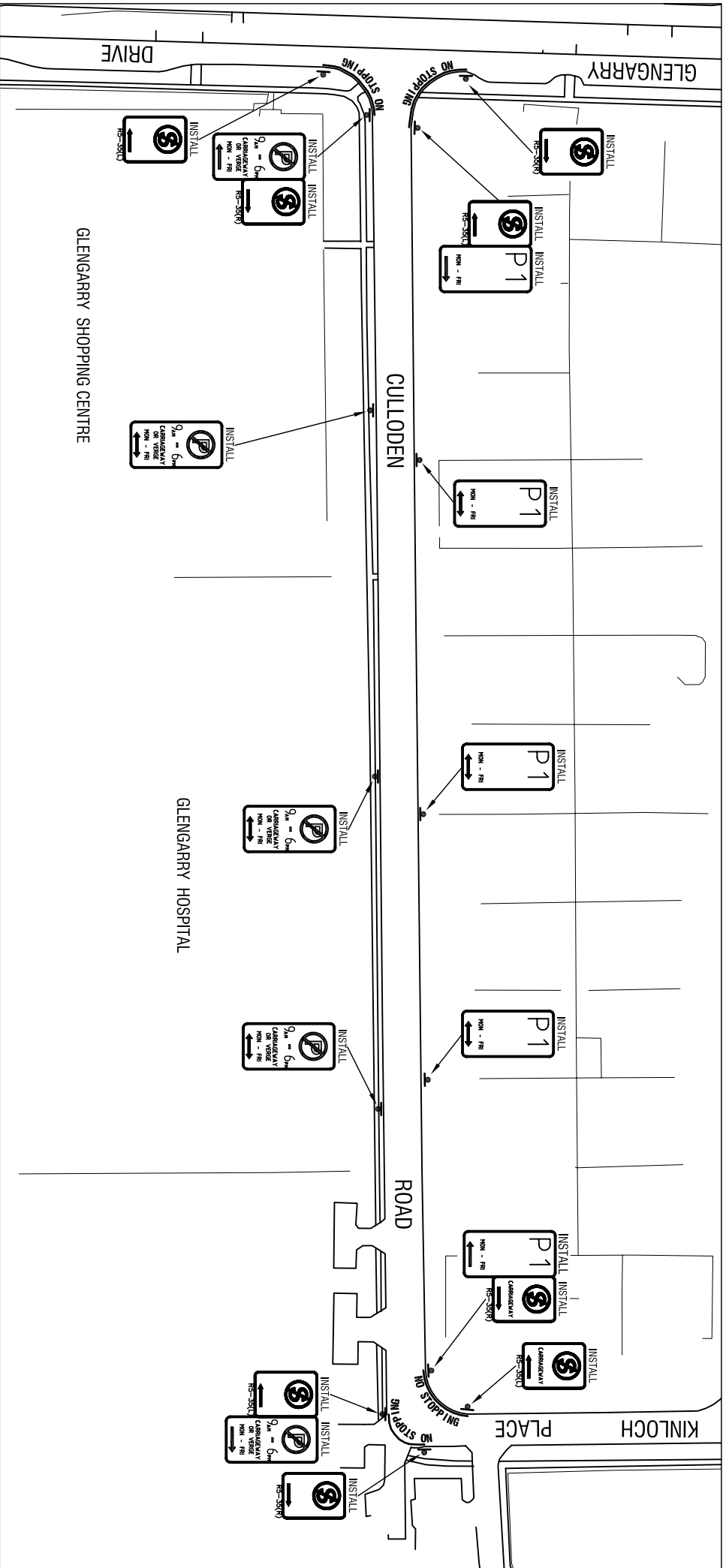
CULLODEN ROAD PARKING PROHIBITIONS LOCALITY PLAN



(OPTION: 1) CULLODEN ROAD - PARKING PROHIBITION - APPROVED BY COUNCIL / /2007 REPORT No. CJ - /07

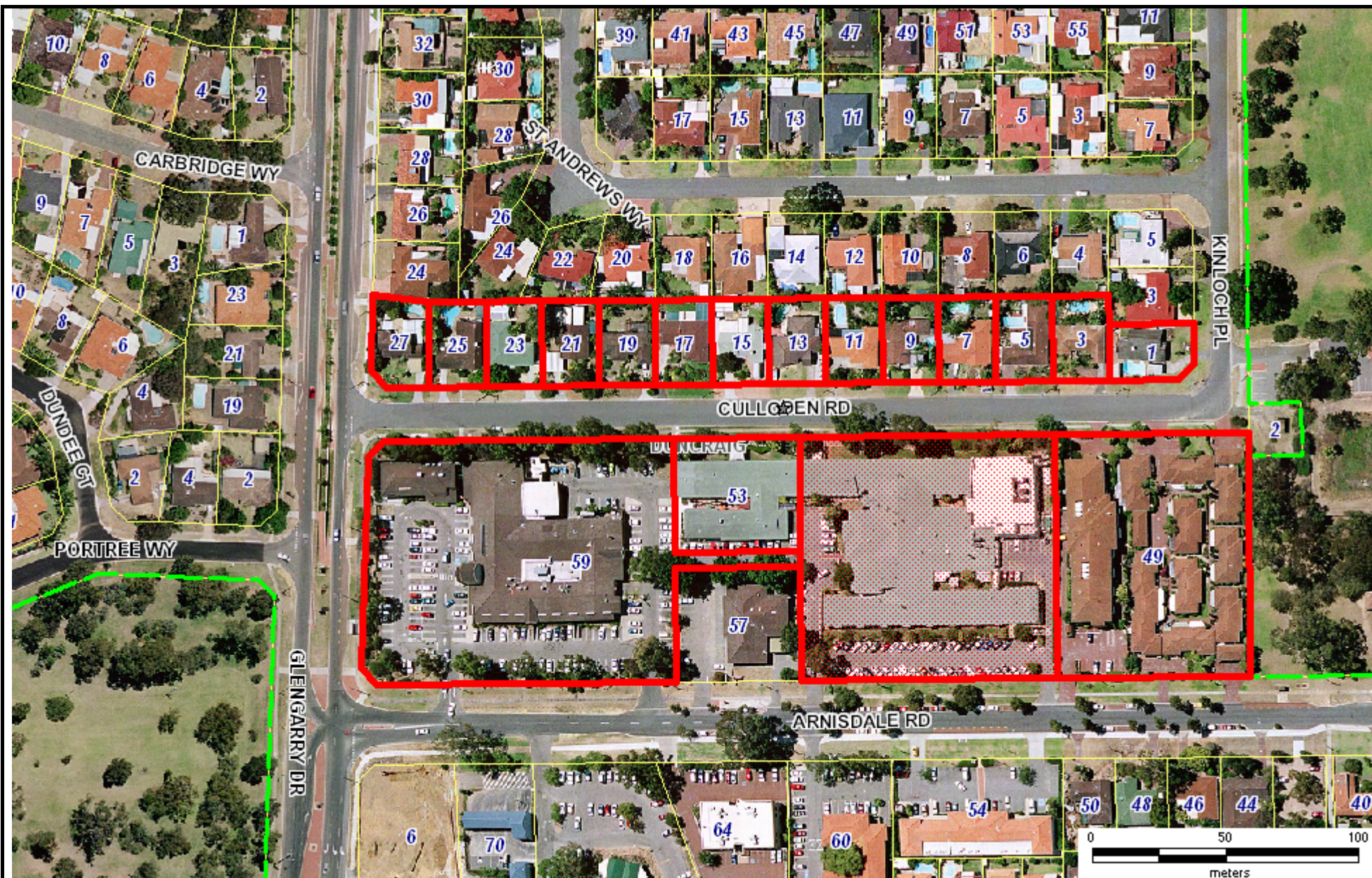


(OPTION: 2) CULLODEN ROAD - PARKING PROHIBITION - APPROVED BY COUNCIL / /2007 REPORT NO. CJ - /07



ATTACHMENT: 2

(OPTION: 3) CULLODEN ROAD - PARKING PROHIBITION - APPROVED BY COUNCIL / /2007 REPORT No. CJ - /07



90 Boas Ave, Joondalup WA 6027
 PO Box 21, Joondalup WA 6919
 Ph: 08 9400 4000
 Fax: 08 9300 1383
 info@joondalup.wa.gov.au
 www.joondalup.wa.gov.au



Scale(A4):1:2000

18 December 2007

DISCLAIMER: While every care is taken to ensure the accuracy of this data, the City of Joondalup makes no representations or warranties about its accuracy, completeness or suitability for any particular purpose and disclaims all liability for all expenses, losses, damages and costs which you might incur as a result of the data being inaccurate or incomplete in any way and for any reason.

**CULLODEN ROAD PARKING PROHIBITIONS
 MAIL MERGE 14.09.07**

✓1	SUPPORTS PARKING PROHIBITIONS - OPTION 1	✗	OBJECTS TO ANY PARKING PROHIBITIONS
✓2	SUPPORTS PARKING PROHIBITIONS - OPTION 2	○	NO REPLY
✓3	SUPPORTS PARKING PROHIBITIONS - OPTION 3		

