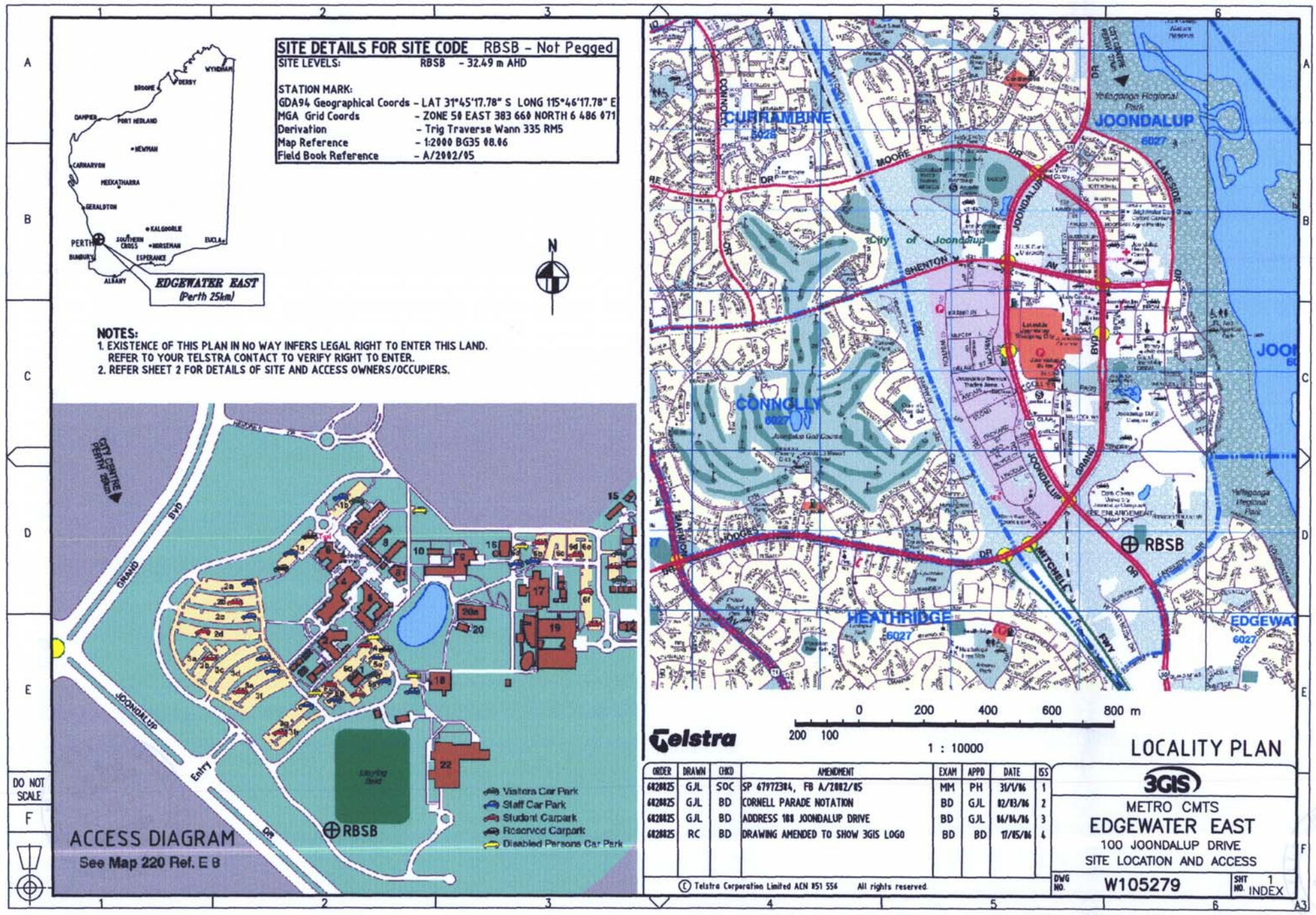


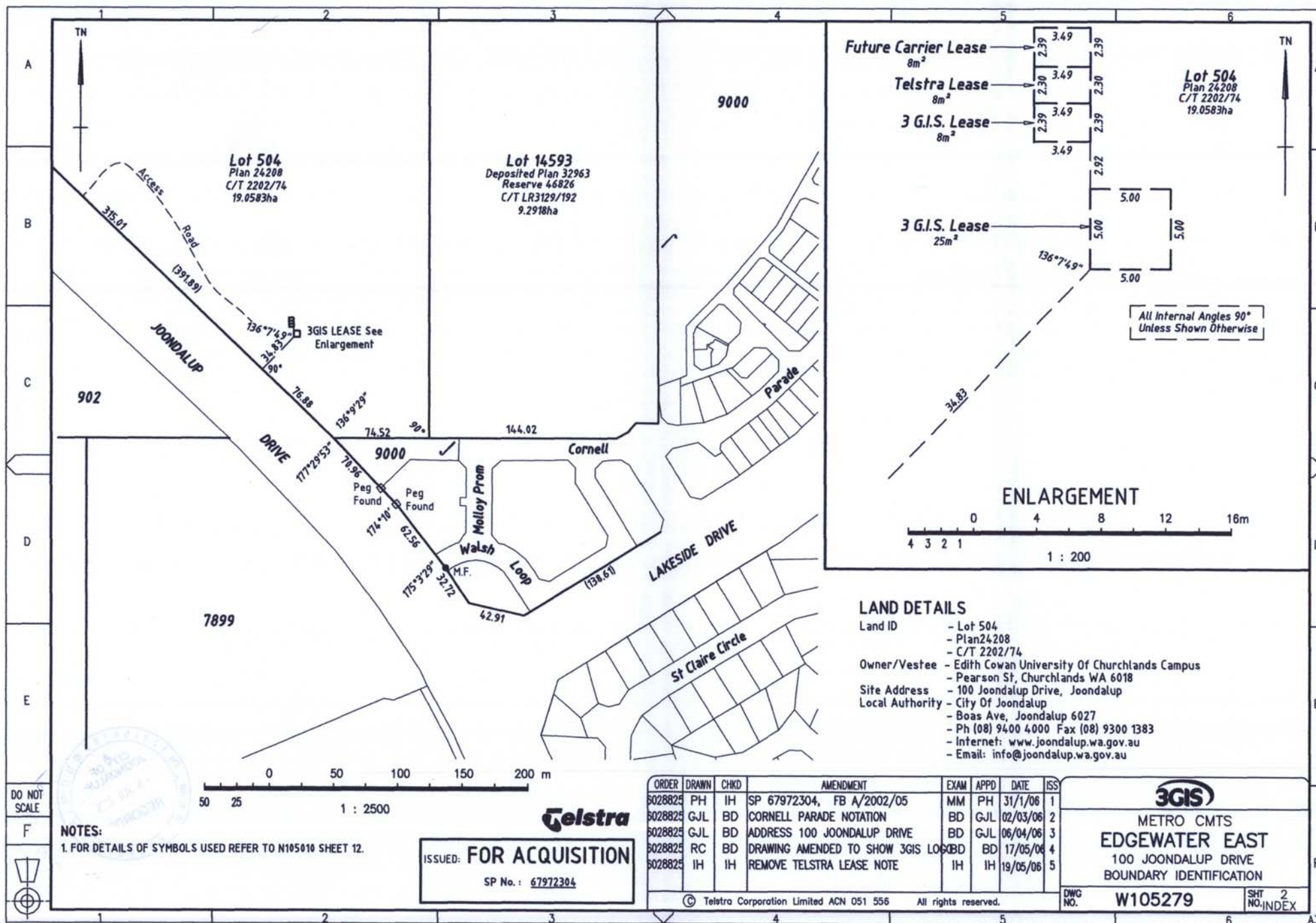


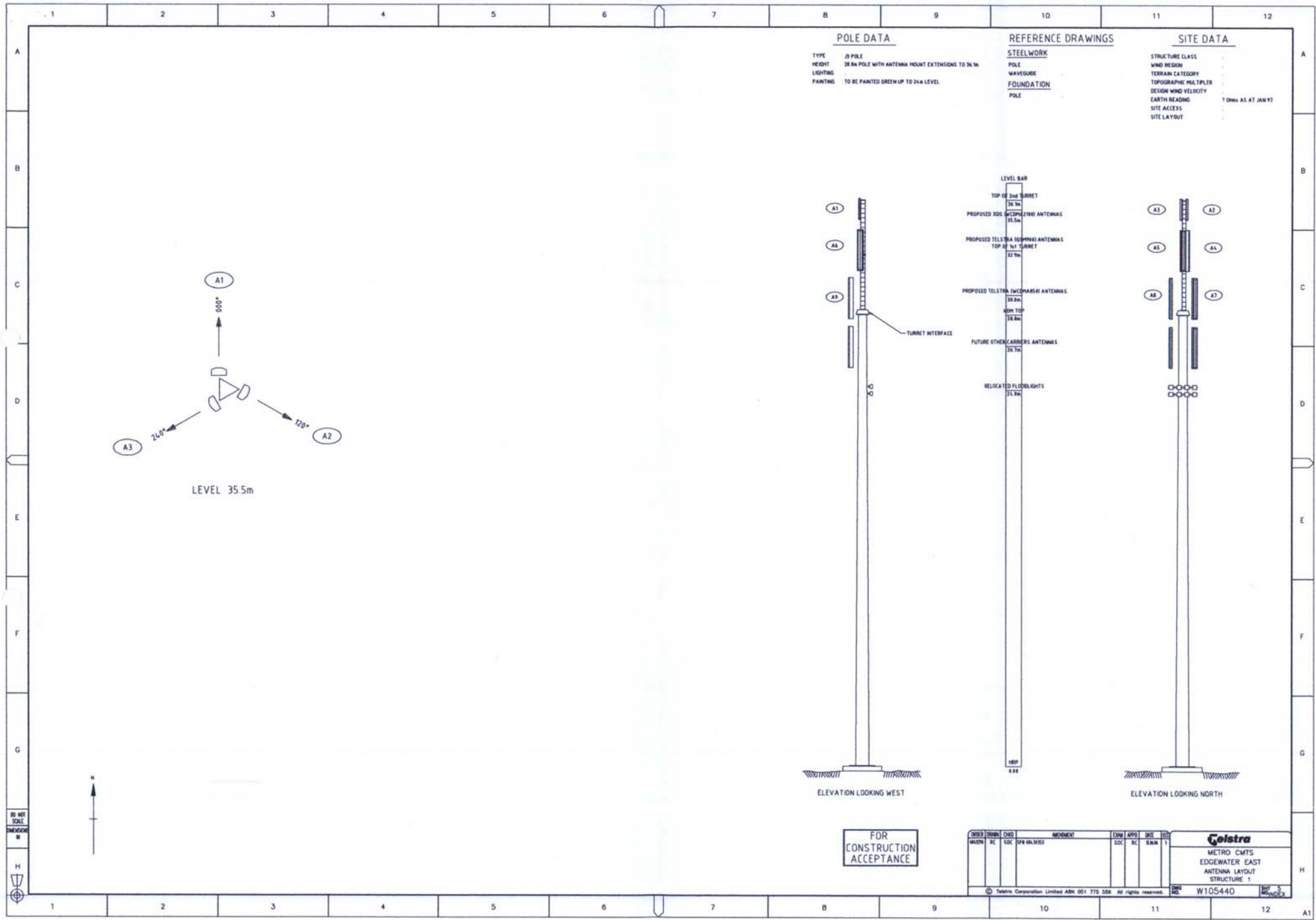
Digital Topography : DLI October 2002
Digital Photography : DLI December 2005
Prepared by City of Joondalup : 171006 - djt

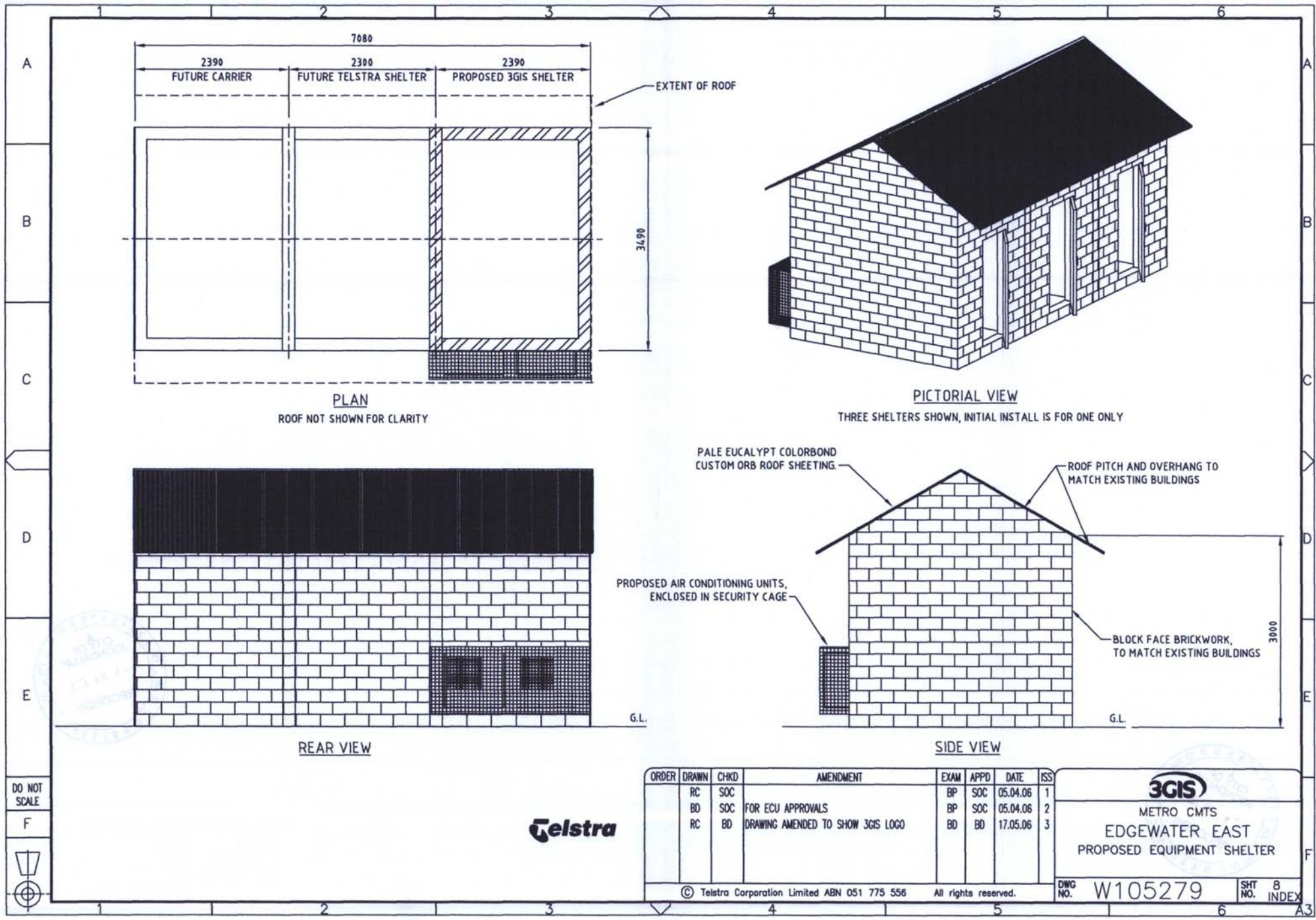
20 0 20 40 Meters











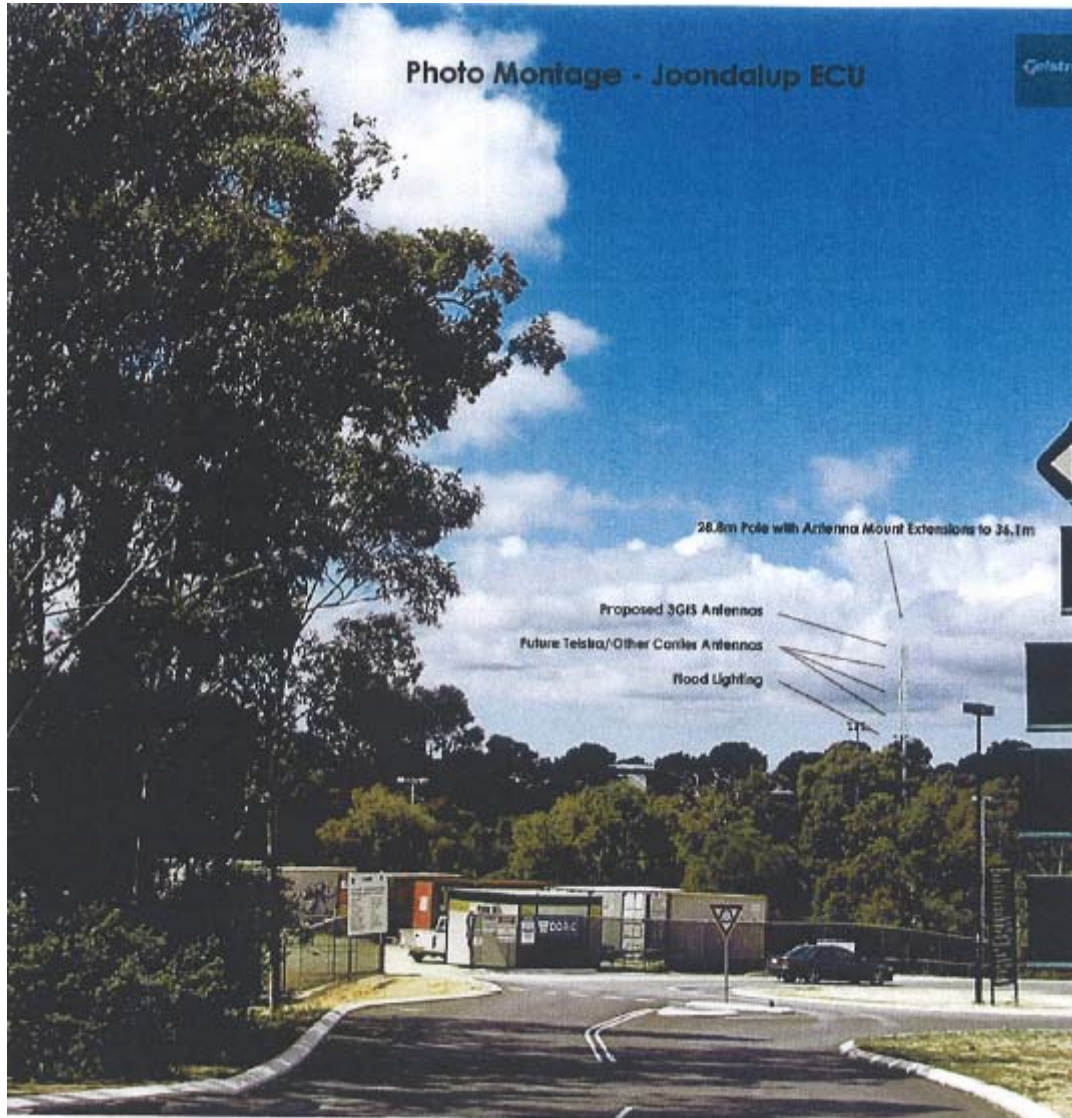
DO NOT SCALE

F



ORDER	DRAWN	CHKD	AMENDMENT	EXAM	APPD	DATE	ISS
	RC	SOC		BP	SOC	05.04.06	1
	BD	SOC	FOR ECU APPROVALS	BP	SOC	05.04.06	2
	RC	BD	DRAWING AMENDED TO SHOW 3GIS LOGO	BD	BD	17.05.06	3

© Telstra Corporation Limited ABN 051 775 556 All rights reserved.		 METRO CMTS EDGEWATER EAST PROPOSED EQUIPMENT SHELTER
DWG NO. W105279	SHT NO. 8	INDEX





POLICY 7-11 – TELECOMMUNICATIONS FACILITIES

STATUS:	City Policy - <i>A policy that is developed for administrative and operational imperatives and has an internal focus.</i> <i>City policies are referred to Council for review and endorsement.</i>
RESPONSIBLE DIRECTORATE:	Planning and Community Development
OBJECTIVE:	

STATEMENT:

- 1 The City recognises that it is bound by the Federal legislation relating to telecommunication facilities and that it has no jurisdiction over the location or installation of “low impact” facilities as defined under the *Telecommunications (Low-Impact Facilities) Determination Act 1997*.
- 2 The City, as a general rule, does not support the installation or location of telecommunication facilities, particularly in the vicinity of schools, childcare establishments, hospitals and general residential areas.
- 3 The City recognises the right of land owners/applicants to make applications for planning approval for telecommunication facilities deemed to be other than low impact under the *Telecommunications Act*, and acknowledges its obligation to make a recommendation to the WAPC or determine the application in its own right.
- 4 Having received a Development Application for a telecommunication facility, the City will advertise the proposal for a 30-day period and consult with the local community surrounding the proposed site. Owners and occupiers of property within a radius of 500m will be advised in writing, at the cost of the applicant, and afforded an opportunity to make comment to the Council prior to the matter being considered at a Council meeting.
- 5 In making a recommendation to the WAPC or determining the application the Council will have regard to;
 - (a) the comments and concerns of the local community,
 - (b) the merits of the particular proposal
 - (c) compliance with the industry code of practice,
 - (d) compliance with matters required to be considered under the District Planning Scheme, and
 - (e) the general concerns of the Council regarding the potential effects of telecommunication facilities referred to in point 2 above.



Summary of Estimated RF EME Levels around the proposed Mobile Phone Base Station at ECU, 100 Joondalup Dve, Joondalup 6027, Edgewater East WA

Introduction:

Date 18/08/06

This report summarises the estimation of maximum cumulative radiofrequency (RF) electromagnetic energy (EME) levels at ground level emitted from the proposed Mobile Phone Base Station antennas at ECU, 100 Joondalup Dve, Joondalup 6027 Edgewater East WA. Maximum EME levels estimated are at distances of 5.0, 50.0, 100.0, 200.0, 300.0, 400.0, 500.0 m from the base station. The procedures for making the estimates have been developed by the Australian Radiation Protection And Nuclear Safety Agency (ARPANSA)¹. These are documented in the ARPANSA Technical Report; "Radiated EME Exposure Levels - Prediction Methodologies" which is available at www.arpansa.gov.au

EME Health Standard

ARPANSA, an agency of the Commonwealth Department of Health has established a Radiation Protection Standard² specifying limits for continuous exposure of the general public to RF transmissions at frequencies used by mobile phone base stations. Further information can be gained from the ARPANSA web site.

The Australian Communications and Media Authority (ACMA)³ mandates exposure limits for continuous exposure of the general public to RF EME from mobile phone base stations. Further information can be found at the ACMA website www.acma.gov.au/ACMAINTER:STANDARD:pc=PC_2798

Proposed Site Radio Systems

3GIS WCDMA 2100	Telstra WCDMA 850		

Table of Predicted EME Levels – Proposed

Distance from the antennas at ECU, 100 Joondalup Dve, Joondalup 6027 bearing 134.58 ° (m)	Maximum Cumulative EME Level - All Carriers (% of ACMA mandated exposure limits ⁴)
5	0.0064
50	0.0096
100	0.018
200	0.15
300	0.07
400	0.04
500	0.026
Maximum EME level 162.075 m, 134.58° from the antennas at ECU, 100 Joondalup Dve, Joondalup 6027	0.2

Note: This estimation is for the maximum level of RF EME at 1.5m above the ground from the proposed antennas. The estimated levels have been calculated on the maximum mobile phone call capacity anticipated for this site. This estimation does not include possible radio signal attenuation due to buildings and the general environment. The actual EME levels will generally be significantly less than predicted due to path losses and the base station automatically minimising transmitter power to only serve established phone calls⁵.

Summary – Proposed Radio Systems

RF EME levels have been estimated from the proposed antennas at ECU, 100 Joondalup Dve, Joondalup 6027 Edgewater East WA. The maximum cumulative EME level at 1.5 m above ground level is estimated to be 0.2 % of the ACMA mandated exposure limits.

Existing Site Radio Systems

There are currently no cellular radio systems installed at this site.

Reference Notes:

1. The Australian Radiation Protection and Nuclear Safety Agency (ARPANSA) is a Federal Government agency incorporated under the Health portfolio. ARPANSA is charged with responsibility for protecting the health and safety of people, and the environment, from the harmful effects of radiation (ionizing and non-ionizing).
2. Australian Radiation Protection and Nuclear Safety Agency (ARPANSA), 2002, 'Radiation Protection Standard: Maximum Exposure Levels to Radiofrequency Fields — 3 kHz to 300 GHz', Radiation Protection Series Publication No. 3, ARPANSA, Yallambie Australia. [Printed version: ISBN 0-642-79400-6 ISSN 1445-9760] [Web version: ISBN 0-642-79402-2 ISSN 1445-9760]
3. The Australian Communications and Media Authority (ACMA) regulates telecommunications and radiocommunications, including licensing, compliance with codes and standards, spectrum management and consumer safeguards. It also represents Australia's communications interests internationally.
4. ACMA mandated exposure limits as in force at the issue date of this report. Further information refer to the ACMA web site www.acma.gov.au/ACMA/INTER:STANDARD:pc=PC_2052
5. The EME predictions in this report assume a worst-case scenario being:
 - base station transmitters operating at maximum power (no automatic power reduction)
 - simultaneous telephone calls on all channels
 - an unobstructed line of sight view to the antennas.In practice a worst-case scenario is rarely the case. There are often trees and buildings in the immediate vicinity, and cellular networks automatically adjust transmit power to suit the actual telephone traffic. For these reasons, care should be taken when comparing prediction reports & actual measurements, as the predicted levels will often be considerably higher.