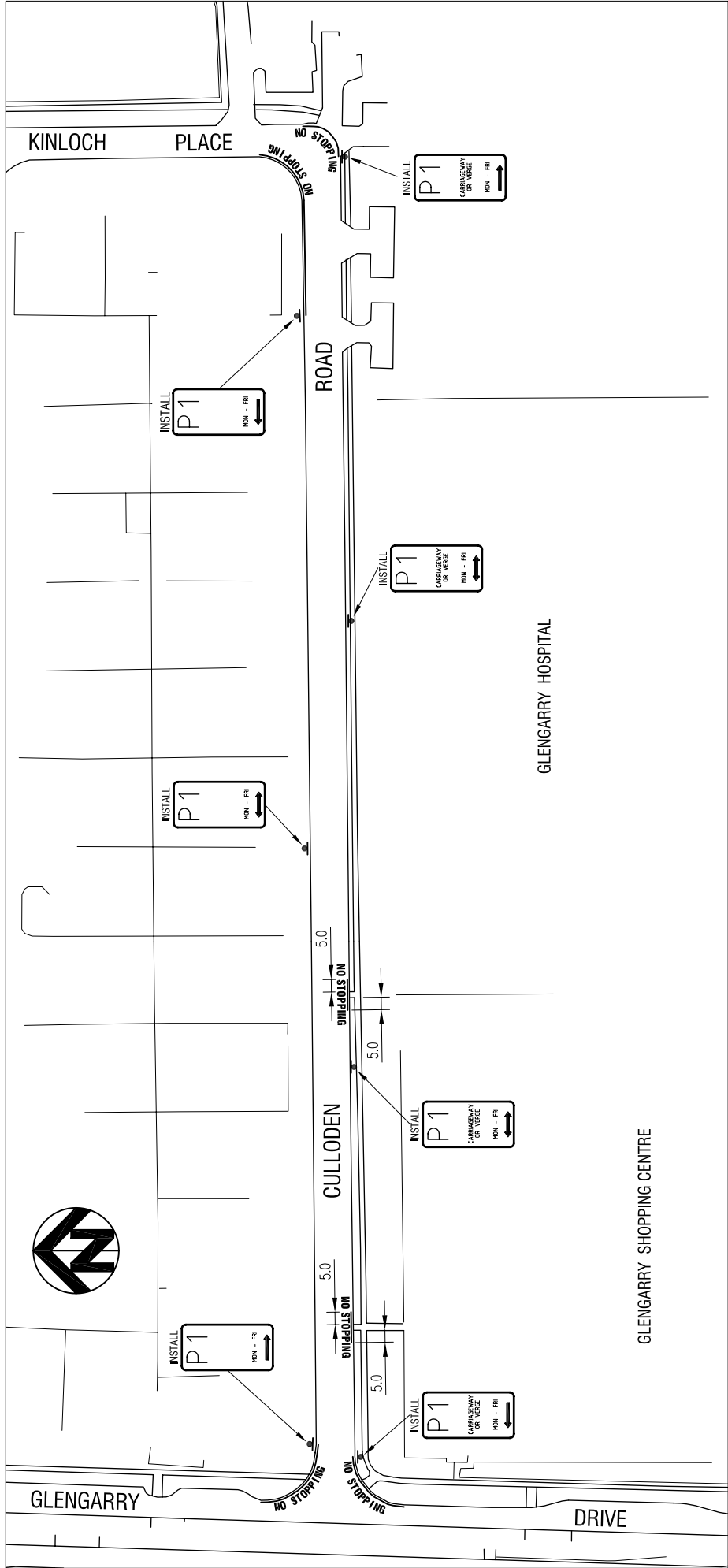


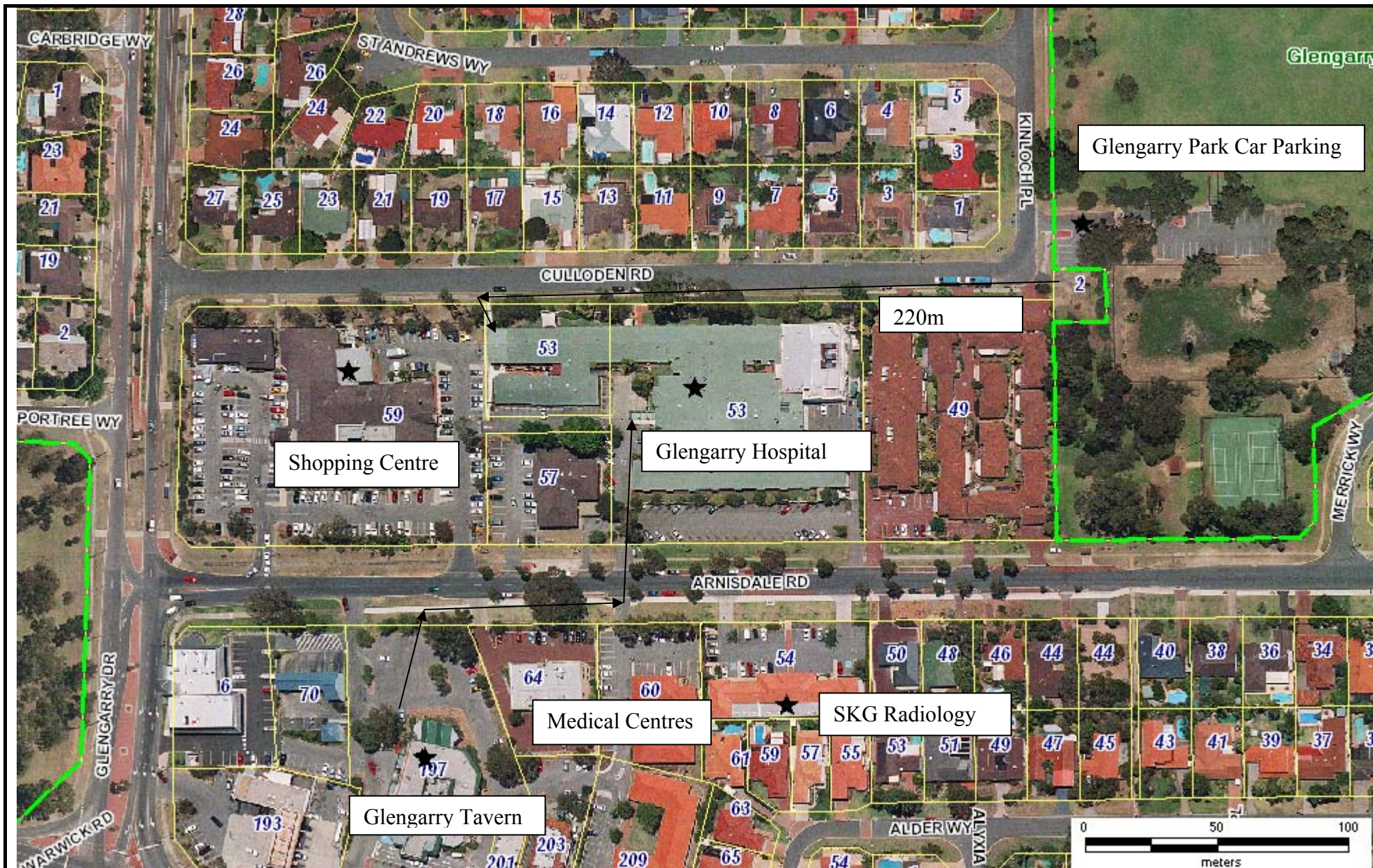
No	REVISION	BY	DATE	AUTH	ODU
A	DRAFT PLOT	C.P.L.	14/08/2007		
0	ISSUED FOR CONSTRUCTION	C.P.L.	14/08/2007		



CULLODEN ROAD - PARKING PROHIBITION - APPROVED BY COUNCIL 18/12/2007 REPORT No. CJ278 - 12/07

<div> <div></div> <div>CITY OF JOONDALUP</div> </div>	<div> <div>CULLODEN ROAD</div> <div>PROPOSED PARKING PROHIBITIONS</div> </div>			<div> <div>FILE No.</div> <div>-</div> </div>		<div> <div>DRAWING No</div> <div>E1704 -1 - 0</div> </div>	<div> <div>REVISION</div> <div></div> </div>	<div> <div>ORIGINAL DWS SIZE</div> <div>A3</div> </div>
	<div> <div>DESIGNED/DRAWN</div> <div>C.P.LAW</div> <div>14/08/2007</div> </div>			<div> <div>APPROVED</div> <div>MANAGER: INFRASTRUCTURE MANAGEMENT SERVICES</div> <div>APPROVED FOR CONSTRUCTION</div> <div>/ / 2007</div> </div>		<div> <div>LOCALITY</div> <div>DUNCRAIG</div> </div>		
<div> <div>DATUM</div> <div>LOCAL</div> </div>		<div> <div>GRID</div> <div>LOCAL</div> </div>		<div> <div>HORIZONTAL</div> <div>10 0 10 20 30 40</div> </div>		<div> <div>SURVEY INFORMATION</div> <div>SCALE IN METRES</div> <div>1:1000</div> </div>		
<div> <div>DRAWING DIRECTORY:</div> <div>ICDS/VIEW GENERAL ENGINEERING DRAWINGS</div> <div>CD FROM ARCHIVE No.</div> </div>		<div> <div>CHECKED BY</div> <div>CD-PROJECTS: PROJECTS AND TRAFFIC ENGINEERING</div> <div>AUTHORISED</div> <div>/ / 2007</div> </div>		<div> <div>DESIGNED/DRAWN</div> <div>C.P.LAW</div> <div>14/08/2007</div> </div>		<div> <div>TEAM LEADER: CIVIL PROJECTS SERVICES</div> <div>DIRECTOR: INFRASTRUCTURE SERVICES</div> <div>/ / 2007</div> </div>		





90 Boas Ave, Joondalup WA 6027  
 PO Box 21, Joondalup WA 6919  
 Ph: 08 9400 4000  
 Fax: 08 9300 1383  
 info@joondalup.wa.gov.au  
 www.joondalup.wa.gov.au



Scale(A4):1:2000

Date: 2 July 2008

DISCLAIMER: While every care is taken to ensure the accuracy of this data, the City of Joondalup makes no representations or warranties about its accuracy, completeness or suitability for any particular purpose and disclaims all liability for all expenses, losses, damages and costs which you might incur as a result of the data being inaccurate or incomplete in any way and for any reason.

## Alternative Parking at Glengarry Park