









### **FREQUENCY AND PURPOSE ON THE USE OF THE PEDESTRIAN ACCESSWAY BETWEEN**

Questions (2) and (3) of the questionnaire forwarded to local residents requested information on how often they used the PAW and why it was used. Of the 20 users of the PAW, many residents use it for accessing more than one community

<b>Supporters – Frequency and Purpose</b>		<b>Objectors – Frequency and Purpose</b>		<b>Neutrals – Frequency and Purpose</b>	
<b>Daily</b>		<b>Daily</b>		<b>Daily</b>	
Public Transport	0	Public Transport	1	Public Transport	0
Shops	0	Shops	1	Shops	0
School	0	School	2	School	0
Parks	0	Parks	4	Parks	1
Exercise/Social	0	Exercise/Social	3	Exercise/Social	1
Library		Library	0	Library	0
<b>Weekly</b>		<b>Weekly</b>		<b>Weekly</b>	
Public Transport	0	Public Transport	2	Public Transport	0
Shops	0	Shops	1	Shops	0
Parks	0	Parks	2	Parks	0
Exercise/Social	0	Exercise/Social	4	Exercise/Social	1
<b>Fortnightly</b>		<b>Fortnightly</b>		<b>Fortnightly</b>	
Public Transport	0	Public Transport	0	Public Transport	0
Shops	0	Shops	0	Shops	2
Exercise/Social	2	Exercise/Social	1	Exercise/Social	3
Parks	1	Parks	0	Parks	0
<b>Monthly</b>		<b>Monthly</b>		<b>Monthly</b>	
Exercise/Social	3	Exercise/Social	0	Exercise and Social	1
Parks	1	Parks	0	Parks	0



**KEY RESULTS FROM QUESTIONNAIRES RE PROPOSED CLOSURE OF PAW  
BETWEEN**

**Of the questionnaires returned from residents, there are 20 users of the PAW and 34 non-users**

<b>Supporters</b>		<b>Objectors</b>		<b>Neutral</b>	
Users of the PAW	5	Users of the PAW	9	Users of the PAW	6
Non users of the PAW	13	Non- users of the PAW	4	Non users of the PAW	17
<b>Total Supporting</b>		<b>Total Objecting</b>		<b>Total Neutrals</b>	

**Information provided from the 20 residents that use the PAW**

<b>Level of Use</b>	<b>PAW used for access to -</b>	<b>PAW used at night?</b>	<b>Alternative route to use if closed?</b>	<b>Inconvenienced if PAW closed?</b>	<b>Noticed any anti-social behaviour in PAW?</b>	<b>Noticed any vandalism in PAW?</b>
Daily 5	Public Transport 4	Yes 9	Yes 18	Yes 11	Yes 7	Yes 5
Weekly 7	Shopping Centre 4	No 13	No 6	No 16	No 21	No 20
Fort-nightly 8	School 3					
Monthly 3	Parks 8					
	Exercise/ Social 17					
<b>Comment:</b>	Multiple access by some users 11					



## URBAN DESIGN ASSESSMENT

### High

- PAW provides a direct route to community facilities
- safe, alternative route does not exist
- PAW part of a continuous PAW link - ie a chain of two or three PAWs and is linked to streets with existing path systems
- PAW is a designated 'safe route to school', 'bikeplan'

### Medium

- PAW provides a route to community facilities but not direct
- An alternative route exists but some inconvenience
- PAW not designated as a 'safe route to school' or bikeplan

### Low

- PAW not linked to any community facility
- a safe, reasonable alternative walkway exists
- PAW is not part of a continuous link to community facilities
- PAW is not designated as a 'safe route to school' or bikeplan

## NUISANCE ASSESSMENT

### High

- There is a high and consistent frequency in the occurrence of criminal activity and/or antisocial behaviour compared to elsewhere in suburb
- The number of different types of occurrences is high and is directly related to the PAW
- The severity of criminal activity and/or antisocial behaviour is considered higher than elsewhere in the suburb
- Occurrences substantiated by questionnaire respondents

### Medium

- Frequent occurrence of criminal activity and antisocial behaviour compared to elsewhere in the suburb.
- There are several different types of occurrences that are directly related to the PAW
- The severity of criminal activity and/or antisocial behaviour is considered higher than elsewhere in the suburb

### Low

- Occurrence of criminal activity or antisocial behaviour similar to elsewhere in the suburb.
- Types of offences are limited to antisocial behaviour
- The severity of antisocial behaviour is similar to elsewhere in the suburb

## COMMUNITY IMPACT ASSESSMENT

### High

- Significant portion of respondents not in favour of closures (over 50%)
- High portion of household use the PAW regularly
- High portion of users inconvenienced by closure (over 50%)

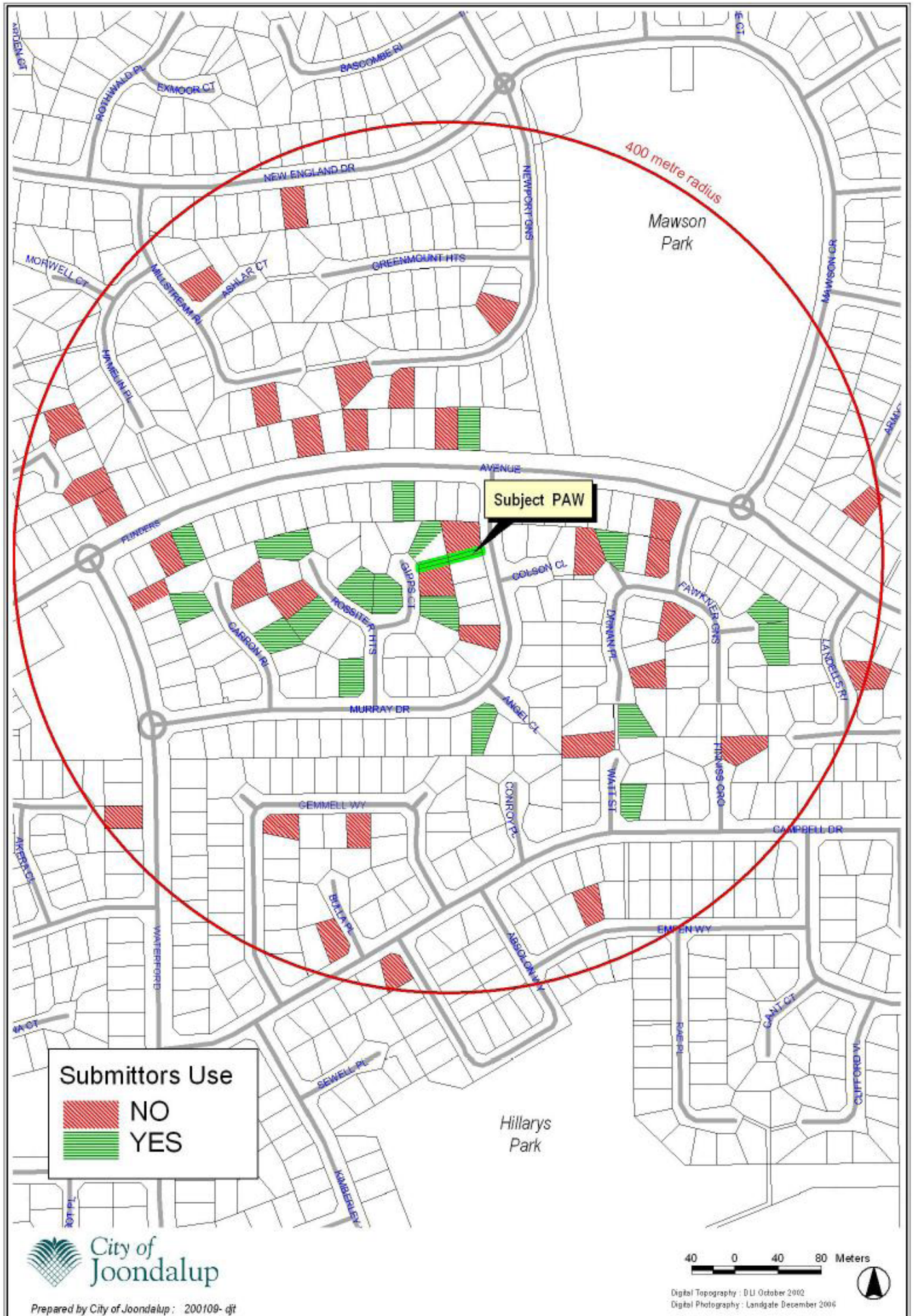
### Medium

- Medium portion of respondents not in favour of closure (over 30%)
- Moderate level of households using the PAW
- Moderate portion of users inconvenienced by closure of the PAW (30-50%)

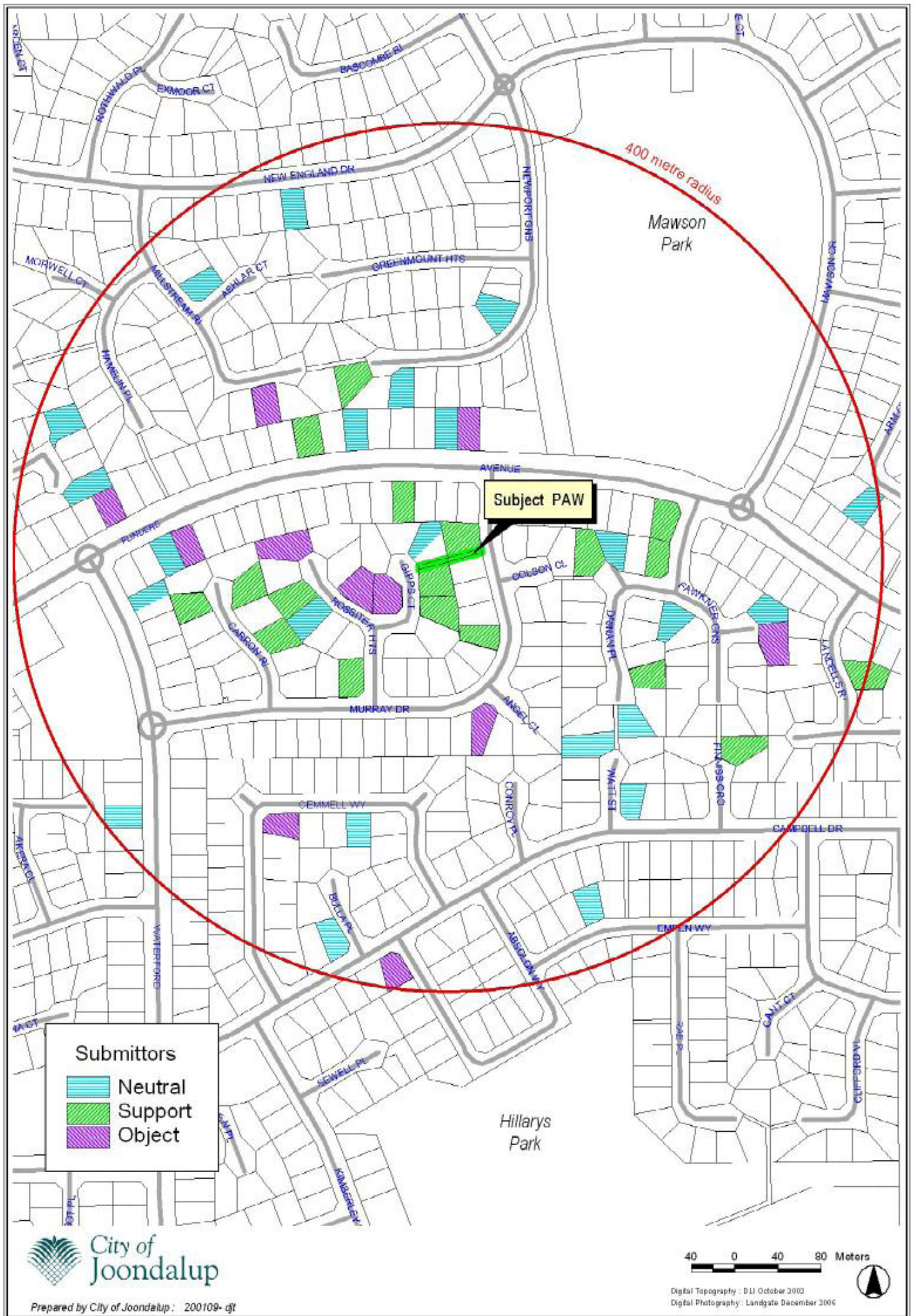
### Low

- High number of residents in favour of closure (over 75%)
- Low number of households using the PAW
- Few users inconvenienced by closure (less than 30%)

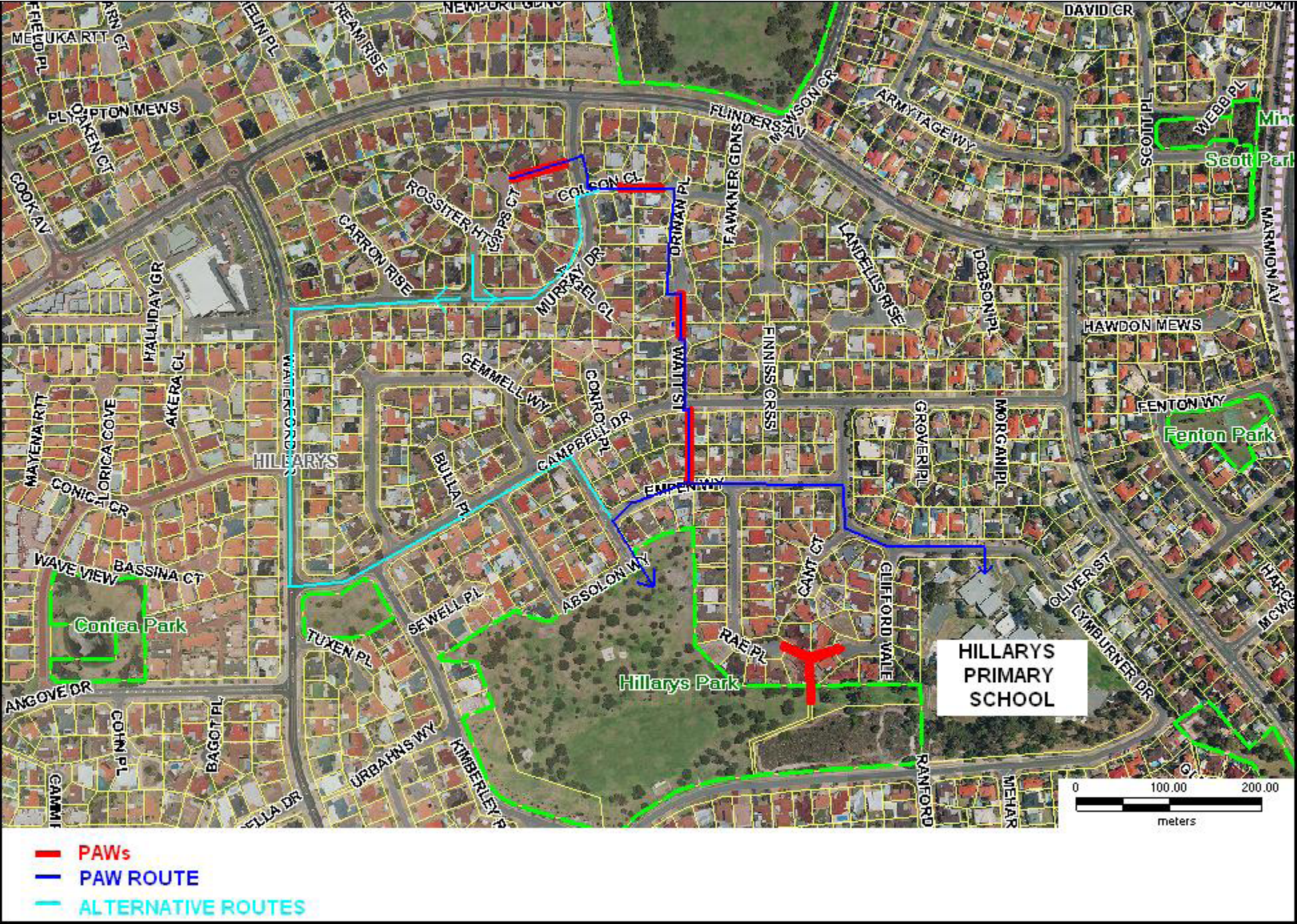






















REQUEST FOR CLOSURE OF PEDESTRIAN ACCESSWAY  
BETWEEN MURRAY DRIVE AND GIPPS COURT, HILLARYS  
[55212]

APPLICANTS CHALLENGING SUBMISSION REGARDING  
URBAN DESIGN AS MEDIUM

Assessment Criteria issues with survey design

1. The policy document (2a) on urban design assessment requires specific assessment of cycling use. This is not reported in the survey results. The term 'exercise' used in the survey results does not comply with policy.
2. The policy document (2a) on urban design assessment requires specific assessment of pedestrian and cycle movement network throughout the locality. The obvious locality referred to is Hillarys. The survey went out to residents within 400 metre radius of the PAW. This is consistent with the Community Impact assessment criteria at (2c) but inconsistent with the Urban Design assessment criteria at (2a)

Assessment Criteria issues with survey conclusions

1. The PAW is not linked with any community facility. The 'officers' report that access to Hillarys Shopping Centre has more direct routes elsewhere is correct. The linkage with Mawson Park saves one minutes walk only for residents of Gipps Crt and Rossiter Heights which is inconsistent and inconsequential if part of the policy is to encourage 'exercise'
2. A safe and reasonable walkway exists. Murray Drive is the obvious alternative. Murray Drive has defined pedestrian pavement for walking and is well lit. Gipps Crt does not have any defined pedestrian pavement and is lit, but nowhere near as well lit as Murray Drive.
3. Gipps Court is not part of a continuous link to community facilities. Gipps Crt is basically a dead end and anyone using the PAW is not using it for the purpose of linking to a community facility
4. The PAW is not designated as a 'safe route to school' or bike plan.

Accordingly the applicants request an urban design assessment of low.

Messrs Smyth, Jaffar and Mosley  
4 March 2009