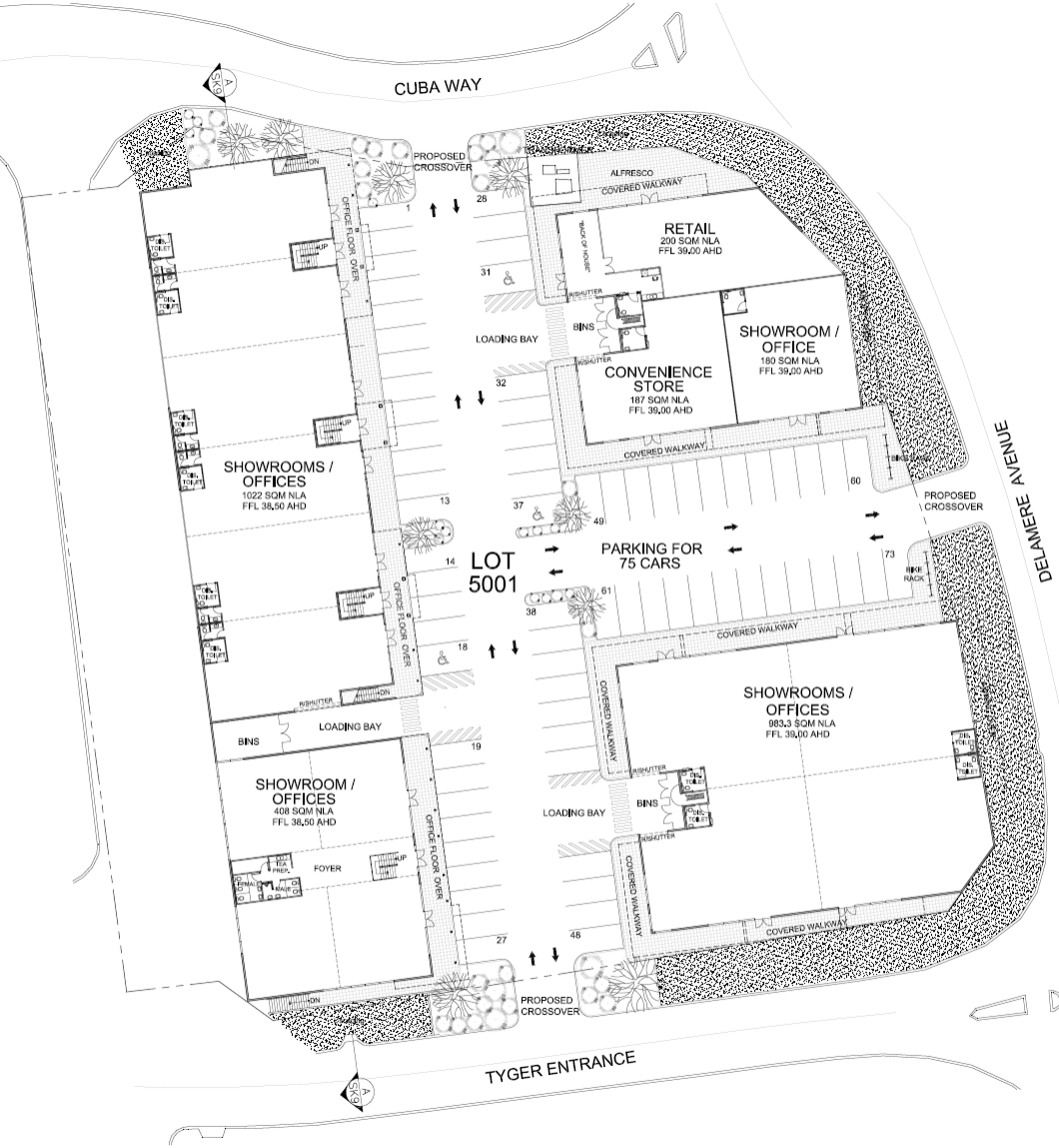


SITE / UNDERCROFT FLOOR PLAN
SCALE 1:200



Project	PROPOSED COMMERCIAL DEVELOPMENT	Drawn	AK	Checked	AK
Location	LOT 5001 DELAMERE AVE. CURRAMBINE	PH			
Scale	1:200	Date	NOV 2008	Sheet	70.08
Author	HODGE+COLLARD ARCHITECTS	Revised	BT	SK11	



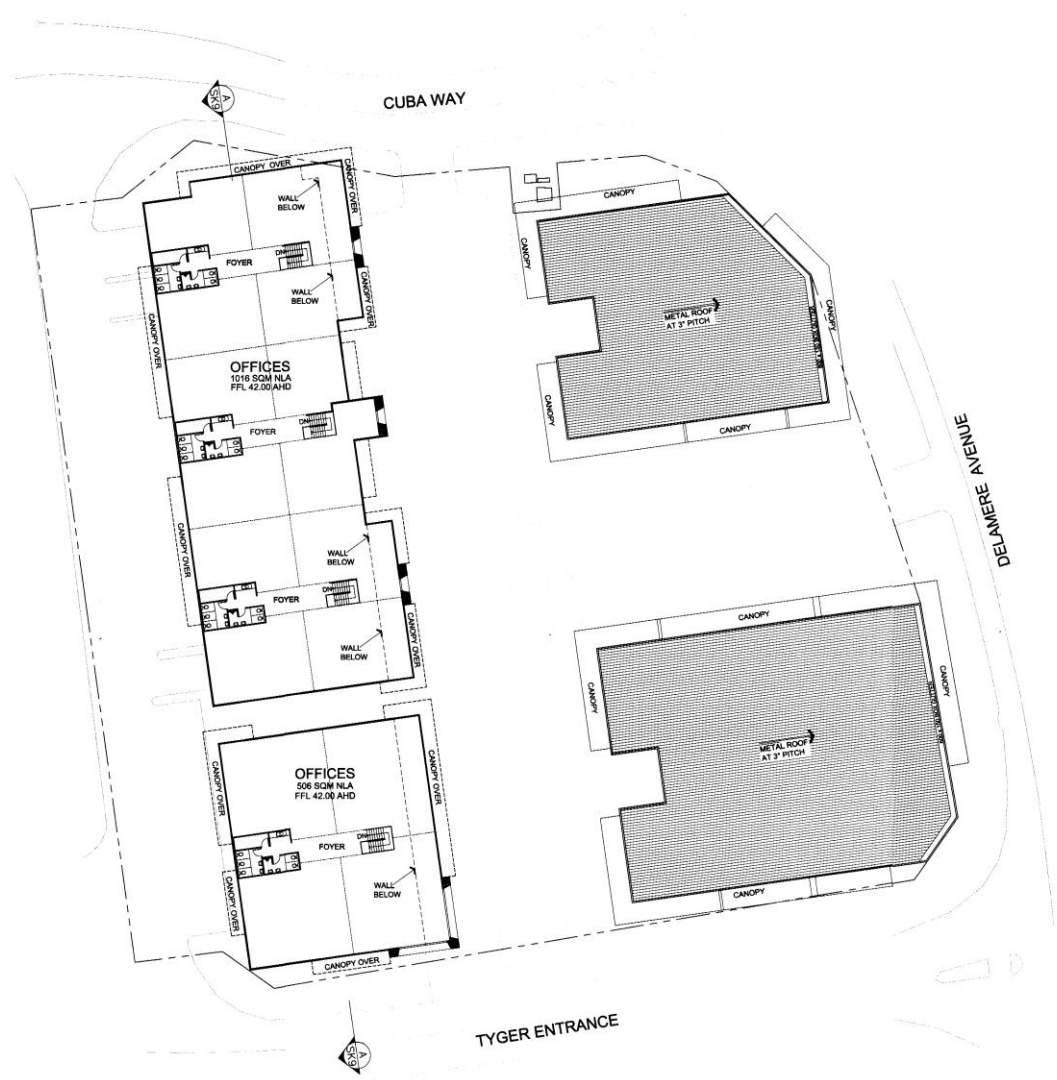
SITE / GROUND FLOOR PLAN
SCALE 1:200



SCHEDULE OF ACCOMMODATION (NLA)	
SHOWROOM / OFFICES	4,117 SQM
RETAIL (Excl. Back of House)	200 SQM
CONVENIENCE STORE	187 SQM
TOTAL	4504 SQM
LANDSCAPING	
	461 SQM
CAR PARKING REQUIRED:	
OFFICE / SHOWROOM ■ 136 CAR BAYS	
RETAIL ■ 11 CAR BAYS	
CORNER STORE ■ 8 CAR BAYS	
TOTAL ■ 157 CAR BAYS	
CAR PARKING PROVIDED:	
ON GRADE PARKING ■ 74 CAR BAYS	
PROPOSED UNDERCROFT PARKING ■ 83 CAR BAYS	
TOTAL ■ 157 CAR BAYS	

INTERIM ISSUE ONLY

Project Name	Proposed Commercial Development	Scale	1:200	Drawn By	AK	Checked By	AK	Date	10/08/2008
Project Address	LOT 5001 DELAMERE AVE, CURRUMBINE	Project No.	70.08	Sheet No.	SK18				
10/03/2008		+ COLLARD ARCHITECTS							



FIRST FLOOR PLAN
SCALE 1:200 @ B1



REVISION	DESCRIPTION	DATE	BY	CHKD
1	PROPOSED COMMERCIAL DEVELOPMENT	2008	AK	
2	LOT 5001 DELAMERE AVE, CURRAMBINE	2008	PH	
3		2008	AK	
4		2008	PH	
5		2008	AK	
6		2008	PH	
7		2008	AK	
8		2008	PH	
9		2008	AK	
10		2008	PH	
11		2008	AK	
12		2008	PH	
13		2008	AK	
14		2008	PH	
15		2008	AK	
16		2008	PH	
17		2008	AK	
18		2008	PH	
19		2008	AK	
20		2008	PH	
21		2008	AK	
22		2008	PH	
23		2008	AK	
24		2008	PH	
25		2008	AK	
26		2008	PH	
27		2008	AK	
28		2008	PH	
29		2008	AK	
30		2008	PH	
31		2008	AK	
32		2008	PH	
33		2008	AK	
34		2008	PH	
35		2008	AK	
36		2008	PH	
37		2008	AK	
38		2008	PH	
39		2008	AK	
40		2008	PH	
41		2008	AK	
42		2008	PH	
43		2008	AK	
44		2008	PH	
45		2008	AK	
46		2008	PH	
47		2008	AK	
48		2008	PH	
49		2008	AK	
50		2008	PH	
51		2008	AK	
52		2008	PH	
53		2008	AK	
54		2008	PH	
55		2008	AK	
56		2008	PH	
57		2008	AK	
58		2008	PH	
59		2008	AK	
60		2008	PH	
61		2008	AK	
62		2008	PH	
63		2008	AK	
64		2008	PH	
65		2008	AK	
66		2008	PH	
67		2008	AK	
68		2008	PH	
69		2008	AK	
70		2008	PH	
71		2008	AK	
72		2008	PH	
73		2008	AK	
74		2008	PH	
75		2008	AK	
76		2008	PH	
77		2008	AK	
78		2008	PH	
79		2008	AK	
80		2008	PH	
81		2008	AK	
82		2008	PH	
83		2008	AK	
84		2008	PH	
85		2008	AK	
86		2008	PH	
87		2008	AK	
88		2008	PH	
89		2008	AK	
90		2008	PH	
91		2008	AK	
92		2008	PH	
93		2008	AK	
94		2008	PH	
95		2008	AK	
96		2008	PH	
97		2008	AK	
98		2008	PH	
99		2008	AK	
100		2008	PH	



PROPOSED COMMERCIAL DEVELOPMENT

LOT 5001 DELAMERE AVE, CURRAMBINE





PROPOSED COMMERCIAL DEVELOPMENT

LOT 5001 DELAMERE AVE, CURRAMBINE

Job No. : 70.08 Drawing No. SK15 Date : 10/12/08





PROPOSED COMMERCIAL DEVELOPMENT

LOT 5001 DELAMERE AVE, CURRAMBINE

Job No. : 70.08 Drawing No. SK16 Date : 10/12/08





Figure 1 - Site Plan View of Proposed Development (Lot 5001 to the left).



Figure 2 - View of Proposed Development from Hobsons Gate.



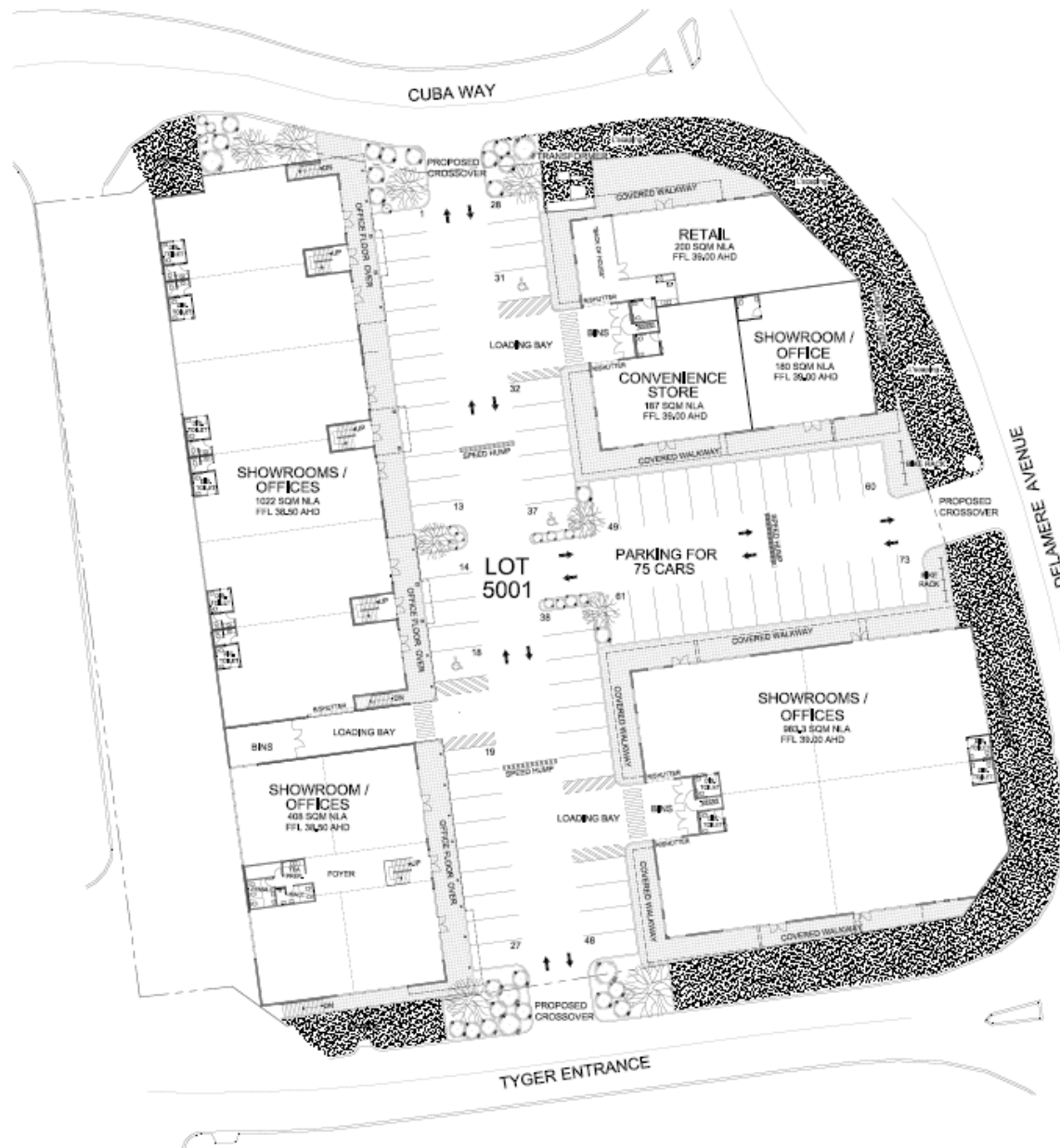
Figure 3 - View of Proposed Development from Tyger Entrance.



Figure 4 - View of Proposed Development from Cuba Way.



Figure 5 - Internal View of Proposed Development facing south-west.



SITE / GROUND FLOOR PLAN
SCALE 1:200



SCHEDULE OF ACCOMMODATION (NLA)	
SHOWROOM / OFFICES	4,117 SQM
RETAIL (1000 BAY AT HOURS)	200 SQM
CONVENIENCE STORE	187 SQM
TOTAL	4504 SQM

LANDSCAPING	451 SQM
-------------	---------

CAR PARKING PROVISIONS	
OFFICE / SHOWROOM	158 CAR BAYS
RETAIL	11 CAR BAYS
CORNER STORE	5 CAR BAYS
TOTAL	174 CAR BAYS

CAR PARKING PROVISIONS	
ON GRADE PARKING	74 CAR BAYS
PROPOSED UNDERGROUND PARKING	88 CAR BAYS
TOTAL	162 CAR BAYS

INTERIM ISSUE ONLY

Project Name	Client	Scale	Drawn By	Check By
PROPOSED COMMERCIAL DEVELOPMENT	Lot 5001	1:200	SK21	SK21
LOT 5001 DELAMERE AVE, CURRUMBINE				
		1:200	11-03-2024	
		70.08	SK21	



SOUTH EVELATION (TYGER ENTRANCE)



WEST ELEVATION (UNDERCROFT CARPARK)



WEST ELEVATION (CUBA WAY)

PROPOSED COMMERCIAL DEVELOPMENT

LOT 5001 DELAMERE AVE, CURRAMBINE





PROPOSED COMMERCIAL DEVELOPMENT

LOT 5001 DELAMERE AVE, CURRAMBINE

Job No. : 70.08 Drawing No. SK23 Date : 12/103/09



**PROPOSED COMMERCIAL DEVELOPMENT
LOT 5001 DELAMERE AVENUE, CURRAMBINE
JOB No 70.08**

PRELIMINARY EXTERNAL COLOUR / FINISHES SCHEDULE

1.0	Building External	
1.1	Feature Wall Sheeting	Lysaght Custom Orb, colour Colorbond Citi Metallic Steel Finish
1.2	Wall Capping	Colorbond, colour Colorbond Citi Metallic Steel Finish
1.3	Steel Framed Canopies	Exterior acrylic paint finish; colour Dulux Sailing Safari P35.B7, Dulux Orange Drop P11.H9, Dulux Butterblond P13.H5
1.4	Steel Columns	Exterior acrylic paint finish; colour Dulux Sailing Safari P35.B7, Dulux Orange Drop P11.H9, Dulux Butterblond P13.H5
1.5	CFC Cladding	Exterior matt acrylic paint finish; colour Dulux Endless Dusk PG1.F3, Dulux Hot Lips P05.H9
1.6	Tilt-up Concrete Panel	High-build textured acrylic paint finish; colour Dulux Nomad P10.D7, Dulux Balsa Stone P15.D3, Dulux Ecu P15.D1
1.7	Feature Tilt-up Concrete Panel with groves	High-build textured acrylic paint finish; colour Ecu P15.D1
1.8	Tilt-up Concrete Panel with 10mm recess	High-build textured acrylic paint finish; colour Dulux Balsa Stone P15.D3, Dulux Hatstand PG1.B6, Dulux Dialogue – PG1.B3
1.9	Window & Door Frames	Powdercoated aluminium finish, colour Dulux Charcoal Met Pearl
1.10	Glazing	Clear and Grey tint
1.11	Feature Cladding	Alucobond Aluminium Cladding, color Ruby 202
1.12	Feature Signage Cladding	Perforated steel mesh on steel frame with powdercoated finish; colour Precious Pewter Pearl
1.13	Soffits to Entries	Dulux Ecu P15.D1 50%