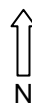


90 Boas Ave, Joondalup WA 6027  
 PO Box 21, Joondalup WA 6919  
 Ph: 08 9400 4000  
 Fax: 08 9300 1383  
 info@joondalup.wa.gov.au  
 www.joondalup.wa.gov.au



Scale(A4):1:8427

Date: 19 January 2011

DISCLAIMER: While every care is taken to ensure the accuracy of this data, the City of Joondalup makes no representations or warranties about its accuracy, completeness or suitability for any particular purpose and disclaims all liability for all expenses, losses, damages and costs which you might incur as a result of the data being inaccurate or incomplete in any way and for any reason.

## TRAILWOOD DRIVE LOCALITY PLAN








JOINS BELOW



JOINS ABOVE

## LEGEND:

-  PROPOSED PAINTED WHITE LINE
-  EXISTING KERBING
-  EXISTING CONCRETE FOOTPATH / CROSSOVER
-  PROPOSED FLUSH 1.2m WIDE RED ASPHALT MEDIAN
-  PROPOSED RAISED MEDIAN ISLANDS

## NOTES:

1. FULL ACCESS TO RESIDENTIAL CROSS OVERS TO BE MAINTAINED.

# TRAILWODD DRIVE TRAFFIC MANAGEMENT CONCEPT PLAN



**CITY OF  
JOONDALUP**