

90 Boas Ave, Joondalup WA 6027
 PO Box 21, Joondalup WA 6919
 Ph: 08 9400 4000
 Fax: 08 9300 1383
 info@joondalup.wa.gov.au
 www.joondalup.wa.gov.au

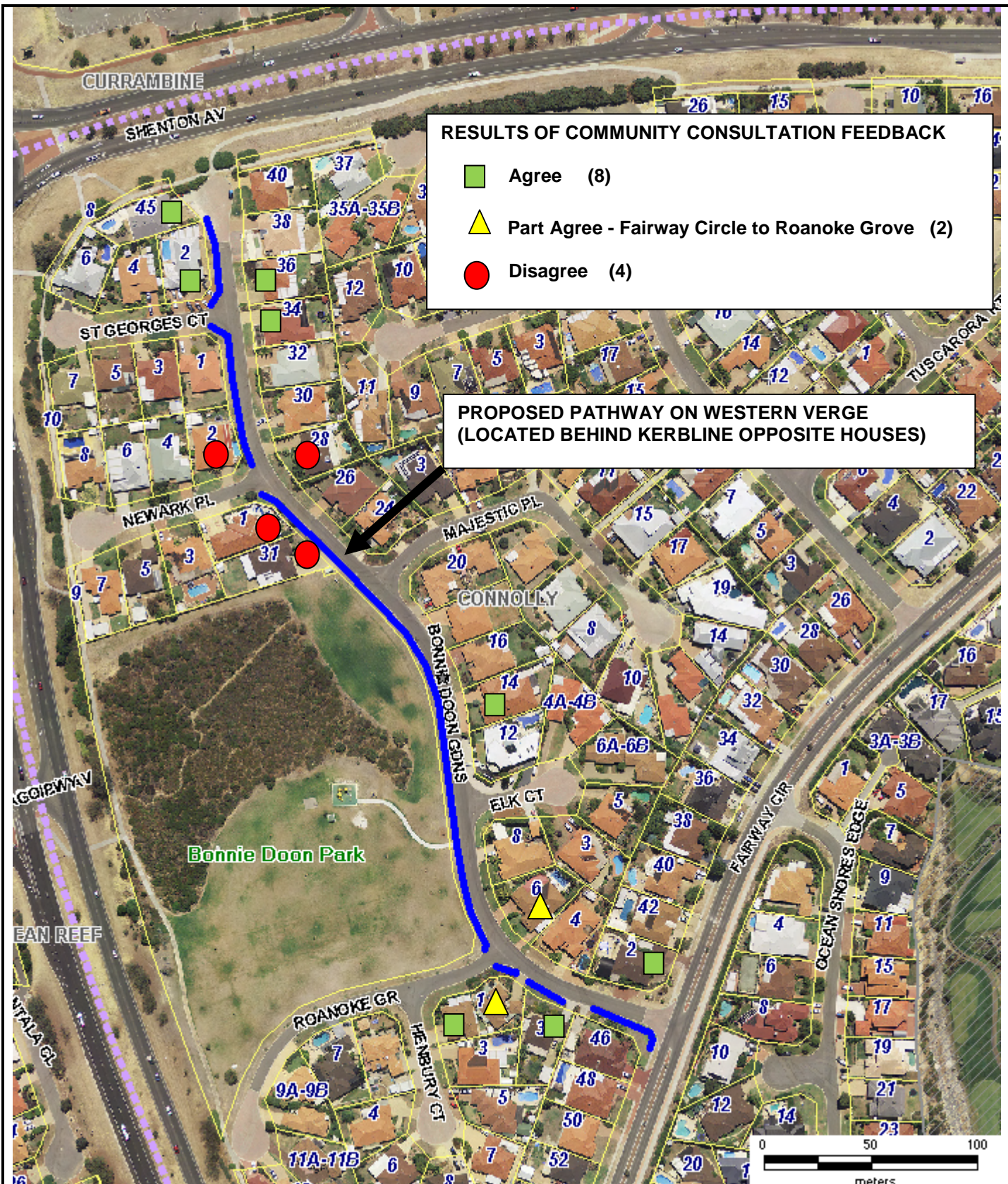


Scale(A4):1:6143

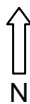
Date: 27 January 2011

DISCLAIMER: While every care is taken to ensure the accuracy of this data, the City of Joondalup makes no representations or warranties about its accuracy, completeness or suitability for any particular purpose and disclaims all liability for all expenses, losses, damages and costs which you might incur as a result of the data being inaccurate or incomplete in any way and for any reason.

BONNIE DOON GARDENS LOCALITY PLAN



90 Boas Ave, Joondalup WA 6027
PO Box 21, Joondalup WA 6919
Ph: 08 9400 4000
Fax: 08 9300 1383
info@joondalup.wa.gov.au
www.joondalup.wa.gov.au



Scale(A4):1:2500

Date: 27 January 2011

DISCLAIMER: While every care is taken to ensure the accuracy of this data, the City of Joondalup makes no representations or warranties about its accuracy, completeness or suitability for any particular purpose and disclaims all liability for all expenses, losses, damages and costs which you might incur as a result of the data being inaccurate or incomplete in any way and for any reason.

**PROPOSED PATH ALIGNMENT
BONNIE DOON GARDENS
CONNOLLY**