**NOTES:-**

1. ALL ACCESS POINTS ON THE STRUCTURE MUST BE BIRD PROOFED AS PER EXTERNAL PLANT POLICY 003615.
2. FOR EME SIGNS NOTED THUS #X REFER TO 005486 FOR DETAILS.
3. UNDERGROUND SERVICES SHOWN ARE APPROXIMATE ONLY. LOCATE ALL UNDERGROUND SERVICES PRIOR TO ANY EXCAVATION WORK.
4. THIS DRAWING SET IS A PRELIMINARY DRAWING ONLY AND IS ISSUED FOR COMMENT. IT IS NOT A DETAILED SURVEY / STRUCTURAL DRAWING AND THEREFORE COULD BE SUBJECT TO CHANGE.



SITE REFERENCE POINT (CENTRE OF MONOPOLE) DERIVED FROM GOOGLE	
LATITUDE (S)	-31.724706 (GDA 94)
LONGITUDE (E)	115.749240 (GDA 94)

FOR APPROVAL

ORDER	DRAWN	CHKD	AMENDMENT	EXAM	APPD	DATE	ISS
W106826	CB	CJH	ISSUED FOR APPROVAL 70255087W02	BD	BD	20.04.11	1
W106826	CN	CN	ADDED ELECTRICAL NOTES 70255087W02	AAS	AAS	20.09.11	2

Telstra

MOBILE NETWORK SITE 259477
CURRAMBINE NORTH
SITE LOCATION AND ACCESS
PTA RAILWAY STATION - CURRAMBINE

DWG NO. W106826

SHT NO. S1 INDEX



aurecon

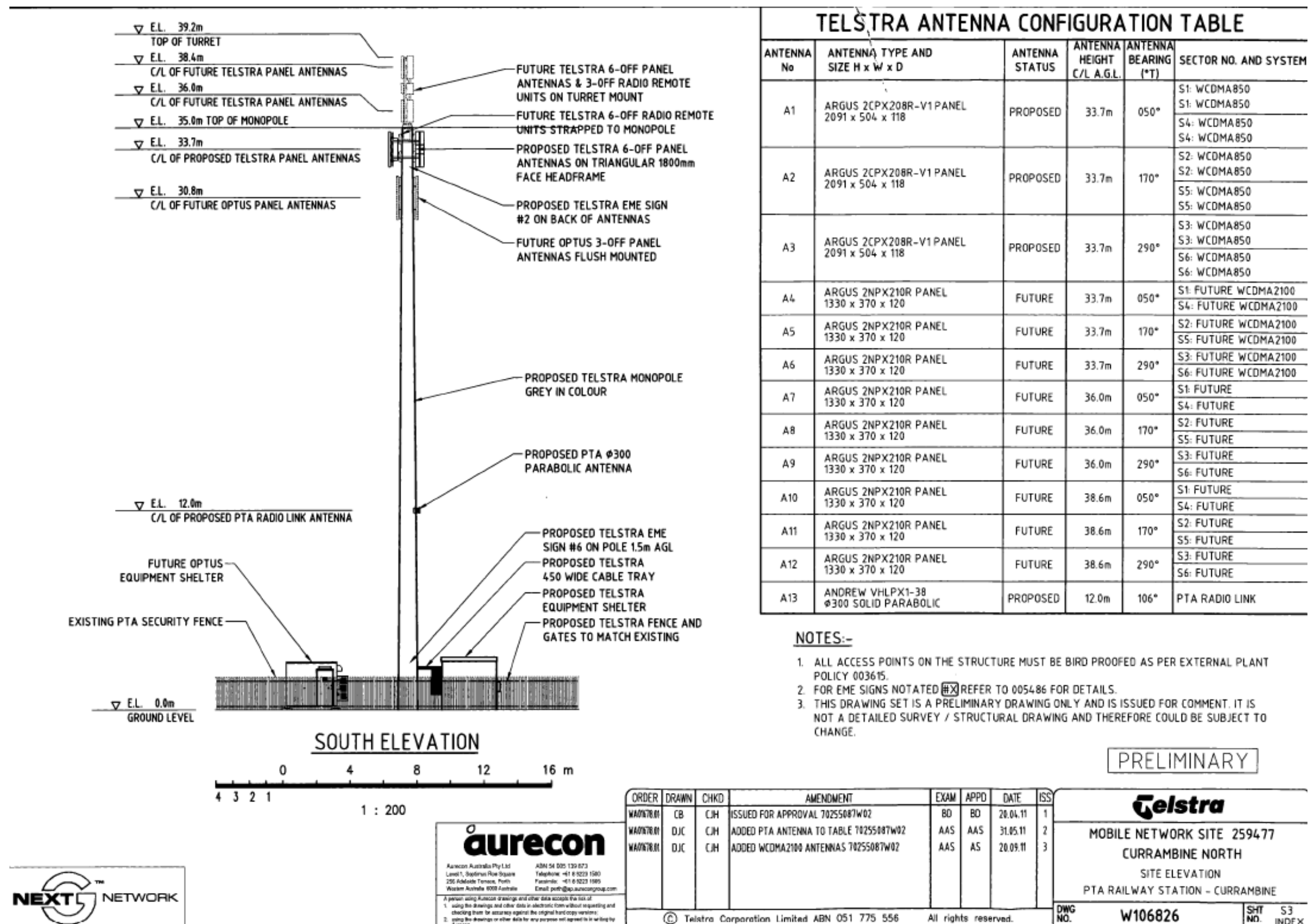
Aurecon Australia Pty Ltd
Level 1, Spectrum Plaza
250 Adelaide Terrace, Perth
Western Australia 6000 Australia

ABN 14 005 139 873
Telephone: +61 8 9223 1500
Facsimile: +61 8 9223 1606
Email: perth@ap.aurecongroup.com

A person using Aurecon drawings and other data accepts the risk of:
1. using the drawings and other data in electronic form without requesting and checking them for accuracy against the original hard copy versions;
2. using the drawings or other data for any purpose not agreed to in writing by Aurecon.

© Telstra Corporation Limited ABN 051 775 556 All rights reserved.







TELECOMMUNICATIONS FACILITIES

STATUS: **City Policy** - A policy that is developed for administrative and operational imperatives and has an internal focus.

Developed by the Policy Committee and/or the administration and adopted by Council.

RESPONSIBLE DIRECTORATE: Planning and Community Development

OBJECTIVE:

STATEMENT:

- 1 The City recognises that it is bound by the Federal legislation relating to telecommunication facilities and that it has no jurisdiction over the location or installation of "low impact" facilities as defined under the *Telecommunications (Low-Impact Facilities) Determination Act 1997*.
- 2 The City, as a general rule, does not support the installation or location of telecommunication facilities, particularly in the vicinity of schools, childcare establishments, hospitals and general residential areas.
- 3 The City recognises the right of land owners/applicants to make applications for planning approval for telecommunication facilities deemed to be other than low impact under the *Telecommunications Act*, and acknowledges its obligation to make a recommendation to the WAPC or determine the application in its own right.
- 4 Having received a Development Application for a telecommunication facility, the City will advertise the proposal for a 30-day period and consult with the local community surrounding the proposed site. Owners and occupiers of property within a radius of 500m will be advised in writing, at the cost of the applicant, and afforded an opportunity to make comment to the Council prior to the matter being considered at a Council meeting.
- 5 In making a recommendation to the WAPC or determining the application the Council will have regard to;
 - (a) the comments and concerns of the local community,
 - (b) the merits of the particular proposal
 - (c) compliance with the industry code of practice,
 - (d) compliance with matters required to be considered under the District Planning Scheme, and
 - (e) the general concerns of the Council regarding the potential effects of telecommunication facilities referred to in point 2 above.



Amendments: C172-12/02. CJ206-10/05 CJ207-10/07

Related Documentation:

Issued: October 2007

