

LAYER 1 - SPORT COMPONENT

- 1 MULTI-PURPOSE POOL (OUTDOOR) AND PLANT
- 2 ADDITIONAL CAR PARKING - APPROX. 120 BAYS
- 3 WEST PERTH - HIGH PERFORMANCE
- 4 WEST PERTH - HIGH PERFORMANCE (ALTERNATE OPTION)

LAYER 2 - COMMUNITY COMPONENT

- 5 ADDITIONAL AMENITIES (OUTDOOR HOCKEY AND NETBALL)
- 6 BASKETBALL AMENITIES - REFER TO SK02 (4 TEAM CHANGEROOMS, PUBLIC TOILET, 4 CLUB OFFICES)
- 7 HIGHBALL COURT FACILITIES (4 COURTS)
- 8 ADDITIONAL CAR PARKING - APPROX. 320 BAYS
- 9 TWO RECTANGULAR PITCHES
- 10 OUTDOOR INTERACTIVE WATER PLAY
- 11 ADMINISTRATION EXPANSION - REFER TO SK02
- 12 CRECHE EXPANSION - REFER TO SK02
- 13 STORAGE - REFER TO SK02
- 14 NETBALL COURTS

LAYER 3 - COMMERCIAL COMPONENT

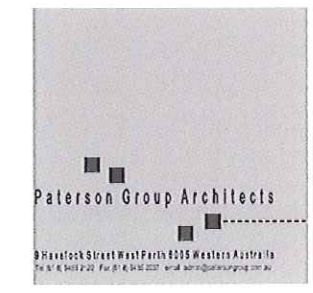
- 15 GYMNASIUM EXPANSION - REFER TO SK03
- 16 LONG DAY CARE AND OUTDOOR AREA
- 17 ENTRY MODIFICATION, NEW STAIRS AND RETAIL SHOP - REFER TO SK02
- 18 TWO LARGE PROGRAM ROOMS AND SPIN ROOM SPACE - REFER TO SK03
- 19 OFFICE SPACE AND STORAGE - REFER TO SK03
- 20 CONSULTING ROOMS - REFER TO SK03
- 21 ADDITIONAL CONCESSION OUTLETS
- 22 COMMERCIAL DEVELOPMENT AND ASSOCIATED PARKING
 - 260 BAYS WILL PROVIDE 7,800m² NLA OFFICE SPACE
 - 160 BAYS WILL PROVIDE 4,800m² NLA OFFICE SPACE
- 23 MEMBER RECEPTION AREA - REFER TO SK03

CONCEPT ONLY FOR DISCUSSION

coffey sport and leisure
DEVELOPMENT CONCEPT

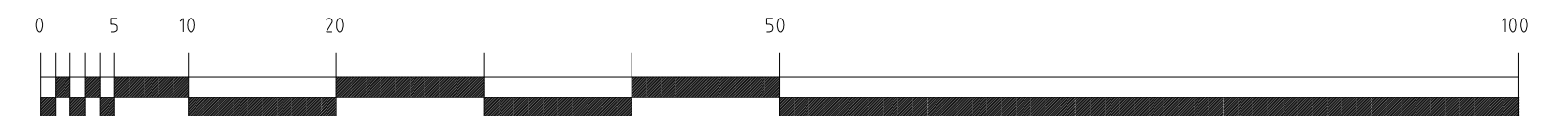
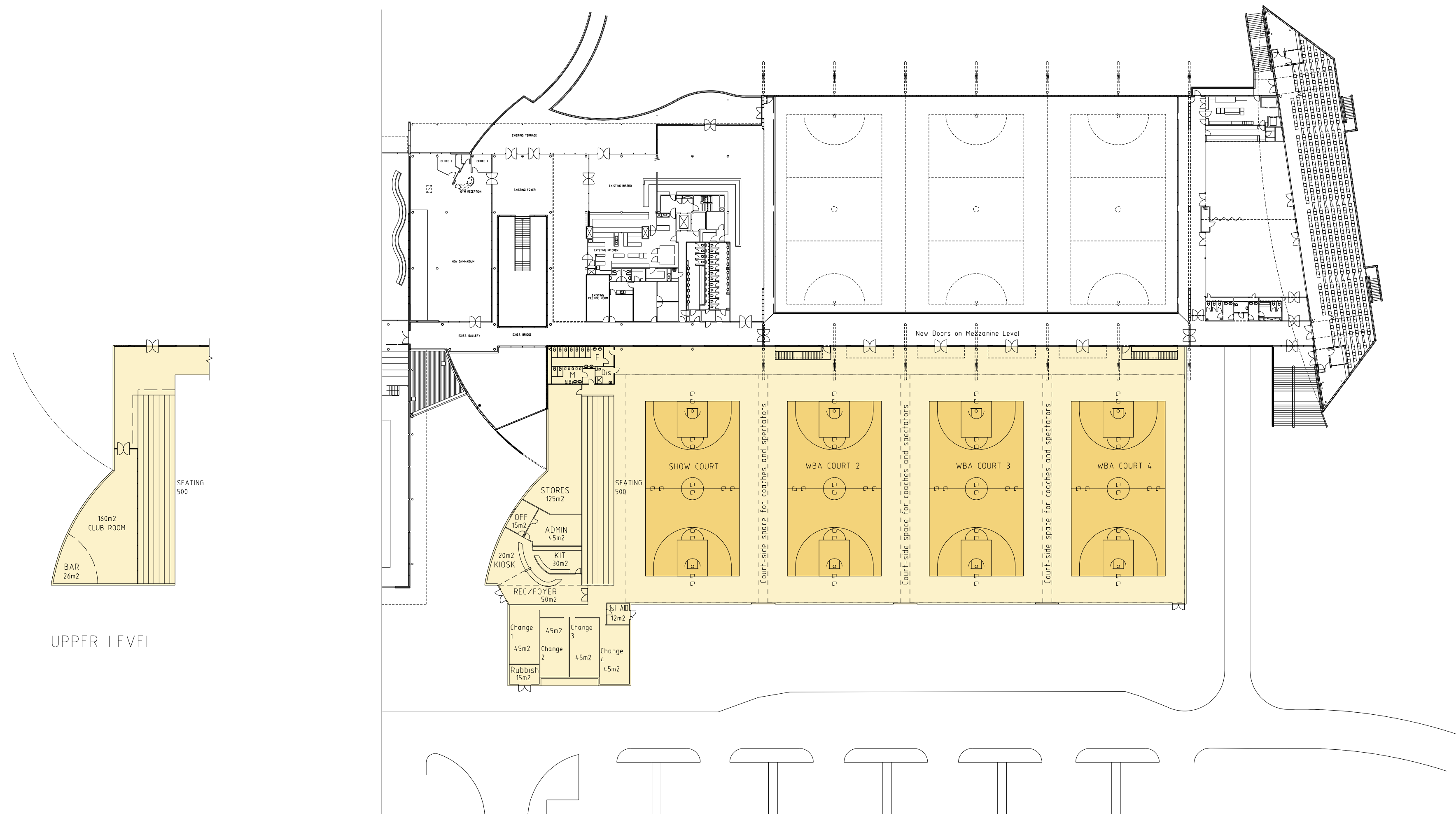
master planning
kennedy drive, joondalup

masterplan



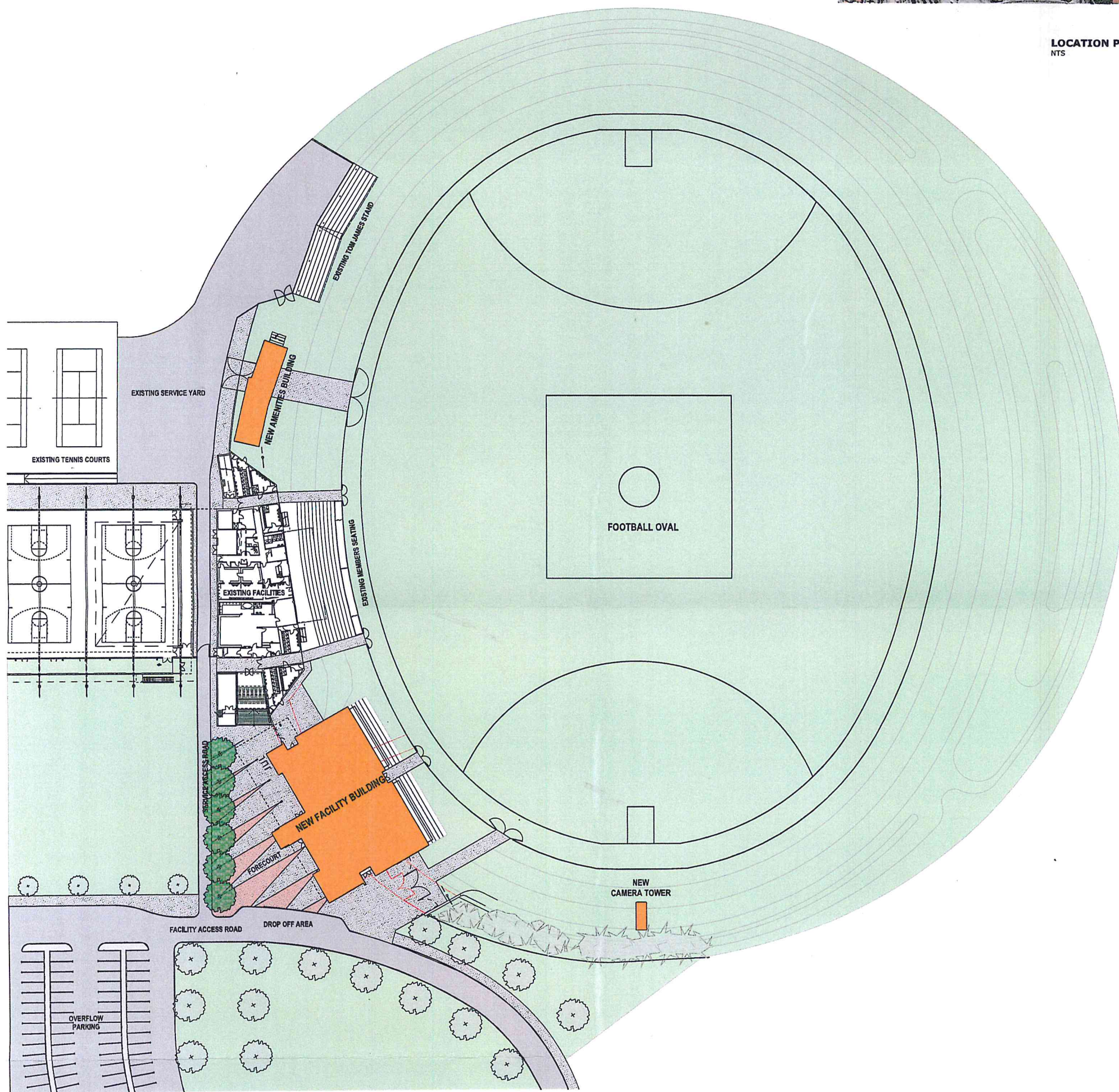
scale: 1:1000 @ A1, 1:2000 @ A3

job no: 11-134
date: feb 2012
Sk 01 rev D
1/08/2012 3:57:13 PM, Paterson Group Architects





LOCATION PLAN
NTS



LOCATION PLAN
1:500



FORECOURT ENTRY VIEW



VIEW FROM NORTH



VIEW FROM SOUTH



PANORAMA