

LEGEND

EDGE OF ROAD: NO EXISTING KERB	CONCRETE: 'PORCELAIN'
EXISTING TREE	CONCRETE: 'MACADAMIA'
PROPOSED TREE	CONCRETE: 'BISCUIT'
PLANTING: FORMAL BANDS	CONCRETE: 'TOBACCO'
PLANTING: INFORMAL MOSAIC	CONCRETE: 'LIZARD SKIN'

City of Joondalup

INFRASTRUCTURE MANAGEMENT SERVICES

LANDSCAPE & CONSERVATION SERVICES

TITLE: WHITFORDS AVENUE STREETSCAPE ENHANCEMENT

ZONE 01: BELROSE ENT - MARMION AVE

LOCALITY: HILLARYS	PROJECT CODE: SSE 1040	FILE: 102926
SCALE: 1:500 @ A1	DESIGN / DRAWN BY: NB / NB	DATE: 18 / 03 / 2014



LEGEND

	EDGE OF ROAD: NO EXISTING KERB		CONCRETE: 'PORCELAIN'
	EXISTING TREE		CONCRETE: 'MACADAMIA'
	PROPOSED TREE		CONCRETE: 'BISCUIT'
	PLANTING: FORMAL BANDS		CONCRETE: 'TOBACCO'
	PLANTING: INFORMAL MOSAIC		CONCRETE: 'LIZARD SKIN'

City of Joondalup

INFRASTRUCTURE MANAGEMENT SERVICES

LANDSCAPE & CONSERVATION SERVICES

TITLE: **WHITFORDS AVENUE
STREETSCAPE ENHANCEMENT**

ZONE 02a: MARMION AVE - EDDYSTONE AVE

LOCALITY: PADBURY	PROJECT CODE: SSE 2040	FILE: 102926
SCALE: 1:500 @ A1	DESIGN / DRAWN BY: NB / NB	DATE: 18 / 03 / 2014



LEGEND

EDGE OF ROAD:
NO EXISTING KERB

EXISTING TREE

PROPOSED TREE

PLANTING:
FORMAL BANDS

PLANTING:
INFORMAL MOSAIC

CONCRETE:
'PORCELAIN'

CONCRETE:
'MACADAMIA'

CONCRETE:
'BISCUIT'

CONCRETE:
'TOBACCO'

CONCRETE:
'LIZARD SKIN'

City of Joondalup

INFRASTRUCTURE MANAGEMENT SERVICES

LANDSCAPE & CONSERVATION SERVICES

TITLE:
**WHITFORDS AVENUE
STREETSCAPE ENHANCEMENT**

ZONE 02b: MARMON AVE - EDDYSTONE AVE

LOCALITY:
PADBURY

PROJECT CODE:
SSE 1040

FILE:
102926

SCALE:
1:500 @ A1

DESIGN / DRAWN BY:
NB / NB

DATE:
18 / 03 / 2014



LEGEND			
	EDGE OF ROAD: NO EXISTING KERB		CONCRETE: 'PORCELAIN'
	EXISTING TREE		CONCRETE: 'MACADAMIA'
	PROPOSED TREE		CONCRETE: 'BISCUIT'
	PLANTING: FORMAL BANDS		CONCRETE: 'TOBACCO'
	PLANTING: INFORMAL MOSAIC		CONCRETE: 'LIZARD SKIN'



INFRASTRUCTURE MANAGEMENT SERVICES
LANDSCAPE & CONSERVATION SERVICES

TITLE:
WHITFORDS AVENUE
STREETSCAPE ENHANCEMENT

ZONE 03b: EDDYSTONE AVE - FREEWAY

LOCALITY: PADBURY	PROJECT CODE: SSE 2040	FILE: 102926
SCALE: 1:500 @ A1	DESIGN / DRAWN BY: NB / NB	DATE: 18 / 03 / 2014



LEGEND

	EDGE OF ROAD: NO EXISTING KERB		CONCRETE: 'PORCELAIN'
	EXISTING TREE		CONCRETE: 'MACADAMIA'
	PROPOSED TREE		CONCRETE: 'BISCUIT'
	PLANTING: FORMAL BANDS		CONCRETE: 'TOBACCO'
	PLANTING: INFORMAL MOSAIC		CONCRETE: 'LIZARD SKIN'

City of Joondalup

INFRASTRUCTURE MANAGEMENT SERVICES

LANDSCAPE & CONSERVATION SERVICES

TITLE:

**WHITFORDS AVENUE
STREETSCAPE ENHANCEMENT**

ZONE 03c: EDDYSTONE AVE - FREEWAY

LOCALITY: PADBURY	PROJECT CODE: SSE 2040	FILE: 102926
SCALE: 1:500 @ A1	DESIGN / DRAWN BY: NB / NB	DATE: 18 / 03 / 2014



ADJOINS ZONE 04
CONCEPT PLAN B

LEGEND

EDGE OF ROAD:
NO EXISTING KERB

EXISTING TREE

PROPOSED TREE

PLANTING:
FORMAL BANDS

PLANTING:
INFORMAL MOSAIC

CONCRETE:
'PORCELAIN'

CONCRETE:
'MACADAMIA'

CONCRETE:
'BISCUIT'

CONCRETE:
'TOBACCO'

CONCRETE:
'LIZARD SKIN'

City of Joondalup

INFRASTRUCTURE MANAGEMENT SERVICES

LANDSCAPE & CONSERVATION SERVICES

TITLE:
WHITFORDS AVENUE
STREETSCAPE ENHANCEMENT

ZONE 04a: FREEWAY - TRAPPERS DR

LOCALITY:
KINGSLEY

PROJECT CODE:
SSE 2040

FILE:
102926

SCALE:
1:500 @ A1

DESIGN / DRAWN BY:
NB / NB

DATE:
18 / 03 / 2014



LEGEND

	EDGE OF ROAD: NO EXISTING KERB		CONCRETE: 'PORCELAIN'
	EXISTING TREE		CONCRETE: 'MACADAMIA'
	PROPOSED TREE		CONCRETE: 'BISCUIT'
	PLANTING: FORMAL BANDS		CONCRETE: 'TOBACCO'
	PLANTING: INFORMAL MOSAIC		CONCRETE: 'LIZARD SKIN'

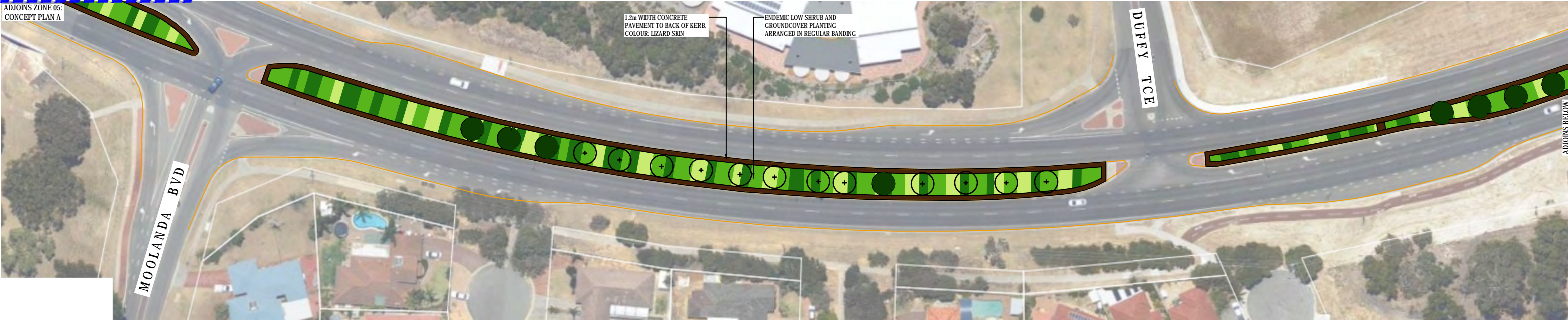
INFRASTRUCTURE MANAGEMENT SERVICES

LANDSCAPE & CONSERVATION SERVICES

TITLE: **WHITFORDS AVENUE
STREETSCAPE ENHANCEMENT**

ZONE 05a: TRAPPERS DR - WANNEROO RD

LOCALITY: KINGSLEY	PROJECT CODE: SSE 2040	FILE: 102926
SCALE: 1:500 @ A1	DESIGN / DRAWN BY: NB / NB	DATE: 18 / 03 / 2014



LEGEND

EDGE OF ROAD:
NO EXISTING KERB

EXISTING TREE

PROPOSED TREE

PLANTING:
FORMAL BANDS

PLANTING:
INFORMAL MOSAIC

CONCRETE:
'PORCELAIN'

CONCRETE:
'MACADAMIA'

CONCRETE:
'BISCUIT'

CONCRETE:
'TOBACCO'

CONCRETE:
'LIZARD SKIN'

City of Joondalup

INFRASTRUCTURE MANAGEMENT SERVICES

LANDSCAPE & CONSERVATION SERVICES

TITLE:

WHITFORDS AVENUE
STREETSCAPE ENHANCEMENT

ZONE 05b: TRAPPERS DR - WANNEROO RD

LOCALITY:

KINGSLEY

PROJECT CODE:

SSE 1040

FILE:

102926

SCALE:

1:500 @ A1

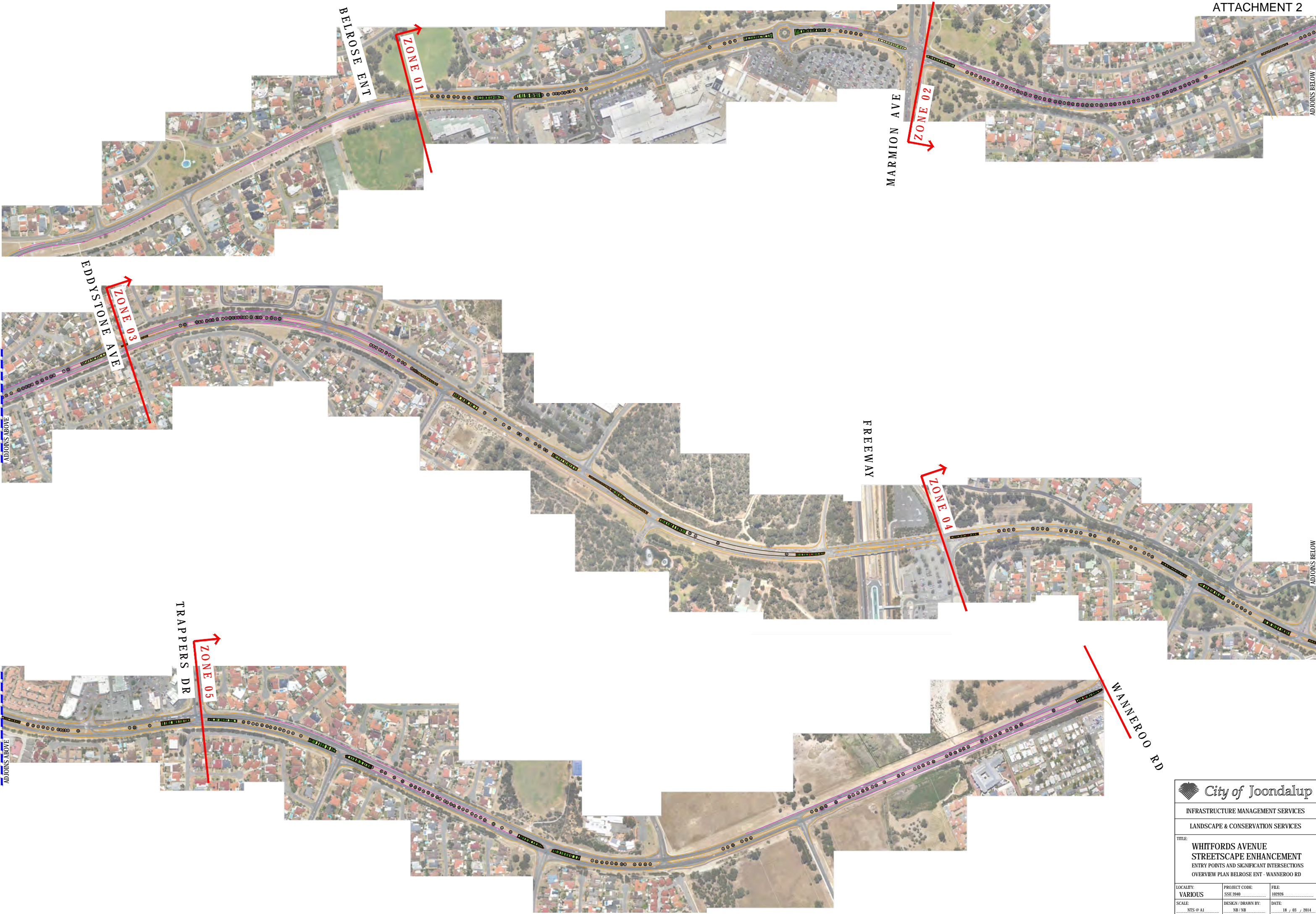
DESIGN / DRAWN BY:

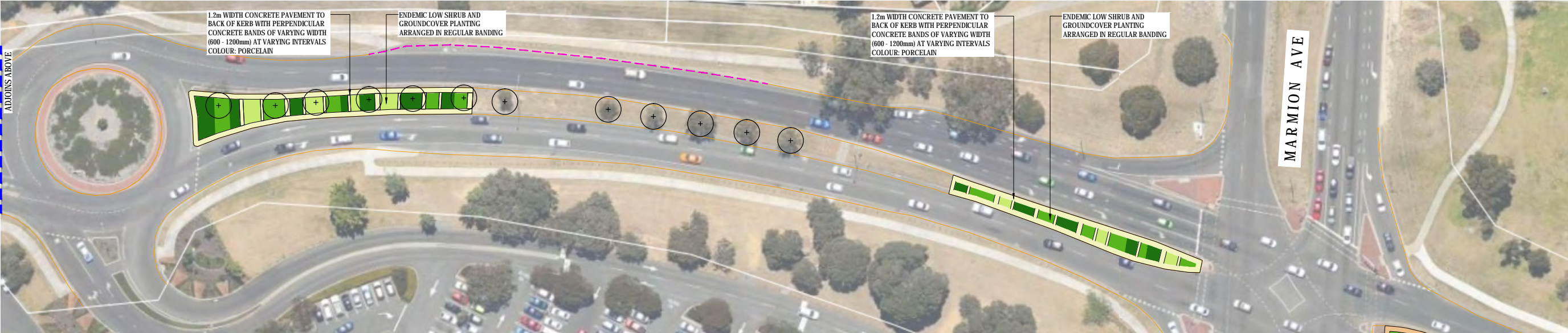
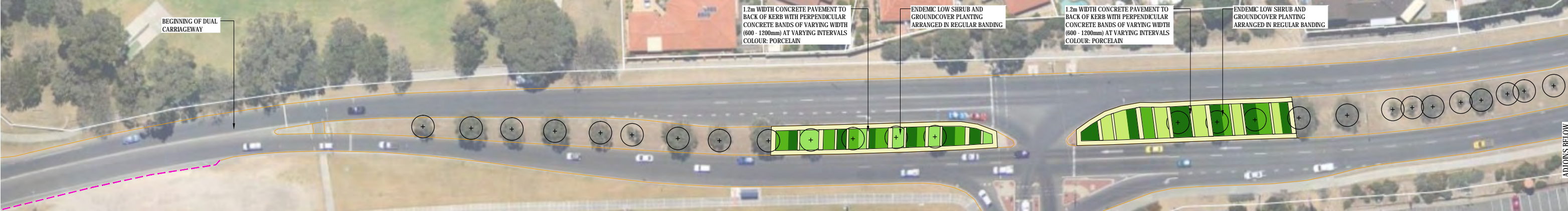
NB / NB

DATE:

18 / 03 / 2014







LEGEND

	EDGE OF ROAD: NO EXISTING KERB		CONCRETE: 'PORCELAIN'
	EXISTING TREE		CONCRETE: 'MACADAMIA'
	PLANTING: FORMAL BANDS		CONCRETE: 'BISCUIT'
			CONCRETE: 'TOBACCO'
			CONCRETE: 'LIZARD SKIN'

CITY OF JOONDALUP

INFRASTRUCTURE MANAGEMENT SERVICES

LANDSCAPE & CONSERVATION SERVICES

TITLE:

WHITFORDS AVENUE

STREETSCAPE ENHANCEMENT

ENTRY POINTS AND SIGNIFICANT INTERSECTIONS

ZONE 01: BELROSE ENT - MARMION AVE

LOCALITY:	PROJECT CODE:	FILE:
HILLARYS	SSE 2040	102926
SCALE:	DESIGN / DRAWN BY:	DATE:
1:500 @ A1	NB / NB	18 / 03 / 2014



LEGEND

	EDGE OF ROAD: NO EXISTING KERB		CONCRETE: 'PORCELAIN'
	EXISTING TREE		CONCRETE: 'MACADAMIA'
	PLANTING: FORMAL BANDS		CONCRETE: 'BISCUIT'
			CONCRETE: 'TOBACCO'
			CONCRETE: 'LIZARD SKIN'

INFRASTRUCTURE MANAGEMENT SERVICES

LANDSCAPE & CONSERVATION SERVICES

TITLE:

WHITFORDS AVENUE

STREETSCAPE ENHANCEMENT

ENTRY POINTS AND SIGNIFICANT INTERSECTIONS

ZONE 02a: MARMION AVE - EDDYSTONE AVE

LOCALITY:	PROJECT CODE:	FILE:
PADBURY	SSE 2040	102926
SCALE:	DESIGN / DRAWN BY:	DATE:
1:500 @ A1	NB / NB	18 / 03 / 2014



LEGEND

EDGE OF ROAD: NO EXISTING KERB

EXISTING TREE

PLANTING: FORMAL BANDS

CONCRETE: 'PORCELAIN'

CONCRETE: 'MACADAMIA'

CONCRETE: 'BISCUIT'

CONCRETE: 'TOBACCO'

CONCRETE: 'LIZARD SKIN'

City of Joondalup

INFRASTRUCTURE MANAGEMENT SERVICES

LANDSCAPE & CONSERVATION SERVICES

TITLE:
**WHITFORDS AVENUE
STREETSCAPE ENHANCEMENT**
ENTRY POINTS AND SIGNIFICANT INTERSECTIONS
ZONE 03a: EDDYSTONE AVE - FREEWAY

LOCALITY:
PADBURY

PROJECT CODE:
SSE 2040

FILE:
102926

SCALE:
1:500 @ A1

DESIGN / DRAWN BY:
NB / NB

DATE:
18 / 03 / 2014

ADJOINS ZONE 03:
CONCEPT PLAN B



LEGEND		
	EDGE OF ROAD: NO EXISTING KERB	CONCRETE: 'PORCELAIN'
	EXISTING TREE	CONCRETE: 'MACADAMIA'
	PLANTING: FORMAL BANDS	CONCRETE: 'BISCUIT'
		CONCRETE: 'TOBACCO'
		CONCRETE: 'LIZARD SKIN'



INFRASTRUCTURE MANAGEMENT SERVICES
LANDSCAPE & CONSERVATION SERVICES

TITLE:
**WHITFORDS AVENUE
STREETSCAPE ENHANCEMENT**
ENTRY POINTS AND SIGNIFICANT INTERSECTIONS
ZONE 03b: EDDYSTONE AVE - FREEWAY

LOCALITY: PADBURY	PROJECT CODE: SSE 2040	FILE: 102926
SCALE: 1:500 @ A1	DESIGN / DRAWN BY: NB / NB	DATE: 18 / 03 / 2014



LEGEND

EDGE OF ROAD:
NO EXISTING KERB

EXISTING TREE

PLANTING:
FORMAL BANDS


CONCRETE:
'PORCELAIN'

CONCRETE:
'MACADAMIA'

CONCRETE:
'BISCUIT'

CONCRETE:
'TOBACCO'

CONCRETE:
'LIZARD SKIN'

 **City of Joondalup**

INFRASTRUCTURE MANAGEMENT SERVICES

LANDSCAPE & CONSERVATION SERVICES

TITLE:
**WHITFORDS AVENUE
STREETSCAPE ENHANCEMENT**
ENTRY POINTS AND SIGNIFICANT INTERSECTIONS
ZONE 03c: EDDYSTONE AVE - FREEWAY

LOCALITY:
PADBURY

PROJECT CODE:
SSE 2040

FILE:
102926

SCALE:
1:500 @ A1

DESIGN / DRAWN BY:
NB / NB

DATE:
18 / 03 / 2014



LEGEND

	EDGE OF ROAD: NO EXISTING KERB		CONCRETE: 'PORCELAIN'
	EXISTING TREE		CONCRETE: 'MACADAMIA'
	PLANTING: FORMAL BANDS		CONCRETE: 'BISCUIT'
			CONCRETE: 'TOBACCO'
			CONCRETE: 'LIZARD SKIN'

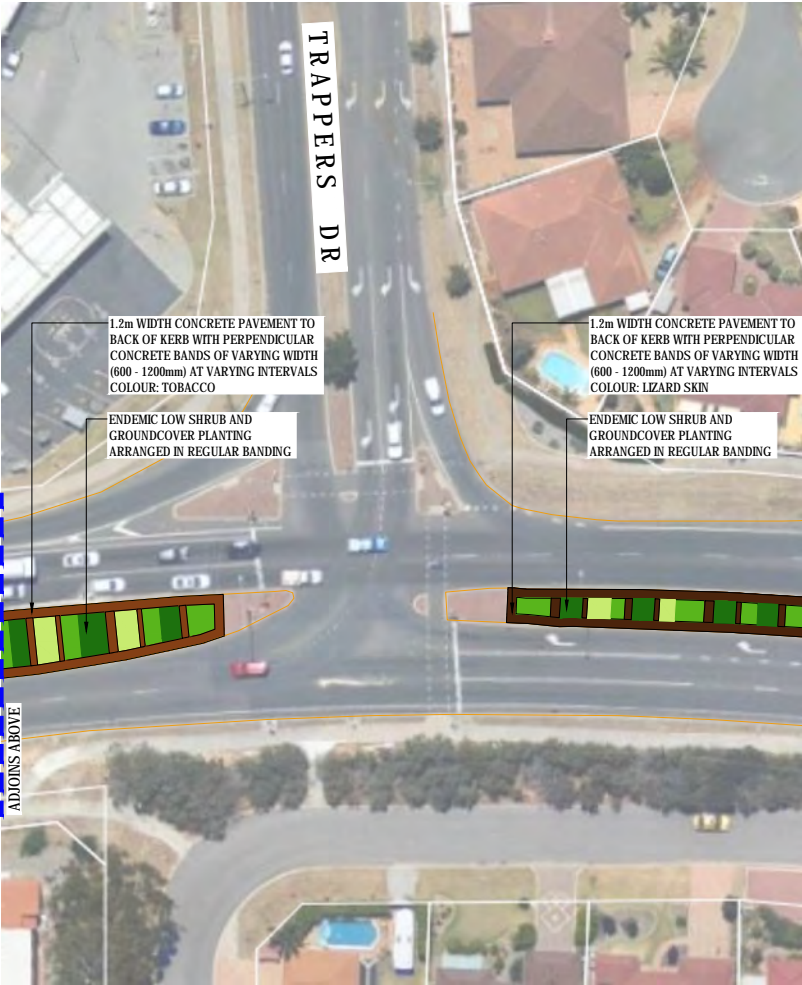
City of Joondalup

INFRASTRUCTURE MANAGEMENT SERVICES

LANDSCAPE & CONSERVATION SERVICES

TITLE: **WHITFORDS AVENUE**
STREETSCAPE ENHANCEMENT
ENTRY POINTS AND SIGNIFICANT INTERSECTIONS
ZONE 04a: FREEWAY - TRAPPERS DR

LOCALITY: KINGSLEY	PROJECT CODE: SSE 2040	FILE: 102926
SCALE: 1:500 @ A1	DESIGN / DRAWN BY: NB / NB	DATE: 18 / 03 / 2014



LEGEND

	EDGE OF ROAD: NO EXISTING KERB		CONCRETE: 'PORCELAIN'
	EXISTING TREE		CONCRETE: 'MACADAMIA'
	PLANTING: FORMAL BANDS		CONCRETE: 'BISCUIT'
			CONCRETE: 'TOBACCO'
			CONCRETE: 'LIZARD SKIN'

City of Joondalup

INFRASTRUCTURE MANAGEMENT SERVICES

LANDSCAPE & CONSERVATION SERVICES

TITLE: **WHITFORDS AVENUE**
STREETSCAPE ENHANCEMENT
ENTRY POINTS AND SIGNIFICANT INTERSECTIONS
ZONE 04b: FREEWAY - TRAPPERS DR

LOCALITY: KINGSLEY	PROJECT CODE: SSE 2040	FILE: 102926
SCALE: 1:500 @ A1	DESIGN / DRAWN BY: NB / NB	DATE: 18 / 03 / 2014



LEGEND

EDGE OF ROAD: NO EXISTING KERB

EXISTING TREE

PLANTING: FORMAL BANDS

CONCRETE: 'PORCELAIN'

CONCRETE: 'MACADAMIA'

CONCRETE: 'BISCUIT'

CONCRETE: 'TOBACCO'

CONCRETE: 'LIZARD SKIN'

City of Joondalup

INFRASTRUCTURE MANAGEMENT SERVICES

LANDSCAPE & CONSERVATION SERVICES

TITLE:
**WHITFORDS AVENUE
STREETSCAPE ENHANCEMENT**
ENTRY POINTS AND SIGNIFICANT INTERSECTIONS
ZONE 05a: TRAPPERS DR - WANNEROO RD

LOCALITY:
KINGSLEY

PROJECT CODE:
SSE 2040

FILE:
102926

SCALE:
1:500 @ A1

DESIGN / DRAWN BY:
NB / NB

DATE:
18 / 03 / 2014

ADJOINS ZONE 05:
CONCEPT PLAN A



LEGEND			
	EDGE OF ROAD: NO EXISTING KERB		CONCRETE: 'PORCELAIN'
	EXISTING TREE		CONCRETE: 'MACADAMIA'
	PLANTING: FORMAL BANDS		CONCRETE: 'BISCUIT'
			CONCRETE: 'TOBACCO'
			CONCRETE: 'LIZARD SKIN'

City of Joondalup









INFRASTRUCTURE MANAGEMENT SERVICES

LANDSCAPE & CONSERVATION SERVICES

TITLE:
**WHITFORDS AVENUE
STREETSCAPE ENHANCEMENT**
ENTRY POINTS AND SIGNIFICANT INTERSECTIONS
ZONE 05b: TRAPPERS DR - WANNEROO RD

LOCALITY: KINGSLEY	PROJECT CODE: SSE 2040	FILE: 102926
SCALE: 1:500 @ A1	DESIGN / DRAWN BY: NB / NB	DATE: 18 / 03 / 2014



LEGEND			
	EDGE OF ROAD: NO EXISTING KERB		CONCRETE: 'PORCELAIN'
	EXISTING TREE		CONCRETE: 'MACADAMIA'
	PLANTING: FORMAL BANDS		CONCRETE: 'BISCUIT'
			CONCRETE: 'TOBACCO'
			CONCRETE: 'LIZARD SKIN'

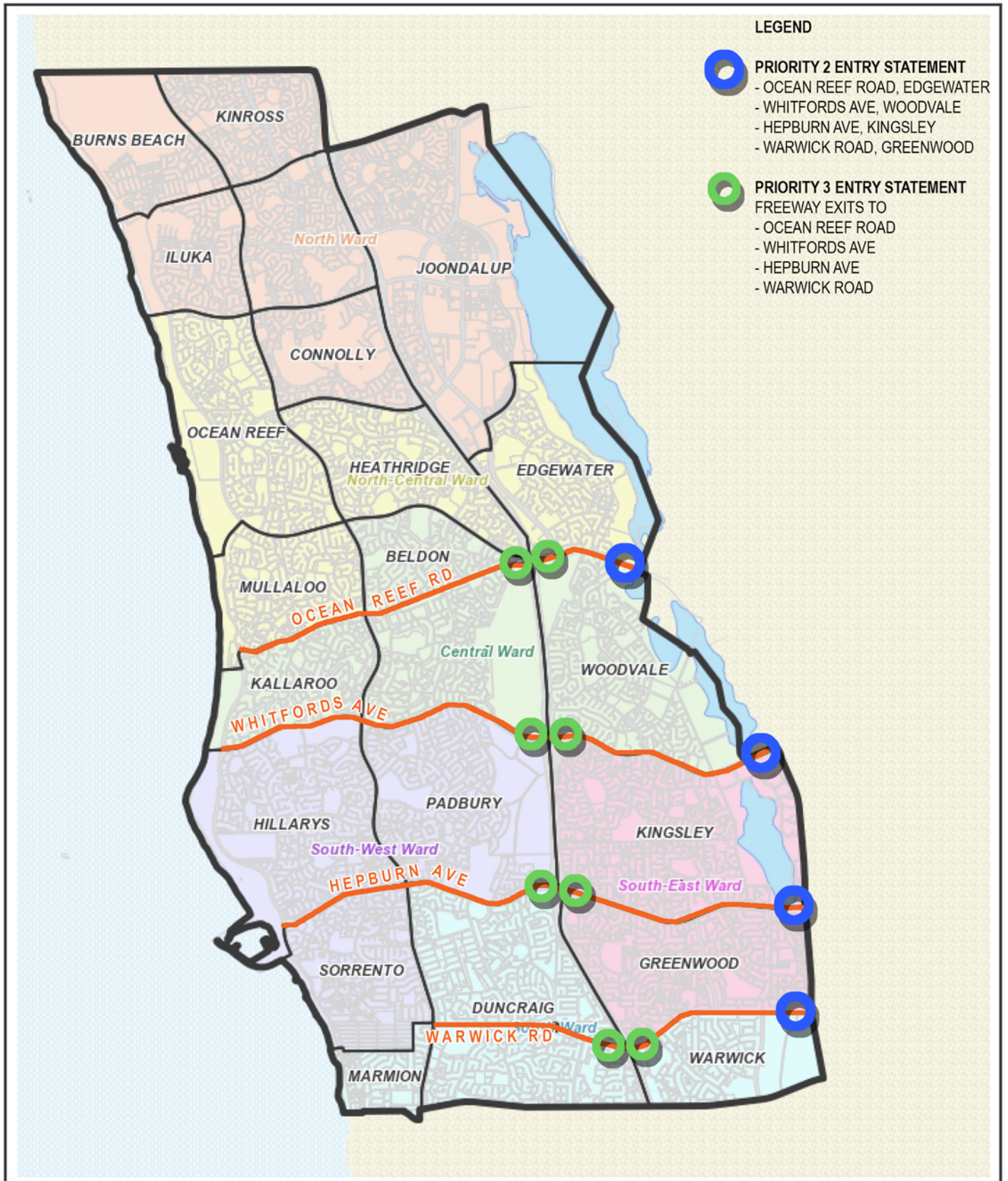
City of Joondalup

INFRASTRUCTURE MANAGEMENT SERVICES

LANDSCAPE & CONSERVATION SERVICES

TITLE:
**WHITFORDS AVENUE
STREETSCAPE ENHANCEMENT**
ENTRY POINTS AND SIGNIFICANT INTERSECTIONS
ZONE 05c: TRAPPERS DR - WANNEROO RD

LOCALITY: KINGSLEY	PROJECT CODE: SSE 2040	FILE: 102926
SCALE: 1:500 @ A1	DESIGN / DRAWN BY: NB / NB	DATE: 18 / 03 / 2014





LEVEL 1 - PROVENANCE PLANTING IN CONCRETE BANDED GARDEN BEDS WITH ENTRY STATEMENT SIGNAGE



LEVEL 2 - PROVENANCE PLANTING IN CONCRETE BANDED GARDEN BEDS

PROPOSED LANDSCAPE TREATMENT LEVELS
CITY OF JOONDALUP



LEVEL 3 - PROVENANCE SHRUB / TREE PLANTING WITH CONCRETE BANDING TO BACK OF KERB ONLY



LEVEL 4 - TREE PLANTING WITH CONCRETE BANDING TO BACK OF KERB ONLY



LEVEL 5 - PROVENANCE SHRUB / TREE PLANTING TO MEDIAN WITH NO EXISTING KERBING



LEVEL 6 - TREE PLANTING TO MEDIAN WITH NO EXISTING KERBING



LEVEL 7 - DRY TUBE STOCK PLANTING TO MEDIAN WITH NO EXISTING KERBING AND NO ACCESS TO WATER



LEVEL 8 - MAINTENANCE REFURBISHMENT TO EXISTING DRY GRASS