

Warrandyte Park – Joondalup United Football Club Meeting Notes



ATTACHMENT 1

Project Name	Warrandyte Park, Craigie		
Date	2 Nov 2016	Time of meeting	4.00pm – 5.30pm
Location	City of Joondalup, Administration Building	Chairperson	Garry Hunt
Attendees	City of Joondalup (CoJ) <ul style="list-style-type: none"> • Garry Hunt (GH) – Chief Executive Officer • Mike Smith (MS) – A/Director Corporate Services • Rohan Klemm (RK) – A/Manager Leisure and Cultural Services • Shane Fraser – (SF) A/Recreation Services Coordinator Joondalup United Football Club (JUFC) <ul style="list-style-type: none"> • John Stone (JS) – President • Stephen Martin (SM) • Rudy Proctor (RP) 		

Notes confirmed 10/11/2016 by John Stone (EIN16/14360)

Intro

- GH provided intro to meeting and expected outcome being that JUFC leave with an opportunity to put all issues and options on the table for consideration and for CoJ to ask all questions.
- CoJ will be meeting with Whitford City Football Club and other stakeholders over the next week before the Community Forum with a date and time to be set
- GH indicated that the proposed Community Forum is an opportunity for the community/local residents to have their say, it's not a forum for clubs and stakeholder groups

JUFC Current Situation

- Currently utilise four parks
 - Prince Regent Park (junior training and games & State League training)
 - Beldon Park (Amateur and Masters training, Amateurs games)
 - Charonia Park (Masters games)
 - Forrest Park (State League games)
- JUFC operate three tills and three canteen/bars at Beldon, Charonia and Forrest
- Three NPL sides (League, Reserves & U/18's)
- Four Amateur sides
- Four Masters sides
- Approx 20 junior sides
- JUFC expect Jrs to grow significantly in 2017 with recent NPL promotion (now running NPL junior program)
- JUFC operate two sections of their club
 - Elite – NPL Seniors and NPL Juniors
 - Community – Amateurs, Masters, Juniors

Facility Options

- MS asked JUFC about opportunity to share Warrandyte Park with WCFC (JUFC to operate NPL on Saturdays)
- RP advised the club's focus is on finding a "home" facility. A venue where their senior teams can play from. This would require a suitable clubroom and two full size pitches
 - 2 amateur teams and 2 masters teams play alternating Sunday afternoons
- NPL games could be played elsewhere if necessary, although not the club's preference

Warrandyte Park

- If JUFC were to relocate to Warrandyte Park the club could relinquish Beldon, Charonia and Forrest.
- Prince Regent could be relinquished if Warrandyte had suitable sports floodlighting and club had access to secondary field for junior training and overflow games (ie Beldon)

Warrandyte Park – Joondalup United Football Club Meeting Notes

- JUFC is still open to discussion with WCFC regarding merger, however not the club's preferred outcome
- JUFC would be interested in Beldon if facilities were upgraded (similar to recent upgrade at Admiral Park). For NPL games, field would still need fence and seating structure
- JUFC advised expected facility/ liquor licence use for Warrandyte Park
 - Wed and Thurs after training 7-9.30 between 20-50 people
 - Saturday 1-7 approx 200 people
 - Sunday 1-7 approx 100 people
- Club relies on sponsorships with local taverns where players go after 7pm most game days
- GH advised main concern would be residents proximity to car parks and the noise that can be generated as people move to cars to leave facility

Percy Doyle and HBF Arena

- JUFC advised that negotiations with SFC for shared use of Percy Doyle 1 is still ongoing:
 - Negotiations have come down to \$720 per home game and \$6,000 bond with JUFC to provide all field equipment and take gate charges, and SFC to take all takings from canteen and bar.
 - Unless ground hire decreases or JUFC has access to income share with bar/canteen this isn't a long term option for the club
- JUFC advised that discussions with VenuesWest for HBF Arena have also been ongoing
 - Ground hire is \$660 per day with VW taking all canteen/bar income
 - VenuesWest would do all field prep, set up line marking etc
- Either option still doesn't address the lack of home facility for the club and isn't sustainable long term given lack of opportunity for revenue generation

Moving Forward

- JS advised that JUFC has been working with the City for 6 years to find home facility.
- Club hasn't had financial capacity to contribute to any works previously which has limited options
- However JUFC have shown sustainability and growth on and off field for the past decade
- JUFC advised of recent link with Glasgow Celtic of the Scottish Premier League
- Celtic will assist JUFC with establishment of junior training academy and opportunities for JUFC coaches to travel to Celtics to learn from and share with Celtic coaches.
- JUFC advised that they are confident of sustainability at NPL level and that irrespective of NPL success the club's focus is spread across community and desire for a home facility
- JS advised of Football West strategy for a 2nd NPL license for Perth and that the northern area (Joondalup) would be an ideal location given population
- JUFC do not see any future expansion of senior side of club, however significant increase in junior (elite and community)
- JS reiterated two main points
 - Priority focus is on finding a suitable location to house the operations of the club as current facilities are inadequate, it is not solely driven by the club's promotion to NPL
 - JUFC are as much of a community based club than any other club, they can accommodate anyone wanting to play football from community based (either senior or junior) or those who want to progress through an elite pathway via the club obtaining NPL status – this offers the club to offer players more choice. NPL status does not lose its community focus.

Summary

- GH asked each JUFC representative if they would like to add anything further – no further information was offered.
- Meeting closed at 5.30pm.

Action Items

- **SF to provide JS with current booking summary**
- **JS to confirm or alter booking summary according to actual park use.**

Project Name	Warrandyte Park, Craigie		
Date	3 Nov 2016	Time of meeting	5.00pm – 6.45pm
Location	City of Joondalup, Administration Building	Chairperson	Garry Hunt
Attendees	<p>City of Joondalup (CoJ)</p> <ul style="list-style-type: none"> • Garry Hunt (GH) – Chief Executive Officer • Mike Smith (MS) – A/Director Corporate Services • Rohan Klemm (RK) – A/Manager Leisure and Cultural Services • Shane Fraser (SF) – A/Recreation Services Coordinator <p>Whitford City Football Club (WCFC)</p> <ul style="list-style-type: none"> • Wilco Vlemmix (WV) – Vice President • Andrew Ward (AW) – Treasurer • Ahren Gray (AG) - Senior Team Coordinator • Michael Lee (ML) – Team Manager 		

Intro

- GH provided intro to meeting and expected outcome being that WCFC have full opportunity to put all issues and options on the table for consideration and for CoJ to ask all questions.
- Need to address the option that WCFC are relocated from Warrandyte Park and what the City would need to do to accommodate club at other location/s
- CoJ has met with Joondalup United Football Club (JUFC) and will be meeting with the other stakeholders on 9 November before the community forum the following week
- Community Forum is an opportunity for the community/local residents to have their say, it's not a forum for clubs and stakeholder groups
- WV asked "why is this process happening now"?
- GH responded that this is not the normal process and normally when considering relocating a club of this nature the City would engage much earlier in the process. However this was a decision of Council that the City is following.

WCFC Current Situation

- 2016 members
 - 345 juniors (26 teams)
 - 47 seniors (3 teams)
 - 11% increase in junior numbers in 2015
- Club currently operates from Warrandyte Park from Monday to Friday with Tuesday, Wednesday and Thursday being main training days
- Seniors play on Sunday afternoon (10.30am onwards) every second Sunday
- Juniors play Sunday mornings
- AW provided documents showing WCFC's field layout and fixturing set up
- Bridgewater Park is used as an overflow training venue for juniors only
- Club uses Clubrooms Sundays
 - Also use C/R committee meetings (monthly), AGM, trophy presentations, awards etc
- In 2017
 - Club expecting further growth in juniors
 - Club expecting masters team to re-establish itself to take senior teams to 4
- Home games are split 50/50 for WCFC teams, some weeks may have a high number of teams at home, some may have small numbers
- With expected growth, Warrandyte Park is still expected to meet WCFC needs, upgrade to sports floodlights will assist in accommodating training requirements
- Clubs focus is community football
- No trials (club trialled trials but didn't work) and the club is not wanting to pursue NPL status

and very much focussed on community based football and does not turn children away

- Club fills teams based on friendship groups rather than skill
- Club is one of the biggest soccer clubs in the CoJ in relation to KidSport applications
- AW and WV indicated that the club consciously managed their bookings of the club rooms to ensure they did not exceed their allocated number of hours under the policy, as with their current bookings of grounds, additional bookings of the clubrooms may compromise their level of subsidisation. MS advised that the policy allowed for increased levels of subsidy where clubs could demonstrate actual use beyond permitted use.

Shared use of Warrandyte Park

- Logistically could work however concern would be around:
 - Cross over in times between WCFC junior training Saturday mornings and NPL games Saturday arvos (Parking etc)
 - Impact on turf given already heavy use and damage occurring over the past 5 or years. Three extra games every second week at a high level will cause more damage
 - Heavier maintenance program for turf may restrict access for informal users

If WCFC were required to relocate away from Warrandyte Park

- Biggest impact would be on the club having to spread operations over three venues with largest impact being on Sunday match days
- Club would need to operate three canteens with three sets of stock and three sets of volunteers
- Club's current income from canteens is approx \$8,000, this assists in offsetting fees
- Majority of clubs members from the Craigie and surrounding suburbs, a shift away from this area may result in members leaving
- Many families have kids playing in different age groups, splitting age groups amongst different parks would mean families would either need to split or race from one field to another
- Club's existing sponsors are attracted to WCFC due to the large numbers of people onsite on game days, spreading across three fields would reduce this opportunity
- Club concerned that operating in three venues would impact on club financials and fees may be increased as a result of having to purchase extra equipment for multiple sites
- Club is already close to allocation of hours under Facility Hire Subsidy Policy going from two fields (Warrandyte Upper and Lower are considered separate fields for booking purposes) to three fields would increase their total hours under the policy significantly
- If Club was to be relocated they would need
 - Preferably a space that replicates Warrandyte Park
 - As many pitches on the one park as possible
 - Consideration for
 - Kitchen/Kiosk
 - Clubrooms/Hall
 - Change rooms/Toilets
 - Storage (important large enough to fit junior goals etc at relevant parks)
 - Football West has the capacity to limit club teams if the clubs access to fields is limited so club would need at least the same number and size fields as located at Warrandyte Park

General

- AW commented that WCFC submitted a booking for park/clubroom for seniors in 2015 online, yet the City does not hold a record of the booking
- Club ran three senior sides in 2015 using the park/facility in line with existing bookings
- AW noted the club doesn't book Clubrooms and kids can't use toilets
- Club advised that the toilets are accessible from the outside (don't need to access clubrooms) using clubs existing keys (additional keys can be sought from Community Facilities Booking Office)

Summary

Warrandyte Park – Whitford City Football Club Meeting Notes

- GH asked each WCFC representative if they would like to add anything further – no further information was offered.
- Meeting closed at 6.45pm.

Action Items

- **AW to provide SF with membership demographics (suburb locations) - Complete**
- **AW to provide SF with fee information – Needs follow up**
- **AW to provide SF with confirmation emails from 2015 senior booking**

As requested, the below were the 2016 fees:

- U6-7 185.00
- U8-11 190.00
- U12-15 235.00
- Amateur 340.00
- Socials 265.00 (they pay their own Referee Fees)

\$10 sibling discount

The above fees do include the Football West part. (Have requested this component from WV)

Project Name	Warrandyte Park, Craigie		
Date	9 Nov 2016	Time of meeting	4.00pm – 5.45pm
Location	City of Joondalup, Administration Building	Chairperson	Garry Hunt
Attendees	<p>City of Joondalup (CoJ)</p> <ul style="list-style-type: none"> • Garry Hunt (GH) – Chief Executive Officer • Mike Smith (MS) – Manager Leisure and Cultural Services • Rohan Klemm (RK) – Senior Projects Officer • Shane Fraser (SF) – A/Recreation Services Coordinator <p>Perth City Football Club (PCFC)</p> <ul style="list-style-type: none"> • Ian Kane (IK) – Secretary • Mike Rolston (MR) <p>Warrandyte Playgroup (WP)</p> <ul style="list-style-type: none"> • Anna Howell (AH) - Chairperson • Emma Howell (EH) <p>Craigie Childcare (CC)</p> <ul style="list-style-type: none"> • Karlie Wahanui (KW) – Centre Director • Duncan Camilleri (DC) <p>Warrandyte Dog Walking Group (WDWG)</p> <ul style="list-style-type: none"> • Mike Stringfellow (MSt) • Jenie Elliot (JE) 		

Intro

- GH welcomed attendees and provided meeting introduction and expected outcome being that all groups have full opportunity to put all issues and options on the table for consideration and for CoJ to ask all questions to inform future report.
- GH advised that the meeting needs to address the option that groups no longer have access to Warrandyte Park and what the City would need to do to accommodate group at other location/s
- CoJ has met with Joondalup United Football Club (JUFC) and Whitford City Football Club (WCFC).
- Details of the Community Forum will be announced Thursday 10 November and is an opportunity for the community/local residents to have their say, it's not a forum for clubs and stakeholder groups who have already put forward comments in relevant meetings.

Groups current situation and usage of Warrandyte Park

- WP
 - Utilise Warrandyte Park Clubrooms 9.30 – 3.30 Monday to Friday
 - 50 members
 - Kids 4 to 12 years of age
 - 3 sessions daily, up to 8 – 10 children per session
 - 9.30-11.30
 - 11.30-1.30
 - 1.30-3.30
 - Morning session booked out
 - Use clubrooms and spill onto grass for activities
 - Operate throughout school terms
 - Currently utilise clubrooms, kitchen, toilets, park, playground, interior storage and exterior storage
 - Also use clubrooms for meetings (AGM & committee) as well as other events
- CC
 - Private business that operates within the community

Warrandyte Park – Stakeholder Group Meeting Notes

- 100 permanent families, 25 casual families, 280 families on inactive list
- Max 44 kids on any one day
- 0-6 years of age (18m to 6y visit park)
- Walk to Warrandyte on a daily basis and use it as an additional classroom
- 20-40 kids at a time
- Use park most days in mid morning and mid afternoon
- Use park, playground and surrounding bush, share toilets with WP
- Use park to promote nature play principles
- Part of “Eco-Warriors” program
- Many families link the CC with the WP
- Most families are local (approximately 95%)
- WDWG
 - 200 people (dog owners and non dog owners)
 - Some people walking on lead along paths, and some off lead using the park
 - Busy periods being 6am-9am and 4pm to 6pm
 - Weekends are busiest in the mid afternoon
 - Can have groups up to 40 dogs
 - Utilise tap and shade by clubrooms
 - Focus is on the open space which provides open area for dogs, kids and adults to exercise and socialise
 - Minimal traffic around park makes it more attractive
 - Most dog walkers don’t attend the park when training is on
 - WCFC often keep the southern side of the upper field free for dog walkers
 - Dog walkers and WCFC co-exist
- PCFC
 - 2 x masters teams and 1 social team
 - 57 active members, 71 total (76% CoJ Residents)
 - Own incorporated association
 - Not affiliated with other clubs
 - Approx 30 members at training any given day
 - Winter - Thursday evenings 7.30 – 9
 - Summer – Thursday evenings 6.30 – 9
 - Train on lower field
 - Strong relationship with WCFC, also historic relationship with JUFC
 - Used to operate from Arena Joondalup, relocated with soccer moved off
 - Started training at Warrandyte Park in 2000
 - Couldn’t move games to Warrandyte due to existing usage (WCFC)
 - Play games at Kingsway under an agreement with Wanneroo City Soccer Club
 - Club utilises Warrandyte Park referee room for storage
 - Club had a Sunday booking in 2014 for games but WCFC continued use of park

What would group need if relocated from Warrandyte Park

- WP
 - Same as what currently exists at Warrandyte Park – storage, indoor function space, kitchen, toilets, playground, outdoor space, car parking
 - Would also like to have air conditioning and more outdoor shade
 - Would have to change name if they relocated
- CC
 - Next closest public open spaces - Otago Park approx 660m from CC and Adelaide Park approx 740m from CC
 - Warrandyte Park approx 370m from CC
 - Would need open space, bush, tracks and toilets
 - Safe place (no syringes/litter)
 - It’s not normal for other childcare providers to visit parks as regular activity, its a unique experience that CC provides
 - CC pushing nature play aspects with members
- WDWG
 - Access to open space (WCFC provide access to southern side of upper field)

Warrandyte Park – Stakeholder Group Meeting Notes

- JE commented that a senior user group at Warrandyte Park would likely use more of the park space which would impact on use by dog walkers
- PCFC
 - Would need playing field, change rooms, hot and cold showers, car parking, storage and floodlights

National Premier League Requirements

- MS noted that feedback from clubs is that WCFC is a community focused club and JUFC provide both elite (NPL) and community streams
- MS referenced NPL minimum requirements (available online [here](#) – Appendix B), in particular fence requirements (800mm – to 1,000mm high around pitch with multiple openings for access) and seating structure (120 seats, not a stadium like structure)
- JE asked about parking, MS advised that attendance numbers for NPL games are usually no more than 200 so similar to what the park currently experiences on busy junior soccer days.

General

- GH noted that all options are being considered and all 62 active reserves throughout the City are being assessed
- MS noted that JUFC have commented their focus is on a home for the club and not only NPL requirements
- KW – concerned about impact of a liquor license for the park and possible increase in anti-social behaviour and litter
- AH asked what would happen if the liquor license wasn't granted
 - MS responded that this would be an issue between JUFC and Football West
- MR asked about shared option (AFL/Soccer)
 - MS responded that all options are being considered, however AFL parks generally have cricket pitch in the middle of the field which the clubs play over. Soccer can't play over cricket wickets
- IK asked about possible lease for Warrandyte Park Clubrooms
 - MS advised that this wouldn't be in line with the City's Property Management Framework and that the majority of parks and community facilities are managed on a seasonal/annual basis
- JE commented that Craigie Campfire Guides were concerned about losing access to the facility
- JE commented that fence may restrict dog walkers activity (prefer open space)
- JE commented about the amount of development surrounding Warrandyte Park (change in management of Craigie Open Space, water treatment plant, bus depot etc)
- GH noted that the community forum is predominantly for local residents and that stakeholder feedback has been sought through the relevant meetings
- All information that has been captured through the stakeholder meetings and the community forum will be consolidated for consideration within the upcoming Council report
- GH noted that the community forum will be announced tomorrow and that all relevant parties will be notified
- MSt presented GH with petition which was accepted on behalf of the City
- MSt commented that approx 50% of dog walkers access park via car, so car parking is a requirement for them

Summary

- GH asked each group if they would like to add anything further – no further information was offered.
- Meeting closed at 5.45pm.

Action Items

- **AH to provide SF with membership data including % of City of Joondalup residents**
- **KW to provide SF with membership data including % of City of Joondalup residents**
- **IK to provide SF with membership data including % of City of Joondalup residents**
- **SF to contact Craigie Campfire Guides to reiterate discussion that took place on**

**Warrandyte Park –
Stakeholder Group Meeting Notes**

Monday 7/11

Summary – Warrandyte Community Forum

Name	Comment
Ms K Barton, Craigie	<ul style="list-style-type: none"> • Concern with fencing and locked gates around the ground. • Seven day liquor licensing. • Players of Whitford City are in close proximity to Park.
Mr P Barton, Craigie	<ul style="list-style-type: none"> • Commented on the comparative facilities at Percy Doyle Reserve.
Ms P Jenkinson, Craigie	<ul style="list-style-type: none"> • Concerned with traffic volumes and shortage of parking. • Footpath infrastructure around the surrounding roads is inadequate. • Concern with alcohol consumption and drink driving.
Ms S Vinson, Craigie	<ul style="list-style-type: none"> • Asked a series of questions about JUFC and the City's subsidy policy for sporting clubs.
Ms E McGee, Craigie	<ul style="list-style-type: none"> • Commented on the utilisation of the park. • Utilisation of the clubrooms would not be comparative to a senior club. • Current parking congestion on game days.
Ms Lisa Hall, Craigie	<ul style="list-style-type: none"> • Increased noise should JUFC be relocated. • Concern with drinking of alcohol and drugs.
Mr M Stringfellow, Craigie	<ul style="list-style-type: none"> • Commented on park utilisation figures and facility improvements. • Retain the facility as is with current users.
Mr G Stickland, Craigie	<ul style="list-style-type: none"> • Commented on the different requirements of the two sporting clubs. • Commented on the type of infrastructure that would be installed for an NPL club and the comparison with Percy Doyle Reserve.
Ms A Staples, Craigie	<ul style="list-style-type: none"> • Community park for locals to enjoy.
Ms M Saxon, Craigie	<ul style="list-style-type: none"> • Concern with increase in traffic. • Width of streets is too narrow. • Concern with liquor licensing and drinking late at night.

Name	Comment
Ms S Kendrick, Craigie	<ul style="list-style-type: none"> • Local park for local community. • Concern with fencing and advertising. • Infrastructure will restrict or change use of the park for others. • Increased traffic and parking demand. • Loss of trees if new infrastructure is provided. • Increased noise. • Alcohol consumption.
Mr O Sylva, Craigie	<ul style="list-style-type: none"> • Increased parking. • Level of infrastructure to be installed.
Mr T Marr, Craigie	<ul style="list-style-type: none"> • Concern with increased in traffic • Concern with increased noise • Concern with liquor licensing.
Ms A MacDonald, Craigie	<ul style="list-style-type: none"> • Concern with increase in parking demand and lack of existing parking at park.
Mr D MacDonald, Craigie	<ul style="list-style-type: none"> • Park would be insufficient to cope with level of attendance of an NPL game.
Mr J Mucha, Craigie	<ul style="list-style-type: none"> • Concerned that local amenity will be disturbed.
Ms D Harris, Craigie	<ul style="list-style-type: none"> • Concern with property values if park is developed to an NPL standard • Concern local amenity will be disturbed. • Concern with inadequate parking around the park and in adjoining local streets.
Mr S Moore, Craigie	<ul style="list-style-type: none"> • Commented on facility sharing at Percy Doyle Reserve or the possibility of the City developing a regional facility for all clubs to use.
Mr R Vincent, Craigie	<ul style="list-style-type: none"> • Concern with relocating club and impact with would have on WCFC.
Mr P Blyth, Craigie	<ul style="list-style-type: none"> • The park is a community facility and the community should be given priority over a football club.
Ms Y Heath, Craigie	<ul style="list-style-type: none"> • Fencing would prevent dogs to exercise on the park.
Mr P Bordan, Craigie	<ul style="list-style-type: none"> • Concern with the level and type of fencing that may be installed.

Name	Comment
Mr G Ford, Craigie	<ul style="list-style-type: none"> Concerned with the level of infrastructure that would be required and possibly increase over time.
Mr B Cooper, Craigie	<ul style="list-style-type: none"> An NPL club would increase traffic on Eddystone Avenue.
Ms S Vinson, Craigie	<ul style="list-style-type: none"> Reduced ability for community to utilise the park.
Ms P Jenkinson, Craigie	<ul style="list-style-type: none"> Suggested that Flinders Park, Hillarys should be looked at as a potential option for development.
Mr C Ford, Craigie	<ul style="list-style-type: none"> Concerned the facility is not big enough or appropriate for JUFC.

The table below depicts the usage of JUFC across all City facilities for the last three seasons:

Joondalup United Football Club (Juniors)								
	Charonia Park	Beldon Park	Forrest Park	Prince Regent Park	Forrest Park Community Sporting Facility	Currambine Community Centre	Rob Baddock Community Hall	Total
Winter 2014	Did not have junior clubs							
Winter 2015	128	133	0	0	2	0	0	263
Winter 2016	20	0	0	398	5	0	0	423
Joondalup United Football Club (Seniors)								
Winter 2014	66	180.25	66	0	77	0	0	389.25
Winter 2015	104	270.5	60	0	5	8	0	447.5
Winter 2016	104	221	66	52	82.5	7.5	8	541
Club total hours 3 year period								2063.75

For the 2016 winter season the following table details the weekly booking schedule for JUFC across its playing surfaces:

JUFC	Mon	Tues	Wed	Thurs	Fri	Sat	Sun
Prince Regent (Snrs)		7.30pm to 8.30pm	5.00pm to 7.30pm	7.30pm to 8.30pm			8.00am to 12.30pm
Prince Regent (Jnrs)	5.00pm to 7.30pm		5.00pm to 7.30pm	5.00pm to 7.30pm	5.00pm to 7.30pm		
Charonia (Snrs)							1.00pm to 5.00pm
Beldon (Snrs)		6.30pm to 8.00pm	6.30pm to 8.00pm	6.30pm to 8.00pm			1.00pm to 5.00pm
Forrest (Snrs)						11.00am to 5.00pm	

The table below depicts the usage of WCFC across all City facilities for the last three seasons:

Whitford City Football Club (Juniors)					
	Warrantyte Park	Warrantyte Park	Bridgewater Park	Warrantyte Park	
Winter 2014	390.5	296	78	151	916
Winter 2015	256	476	65	258.5	1055.5
Winter 2016	402.5	494	117	138	1151
Whitford City Football Club (Seniors)					
Winter 2014	182	143	0	104	429
Winter 2015	Did not have booking				
Winter 2016	164.5	78	0	117	359
Club total hours 3 year period					3912.0

Note - The WCFC seniors submitted a preliminary booking for the 2015 winter season, however they withdrew the booking request as part of the confirmation process.

For the 2016 winter season the following table details the weekly booking schedule for JUFC across its playing surfaces:

WCFC	Mon	Tues	Wed	Thurs	Fri	Sat	Sun
Warrantyte Upper (Snrs)				7.00pm to 8.30pm	7.00pm to 8.30pm		
Warrantyte Upper (Jnrs)	4.30pm to 7.00pm	4.30pm to 7.00pm	4.30pm to 7.00pm	4.30pm to 7.00pm	4.30pm to 7.00pm	9.30am to 12.00pm	8.30am to 12.30pm
Warrantyte Lower (Snrs)		6.30pm to 8.30pm					12.30pm to 5.00pm
Warrantyte Lower (Jnrs)	4.30pm to 7.00pm	4.30pm to 7.00pm	4.30pm to 7.00pm	4.30pm to 7.00pm	4.30pm to 7.00pm		
Bridgewater		5.00pm to 6.30pm	4.00pm to 5.30pm	5.00pm to 6.30pm			

The following are the venue requirements for NPL:

Minimum Venue Requirements for NPLWA Seniors Field of Play		
Criterion	Minimum Requirement	Recommended
Dimensions	Field of Play must satisfy the requirements of the Laws of the Game with a minimum width of 60 metres.	105 metres x 68 metres.
Perimeter Fence	A temporary or permanent fence fully enclosing the field of play, with a recommended height between 800mm and 1000mm. Any temporary fencing must be approved by Football West. Where it is not possible to erect a perimeter fence, Football West may negotiate alternative arrangements.	An access gate for an ambulance, which is kept closed except when the ambulance is required to move onto the Field of Play is recommended.
Technical Area	Must be present and comply with recommendations in the Laws of the Game. Technical areas must be wholly inside the perimeter fence.	Technical areas should be either side, and equidistant from the half way line with a maximum distance of 10 metres between each technical area.
Team Benches	There must be seating for 10 people inside each technical area.	A separate chair with a backrest should be provided for each person who will occupy the technical areas.
Minimum Venue Requirements for NPLWA Seniors Field of Play		
Criterion	Minimum Requirement	Recommended
Playing Surface	Must be smooth and level to allow the players and match officials the confidence of movement that would not contribute in any way to injuries or unexpected falls.	
Line Markings	Must be white. No other line markings other than those required under the Laws of the Game may be present on the Field of Play.	Marks may be made OFF the field of play 9.15 metres (10 yards) from the corner arc and at right angles to the goal lines and touch lines to assist match officials at corner kicks. Marks should be made in white paint.
Goalposts	Must be white and when stained by bore water or some other agent, cleaned.	Goal nets should not be suspended by any kind of metal frame or elbow but by some other method which does not constitute a danger to players (such box nets).
Equipment	A stretcher, 4 corner flags that are plain and without club or any other logo.	
Venue Facilities		
Signage	24 metres linear metres is to be reserved for Sony PS4 signage comprising 8 metres on the centre of the far side of the field (4 metres each side of the half-way line) and 8 metres behind each goal.	Football West or its nominee

Seating Capacity	A permanent structure specifically designed for seating spectators situated outside the clubrooms that provides unobstructed viewing to the field of play and that provides seating for a minimum of 120 people. The structure must be approved by Football West.	A permanent structure specifically designed for seating spectators situated outside the clubrooms that provides unobstructed viewing to the field of play and that provides under cover seating for a minimum of 500 people. The structure must be approved by Football West.
Food and Drinks	The venue must have selling points for food and alcoholic and non-alcoholic beverages.	In addition, an exclusive area for sponsors and VIPs should be set aside.
Toilets	Male and Female Public toilets which are away from the team change rooms and accessible to all spectators.	A public disabled toilet should be provided.
Parking	Sufficient parking for match officials close to the match officials' change room.	50 bays for players and team officials.

Change Rooms

Home and Away Teams	Must be separate from each other and be large enough for 20 people. Must have hot and cold water showers, toilets which are separate from the public toilets and clothes hanging facilities.	Other equipment recommended: <ul style="list-style-type: none"> • Whiteboard and pens • Mirror & Washbasin • Power Points • Refrigerator
---------------------	--	--

Minimum Venue Requirements for NPLWA Seniors Field of Play

Criterion	Minimum Requirement	Recommended
Match Officials	Must be separate from team change rooms and be large enough for four people. Must have a hot and cold water shower, a toilet and clothes hanging facilities. The match officials' change room may not be used for any other purpose (such as storage) and MUST be lockable.	Match officials should be able to move to the team change rooms without going through an open area or an area to which spectators and the general public has access. Other equipment recommended: <ul style="list-style-type: none"> • Mirror & Washbasin • Power Points
Signage	All rooms must be clearly marked as to their purposes.	

Sports Presentation

PA System	A PA system of sufficient volume to be heard throughout the complete spectator area is required.	A system that can handle both music and speech simultaneously. A CD player or some other means through which music can be played through loudspeakers in the main spectator area. Wireless microphone connected to the PA System.
Scoreboard	A scoreboard erected on one side of the Field of Play, which is visible to people on the opposite side of the Field of Play. The scoreboard must be able to display unique team names and team scores.	

Medical

Treatment Table	An undercover treatment table must be present, which is able to be used by both teams.	A separate Athletes Medical Room is recommended with two treatment tables.
-----------------	--	--

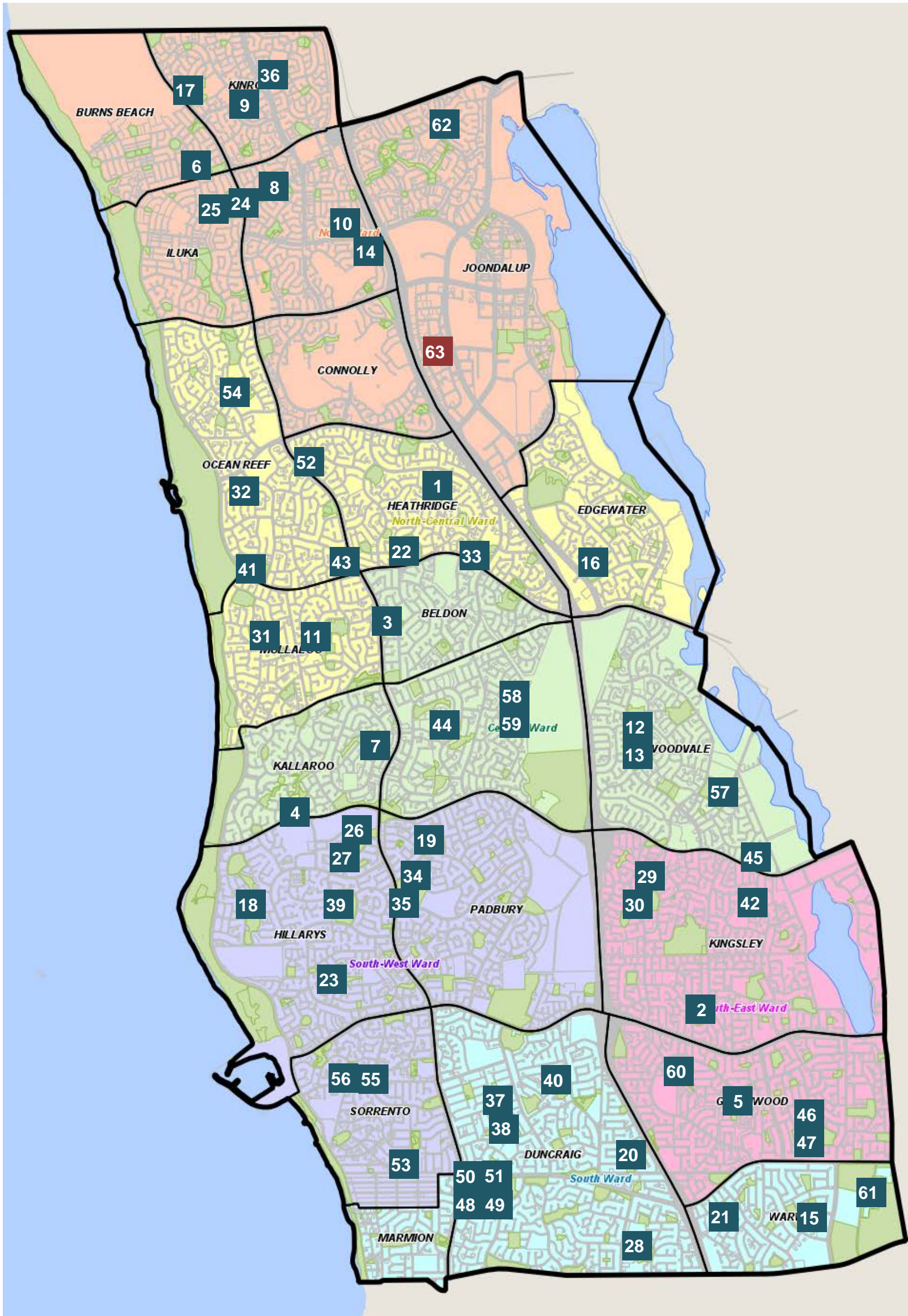
Other leagues

- State League Div 1 and 2 (Class B)
- Amateur League (Class C)
- Everyone else (Class D)

Requirement	Class A	Class B	Class C	Class D
Field of Play size in addition to requirements of the Laws of the Game	Minimum width 60m		Minimum width 60m, with exceptions to 55m where approved.	None
Technical Area	Required			Not required
Technical Area Seating	8 seats			N/A
Field of Play Barrier (separating spectators from the match)	Must completely surround the field of play	Barrier must exist between spectators and the FoP and TA		N/A
Floodlights	Where present, they must be approved by Football West for competition matches.			
Players' Change Rooms	Two separate and lockable rooms required. Must have hot and cold water showers and toilets.			
Match Officials' Change Rooms	Separate room which can accommodate 4 people. Must have hot and cold water shower and toilet.		Not required	
Scoreboard	Fully functional and in operation for every match		Not required	
Spectator Facilities	Male and Female public toilets with hot and cold running water, soap and ability to dry hands.			
	Canteen or kiosk serving hot and cold drinks and snack foods.			

ACTIVE RESERVES

ATTACHMENT 5



1	Admiral Park
2	Barridale Park
3	Beldon Park
4	Belrose Park
5	Blackall Park
6	Bramston Park
7	Bridgewater Park
8	Caledonia Park
9	Callander Park
10	Carlton Park
11	Charonia Park
12	Chichester Park - North
13	Chichester Park - South
14	Christchurch Park
15	Ellersdale Park
16	Emerald Park
17	Falklands Park
18	Flinders Park
19	Forrest Park
20	Glengarry Park
21	Hawker Park
22	Heathridge Park
23	Hillarys Park
24	Iluka Open Space - East
25	Iluka Open Space - West
26	James Cook Park - North
27	James Cook Park - South
28	Juniper Park
29	Kingsley Park - Senior
30	Kingsley Park - Junior
31	Korella Park
32	Lexcen Park
33	Littorina Park
34	MacDonald Park - North
35	MacDonald Park - South
36	MacNaughton Park
37	Marri Park - Upper
38	Marri Park - Lower
39	Mawson Park
40	Melene Park
41	Mirror Park
42	Moolanda Park
43	Ocean Reef Park
44	Otago Park
45	Parkside Park
46	Penistone Park - Upper
47	Penistone Park - Lower
48	Percy Doyle Reserve - 1 (SW)
49	Percy Doyle Reserve - 2 (SE)
50	Percy Doyle Reserve - 3 (NW)
51	Percy Doyle Reserve - Oval (NE)
52	Prince Regent Park
53	Robin Park
54	Santiago Park
55	Seacrest Park - East
56	Seacrest Park - West
57	Timberlane Park
58	Warrandyte Park - Upper
59	Warrandyte Park - Lower
60	Warrigal Park
61	Warwick Open Space
62	Windemere Park
63	Elcar Park (not active)

1 - ADMIRAL PARK, HEATHRIDGE



Size	46155m ²
Current Classification	Local Park
Proposed Classification	Local Sports Park
Primary Use	Rugby - Cricket
Club Home Base	Joondalup District Rugby Club Junior Joondalup District Rugby Club Senior
Number of Playing Surfaces	2 Rugby - 1 Cricket
Buildings	
Function/Meeting Space	Yes
Toilets	Yes – Public Toilet
Players Changeroom	Yes x 2 with toilet
Umpire Changeroom	Yes
Canteen/Kiosk	Yes
Kitchen	Yes
Storage	Yes x 4
First Aid Room	Yes
Infrastructure	
Floodlighting	4
Play Equipment	Yes
Other	---

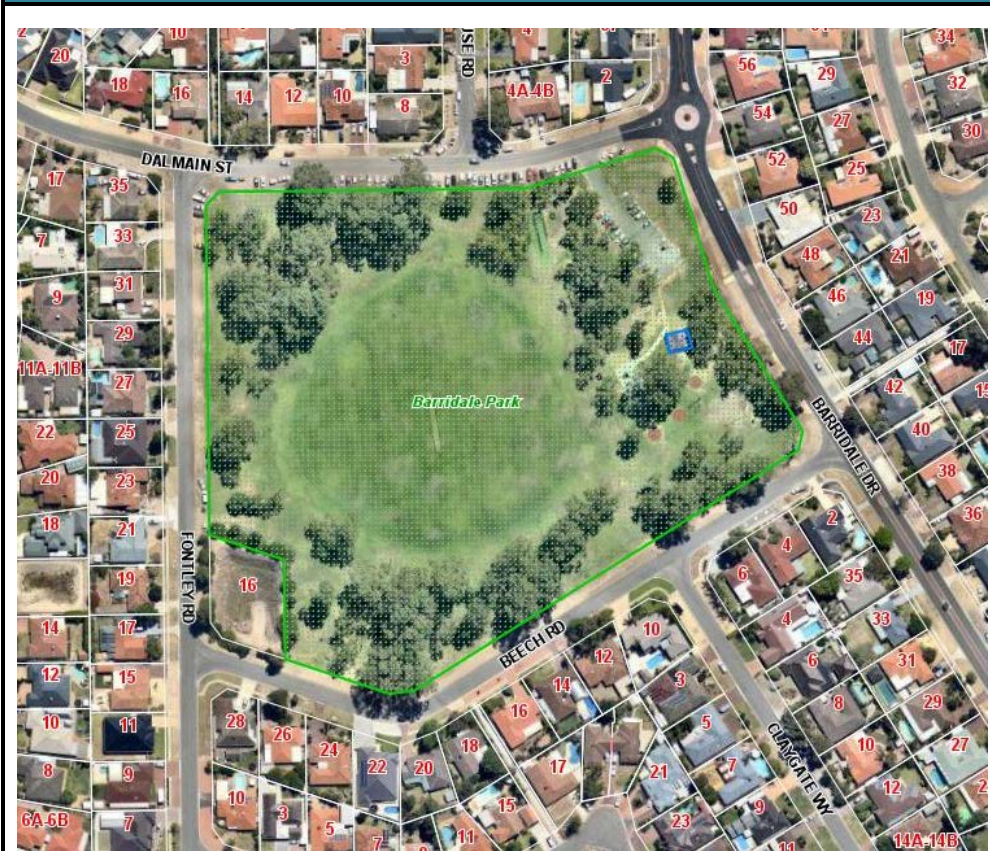
Park Bookings

Annual Bookings	Mon	Tue	Wed	Thu	Fri	Sat	Sun
Winter Bookings	Mon	Tue	Wed	Thu	Fri	Sat	Sun
Joondalup & Districts Rugby (S)		6.30pm – 9.00pm	6.00pm – 8.30pm	6.30pm – 9.00pm	5.00pm – 8.00pm	9.00am – 6.00pm	
Joondalup & Districts Rugby (J)		4.30pm – 6.30pm		4.30pm – 6.30pm			8.00am – 4.00pm
Summer Bookings	Mon	Tue	Wed	Thu	Fri	Sat	Sun
Ocean Ridge Junior Cricket	4.30pm – 6.30pm	4.30pm – 6.30pm	4.30pm – 6.30pm	4.30pm – 6.30pm	4.30pm – 6.30pm	8.00am – 12.00pm	8.00am – 12.00pm
Edgewater Cricket (S)						12.00pm – 6.00pm	

Clubroom Bookings

Annual Bookings	Mon	Tue	Wed	Thu	Fri	Sat	Sun
The Centre of Cerebral Palsy	3.00pm – 5.30pm		3.00pm – 5.30pm				
Woodvale Family Playgroup	9.30am – 1.30pm	9.30am – 1.30pm	9.30am – 1.30pm	9.30am – 1.30pm	9.30am – 1.30pm		
Visionary Martial Arts		4.00pm – 5.00pm		4.00pm – 5.00pm			
Winter Bookings	Mon	Tue	Wed	Thu	Fri	Sat	Sun
Joondalup & Districts Rugby Club				5.00pm – 9.00pm		9.00am – 10.00pm (fort)	
Summer Bookings	Mon	Tue	Wed	Thu	Fri	Sat	Sun

2 – BARRIDALE PARK, KINGSLEY



Size	42091m ²
Current Classification	Local Park
Proposed Classification	Local Sports Park
Primary Use	AFL - Cricket
Club Home Base	---
Number of Playing Surfaces	1 AFL - 1 Cricket
Buildings	
Function/Meeting Space	No
Toilets	Yes – Block
Players Changeroom	No
Umpire Changeroom	No
Canteen/Kiosk	No
Kitchen	No
Storage	No
First Aid Room	No
Infrastructure	
Floodlighting	3
Play Equipment	Yes
Other	---

Park Bookings

Annual Bookings	Mon	Tue	Wed	Thu	Fri	Sat	Sun
Winter Bookings	Mon	Tue	Wed	Thu	Fri	Sat	Sun
Kingsley Junior Football	3.00pm – 6.00pm	3.00pm – 6.00pm	3.00pm – 6.00pm	3.00pm – 6.00pm	3.00pm – 6.00pm	8.00am – 1.00pm	
Summer Bookings	Mon	Tue	Wed	Thu	Fri	Sat	Sun
Kingsley Woodvale Junior Cricket	4.30pm – 6.30pm	4.30pm – 6.30pm	4.30pm – 6.30pm	4.30pm – 6.30pm	4.30pm – 6.30pm	8.00am – 12.00pm	8.00am – 12.00pm
Kingsley Woodvale Senior Cricket						12.00pm – 6.00pm	

Clubroom Bookings

Annual Bookings	Mon	Tue	Wed	Thu	Fri	Sat	Sun
Winter Bookings	Mon	Tue	Wed	Thu	Fri	Sat	Sun
Summer Bookings	Mon	Tue	Wed	Thu	Fri	Sat	Sun

3 - BELDON PARK, BELDON



Size	38031m ²
Current Classification	Local Park
Proposed Classification	Local Sports Park
Primary Use	Soccer
Club Home Base	Joondalup United Football Club
Number of Playing Surfaces	1 Soccer
Buildings	
Function/Meeting Space	No
Toilets	Yes – Block
Players Changeroom	No
Umpire Changeroom	No
Canteen/Kiosk	No
Kitchen	No
Storage	No
First Aid Room	No
Infrastructure	
Floodlighting	4
Play Equipment	Yes
Other	Shared with Beldon Primary

Park Bookings

Annual Bookings	Mon	Tue	Wed	Thu	Fri	Sat	Sun
Beldon Primary School	8.00am – 4.00pm	8.00am – 4.00pm	8.00am – 4.00pm	8.00am – 4.00pm	8.00am – 4.00pm		
Winter Bookings	Mon	Tue	Wed	Thu	Fri	Sat	Sun
Joondalup United Football Club (S)		6.30pm – 8.30pm	6.30pm – 8.30pm	6.30pm – 8.30pm			1.00pm – 5.00pm
Summer Bookings	Mon	Tue	Wed	Thu	Fri	Sat	Sun

Clubroom Bookings

Annual Bookings	Mon	Tue	Wed	Thu	Fri	Sat	Sun
Winter Bookings	Mon	Tue	Wed	Thu	Fri	Sat	Sun
Summer Bookings	Mon	Tue	Wed	Thu	Fri	Sat	Sun

4 - BELROSE PARK, KALLAROO



Size	27699m ²
Current Classification	Neighbourhood Park
Proposed Classification	Local Sports Park
Primary Use	Cricket - AFL
Club Home Base	---
Number of Playing Surfaces	1 Cricket - 1 AFL
Buildings	
Function/Meeting Space	No
Toilets	Yes – Block
Players Changeroom	No
Umpire Changeroom	No
Canteen/Kiosk	No
Kitchen	No
Storage	No
First Aid Room	No
Infrastructure	
Floodlighting	1
Play Equipment	No
Other	---

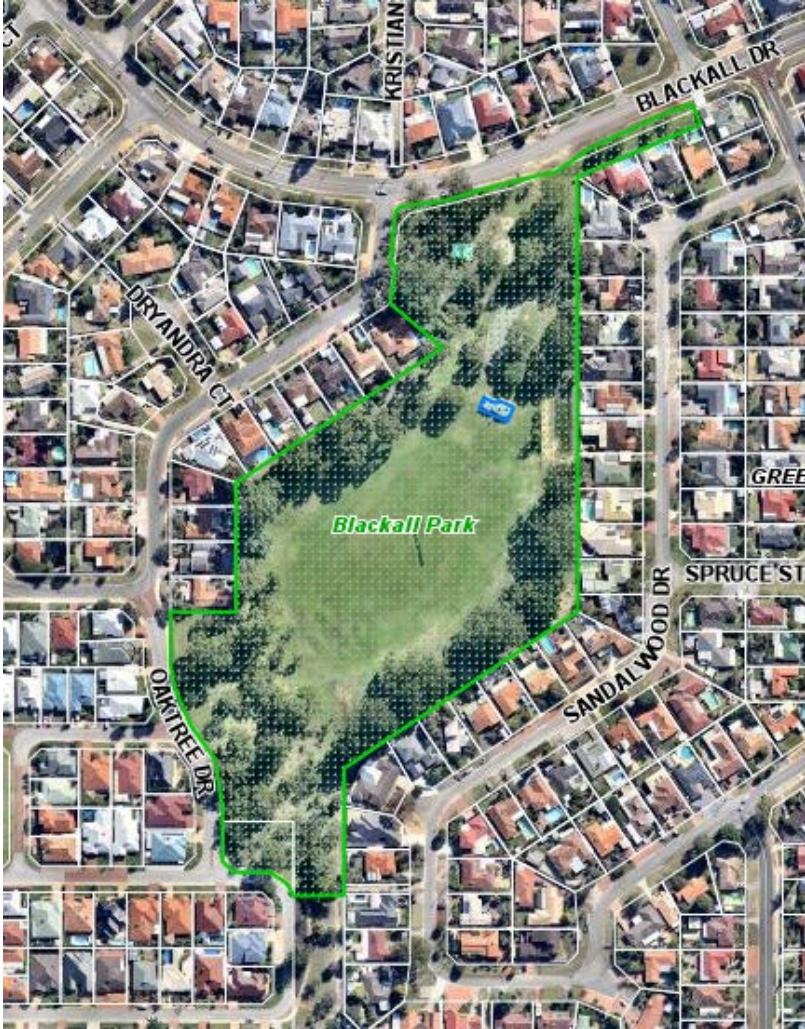
Park Bookings

Annual Bookings	Mon	Tue	Wed	Thu	Fri	Sat	Sun
Open Air Fitness	9.30am – 10.30am 6.00pm – 7.00pm	9.30am – 10.30am 6.00pm – 7.00pm	9.30am – 10.30am 6.00pm – 7.00pm	9.30am – 10.30am 6.00pm – 7.00pm	9.30am – 10.30am 6.00pm – 7.00pm	6.00am – 7.00am 6.00pm – 7.00pm	6.00am – 7.00am 6.00pm – 7.00pm
Winter Bookings	Mon	Tue	Wed	Thu	Fri	Sat	Sun
Whitford Junior Football Club	4.00pm – 6.00pm	4.00pm – 6.00pm	4.00pm – 6.00pm	4.00pm – 6.00pm	4.00pm – 6.00pm		8.00am – 6.00pm
Summer Bookings	Mon	Tue	Wed	Thu	Fri	Sat	Sun
Whitfords Junior Cricket	4.00pm – 6.30pm	4.00pm – 6.30pm	4.00pm – 6.30pm	4.00pm – 6.30pm	4.00pm – 6.30pm	8.00am – 12.00pm	
Kallaroo Cricket						12.00pm – 6.30pm	

Clubroom Bookings

Annual Bookings	Mon	Tue	Wed	Thu	Fri	Sat	Sun
Winter Bookings	Mon	Tue	Wed	Thu	Fri	Sat	Sun
Summer Bookings	Mon	Tue	Wed	Thu	Fri	Sat	Sun

5 - BLACKALL PARK, GREENWOOD



Size	1126m ²
Current Classification	Neighbourhood Park
Proposed Classification	Local Mixed-Use Park
Primary Use	Cricket - AFL
Club Home Base	---
Number of Playing Surfaces	1 Cricket - 1 AFL
Buildings	
Function/Meeting Space	No
Toilets	Yes – Block
Players Changeroom	No
Umpire Changeroom	No
Canteen/Kiosk	No
Kitchen	No
Storage	No
First Aid Room	No
Infrastructure	
Floodlighting	1
Play Equipment	No
Other	---

Park Bookings

Annual Bookings	Mon	Tue	Wed	Thu	Fri	Sat	Sun
Winter Bookings	Mon	Tue	Wed	Thu	Fri	Sat	Sun
Warwick Greenwood Junior Football	4.00pm – 7.30pm	4.00pm – 7.30pm	4.00pm – 7.30pm	4.00pm – 7.30pm	4.00pm – 7.30pm		
Summer Bookings	Mon	Tue	Wed	Thu	Fri	Sat	Sun
Warwick Greenwood Junior Cricket	4.00pm – 6.00pm	4.00pm – 6.00pm	4.00pm – 6.00pm	4.00pm – 6.00pm	4.00pm – 6.00pm	8.00am – 12.00pm	8.00am – 12.00pm

Clubroom Bookings

Annual Bookings	Mon	Tue	Wed	Thu	Fri	Sat	Sun
Winter Bookings	Mon	Tue	Wed	Thu	Fri	Sat	Sun
Summer Bookings	Mon	Tue	Wed	Thu	Fri	Sat	Sun

6 - BRAMSTON PARK, BURNS BEACH



Size	39358m ²
Current Classification	Local Open Space
Proposed Classification	Local Sports Park
Primary Use	Soccer - Cricket
Club Home Base	Westside FC
Number of Playing Surfaces	2 Soccer - 1 Cricket
Buildings	
Function/Meeting Space	Yes
Toilets	Yes – In Clubroom & Public Toilet
Players Changeroom	Yes x 2
Umpire Changeroom	Yes
Canteen/Kiosk	Yes
Kitchen	Yes
Storage	Yes x 5
First Aid Room	No
Infrastructure	
Floodlighting	4 – 50 lux Australian Standard
Play Equipment	No
Other	---

Park Bookings

Annual Bookings	Mon	Tue	Wed	Thu	Fri	Sat	Sun
Winter Bookings	Mon	Tue	Wed	Thu	Fri	Sat	Sun
West Side Football Club (J)	4.30pm – 8.30pm	4.30pm – 8.30pm	4.30pm – 8.30pm	4.30pm – 8.30pm	4.30pm – 8.30pm	8.30am – 12.30pm	8.00pm – 3.00pm
Summer Bookings	Mon	Tue	Wed	Thu	Fri	Sat	Sun
Joondalup Kinross Junior Cricket	4.00pm – 6.30pm	4.00pm – 6.30pm	4.00pm – 6.30pm	4.00pm – 6.30pm	4.00pm – 6.30pm	8.00am – 12.00pm	8.00am – 12.00pm

Clubroom Bookings

Annual Bookings	Mon	Tue	Wed	Thu	Fri	Sat	Sun
Indian Blue Chorus		6.45pm – 11.30pm					
Joondalup Adventure Girl Guides		5.15pm – 6.45pm					
Joondalup Twilight Guides			6.00pm – 8.30pm				
Winter Bookings	Mon	Tue	Wed	Thu	Fri	Sat	Sun
Westside Football Club							8.00am – 3.00pm
Summer Bookings	Mon	Tue	Wed	Thu	Fri	Sat	Sun

7 - BRIDGEWATER PARK, KALLAROO

	Size	27801m ²
	Current Classification	Local Park
	Proposed Classification	Local Sports Park
	Primary Use	Soccer - Cricket
	Club Home Base	---
	Number of Playing Surfaces	1 Jnr Cricket
	Buildings	
	Function/Meeting Space	No
	Toilets	Yes – Block
	Players Changeroom	No
	Umpire Changeroom	No
	Canteen/Kiosk	No
	Kitchen	No
	Storage	No
	First Aid Room	No
	Infrastructure	
	Floodlighting	2
	Play Equipment	Yes
	Other	---

Park Bookings

Annual Bookings	Mon	Tue	Wed	Thu	Fri	Sat	Sun
Winter Bookings	Mon	Tue	Wed	Thu	Fri	Sat	Sun
Whitford City Football Club (J)		5.30pm – 6.30pm	4.00pm – 5.30pm	5.30pm – 6.30pm			
Summer Bookings	Mon	Tue	Wed	Thu	Fri	Sat	Sun
Whitford Junior Cricket	4.00pm – 6.30pm	4.00pm – 6.30pm	4.00pm – 6.30pm	4.00pm – 6.30pm	4.00pm – 6.30pm	8.00am – 12.00pm	8.00am – 12.00pm

Clubroom Bookings

Annual Bookings	Mon	Tue	Wed	Thu	Fri	Sat	Sun
Winter Bookings	Mon	Tue	Wed	Thu	Fri	Sat	Sun
Summer Bookings	Mon	Tue	Wed	Thu	Fri	Sat	Sun

8 - CALEDONIA PARK, CURRAMBINE



Size	34121m ²
Current Classification	Local Park
Proposed Classification	Local Sports Park
Primary Use	Soccer - Cricket
Club Home Base	Currambine FC
Number of Playing Surfaces	1 Soccer - 1 Cricket
Buildings	
Function/Meeting Space	No
Toilets	Yes – Block
Players Changeroom	No
Umpire Changeroom	No
Canteen/Kiosk	No
Kitchen	No
Storage	No
First Aid Room	No
Infrastructure	
Floodlighting	2
Play Equipment	Yes
Other	---

Park Bookings

Annual Bookings	Mon	Tue	Wed	Thu	Fri	Sat	Sun
Winter Bookings	Mon	Tue	Wed	Thu	Fri	Sat	Sun
Joondalup City Football Club (J)	4.00pm – 8.15pm	4.00pm – 8.15pm	4.00pm – 8.15pm	4.00pm – 8.15pm	4.00pm – 8.15pm		
Currambine Football Club (S)							12.30pm – 2.30pm
Summer Bookings	Mon	Tue	Wed	Thu	Fri	Sat	Sun
Joondalup Kinross Cricket (S)						12.00pm – 6.30pm	
Joondalup Kinross Junior Cricket	4.00pm – 6.30pm	4.00pm – 6.30pm	4.00pm – 6.30pm	4.00pm – 6.30pm	4.00pm – 6.30pm	8.00am – 12.00pm	8.00am – 12.00pm

Clubroom Bookings

Annual Bookings	Mon	Tue	Wed	Thu	Fri	Sat	Sun
Winter Bookings	Mon	Tue	Wed	Thu	Fri	Sat	Sun
Summer Bookings	Mon	Tue	Wed	Thu	Fri	Sat	Sun

9 - CALLANDER PARK, KINROSS



Size	15719m ²
Current Classification	Neighbourhood Park
Proposed Classification	Local Sports Park
Primary Use	AFL - Cricket
Club Home Base	---
Number of Playing Surfaces	1 AFL - 1 Cricket
Buildings	
Function/Meeting Space	No
Toilets	No
Players Changeroom	No
Umpire Changeroom	No
Canteen/Kiosk	No
Kitchen	No
Storage	No
First Aid Room	No
Infrastructure	
Floodlighting	None
Play Equipment	No
Other	Shared with Kinross Primary

Park Bookings

Annual Bookings	Mon	Tue	Wed	Thu	Fri	Sat	Sun
Kinross Primary School	8.00am – 4.00pm	8.00am – 4.00pm	8.00am – 4.00pm	8.00am – 4.00pm	8.00am – 4.00pm		
Winter Bookings	Mon	Tue	Wed	Thu	Fri	Sat	Sun
Nic Corrigan's Soccer			3.00pm – 5.30pm			9.00am – 1.00pm	
Joondalup Kinross Junior Football							8.00am – 12.00pm
Summer Bookings	Mon	Tue	Wed	Thu	Fri	Sat	Sun
Corner Kicks Soccer			3.30pm – 5.30pm			9.00am – 12.30pm	

Clubroom Bookings

Annual Bookings	Mon	Tue	Wed	Thu	Fri	Sat	Sun
Winter Bookings	Mon	Tue	Wed	Thu	Fri	Sat	Sun
Summer Bookings	Mon	Tue	Wed	Thu	Fri	Sat	Sun

10 - CARLTON PARK, CURRAMBINE

	Size	16720m ²
	Current Classification	Neighbourhood Park
	Proposed Classification	Local Sports Park
	Primary Use	AFL - Cricket
	Club Home Base	---
	Number of Playing Surfaces	1 AFL - 1 Cricket
	Buildings	
	Function/Meeting Space	No
	Toilets	No
	Players Changeroom	No
	Umpire Changeroom	No
	Canteen/Kiosk	No
	Kitchen	No
	Storage	No
	First Aid Room	No
	Infrastructure	
	Floodlighting	None
	Play Equipment	Yes
	Other	Shared with Currambine Primary School

Park Bookings

Annual Bookings	Mon	Tue	Wed	Thu	Fri	Sat	Sun
Currambine Primary School	8.00am – 4.00pm	8.00am – 4.00pm	8.00am – 4.00pm	8.00am – 4.00pm	8.00am – 4.00pm		
Winter Bookings	Mon	Tue	Wed	Thu	Fri	Sat	Sun
Joondalup Kinross Junior Football	4.00pm – 5.30pm	4.00pm – 5.30pm	4.00pm – 5.30pm	4.00pm – 5.30pm	4.00pm – 5.30pm		8.00am – 1.00pm
Summer Bookings	Mon	Tue	Wed	Thu	Fri	Sat	Sun
Joondalup Kinross Junior Cricket	4.00pm – 6.30pm	4.00pm – 6.30pm	4.00pm – 6.30pm	4.00pm – 6.30pm	4.00pm – 6.30pm	8.00am – 12.00pm	8.00am – 12.00pm

Clubroom Bookings

Annual Bookings	Mon	Tue	Wed	Thu	Fri	Sat	Sun
Winter Bookings	Mon	Tue	Wed	Thu	Fri	Sat	Sun
Summer Bookings	Mon	Tue	Wed	Thu	Fri	Sat	Sun

11 - CHARONIA PARK, MULLALOO



Size	39523m ² (City managed land only)
Current Classification	Neighbourhood Park
Proposed Classification	Local Sports Park
Primary Use	Soccer
Club Home Base	Joondalup United Football Club
Number of Playing Surfaces	1 Soccer
Buildings	
Function/Meeting Space	No
Toilets	Yes – In Block
Players Changeroom	No
Umpire Changeroom	No
Canteen/Kiosk	No
Kitchen	No
Storage	No
First Aid Room	No
Infrastructure	
Floodlighting	None
Play Equipment	Yes
Other	Shared with Mullaloo Heights Primary

Park Bookings

Annual Bookings	Mon	Tue	Wed	Thu	Fri	Sat	Sun
Mullaloo Heights Primary School	8.00am – 4.00pm	8.00am – 4.00pm	8.00am – 4.00pm	8.00am – 4.00pm	8.00am – 4.00pm		
CMD Fitness	9.00am – 11.00am 5.00pm – 7.00pm	9.00am – 11.00am 5.00pm – 7.00pm	9.00am – 11.00am 5.00pm – 7.00pm	9.00am – 11.00am 5.00pm – 7.00pm	9.00am – 11.00am 5.00pm – 7.00pm	2.00pm – 4.00pm	8.00am – 11.00am
Winter Bookings	Mon	Tue	Wed	Thu	Fri	Sat	Sun
Joondalup United Football Club (S)							1.00pm – 5.00pm
Joondalup United Football Club (J)							8.30am - 10.00am
Summer Bookings	Mon	Tue	Wed	Thu	Fri	Sat	Sun

Clubroom Bookings

Annual Bookings	Mon	Tue	Wed	Thu	Fri	Sat	Sun
Winter Bookings	Mon	Tue	Wed	Thu	Fri	Sat	Sun
Summer Bookings	Mon	Tue	Wed	Thu	Fri	Sat	Sun

12 & 13 - CHICHESTER PARK, WOODVALE



Size	North – 50843m ² (City managed land only) South – 58372m ²
Current Classification	Local Park
Proposed Classification	District Sports Park
Primary Use	Soccer - Cricket
Club Home Base	Kingsley Soccer Club
Number of Playing Surfaces	3 Soccer - 1 AFL - 2 Cricket
Buildings	
Function/Meeting Space	Yes
Toilets	Yes – Public Toilet
Players Changeroom	Yes x 3 (2 with toilets)
Umpire Changeroom	No
Canteen/Kiosk	Yes
Kitchen	Yes
Storage	Yes x 2
First Aid Room	No
Infrastructure	
Floodlighting	North x 2 South x 6 (Australian Standard)
Play Equipment	No
Other	Chichester Park North shared with North Woodvale Primary School

Park Bookings

Annual Bookings	Mon	Tue	Wed	Thu	Fri	Sat	Sun
North - North Woodvale Primary School	8.00am – 4.00pm	8.00am – 4.00pm	8.00am – 4.00pm	8.00am – 4.00pm	8.00am – 4.00pm		
Winter Bookings	Mon	Tue	Wed	Thu	Fri	Sat	Sun
North – Edgewater/Woodvale Junior Football	4.00pm - 7.30pm	4.00pm - 7.30pm	4.00pm - 7.30pm	4.00pm - 7.30pm	4.00pm - 7.30pm		8.00am – 2.00pm
North – WA Christian Football Association (J)						8.00am – 11.00am	
South – WA Christian Football Association (J)					8.00am – 1.00pm		
South – WA Christian Football Association (S)					1.00pm – 5.00pm		
South - Kingsley Soccer Club		6.30pm – 8.30pm	6.00pm – 8.00pm	6.30pm – 8.30pm			10.00am – 6.00pm
Summer Bookings	Mon	Tue	Wed	Thu	Fri	Sat	Sun
North – Kingsley Woodvale Junior Cricket	4.30pm – 6.30pm	4.30pm – 6.30pm	4.30pm – 6.30pm	4.30pm – 6.30pm	4.30pm – 6.30pm	8.00am – 12.00pm	8.00am – 12.00pm
South – Kingsley Woodvale Junior Cricket	4.30pm – 6.30pm	4.30pm – 6.30pm	4.30pm – 6.30pm	4.30pm – 6.30pm	4.30pm – 6.30pm	8.00am – 12.00pm	8.00am – 12.00pm
South – Kingsley Woodvale Cricket (S)						12.00pm – 6.00pm	

Clubroom Bookings

Annual Bookings	Mon	Tue	Wed	Thu	Fri	Sat	Sun
Winter Bookings	Mon	Tue	Wed	Thu	Fri	Sat	Sun
Kingsley Senior Soccer Club		7.30pm – 10.30pm		7.30pm – 11.30pm			8.00am – 6.00pm
WA Christian Football Association						8.00am – 3.00pm	
Summer Bookings	Mon	Tue	Wed	Thu	Fri	Sat	Sun
Sorrento Duncraig Junior Football			7.00pm – 10.00pm (monthly)				
Wanneroo Joondalup T/ball						8.00am – 1.00pm	

14 - CHRISTCHURCH PARK, CURRAMBINE



Size	43713m ²
Current Classification	Local Park
Proposed Classification	Local Sports Park
Primary Use	Softball Touch Rugby
Club Home Base	Pirates Softball
Number of Playing Surfaces	1
Buildings	
Function/Meeting Space	No
Toilets	Yes – Block
Players Changeroom	No
Umpire Changeroom	No
Canteen/Kiosk	No
Kitchen	No
Storage	No
First Aid Room	No
Infrastructure	
Floodlighting	2
Play Equipment	Yes
Other	---

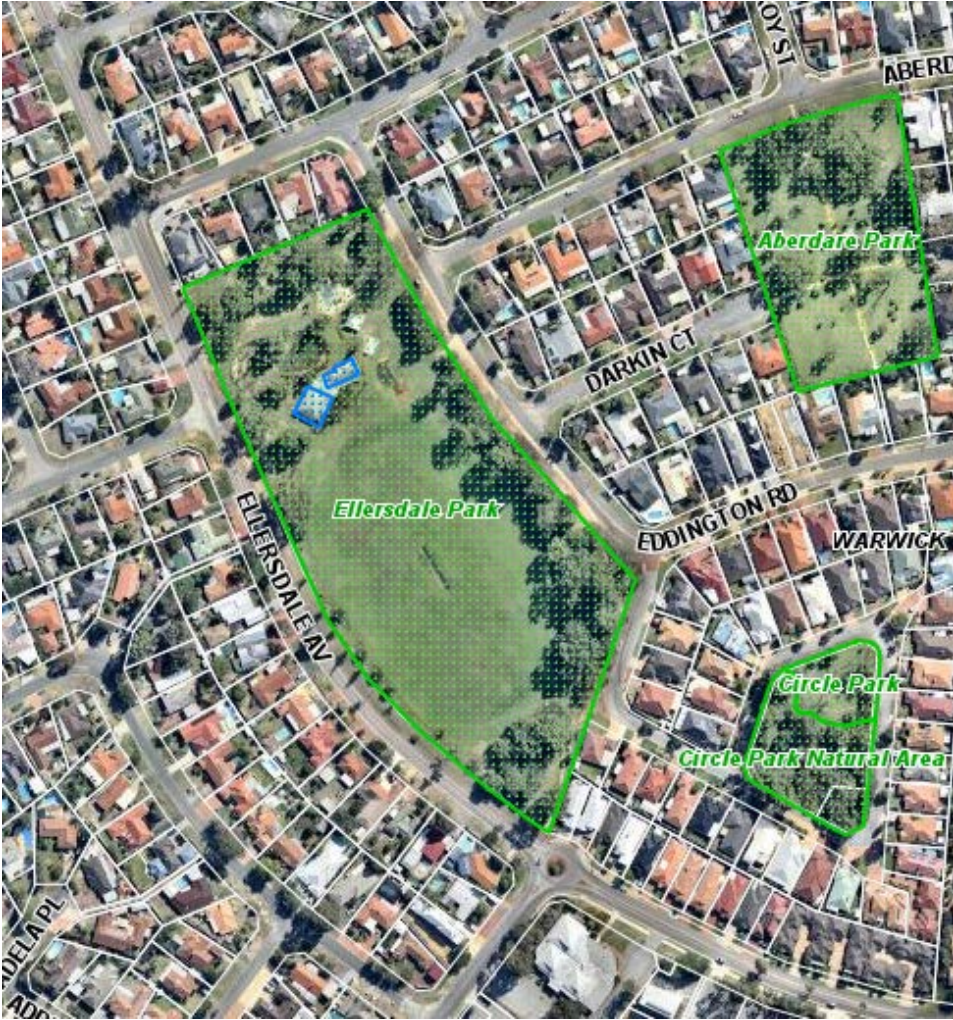
Park Bookings

Annual Bookings	Mon	Tue	Wed	Thu	Fri	Sat	Sun
Winter Bookings	Mon	Tue	Wed	Thu	Fri	Sat	Sun
Pirates Softball							12.00pm – 5.30pm
Dennis Skillen Social Touch Rugby			6.30pm – 8.30pm				
Summer Bookings	Mon	Tue	Wed	Thu	Fri	Sat	Sun
Dennis Skillen Social Touch Rugby			6.30pm – 8.30pm				

Clubroom Bookings

Annual Bookings	Mon	Tue	Wed	Thu	Fri	Sat	Sun
Winter Bookings	Mon	Tue	Wed	Thu	Fri	Sat	Sun
Summer Bookings	Mon	Tue	Wed	Thu	Fri	Sat	Sun

15 - ELLERSDALE PARK, WARWICK



Size	35832m ²
Current Classification	Local Park
Proposed Classification	Local Sports Park
Primary Use	AFL - Cricket
Club Home Base	Warwick Greenwood Junior Football Club Warwick Greenwood Cricket Club Warwick Greenwood Junior Cricket Club
Number of Playing Surfaces	1 AFL - 1 Cricket
Buildings	
Function/Meeting Space	Yes
Toilets	Yes – in clubroom and block
Players Changeroom	Yes x 2
Umpire Changeroom	No
Canteen/Kiosk	Yes
Kitchen	Ye
Storage	Yes x 3
First Aid Room	No
Infrastructure	
Floodlighting	2
Play Equipment	Yes
Other	---

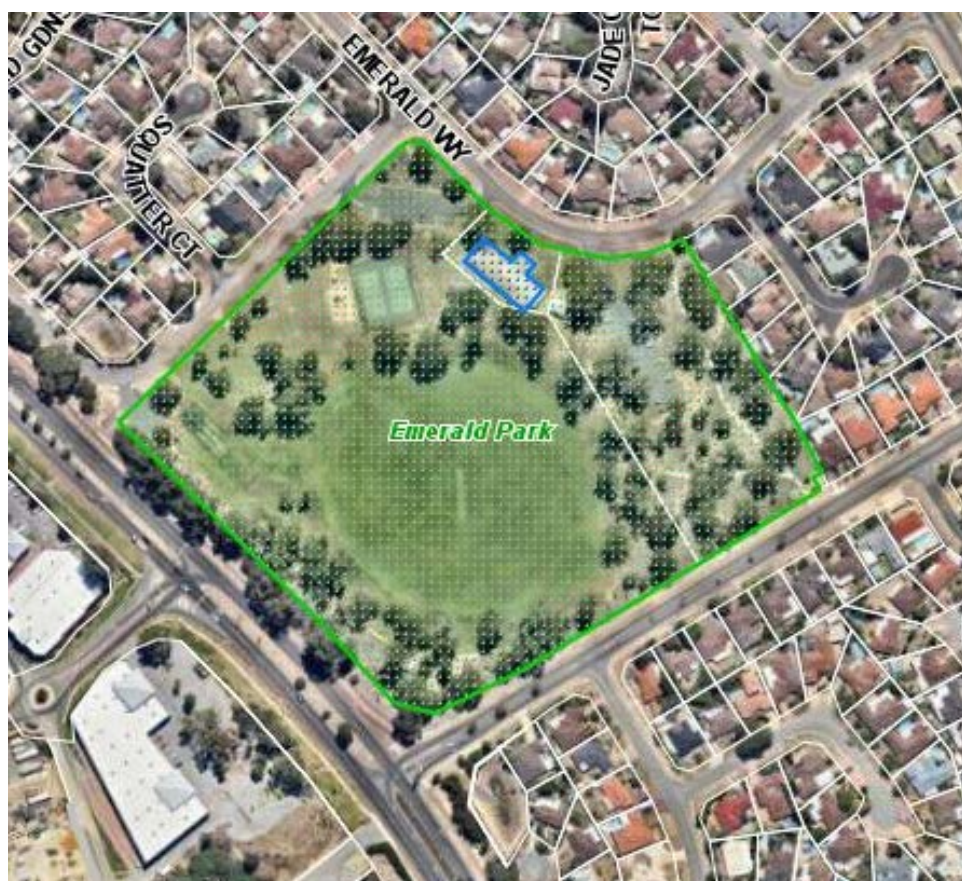
Park Bookings

Annual Bookings	Mon	Tue	Wed	Thu	Fri	Sat	Sun
Winter Bookings	Mon	Tue	Wed	Thu	Fri	Sat	Sun
Warwick Greenwood Junior Football	4.00pm – 7.30pm	4.00pm – 7.30pm	4.00pm – 7.30pm	4.00pm – 7.30pm	4.00pm – 7.30pm	8.00am – 2.00pm	8.00am – 5.00pm
Summer Bookings	Mon	Tue	Wed	Thu	Fri	Sat	Sun
Warwick Greenwood Junior Cricket	4.00pm – 6.00pm	4.00pm – 6.00pm	4.00pm – 6.00pm	4.00pm – 6.00pm	4.00pm – 6.00pm	8.00am – 12.00pm	8.00am – 12.00pm
Warwick Greenwood Cricket Club (S)						12.30pm – 6.30pm	

Clubroom Bookings

Annual Bookings	Mon	Tue	Wed	Thu	Fri	Sat	Sun
Mahjong Club	10.00am – 3.00pm						
Arthritis Foundation of WA			9.45am – 12.45pm				
Winter Bookings	Mon	Tue	Wed	Thu	Fri	Sat	Sun
Warwick Greenwood Junior Football			4.00pm – 7.30pm			8.00am – 3.00pm	8.00am – 6.00pm
Summer Bookings	Mon	Tue	Wed	Thu	Fri	Sat	Sun
Warwick Greenwood Junior Cricket	6.45pm – 10.30pm		6.30pm – 9.30pm				
Warwick Greenwood Cricket Club (S)						1.00pm – 6.30pm	

16 - EMERALD PARK, EDGEWATER



Size	63761m ²
Current Classification	Local Park
Proposed Classification	Local Sports Park
Primary Use	AFL - Cricket
Club Home Base	Edgewater/Woodvale Junior Football Club ECU Football Club Edgewater Senior Cricket Club
Number of Playing Surfaces	1 AFL - 1 Cricket
Buildings	
Function/Meeting Space	Yes
Toilets	Yes – In Main Hall & Public Toilet
Players Changeroom	Yes – 2
Umpire Changeroom	No
Canteen/Kiosk	Yes
Kitchen	Yes x 2
Storage	Yes x 6
First Aid Room	No
Infrastructure	
Floodlighting	5
Play Equipment	Yes
Other	Tennis Courts


Park Bookings

Annual Bookings	Mon	Tue	Wed	Thu	Fri	Sat	Sun
Winter Bookings	Mon	Tue	Wed	Thu	Fri	Sat	Sun
Edgewater/Woodvale Junior Football	4.00pm – 7.30pm	4.00pm – 7.30pm	4.00pm – 7.30pm	4.00pm – 7.30pm	4.00pm – 7.30pm	8.00am – 12.00pm	8.00am – 6.00pm
West Perth District Development Council			5.30pm – 7.00pm				
ECU Football (S)		7.00pm – 9.00pm		7.00pm – 9.00pm			
Summer Bookings	Mon	Tue	Wed	Thu	Fri	Sat	Sun
Edgewater Senior Cricket		5.00pm – 7.30pm		5.00pm – 7.30pm		12.00pm – 6.00pm	
ECU Student Activities				3.00pm – 4.30pm			

Clubroom Bookings

Annual Bookings	Mon	Tue	Wed	Thu	Fri	Sat	Sun
Edgewater Out of School Care	7.00am – 8.00am 3.00pm – 5.30pm	7.00am – 8.00am 3.00pm – 5.30pm	7.00am – 8.00am 3.00pm – 5.30pm	7.00am – 8.00am 3.00pm – 5.30pm	7.00am – 8.00am 3.00pm – 5.30pm		
Tai Chi @ The Beach	5.30pm – 7.00pm						
Country Women Association		8.00am – 2.00pm					
Northern Lights Toastmasters		6.30pm – 9.30pm					
Ocean Reef RSL Sub Branch			8.30am – 1.00pm				
Emerald Park Craft Group				8.30am – 12.30pm			
Winter Bookings	Mon	Tue	Wed	Thu	Fri	Sat	Sun
Edgewater/Woodvale Junior Football						8.00am – 12.00pm	8.00am – 6.00pm
Summer Bookings	Mon	Tue	Wed	Thu	Fri	Sat	Sun

17 - FALKLANDS PARK, KINROSS

	Size	50082m ²
	Current Classification	Local Park
	Proposed Classification	Local Sports Park
	Primary Use	AFL - Cricket
	Club Home Base	Currambine Football Club
	Number of Playing Surfaces	1 AFL - 1 Cricket
	Buildings	
	Function/Meeting Space	No
	Toilets	Yes – Public Toilet
	Players Changeroom	No
	Umpire Changeroom	No
	Canteen/Kiosk	No
	Kitchen	No
	Storage	No
	First Aid Room	No
	Infrastructure	
	Floodlighting	4 x 50Lux (Australian Standard)
	Play Equipment	Yes
	Other	Shared use with Kinross College

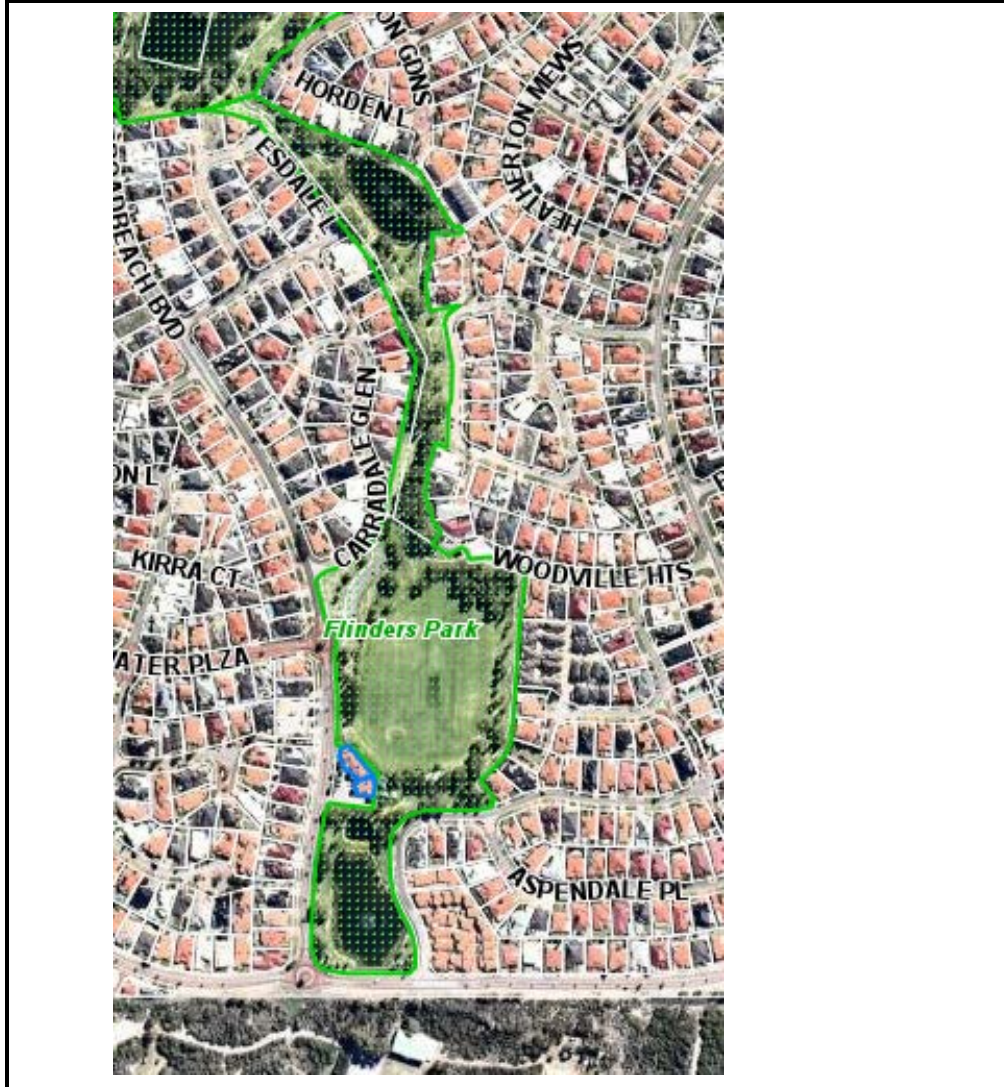
Park Bookings

Annual Bookings	Mon	Tue	Wed	Thu	Fri	Sat	Sun
Kinross College	8.00am – 4.00pm	8.00am – 4.00pm	8.00am – 4.00pm	8.00am – 4.00pm	8.00am – 4.00pm		
Rebel Fitness	6.00am – 7.00am 9.15am – 10.15am 5.15am – 7.30pm	6.00am – 7.00am 9.15am – 10.15am 5.15am – 7.30pm	6.00am – 7.00am 9.15am – 10.15am 5.15am – 7.30pm	6.00am – 7.00am 9.15am – 10.15am 5.15am – 7.30pm	6.00am – 7.00am 9.15am – 10.15am 5.15am – 7.30pm	6.00am – 7.00am – 9.15am – 10.15am – 5.15am – 7.30pm	8.00am – 9.00am
Winter Bookings	Mon	Tue	Wed	Thu	Fri	Sat	Sun
Joondalup Kinross Junior Football	4.00pm – 7.00pm	4.00pm – 7.00pm	4.00pm – 7.00pm	4.00pm – 7.00pm	4.00pm – 7.00pm	8.00am – 6.00pm	8.00am – 6.00pm
Currambine FC			7.00pm – 8.30pm				
Summer Bookings	Mon	Tue	Wed	Thu	Fri	Sat	Sun
Joondalup Kinross Junior Cricket	4.00pm – 6.30pm	4.00pm – 6.30pm	4.00pm – 6.30pm	4.00pm – 6.30pm	4.00pm – 6.30pm	8.00am – 12.00pm	8.00am – 12.00pm
Joondalup Kinross Senior Cricket						12.00pm – 6.30pm	

Clubroom Bookings

Annual Bookings	Mon	Tue	Wed	Thu	Fri	Sat	Sun
Winter Bookings	Mon	Tue	Wed	Thu	Fri	Sat	Sun
Summer Bookings	Mon	Tue	Wed	Thu	Fri	Sat	Sun

18 - FLINDERS PARK, HILLARYS



Size	32175m ²
Current Classification	Local Park
Proposed Classification	Local Mixed-Use Park
Primary Use	Soccer - Cricket
Club Home Base	Hillarys Football Club
Number of Playing Surfaces	1 Soccer - 1 Cricket
Buildings	
Function/Meeting Space	Yes
Toilets	Yes – In Clubroom
Players Changeroom	Yes x 2
Umpire Changeroom	No
Canteen/Kiosk	No
Kitchen	Yes
Storage	Yes x 3
First Aid Room	No
Infrastructure	
Floodlighting	2
Play Equipment	Yes
Other	---

Park Bookings

Annual Bookings	Mon	Tue	Wed	Thu	Fri	Sat	Sun
Winter Bookings	Mon	Tue	Wed	Thu	Fri	Sat	Sun
Hillarys FC		6.30pm – 8.30pm		6.30pm – 8.30pm			11.00am – 4.00pm
Summer Bookings	Mon	Tue	Wed	Thu	Fri	Sat	Sun
North Coast Triathlon Club		6.00pm – 7.00pm		6.00pm – 7.00pm			
Whitford Junior Cricket			4.30pm – 6.30pm		4.30pm – 6.30pm		
Hillarys FC		6.45pm – 8.45pm		6.45pm – 8.45pm			
Ocean Ridge Senior Cricket						12.00pm – 6.30pm	

Clubroom Bookings

Annual Bookings	Mon	Tue	Wed	Thu	Fri	Sat	Sun
Kallaroo Embroidery Group	10.30am – 2.30pm						
Wanneroo Stamp Club	7.15pm – 9.15pm						
The Armoury Martial Arts		6.30pm – 8.00pm		6.30pm – 8.00pm		10.30am – 12.00pm	
Hillarys and Districts National			9.00am – 12.00pm				
Live Well Physiotherapy			7.15pm – 8.15pm				
KIRA Incorporated					10.00am – 11.30am		
Flinders Park Community Church							9.00am – 12.30pm
Winter Bookings	Mon	Tue	Wed	Thu	Fri	Sat	Sun
Summer Bookings	Mon	Tue	Wed	Thu	Fri	Sat	Sun
Ocean Ridge Senior Cricket						3.00pm – 3.30pm	

19 - FORREST PARK, PADBURY



Size	30954m ²
Current Classification	Local Park
Proposed Classification	Local Sports Park
Primary Use	Soccer - AFL - Grid Iron
Club Home Base	West Coast Wolverines (J&S) Northern Warriors Veterans Football Club
Number of Playing Surfaces	1 Soccer - 1 AFL - 1 Grid Iron
Buildings	
Function/Meeting Space	Yes
Toilets	Yes – In Clubroom
Players Changeroom	Yes x 2
Umpire Changeroom	No
Canteen/Kiosk	Yes
Kitchen	Yes
Storage	Yes x 3
First Aid Room	No
Infrastructure	
Floodlighting	4
Play Equipment	Yes
Other	---

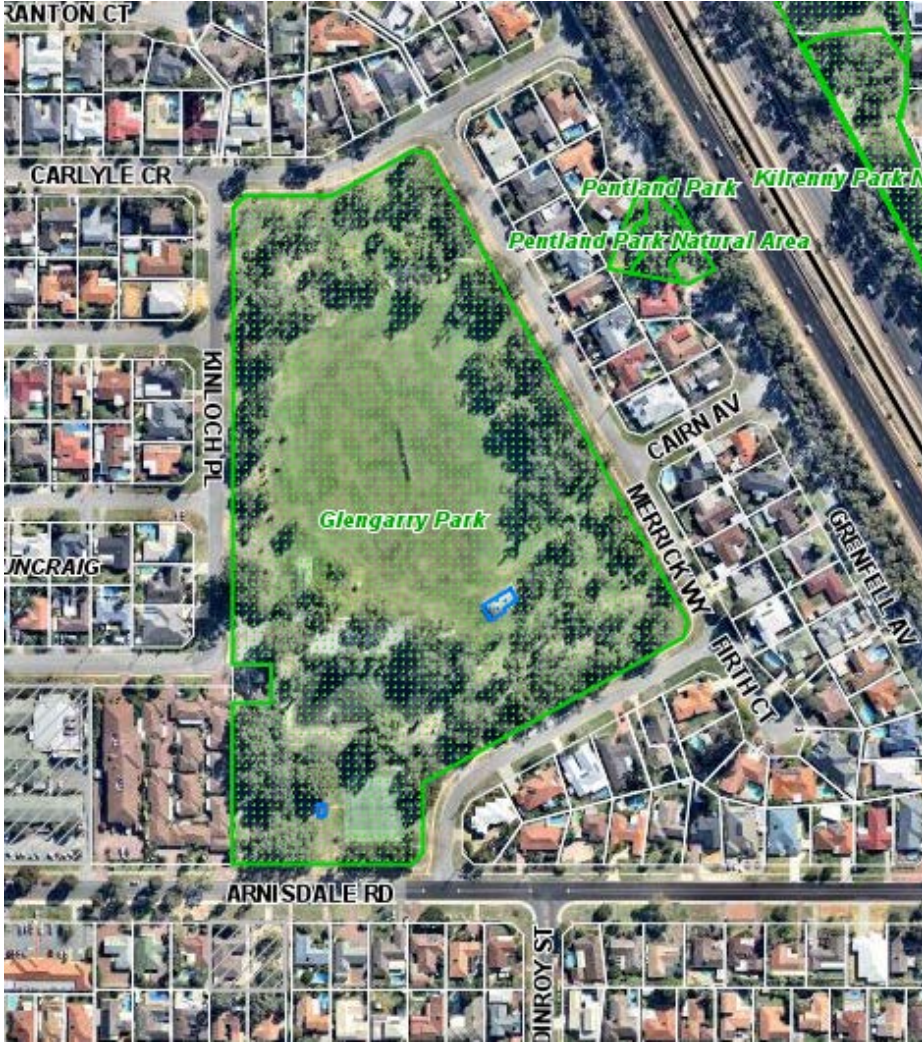
Park Bookings

Annual Bookings	Mon	Tue	Wed	Thu	Fri	Sat	Sun
Winter Bookings	Mon	Tue	Wed	Thu	Fri	Sat	Sun
Whitford Junior Football		4.00pm – 6.00pm		4.00pm – 6.00pm	4.00pm – 6.00pm		8.00am – 6.00pm
Whitford Amateur Football		6.00pm – 8.00pm		6.00pm – 8.00pm			
Joondalup United Football						11.00am – 5.00pm	
Northern Warriors Veterans	5.00pm – 9.00pm		5.00pm – 9.00pm				
Summer Bookings	Mon	Tue	Wed	Thu	Fri	Sat	Sun
Northern Warriors Veterans	5.00pm – 9.00pm		5.00pm – 9.00pm				
West Coast Wolverines (J)		5.30pm – 7.30pm		5.30pm – 7.30pm		12.00pm – 3.00pm	
West Coast Wolverines (S)		7.30pm – 9.00pm		7.30pm – 9.00pm		3.00pm – 6.00pm	

Clubroom Bookings

Annual Bookings	Mon	Tue	Wed	Thu	Fri	Sat	Sun
Eleanor Rooney					9.30am – 10.30am		
Networking Boys					7.00pm – 11.00pm		
Winter Bookings	Mon	Tue	Wed	Thu	Fri	Sat	Sun
Northern Warriors Veterans	5.30pm – 9.00pm		5.30pm – 9.00pm				
Joondalup United Football Club						11.00am – 6.30pm (every 2 nd Sat)	
Summer Bookings	Mon	Tue	Wed	Thu	Fri	Sat	Sun
Northern Warriors Veterans	5.30pm – 9.00pm		5.30pm – 9.00pm				

20 - GLENGARRY PARK, DUNCRAIG



Size	57102m ²
Current Classification	Local Park
Proposed Classification	Local Sports Park
Primary Use	AFL - Cricket
Club Home Base	---
Number of Playing Surfaces	1 AFL - 1 Cricket
Buildings	
Function/Meeting Space	No
Toilets	Yes – Public Toilet
Players Changeroom	No
Umpire Changeroom	No
Canteen/Kiosk	No
Kitchen	No
Storage	No
First Aid Room	No
Infrastructure	
Floodlighting	1
Play Equipment	Yes
Other	Tennis Courts

Park Bookings

Annual Bookings	Mon	Tue	Wed	Thu	Fri	Sat	Sun
Joondalup Dog Training		7.00pm – 9.00pm					
Motivate, Invigorate, Recreate	6.00am – 7.00am 9.30am – 10.30am 6.30pm – 7.30pm	6.00am – 7.00am 9.30am – 10.30am 6.30pm – 7.30pm	6.00am – 7.00am 9.30am – 10.30am 6.30pm – 7.30pm	6.00am – 7.00am 9.30am – 10.30am 6.30pm – 7.30pm	6.00am – 7.00am 9.30am – 10.30am 6.30pm – 7.30pm	7.30am – 8.30am	
Winter Bookings	Mon	Tue	Wed	Thu	Fri	Sat	Sun
Sorrento Duncraig Football	4.00pm – 7.00pm	4.00pm – 7.00pm	4.00pm – 7.00pm	4.00pm – 7.00pm	4.00pm – 7.00pm		
Summer Bookings	Mon	Tue	Wed	Thu	Fri	Sat	Sun
Warwick Greenwood Junior Cricket	4.00pm – 6.30pm		4.00pm – 6.30pm		4.00pm – 6.30pm	8.00am – 12.00pm	8.00am – 12.00pm

Clubroom Bookings

Annual Bookings	Mon	Tue	Wed	Thu	Fri	Sat	Sun
Winter Bookings	Mon	Tue	Wed	Thu	Fri	Sat	Sun
Summer Bookings	Mon	Tue	Wed	Thu	Fri	Sat	Sun

21 - HAWKER PARK, WARWICK



Size	46782m ²
Current Classification	Neighbourhood Park
Proposed Classification	Local Sports Park
Primary Use	AFL - Cricket
Club Home Base	---
Number of Playing Surfaces	1 AFL - 1 Cricket
Buildings	
Function/Meeting Space	No
Toilets	Yes – Public Toilet
Players Changeroom	No
Umpire Changeroom	No
Canteen/Kiosk	No
Kitchen	No
Storage	No
First Aid Room	No
Infrastructure	
Floodlighting	2
Play Equipment	Yes
Other	---

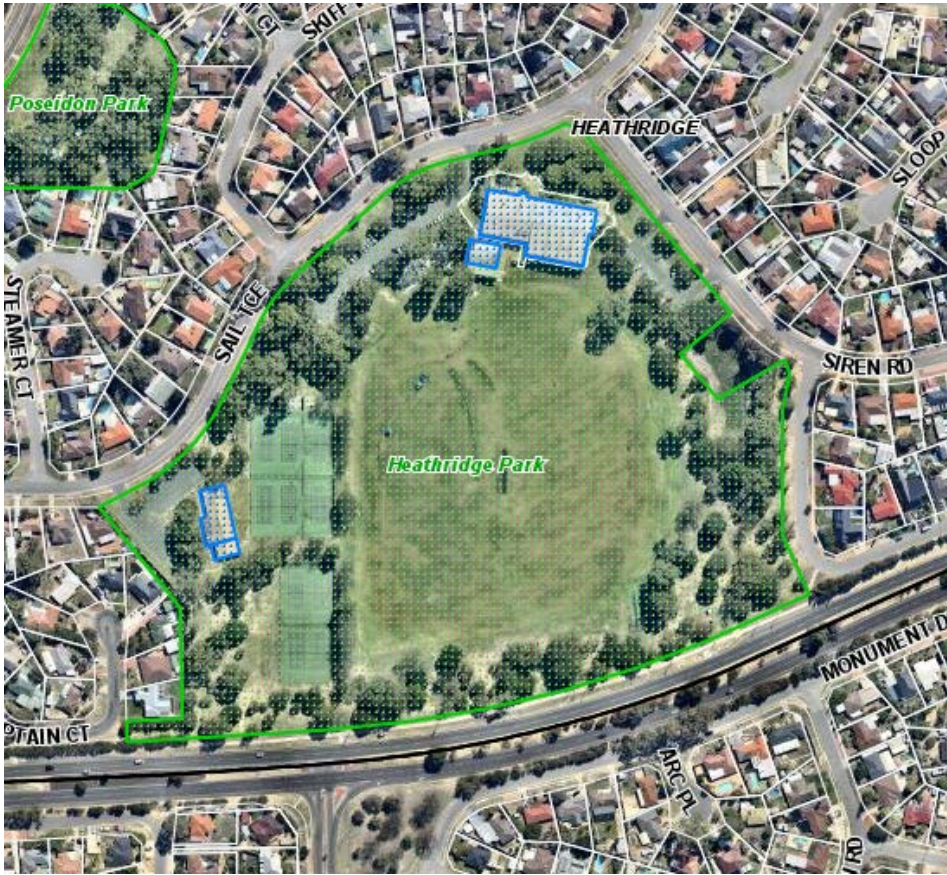
Park Bookings

Annual Bookings	Mon	Tue	Wed	Thu	Fri	Sat	Sun
Winter Bookings	Mon	Tue	Wed	Thu	Fri	Sat	Sun
Warwick Greenwood Junior Football	4.30pm – 6.30pm	4.00pm – 7.30pm	4.00pm – 7.30pm	4.00pm – 7.30pm	4.00pm – 7.30pm		8.00am – 3.00pm
Summer Bookings	Mon	Tue	Wed	Thu	Fri	Sat	Sun
Greenwood Cricket Club (S)						12.00pm – 6.30pm	
Warwick Greenwood Junior Cricket	4.00pm – 6.00pm	4.00pm – 6.00pm	4.00pm – 6.00pm	4.00pm – 6.00pm	4.00pm – 6.00pm	8.00am – 12.00pm	8.00am – 12.00pm
Subiaco Football Club	4.30pm – 7.00pm		4.30pm – 7.00pm		4.30pm – 7.00pm		

Clubroom Bookings

Annual Bookings	Mon	Tue	Wed	Thu	Fri	Sat	Sun
Winter Bookings	Mon	Tue	Wed	Thu	Fri	Sat	Sun
Summer Bookings	Mon	Tue	Wed	Thu	Fri	Sat	Sun

22 - HEATHRIDGE PARK, HEATHRIDGE



Size	96096m ²
Current Classification	Local Park
Proposed Classification	District Sports Park
Primary Use	AFL – Cricket
Club Home Base	Ocean Ridge Senior Cricket Club Ocean Ridge Junior Cricket Club Ocean Ridge Amateur Football Club Ocean Ridge Junior Football Club
Number of Playing Surfaces	1 AFL - 1 Cricket
Buildings	
Function/Meeting Space	Yes
Toilets	Yes - within Heathridge Leisure Centre when booked
Players Changeroom	Yes
Umpire Changeroom	No
Canteen/Kiosk	Yes
Kitchen	Yes
Storage	Yes
First Aid Room	No
Infrastructure	
Floodlighting	4 – 100Lux (Australian Standard)
Play Equipment	Yes
Other	Tennis Courts

Park Bookings

Annual Bookings	Mon	Tue	Wed	Thu	Fri	Sat	Sun
GI Joe	6.00am – 8.30am 5.00pm – 8.00pm	6.00am – 8.30am 5.00pm – 8.00pm	6.00am – 8.30am 5.00pm – 8.00pm	6.00am – 8.30am 5.00pm – 8.00pm	6.00am – 8.30am 5.00pm – 8.00pm		
Winter Bookings	Mon	Tue	Wed	Thu	Fri	Sat	Sun
Ocean Ridge Junior Football	5.00pm – 6.00pm	4.30pm – 6.00pm	4.30pm – 6.00pm	4.30pm – 6.00pm	4.30pm – 6.00pm	8.00am – 9.30am	8.00am – 5.30pm
Joondalup Womens' Football	6.00pm – 8.15pm		6.00pm – 8.15pm				
Ocean Ridge Amateur Football		6.00pm – 8.00pm		6.00pm – 8.00pm		10.30am – 4.45pm	
Summer Bookings	Mon	Tue	Wed	Thu	Fri	Sat	Sun
Ocean Ridge Junior Cricket	4.30pm – 6.30pm		4.30pm – 6.30pm		4.30pm – 6.30pm	8.00am – 12.00pm	8.00am – 12.00pm
Ocean Ridge Senior Cricket		5.00pm – 6.30pm		5.00pm – 7.00pm		12.00pm – 6.00pm	

Clubroom Bookings

Annual Bookings	Mon	Tue	Wed	Thu	Fri	Sat	Sun
Winter Bookings	Mon	Tue	Wed	Thu	Fri	Sat	Sun
Ocean Ridge Amateur Football				7.00pm – 10.30pm		10.30am – 10.30pm	
Ocean Ridge Junior Football					4.00pm – 12.00am	8.00am – 9.30am	8.00am – 6.00pm
Summer Bookings	Mon	Tue	Wed	Thu	Fri	Sat	Sun
Ocean Ridge Senior Cricket				5.00pm – 10.30pm		12.00pm – 10.30pm	

23 - HILLARYS PARK, HILLARYS



Size	70734m ²
Current Classification	Neighbourhood Park
Proposed Classification	Local Sports Park
Primary Use	AFL
Club Home Base	---
Number of Playing Surfaces	1 AFL
Buildings	
Function/Meeting Space	No
Toilets	Yes – Public Toilet
Players Changeroom	Yes
Umpire Changeroom	No
Canteen/Kiosk	No
Kitchen	No
Storage	No
First Aid Room	No
Infrastructure	
Floodlighting	2
Play Equipment	Yes
Other	---

Park Bookings

Annual Bookings	Mon	Tue	Wed	Thu	Fri	Sat	Sun
Winter Bookings	Mon	Tue	Wed	Thu	Fri	Sat	Sun
Whitford Junior Football Club	4.00pm – 7.00pm	4.00pm – 7.00pm	4.00pm – 7.00pm	4.00pm – 7.00pm	4.00pm – 7.00pm		
Summer Bookings	Mon	Tue	Wed	Thu	Fri	Sat	Sun

Clubroom Bookings

Annual Bookings	Mon	Tue	Wed	Thu	Fri	Sat	Sun
Winter Bookings	Mon	Tue	Wed	Thu	Fri	Sat	Sun
Summer Bookings	Mon	Tue	Wed	Thu	Fri	Sat	Sun

24 & 25 - ILUKA DISTRICT OPEN SPACE, ILUKA



Size	88455m ²
Current Classification	District Park
Proposed Classification	District Sports Park
Primary Use	Soccer - Cricket - Hockey
Club Home Base	Joondalup Districts Cricket Club (J&S) Joondalup Lakers Hockey Club (J&S) Joondalup City Football Club (J&S)
Number of Playing Surfaces	2 Cricket - 2 Hockey - 2 Soccer
Buildings	
Function/Meeting Space	No
Toilets	Yes – lessee allows access
Players Changeroom	Yes
Umpire Changeroom	Yes
Canteen/Kiosk	No
Kitchen	No
Storage	Yes
First Aid Room	No
Infrastructure	
Floodlighting	East – 5 x 50Lux (Australian Standard) West – 5 x 50Lux (Australian Standard)
Play Equipment	No
Other	---

Park Bookings

Annual Bookings	Mon	Tue	Wed	Thu	Fri	Sat	Sun
Winter Bookings	Mon	Tue	Wed	Thu	Fri	Sat	Sun
East – Joondalup City Football Club (J)	4.00pm – 8.30pm	4.00pm – 8.30pm	4.00pm – 8.30pm	4.00pm – 8.30pm	4.00pm – 8.30pm	10.00am – 5.00pm	8.00am – 5.00pm
East – Joondalup City Football Club (S)		6.30pm – 8.15pm	6.30pm – 8.15pm	6.30pm – 8.15pm	1.00pm – 5.00pm	12.00pm – 5.00pm	
East - Joondalup Districts Cricket Club	6.00pm – 8.30pm						
West – Joondalup Lakers Hockey Club (J)	4.00pm – 8.30pm	4.00pm – 8.30pm	4.00pm – 8.30pm	4.00pm – 8.30pm	4.00pm – 7.00pm	8.00am – 12.30pm	
West – Joondalup Lakers Hockey Club (S)						1.30pm – 5.30pm	
West – Joondalup City Football Club (J)							8.00am – 5.00pm
Summer Bookings	Mon	Tue	Wed	Thu	Fri	Sat	Sun
East – Joondalup District Cricket (S)						11.00am – 6.00pm	11.00am – 6.00pm
West – Joondalup District Cricket (J)	4.00pm – 7.00pm	4.00pm – 6.00pm	4.00pm – 7.30pm	4.00pm – 6.00pm	4.00pm – 7.00pm	8.00am – 11.00am	8.00am – 11.00am
West – Joondalup District Cricket (S)		5.00pm – 7.00pm		5.00pm – 7.00pm		11.00am – 6.00pm	11.00am – 6.00pm

Clubroom Bookings

Annual Bookings	Mon	Tue	Wed	Thu	Fri	Sat	Sun
Winter Bookings	Mon	Tue	Wed	Thu	Fri	Sat	Sun
Summer Bookings	Mon	Tue	Wed	Thu	Fri	Sat	Sun

26 & 27 - JAMES COOK PARK, HILLARYS



Size	46957m ²
Current Classification	District Park
Proposed Classification	Local Sports Park
Primary Use	AFL - Rugby - Cricket
Club Home Base	---
Number of Playing Surfaces	2 Junior Cricket
Buildings	
Function/Meeting Space	No
Toilets	Yes – Public Toilet
Players Changeroom	No
Umpire Changeroom	No
Canteen/Kiosk	No
Kitchen	No
Storage	Yes
First Aid Room	No
Infrastructure	
Floodlighting	North – 1 South – 0
Play Equipment	Yes
Other	---

Park Bookings

Annual Bookings	Mon	Tue	Wed	Thu	Fri	Sat	Sun
Winter Bookings	Mon	Tue	Wed	Thu	Fri	Sat	Sun
North – Whitford Junior Football		4.00pm – 6.00pm	4.00pm – 5.00pm	4.00pm – 6.00pm		8.00am – 3.00pm	
North - Nedlands Rugby Union Club			5.00pm – 6.00pm				
South – Whitford Junior Football		4.00pm – 6.00pm	4.00pm – 6.00pm	4.00pm – 6.00pm		8.00am – 3.00pm	
Summer Bookings	Mon	Tue	Wed	Thu	Fri	Sat	Sun
North – Whitford Junior Cricket	4.00pm – 6.30pm	4.00pm – 6.30pm	4.00pm – 6.30pm	4.00pm – 6.30pm	4.00pm – 6.30pm	8.00am – 12.00pm	8.00am – 12.00pm
South – Whitford Junior Cricket	4.00pm – 6.30pm	4.00pm – 6.30pm	4.00pm – 6.30pm	4.00pm – 6.30pm	4.00pm – 6.30pm	8.00am – 12.00pm	8.00am – 12.00pm

Clubroom Bookings

Annual Bookings	Mon	Tue	Wed	Thu	Fri	Sat	Sun
Winter Bookings	Mon	Tue	Wed	Thu	Fri	Sat	Sun
Summer Bookings	Mon	Tue	Wed	Thu	Fri	Sat	Sun

28 - JUNIPER PARK, DUNCRAIG



Size	46563m ²
Current Classification	Neighbourhood Park
Proposed Classification	Local Sports Park
Primary Use	AFL - Cricket
Club Home Base	---
Number of Playing Surfaces	1 AFL - 1 Cricket
Buildings	
Function/Meeting Space	No
Toilets	Yes – Public Toilets
Players Changeroom	No
Umpire Changeroom	No
Canteen/Kiosk	No
Kitchen	No
Storage	No
First Aid Room	No
Infrastructure	
Floodlighting	1
Play Equipment	No
Other	---

Park Bookings

Annual Bookings	Mon	Tue	Wed	Thu	Fri	Sat	Sun
Winter Bookings	Mon	Tue	Wed	Thu	Fri	Sat	Sun
Carine Junior Football		4.30pm – 6.30pm	5.30pm - 6.30pm	4.30pm – 6.00pm			
Summer Bookings	Mon	Tue	Wed	Thu	Fri	Sat	Sun
Warwick Greenwood Junior Cricket		4.00pm – 6.30pm	4.00pm – 6.30pm	4.00pm – 6.30pm		8.00am – 12.00pm	8.00am – 12.00pm
Warwick Greenwood Cricket (S)						12.30pm – 6.30pm	

Clubroom Bookings

Annual Bookings	Mon	Tue	Wed	Thu	Fri	Sat	Sun
Winter Bookings	Mon	Tue	Wed	Thu	Fri	Sat	Sun
Summer Bookings	Mon	Tue	Wed	Thu	Fri	Sat	Sun

29 & 30 - KINGSLEY PARK, KINGSLEY



Size	79620m ²
Current Classification	Local Park
Proposed Classification	District Sports Park
Primary Use	AFL - Cricket
Club Home Base	Kingsley Amateur Football Club Kingsley Junior Football Club Kingsley Woodvale Junior Cricket Kingsley Woodvale Cricket Club
Number of Playing Surfaces	1 Cricket - 1 AFL
Buildings	
Function/Meeting Space	Yes
Toilets	Yes – In Clubrooms and Park
Players Changeroom	Yes x 2 with toilet
Umpire Changeroom	Yes
Canteen/Kiosk	No
Kitchen	Yes x 2
Storage	Yes x 12
First Aid Room	No
Infrastructure	
Floodlighting	Senior – 4 Junior – 2
Play Equipment	No
Other	Shared use with Creaney Primary School

Park Bookings

Annual Bookings	Mon	Tue	Wed	Thu	Fri	Sat	Sun
Creaney Primary School	8.00am – 4.00pm	8.00am – 4.00pm	8.00am – 4.00pm	8.00am – 4.00pm	8.00am – 4.00pm		
Step into Life	6.00am – 10.30am 5.15pm – 7.30pm	6.00am – 10.30am 5.15pm – 7.30pm	6.00am – 10.30am 5.15pm – 7.30pm	6.00am – 10.30am 5.15pm – 7.30pm	6.00am – 10.30am 5.15pm – 7.30pm	6.00am – 10.30am	6.00am – 10.30am
Winter Bookings	Mon	Tue	Wed	Thu	Fri	Sat	Sun
Kingsley Junior Football	4.00pm – 6.00pm	4.00pm – 6.00pm	4.00pm – 6.00pm	4.00pm – 6.00pm	4.00pm – 6.00pm	8.00am – 10.30am	8.00am – 7.00pm
Kingsley Amateur Football		6.00pm – 8.00pm		6.00pm – 8.00pm		10.03am – 5.30pm	
Summer Bookings	Mon	Tue	Wed	Thu	Fri	Sat	Sun
Kingsley Woodvale Junior Cricket	4.30pm – 6.30pm	4.30pm – 6.30pm	4.30pm – 6.30pm	4.30pm – 6.30pm	4.30pm – 6.30pm		
Kingsley Woodvale Cricket (S)						12.00pm – 6.30pm	
Nets – Kingsley Woodvale Junior Cricket	4.30pm – 6.30pm		4.30pm – 6.30pm		4.30pm – 6.30pm		
Nets – Kingsley Woodvale Cricket (S)		4.30pm – 6.30pm		4.30pm – 7.00pm			

Clubroom Bookings

Annual Bookings	Mon	Tue	Wed	Thu	Fri	Sat	Sun
Hall – Community & Youth Training		8.30am – 2.30pm	8.30am – 2.30pm	8.30am – 2.30pm			
Hall – Community Vision				5.15pm – 6.45pm			
Sport Hall – Kingsley Seniors Group		9.00am – 4.00pm	12.00pm – 4.00pm	9.00am – 4.00pm			
Winter Bookings	Mon	Tue	Wed	Thu	Fri	Sat	Sun
Hall – Kingsley Junior Football Club						8.00am – 12.00pm	
Sports Hall – Kingsley Junior Football Club	7.00pm – 9.00pm					8.00am – 10.30am	8.00am – 7.00pm
Sports Hall – Kingsley Amateur Football		6.00pm – 8.00pm		6.00pm – 8.00pm		10.30am – 12.00am	
Sports Hall – Kingsley Woodvale Junior Cricket			6.30pm – 9.30pm				
Summer Bookings	Mon	Tue	Wed	Thu	Fri	Sat	Sun
Sports Hall - Kingsley Woodvale Cricket Club		5.30pm – 7.30pm		5.00pm – 9.00pm		12.30pm – 11.00pm	
Sports Hall - Kingsley Woodvale Junior Cricket					4.30pm – 9.00pm	8.00am – 12.00pm	8.00am – 12.00pm
Sports Hall - Kingsley Junior Football Club			5.30pm – 10.00pm				

31 - KORELLA PARK, MULLALOO



Size	45948m ² (City managed land only)
Current Classification	Neighbourhood Park
Proposed Classification	Local Sports Park
Primary Use	AFL - Cricket - Athletics - Grid Iron
Club Home Base	Kallaroo Cricket Oceanside Little Athletics
Number of Playing Surfaces	1 AFL - 1 Cricket - Athletics Infrastructure
Buildings	
Function/Meeting Space	No
Toilets	Yes – Public toilet
Players Changeroom	No
Umpire Changeroom	No
Canteen/Kiosk	No
Kitchen	No
Storage	Yes
First Aid Room	No
Infrastructure	
Floodlighting	2
Play Equipment	Yes
Other	Shared with Mullaloo Beach Primary School

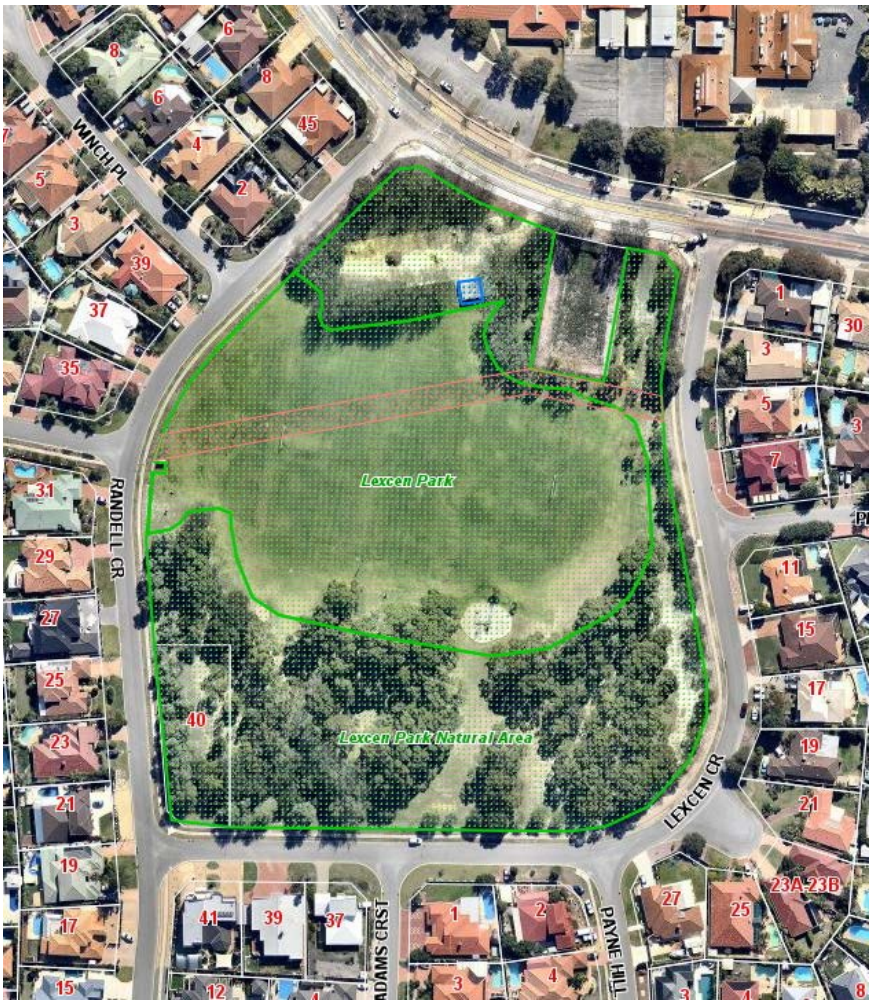
Park Bookings

Annual Bookings	Mon	Tue	Wed	Thu	Fri	Sat	Sun
Mullaloo Beach Primary School	8.00am – 4.00pm	8.00am – 4.00pm	8.00am – 4.00pm	8.00am – 4.00pm	8.00am – 4.00pm		
Winter Bookings	Mon	Tue	Wed	Thu	Fri	Sat	Sun
West Coast Wolverines (J)		5.00pm – 7.00pm		5.00pm – 7.00pm			
West Coast Wolverines (S)		7.00pm – 9.00pm		7.00pm – 9.00pm			
Summer Bookings	Mon	Tue	Wed	Thu	Fri	Sat	Sun
Kallaroo Cricket				4.30pm – 7.30pm		12.00pm – 6.30pm	
Oceanside Little Athletics	4.30pm – 6.30pm	4.30pm – 6.30pm	4.30pm – 6.30pm	4.30pm – 6.30pm			
Ocean Ridge Junior Cricket		4.30pm – 6.30pm	4.30pm – 6.30pm			8.00am – 12.00pm	8.00am – 12.00pm

Clubroom Bookings

Annual Bookings	Mon	Tue	Wed	Thu	Fri	Sat	Sun
Winter Bookings	Mon	Tue	Wed	Thu	Fri	Sat	Sun
Summer Bookings	Mon	Tue	Wed	Thu	Fri	Sat	Sun

32 - LEXCEN PARK, OCEAN REEF



Size	37815m ²
Current Classification	Neighbourhood Park
Proposed Classification	Local Sports Park
Primary Use	Soccer - Dog Training
Club Home Base	Joondalup Dog Training
Number of Playing Surfaces	1 Soccer
Buildings	
Function/Meeting Space	No
Toilets	Yes – Public Toilet
Players Changeroom	No
Umpire Changeroom	No
Canteen/Kiosk	No
Kitchen	No
Storage	Yes
First Aid Room	No
Infrastructure	
Floodlighting	2
Play Equipment	Yes
Other	---

Park Bookings

Annual Bookings	Mon	Tue	Wed	Thu	Fri	Sat	Sun
Joondalup Dog Training							8.00am – 12.00pm
Winter Bookings	Mon	Tue	Wed	Thu	Fri	Sat	Sun
Joondalup City Football (J)	4.00pm – 8.15pm	4.00pm – 8.15pm	4.00pm – 8.15pm	4.00pm – 8.15pm	4.00pm – 8.15pm		
Summer Bookings	Mon	Tue	Wed	Thu	Fri	Sat	Sun
Joondalup City FC (J)	5.00pm – 8.00pm	5.00pm – 8.00pm		5.00pm – 8.00pm			2.00pm – 5.00pm

Clubroom Bookings

Annual Bookings	Mon	Tue	Wed	Thu	Fri	Sat	Sun
Winter Bookings	Mon	Tue	Wed	Thu	Fri	Sat	Sun
Summer Bookings	Mon	Tue	Wed	Thu	Fri	Sat	Sun

33 - LITTORINA PARK, HEATHRIDGE



Size	60463m ² (City managed land only)
Current Classification	Neighbourhood Park
Proposed Classification	Local Sports Park
Primary Use	AFL - Cricket
Club Home Base	---
Number of Playing Surfaces	1 AFL - 1 Cricket
Buildings	
Function/Meeting Space	No
Toilets	No
Players Changeroom	No
Umpire Changeroom	No
Canteen/Kiosk	No
Kitchen	No
Storage	No
First Aid Room	No
Infrastructure	
Floodlighting	2
Play Equipment	No
Other	Shared with Eddystone Primary School

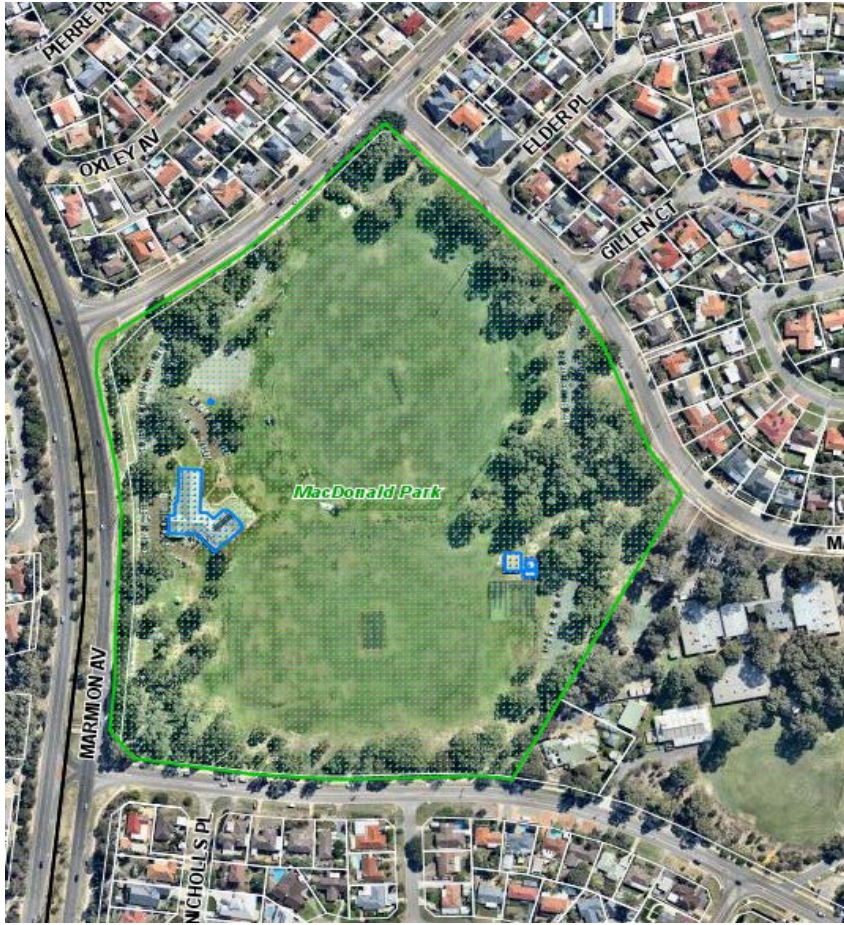
Park Bookings

Annual Bookings	Mon	Tue	Wed	Thu	Fri	Sat	Sun
Eddystone Primary School	8.00am – 4.00pm	8.00am – 4.00pm	8.00am – 4.00pm	8.00am – 4.00pm	8.00am – 4.00pm		
Winter Bookings	Mon	Tue	Wed	Thu	Fri	Sat	Sun
Ocean Ridge Junior Football		4.30pm – 6.30pm	4.30pm – 5.30pm	4.30pm – 6.30pm	4.30pm – 5.30pm		
Summer Bookings	Mon	Tue	Wed	Thu	Fri	Sat	Sun
Edgewater Senior Cricket	5.00pm – 8.00pm	5.00pm – 8.00pm		5.00pm – 8.00pm			2.00pm - 5.00pm

Clubroom Bookings

Annual Bookings	Mon	Tue	Wed	Thu	Fri	Sat	Sun
Winter Bookings	Mon	Tue	Wed	Thu	Fri	Sat	Sun
Summer Bookings	Mon	Tue	Wed	Thu	Fri	Sat	Sun

34 & 35 - MACDONALD PARK, PADBURY



Size	115343m ²
Current Classification	District Park
Proposed Classification	District Sports Park
Primary Use	Hockey - AFL - Cricket Athletics
Club Home Base	Whitfords Junior Football Club Whitford Amateur Football Club Whitfords Hockey Club (J&S) Whitfords Little Athletics
Number of Playing Surfaces	1 Cricket - 1 AFL - 3 Hockey - Athletics Infrastructure
Buildings	
Function/Meeting Space	Fleur Freame Pavillion
Toilets	Yes – In Clubroom and Public Toilets
Players Changeroom	Yes x 4 with toilets and showers
Umpire Changeroom	No
Canteen/Kiosk	No
Kitchen	Yes
Storage	Yes x 14
First Aid Room	No
Infrastructure	
Floodlighting	North – 4 100Lux (Australian Standard) South - 3
Play Equipment	No
Other	---

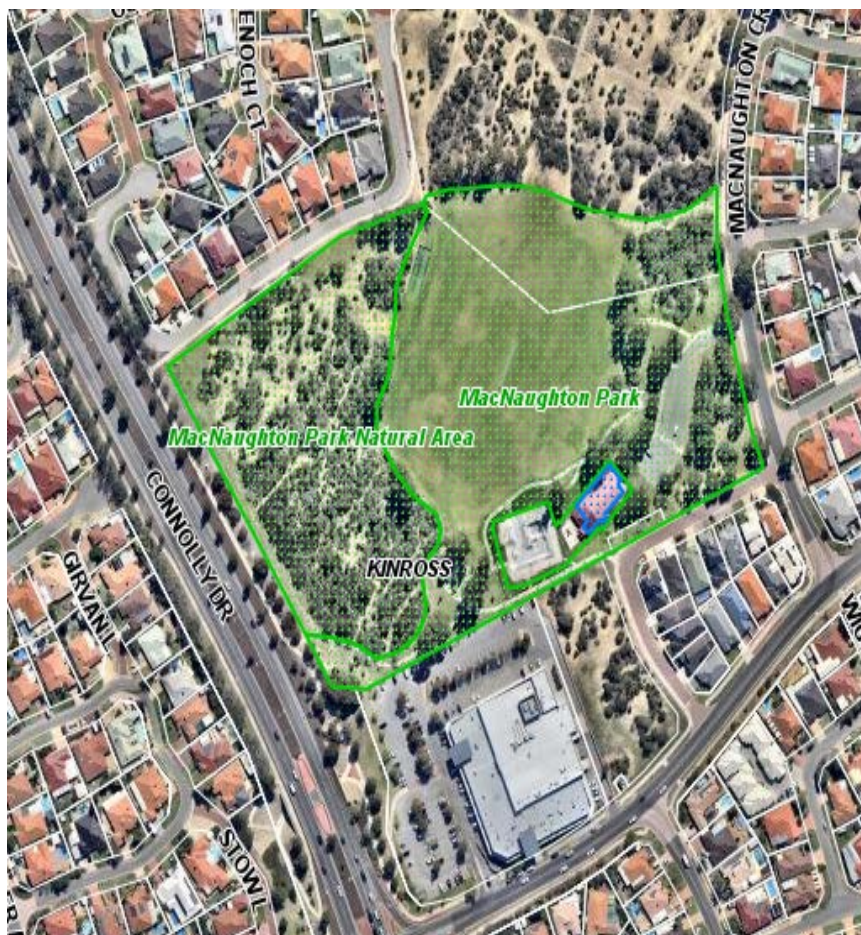
Park Bookings

Annual Bookings	Mon	Tue	Wed	Thu	Fri	Sat	Sun
Padbury Fit Club	9.00am – 10.30am		9.00am – 10.30am		9.00am – 10.30am		
Winter Bookings	Mon	Tue	Wed	Thu	Fri	Sat	Sun
North - Whitfords Junior Football	4.00pm – 8.00pm	4.00pm – 6.00pm	4.00pm – 8.00pm	4.00pm – 6.00pm	4.00pm – 8.00pm		8.00am – 6.00pm
North - Whitford Amateur Football		6.00pm – 8.00pm		6.00pm – 8.00pm		8.00am – 6.00pm	
South - Whitfords Hockey Club (J)		4.00pm – 6.30pm	4.00pm – 6.30pm	4.00pm – 6.30pm		8.00am – 12.00pm	8.00am – 12.00pm
South - Whitfords Hockey Club (S)				6.30pm – 8.00pm		1.30pm – 5.00pm	
Summer Bookings	Mon	Tue	Wed	Thu	Fri	Sat	Sun
North – Whitfords Junior Cricket	4.00pm – 6.30pm	4.00pm – 6.30pm	4.00pm – 6.30pm	4.00pm – 6.30pm	4.00pm – 9.00pm	8.00am – 12.00pm	8.00am – 12.00pm
North – Whitfords Senior Cricket						12.00pm – 6.30pm	
North – Whitfords Little Athletics	5.00pm – 6.00pm			4.00pm – 6.15pm			
South - Whitfords Junior Cricket					4.00pm – 9.00pm	8.00am – 12.00pm	8.00am – 12.00pm
South – Whitfords Senior Cricket		4.30pm – 8.00pm		4.30pm – 8.00pm		12.00pm – 6.30pm	12.00pm – 6.30pm
South – Joondalup District Cricket			4.30pm – 6.30pm			8.00am - 12.00pm	8.00am - 12.00pm (2 x Sundays)

Clubroom Bookings

Annual Bookings	Mon	Tue	Wed	Thu	Fri	Sat	Sun
Function Room - Dominic Yam Fitness 50 Club Winter Booking – Summer Booking -	10.00am – 12.00pm			11.00 - 12.00pm 1.00pm – 2.00pm			
Function Room - Padbury Adventure Guides	4.30pm – 7.00pm						
Lesser Hall – Hillarys Explorer Girl Guides	5.45pm – 8.00pm						
Lesser Hall – Joondalup Bridge Club Inc.	1.00pm – 5.00pm	6.15pm – 10.00pm	6.30pm – 10.30pm	1.00pm – 5.00pm	2.00pm – 5.00pm 6.30pm – 10.00pm		
Lesser Hall – Taoist Tai Chi Society of Australia				9.00am – 12.00pm			
Lesser Hall - Volunteer Task Force Inc.					9.30am – 11.30am		
Winter Bookings	Mon	Tue	Wed	Thu	Fri	Sat	Sun
Function Room - Whitford Amateur Football Club (F)				6.00pm – 12.00am		12.00pm – 12.00am	6.00pm – 9.30pm
Function Room - Whitford Junior Football (F)					5.00pm – 12.00am		8.00am – 6.00pm
Lesser Hall – Whitford Hockey Club (Jnrs) (F)				5.00pm – 7.00pm		8.00am – 12.00pm 5.00pm – 7.00pm	
Lesser Hall - Whitford Hockey Club (Snrs) (F)				7.00pm – 9.00pm		3.00pm – 5.00pm 7.00pm – 9.00pm	
Summer Bookings	Mon	Tue	Wed	Thu	Fri	Sat	Sun
Function Room - Whitfords Junior Cricket (F)		7.30pm – 9.30pm					
Function Room – Whitford Junior Football			7.30pm – 10.30pm				
Function Room – Assoc. Of Independent Retirees				8.30am – 12.30pm			
Function Room - Whitfords & District Cricket Club				5.00pm – 10.00pm		12.00pm – 10.00pm	
Function Room - Jane Jones Zumba Gold					9.15am – 10.30am		

36 – MACNAUGHTON PARK, KINROSS



Size	49792m ²
Current Classification	Local Park
Proposed Classification	Local Sports Park
Primary Use	Soccer - Cricket
Club Home Base	---
Number of Playing Surfaces	1 Cricket - 1 Soccer
Buildings	
Function/Meeting Space	Yes
Toilets	Yes – In Clubroom
Players Changeroom	No
Umpire Changeroom	No
Canteen/Kiosk	Yes
Kitchen	Yes
Storage	Yes x 5
First Aid Room	No
Infrastructure	
Floodlighting	1
Play Equipment	Yes
Other	Skate Park

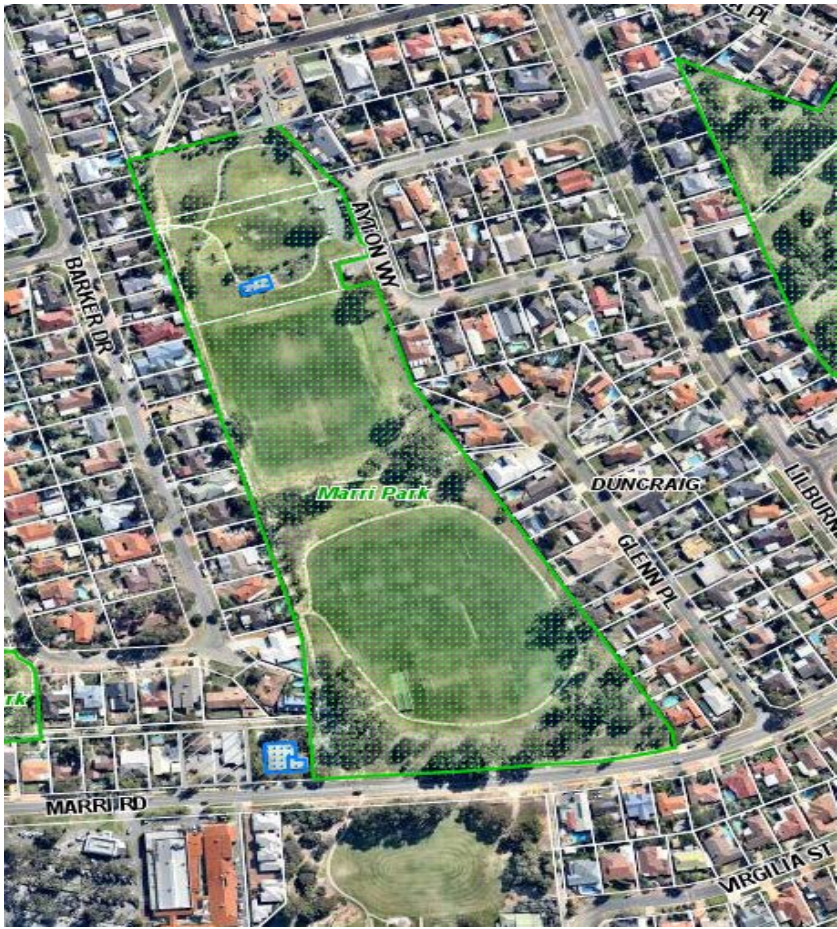
Park Bookings

Annual Bookings	Mon	Tue	Wed	Thu	Fri	Sat	Sun
Rebel Fitness	9.00am – 10.00am	9.00am – 10.00am	9.00am – 10.00am	9.00am – 10.00am	9.00am – 10.00am		
Winter Bookings	Mon	Tue	Wed	Thu	Fri	Sat	Sun
Westside Football (J)			6.30pm – 8.30pm				8.30am – 2.30pm
Summer Bookings	Mon	Tue	Wed	Thu	Fri	Sat	Sun
Joondalup Kinross Junior Cricket	4.00pm – 7.00pm	4.00pm – 7.00pm	4.00pm – 7.00pm	4.00pm – 7.00pm	4.00pm – 7.00pm	8.00am – 12.00pm	8.00am – 12.00pm
Joondalup Kinross Senior Cricket						12.00pm – 6.00pm	

Clubroom Bookings

Annual Bookings	Mon	Tue	Wed	Thu	Fri	Sat	Sun
First Kinross Scout Group	7.00pm – 9.00pm	6.30pm – 8.00pm					
Kinross Playgroup (Inc).	9.00am – 2.00pm	9.00am – 2.00pm	9.00am – 2.00pm	9.00am – 2.00pm	9.00am – 2.00pm		
Joondalup Gum Tree Girl Guides		4.30pm – 6.00pm					
Winter Bookings	Mon	Tue	Wed	Thu	Fri	Sat	Sun
Westside Football Club (F) (J)							8.30am – 2.30pm
Summer Bookings	Mon	Tue	Wed	Thu	Fri	Sat	Sun

37 & 38 - MARRI PARK, DUNCRAIG



Size	58759m ²
Current Classification	District Park
Proposed Classification	Local Sports Park
Primary Use	Soccer - Cricket
Club Home Base	---
Number of Playing Surfaces	1 Soccer (Jnr) - 1 Cricket
Buildings	
Function/Meeting Space	No
Toilets	Yes – Public Toilet
Players Changeroom	No
Umpire Changeroom	No
Canteen/Kiosk	No
Kitchen	No
Storage	No
First Aid Room	No
Infrastructure	
Floodlighting	1
Play Equipment	Yes
Other	---

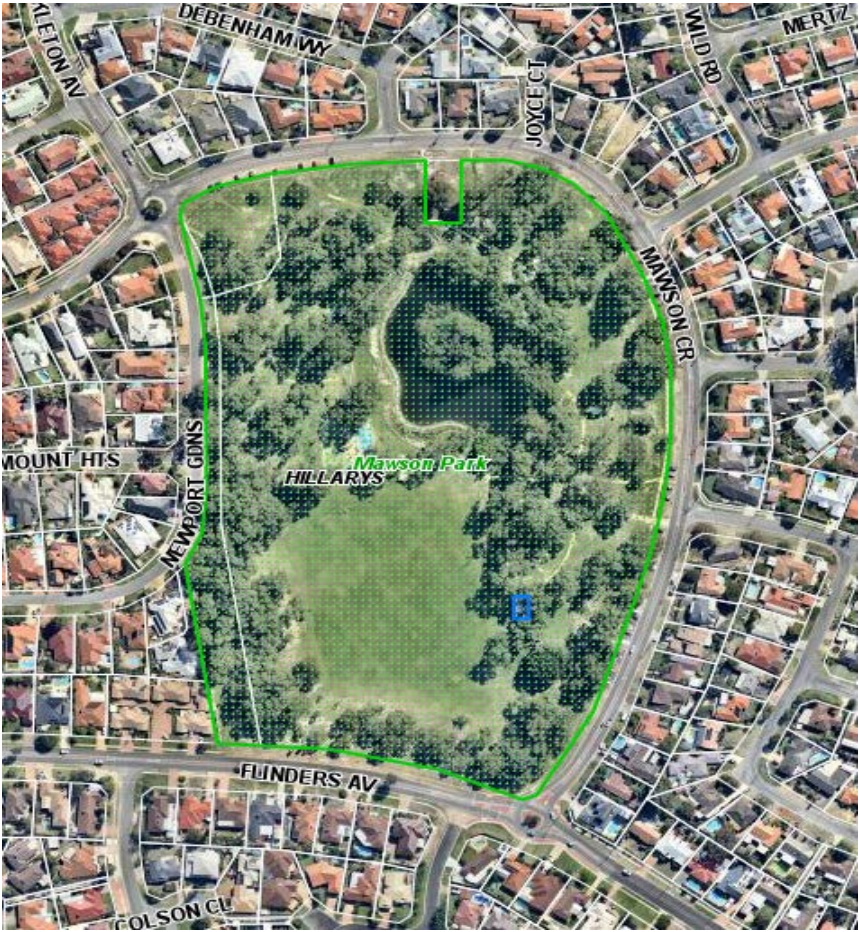
Park Bookings

Annual Bookings	Mon	Tue	Wed	Thu	Fri	Sat	Sun
Lunge Into Fitness	6.00am – 7.00am 9.15am – 10.15am 6.15pm – 7.15pm	6.00am – 7.00am 9.15am – 10.15am 6.15pm – 7.15pm	6.00am – 7.00am 9.15am – 10.15am 6.15pm – 7.15pm	6.00am – 7.00am 9.15am – 10.15am 6.15pm – 7.15pm	6.00am – 7.00am 9.15am – 10.15am 6.15pm – 7.15pm	8.15am – 9.15am	
Winter Bookings	Mon	Tue	Wed	Thu	Fri	Sat	Sun
Lower – Sorrento Football Club (J)	5.00pm – 8.00pm	5.00pm – 6.30pm	5.00pm – 8.30pm	5.00pm – 6.30pm	5.00pm – 8.00pm		8.30am – 12pm
Lower – Sorrento Football Club (S)		6.30pm – 8.30pm		6.30pm – 8.30pm			
Upper – Sorrento Football Club (J)		5.00pm – 8.30pm	5.00pm – 8.30pm	5.00pm – 8.30pm	5.00pm – 7.00pm		8.30pm – 1.00pm
Summer Bookings	Mon	Tue	Wed	Thu	Fri	Sat	Sun
Lower – Sorrento Football Club Inc (J)		5.00pm – 8.00pm		5.00pm – 8.00pm			
Lower – Sorrento Football Club Inc (S)		6.30pm – 8.30pm	6.30pm – 8.00pm	6.30pm – 8.30pm			
Upper – Sorrento Duncraig Junior Cricket		4.00pm – 7.00pm	4.00pm – 7.00pm	4.00pm – 7.00pm	4.00pm – 7.00pm	8.00am – 12.00pm	8.00am – 12.00pm

Clubroom Bookings

Annual Bookings	Mon	Tue	Wed	Thu	Fri	Sat	Sun
Winter Bookings	Mon	Tue	Wed	Thu	Fri	Sat	Sun
Summer Bookings	Mon	Tue	Wed	Thu	Fri	Sat	Sun

39 - MAWSON PARK, HILLARYS



Size	92477m ²
Current Classification	Local Park
Proposed Classification	Local Mixed-Use Park
Primary Use	AFL - Softball
Club Home Base	Pirates Softball Club WA
Number of Playing Surfaces	1 AFL (Jnr) - 1 Softball
Buildings	
Function/Meeting Space	No
Toilets	Yes – Public Toilet
Players Changeroom	No
Umpire Changeroom	No
Canteen/Kiosk	No
Kitchen	No
Storage	No
First Aid Room	No
Infrastructure	
Floodlighting	2
Play Equipment	Yes
Other	Lake

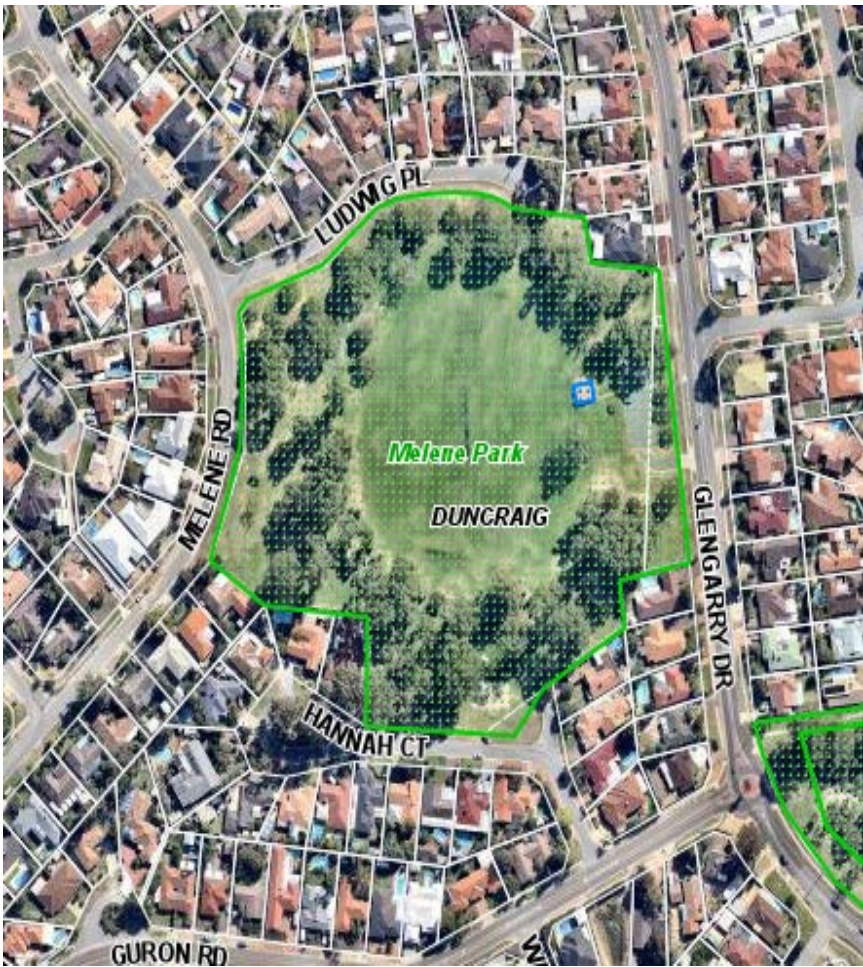
Park Bookings

Annual Bookings	Mon	Tue	Wed	Thu	Fri	Sat	Sun
Winter Bookings	Mon	Tue	Wed	Thu	Fri	Sat	Sun
Whitfords Junior Football	4.00pm – 7.00pm	4.00pm – 7.00pm	4.00pm – 7.00pm	4.00pm – 7.00pm	4.00pm – 7.00pm		
Pirates Softball Club WA							12.00pm – 5.30pm
Summer Bookings	Mon	Tue	Wed	Thu	Fri	Sat	Sun

Clubroom Bookings

Annual Bookings	Mon	Tue	Wed	Thu	Fri	Sat	Sun
Winter Bookings	Mon	Tue	Wed	Thu	Fri	Sat	Sun
Summer Bookings	Mon	Tue	Wed	Thu	Fri	Sat	Sun

40 - MELENE PARK, DUNCRAIG



Size	42841m ²
Current Classification	Local Park
Proposed Classification	Local Sports Park
Primary Use	AFL - Cricket
Club Home Base	---
Number of Playing Surfaces	1 Cricket - 1 AFL
Buildings	
Function/Meeting Space	No
Toilets	Yes – Public Toilet
Players Changeroom	No
Umpire Changeroom	No
Canteen/Kiosk	No
Kitchen	No
Storage	No
First Aid Room	No
Infrastructure	
Floodlighting	1
Play Equipment	No
Other	---

Park Bookings

Annual Bookings	Mon	Tue	Wed	Thu	Fri	Sat	Sun
Winter Bookings	Mon	Tue	Wed	Thu	Fri	Sat	Sun
Sorrento Duncraig Junior Football	4.00pm – 7.00pm	4.00pm – 7.00pm	4.00pm – 7.00pm	4.00pm – 7.00pm	4.00pm – 7.00pm		
Summer Bookings	Mon	Tue	Wed	Thu	Fri	Sat	Sun
Sorrento Duncraig Junior Cricket	4.00pm – 7.00pm	4.00pm – 7.00pm	4.00pm – 7.00pm	4.00pm – 7.00pm	4.00pm – 7.00pm	8.00am – 12.00pm	8.00am – 12.00pm
Sorrento Duncraig Cricket (S)						12.30pm – 6.00pm	

Clubroom Bookings

Annual Bookings	Mon	Tue	Wed	Thu	Fri	Sat	Sun
Winter Bookings	Mon	Tue	Wed	Thu	Fri	Sat	Sun
Summer Bookings	Mon	Tue	Wed	Thu	Fri	Sat	Sun

41 - MIRROR PARK, OCEAN REEF



Size	47792m ²
Current Classification	Local Park
Proposed Classification	Local Sports Park
Primary Use	AFL - T-Ball
Club Home Base	---
Number of Playing Surfaces	1 AFL
Buildings	
Function/Meeting Space	No
Toilets	Yes – Public Toilet
Players Changeroom	No
Umpire Changeroom	No
Canteen/Kiosk	No
Kitchen	No
Storage	No
First Aid Room	No
Infrastructure	
Floodlighting	1
Play Equipment	Yes
Other	BMX Track

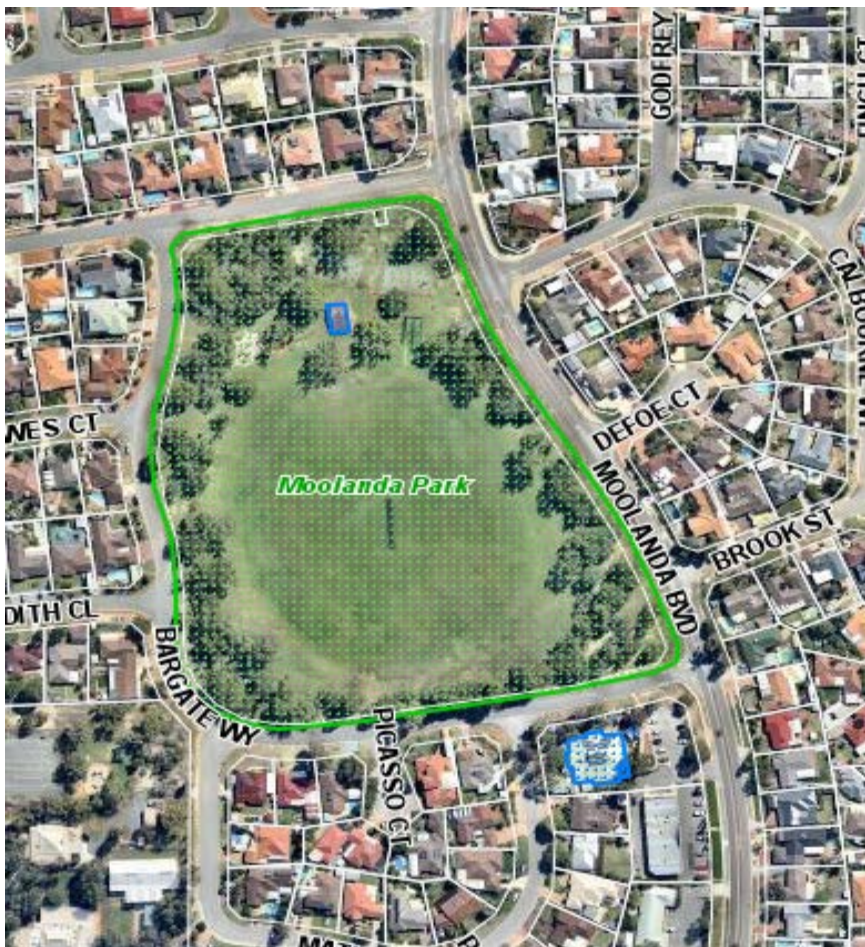
Park Bookings

Annual Bookings	Mon	Tue	Wed	Thu	Fri	Sat	Sun
Gunny's PT	6.00am – 7.00am 9.00am – 11.00am 5.00pm – 7.00pm	6.00am – 7.00am 9.00am – 11.00am 5.00pm – 7.00pm	6.00am – 7.00am 9.00am – 11.00am 5.00pm – 7.00pm	6.00am – 7.00am 9.00am – 11.00am 5.00pm – 7.00pm	6.00am – 7.00am 9.00am – 11.00am 5.00pm – 7.00pm	7.00am – 9.00am	
Winter Bookings	Mon	Tue	Wed	Thu	Fri	Sat	Sun
Ocean Ridge Junior Football		4.00pm – 6.00pm	4.30pm – 6.00pm	4.00pm – 6.00pm	4.30pm – 6.00pm		
Summer Bookings	Mon	Tue	Wed	Thu	Fri	Sat	Sun
Wanneroo Joondalup T/Ball	4.00pm – 6.30pm	4.00pm – 6.30pm	4.00pm – 6.30pm	4.00pm – 6.30pm			

Clubroom Bookings

Annual Bookings	Mon	Tue	Wed	Thu	Fri	Sat	Sun
Winter Bookings	Mon	Tue	Wed	Thu	Fri	Sat	Sun
Summer Bookings	Mon	Tue	Wed	Thu	Fri	Sat	Sun

42 – MOOLANDA PARK, KINGSLEY



Size	42644m ²
Current Classification	Neighbourhood Park
Proposed Classification	Local Sports Park
Primary Use	AFL - Cricket - T-Ball
Club Home Base	---
Number of Playing Surfaces	1 Cricket - 1 AFL
Buildings	
Function/Meeting Space	No
Toilets	Yes – Public Toilet
Players Changeroom	No
Umpire Changeroom	No
Canteen/Kiosk	No
Kitchen	No
Storage	No
First Aid Room	No
Infrastructure	
Floodlighting	2
Play Equipment	Yes
Other	---

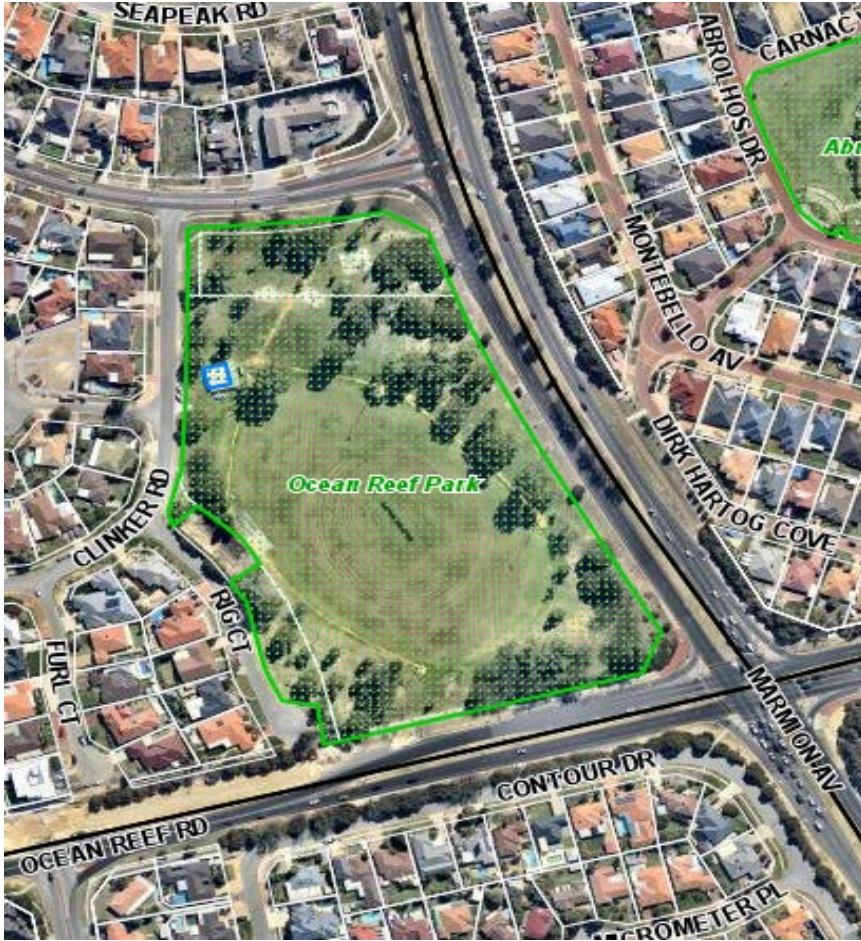
Park Bookings

Annual Bookings	Mon	Tue	Wed	Thu	Fri	Sat	Sun
Winter Bookings	Mon	Tue	Wed	Thu	Fri	Sat	Sun
Kingsley Junior Football	4.00pm – 6.00pm	4.00pm – 6.00pm	4.00pm – 6.00pm	4.00pm – 6.00pm	4.00pm – 6.00pm		8.00am – 5.00pm
North Coast Triathlon				6.00pm – 7.00pm			
Summer Bookings	Mon	Tue	Wed	Thu	Fri	Sat	Sun
Wanneroo Joondalup T/Ball		4.00pm – 6.00pm			4.00pm – 6.00pm		
Kingsley Woodvale Junior Cricket	4.30pm - 6.30pm	4.30pm - 6.30pm	4.30pm - 6.30pm	4.30pm - 6.30pm	4.30pm - 6.30pm	8.00am – 12.00pm	8.00am – 12.00pm
Kingsley Woodvale Cricket (S)						12.00pm – 6.00pm	

Clubroom Bookings

Annual Bookings	Mon	Tue	Wed	Thu	Fri	Sat	Sun
Winter Bookings	Mon	Tue	Wed	Thu	Fri	Sat	Sun
Summer Bookings	Mon	Tue	Wed	Thu	Fri	Sat	Sun

43 – OCEAN REEF PARK, OCEAN REEF



Size	43010m ²
Current Classification	Local Park
Proposed Classification	Local Sports Park
Primary Use	AFL - Cricket
Club Home Base	---
Number of Playing Surfaces	1 Cricket - 1 AFL
Buildings	
Function/Meeting Space	No
Toilets	Yes – Public Toilets
Players Changeroom	Yes
Umpire Changeroom	No
Canteen/Kiosk	Yes
Kitchen	No
Storage	Yes
First Aid Room	No
Infrastructure	
Floodlighting	4 - Training + Competition installed May 2016
Play Equipment	Yes
Other	---

Park Bookings

Annual Bookings	Mon	Tue	Wed	Thu	Fri	Sat	Sun
Winter Bookings	Mon	Tue	Wed	Thu	Fri	Sat	Sun
Ocean Ridge Junior Football	5.00pm – 6.15pm	4.30pm – 6.45pm	4.30pm – 6.45pm	4.30pm – 6.45pm	4.30pm – 6.45pm	8.00am – 2.00pm	8.00am – 11.00am
Summer Bookings	Mon	Tue	Wed	Thu	Fri	Sat	Sun
Ocean Ridge Junior Cricket	4.30pm – 6.30pm	4.30pm – 6.30pm	4.30pm – 6.30pm	4.30pm – 6.30pm	4.30pm – 6.30pm	8.00am – 12.00pm	8.00am – 12.00pm

Clubroom Bookings

Annual Bookings	Mon	Tue	Wed	Thu	Fri	Sat	Sun
Winter Bookings	Mon	Tue	Wed	Thu	Fri	Sat	Sun
Summer Bookings	Mon	Tue	Wed	Thu	Fri	Sat	Sun

44 - Otago PARK, CRAIGIE



Size	32049m ²
Current Classification	Local Park
Proposed Classification	Local Sports Park
Primary Use	AFL - Cricket
Club Home Base	---
Number of Playing Surfaces	1 AFL - 1 Cricket
Buildings	
Function/Meeting Space	No
Toilets	Yes – Public Toilet
Players Changeroom	No
Umpire Changeroom	No
Canteen/Kiosk	No
Kitchen	No
Storage	No
First Aid Room	No
Infrastructure	
Floodlighting	1
Play Equipment	Yes
Other	---

Park Bookings

Annual Bookings	Mon	Tue	Wed	Thu	Fri	Sat	Sun
German Shepherd Dog Assoc.							8.30am – 11.30am
Get Fitness	6.00am – 11.00am 4.00pm – 8.30pm	6.00am – 11.00am 4.00pm – 8.30pm	6.00am – 11.00am 4.00pm – 8.30pm	6.00am – 11.00am 4.00pm – 8.30pm	6.00am – 11.00am 4.00pm – 8.30pm	6.00am – 11.00am	
Winter Bookings	Mon	Tue	Wed	Thu	Fri	Sat	Sun
Whitford Junior Football	4.00pm – 7.00pm	4.00pm – 7.00pm	4.00pm – 7.00pm	4.00pm – 7.00pm	4.00pm – 7.00pm		8.00am – 6.00pm
Summer Bookings	Mon	Tue	Wed	Thu	Fri	Sat	Sun
Whitford Junior Cricket	4.00pm – 6.30pm	4.00pm – 6.30pm	4.00pm – 6.30pm	4.00pm – 6.30pm	4.00pm – 6.30pm	8.00am – 12.00pm	8.00am – 12.00pm
Edgewater Senior Cricket						12.30pm – 6.00pm	

Clubroom Bookings

Annual Bookings	Mon	Tue	Wed	Thu	Fri	Sat	Sun
Winter Bookings	Mon	Tue	Wed	Thu	Fri	Sat	Sun
Summer Bookings	Mon	Tue	Wed	Thu	Fri	Sat	Sun

45 - PARKSIDE PARK, WOODVALE



Size	27614m ²
Current Classification	Neighbourhood Park
Proposed Classification	Local Sports Park
Primary Use	Soccer - T-Ball
Club Home Base	---
Number of Playing Surfaces	1
Buildings	
Function/Meeting Space	No
Toilets	No
Players Changeroom	No
Umpire Changeroom	No
Canteen/Kiosk	No
Kitchen	No
Storage	No
First Aid Room	No
Infrastructure	
Floodlighting	1
Play Equipment	Yes
Other	Shared with St Lukes Catholic Primary School

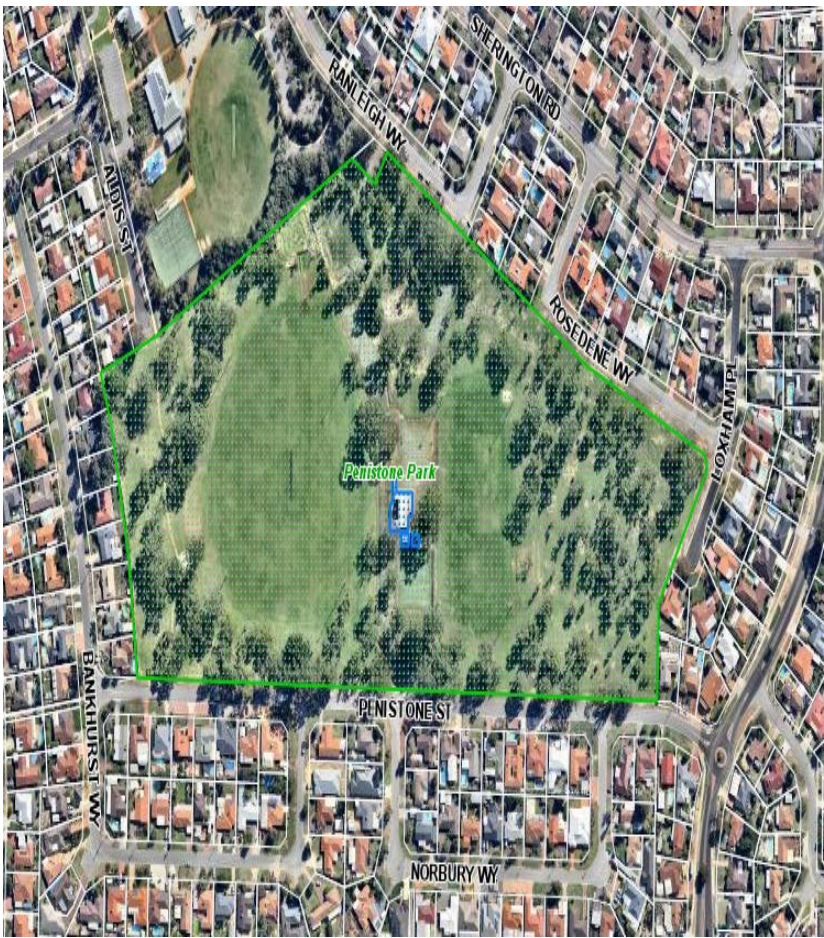
Park Bookings

Annual Bookings	Mon	Tue	Wed	Thu	Fri	Sat	Sun
St Lukes Catholic Primary School	8.00am – 4.00pm	8.00am – 4.00pm	8.00am – 4.00pm	8.00am – 4.00pm	8.00am – 4.00pm		
Winter Bookings	Mon	Tue	Wed	Thu	Fri	Sat	Sun
Woodvale FC (J)		4.30pm – 7.30pm	4.30pm – 7.30pm	4.30pm – 7.30pm			
Summer Bookings	Mon	Tue	Wed	Thu	Fri	Sat	Sun
Wanneroo Joondalup T/Ball	4.00pm – 6.30pm	4.00pm – 6.30pm	4.00pm – 6.30pm	4.00pm – 6.30pm	4.00pm – 6.30pm		

Clubroom Bookings

Annual Bookings	Mon	Tue	Wed	Thu	Fri	Sat	Sun
Winter Bookings	Mon	Tue	Wed	Thu	Fri	Sat	Sun
Summer Bookings	Mon	Tue	Wed	Thu	Fri	Sat	Sun

46 & 47 - PENISTONE PARK, GREENWOOD



Size	114396m ²
Current Classification	District Park
Proposed Classification	District Sports Park
Primary Use	Lacrosse - AFL - Softball - Little Athletics
Club Home Base	Wanneroo Lacrosse Warwick Greenwood Football Club Perth Outlaws Greenwood Little Athletics
Number of Playing Surfaces	1 Cricket - Athletics Infrastructure
Buildings	
Function/Meeting Space	Yes
Toilets	Yes – In Clubroom & Public Toilet
Players Changeroom	2
Umpire Changeroom	No
Canteen/Kiosk	No
Kitchen	Yes
Storage	Yes x 5
First Aid Room	No
Infrastructure	
Floodlighting	Upper – 4 x 250Lux (Australian Standard) Lower – 4 x 50Lux (Australian Standard)
Play Equipment	Yes
Other	---

Park Bookings

Annual Bookings	Mon	Tue	Wed	Thu	Fri	Sat	Sun
Winter Bookings	Mon	Tue	Wed	Thu	Fri	Sat	Sun
Upper - Wanneroo Lacrosse (S)		6.30pm – 8.30pm		6.30pm – 8.30pm		3.0pm – 9.00pm	
Upper - Wanneroo Lacrosse (J)		4.30pm – 6.30pm	4.30pm – 5.30pm	4.30pm – 6.30pm		8.00am – 3.00pm	
Upper – Warwick Greenwood Junior Football	4.00pm – 8.00pm						
Lower – Warwick Greenwood Junior Football	4.00pm – 7.30pm	4.00pm – 7.30pm		4.00pm – 8.00pm	4.00pm – 7.30pm		
Lower – Wanneroo Lacrosse (S)		7.30pm – 8.30pm				3.00pm – 6.00pm	
Lower – Wanneroo Lacrosse (J)						8.00am – 3.00pm	
Lower – Perth Outlaws Softball (J)			5.00pm – 6.00pm				8.30am – 12.00pm
Lower – Perth Outlaws Softball (S)			6.00pm – 8.30pm				12.00pm – 6.00pm
Summer Bookings	Mon	Tue	Wed	Thu	Fri	Sat	Sun
Upper – Greenwood Little Athletics	5.00pm – 7.00pm		5.00pm – 7.00pm				
Upper – Warwick Greenwood Junior Cricket					4.00pm – 8.00pm		
Lower – Greenwood Little Athletics	5.00pm – 7.00pm		5.00pm – 8.00pm				
Lower – Warwick Greenwood Junior Cricket	4.00pm – 6.00pm	4.00pm – 6.00pm	4.00pm – 6.00pm	4.00pm – 6.00pm	4.00pm – 6.00pm	8.00am – 12.00pm	8.00am – 12.00pm
Lower – Warwick Greenwood Cricket (S)		5.00pm – 6.30pm		5.00pm – 6.30pm		12.30pm – 6.30pm	12.30pm – 6.30pm

Clubroom Bookings

Annual Bookings	Mon	Tue	Wed	Thu	Fri	Sat	Sun
Penistone Playgroup		9.00am – 12.00pm			9.00am – 12.00pm		
Winter Bookings	Mon	Tue	Wed	Thu	Fri	Sat	Sun
Warwick Greenwood Junior	7.00pm – 9.30pm				4.00pm – 8.30pm		
Wanneroo Lacrosse Club (Snrs)		6.30pm – 10.00pm		6.30pm – 10.00pm		12.30pm – 11.00pm	

Perth Outlaw Softball Club (S) (F)			6.00pm – 8.30pm				
Wanneroo Lacrosse (J) (F)						8.00am – 11.00am	
Summer Bookings	Mon	Tue	Wed	Thu	Fri	Sat	Sun
Greenwood Little Athletics	5.00pm – 7.00pm		5.00pm – 8.00pm				
Warwick Greenwood Cricket Club		6.00pm – 8.00pm		6.00pm – 9.00pm	6.00pm – 11.00pm	3.00pm – 10.00pm	

48-51 - PERCY DOYLE RESERVE, DUNCRAIG



Size	213383m ²
Current Classification	Regional Park
Proposed Classification	Regional Sports Park
Primary Use	AFL - Cricket - T-Ball
Club Home Base	Wanneroo Joondalup TeeBall Club Greenwood Football Club Hammersley Carine Amateur Football Club
Number of Playing Surfaces	1 AFL - 1 Cricket
Buildings	
Function/Meeting Space	Yes
Toilets	Yes – In Clubroom
Players Changeroom	Yes x 2 with toilets
Umpire Changeroom	No
Canteen/Kiosk	Yes
Kitchen	Yes
Storage	Yes x 4
First Aid Room	No
Infrastructure	
Floodlighting	1 (SW) - 4 x 100Lux (Australian Standard) 2 (SE) - 4 3 (NW) - 2 Oval (NE) – 4 x 50Lux (Australian Standard)
Play Equipment	No
Other	---

Park Bookings

Annual Bookings	Mon	Tue	Wed	Thu	Fri	Sat	Sun
Winter Bookings	Mon	Tue	Wed	Thu	Fri	Sat	Sun
1 (SW) - Sorrento Football Club (S)						1.00pm – 5.00pm	1.00pm – 5.00pm
1 (SW) - Sorrento Football Club (J)						10.00am – 1.00pm	8.30am – 1.00pm
2 (SE) - Sorrento Football Club (J)	5.00pm – 8.00pm	5.00pm – 6.30pm	5.00pm – 8.30pm	5.00pm – 6.30pm	5.00pm – 8.30pm		8.30am – 1.00pm
2 (SE) - Sorrento Football Club (S)		6.30pm – 8.30pm		6.30pm – 8.30pm			1.00pm – 5.00pm
3 (NW) - Sorrento Football Club (J)	5.00pm – 8.30pm	5.00pm – 8.30pm	5.00pm – 8.30pm	5.00pm – 8.30pm	5.00pm – 7.00pm		8.30am – 1.00pm
3 (NW) - Sorrento Football Club (S)							1.00pm – 5.00pm
Oval (NE) – Greenwood Football Club		6.00pm – 7.30pm		6.00pm – 7.30pm			11.30am – 5.00pm
Oval (NE) – Sorrento Duncraig Junior Football Club	4.00pm – 7.00pm	4.00pm – 6.00pm	4.00pm – 7.00pm	4.00pm – 6.00pm	4.00pm – 7.00pm		8.00am – 11.30am
Oval (NE) – Simon Fleming			7.00pm - 9.00pm				
Oval (NE) – Hamersley Carine Amateur Football						10.30am – 6.00pm	
Summer Bookings	Mon	Tue	Wed	Thu	Fri	Sat	Sun
Sorrento Football Club (J)	5.00pm – 8.30pm	5.00pm – 8.30pm	5.00pm – 8.30pm	5.00pm – 8.30pm	5.00pm – 8.30pm		
2, 3 & FT - Wanneroo Joondalup T/Ball	4.00pm – 6.30pm	4.00pm – 6.30pm	4.00pm – 6.30pm	4.00pm – 7.00pm	4.00pm – 6.30pm	8.00 – 12.45pm	
Northern Knights						12.30pm – 5.30pm	
Simon Fleming			7.00pm – 9.00pm				

Clubroom Bookings

Annual Bookings	Mon	Tue	Wed	Thu	Fri	Sat	Sun
Winter Bookings	Mon	Tue	Wed	Thu	Fri	Sat	Sun
Wanneroo Joondalup T/Ball		7.00pm – 10.00pm (1 per month)					
Greenwood Football Club Inc (S)				6.30pm – 10.00pm	6.00pm – 11.00pm		
Hamersley-Carine Amateur						12.00pm – 10.00pm	
Sorrento Duncraig Junior Football							8.00am – 11.00am
Summer Bookings	Mon	Tue	Wed	Thu	Fri	Sat	Sun
Sorrento Duncraig Junior Football			7.00pm – 10.00pm (4 x monthly)				
Wanneroo Joondalup T/Ball						8.00am – 1.00pm	

52 – PRINCE REGENT PARK, HEATHRIDGE



Size	48906m ²
Current Classification	Local Park
Proposed Classification	Local Sports Park
Primary Use	Soccer - Cricket
Club Home Base	JUFC (Jnrs)
Number of Playing Surfaces	2 Soccer - 1 Cricket
Buildings	
Function/Meeting Space	No
Toilets	Yes
Players Changeroom	No
Umpire Changeroom	No
Canteen/Kiosk	No
Kitchen	No
Storage	No
First Aid Room	No
Infrastructure	
Floodlighting	6 x 50 Lux (Australian Standard)
Play Equipment	Yes
Other	---

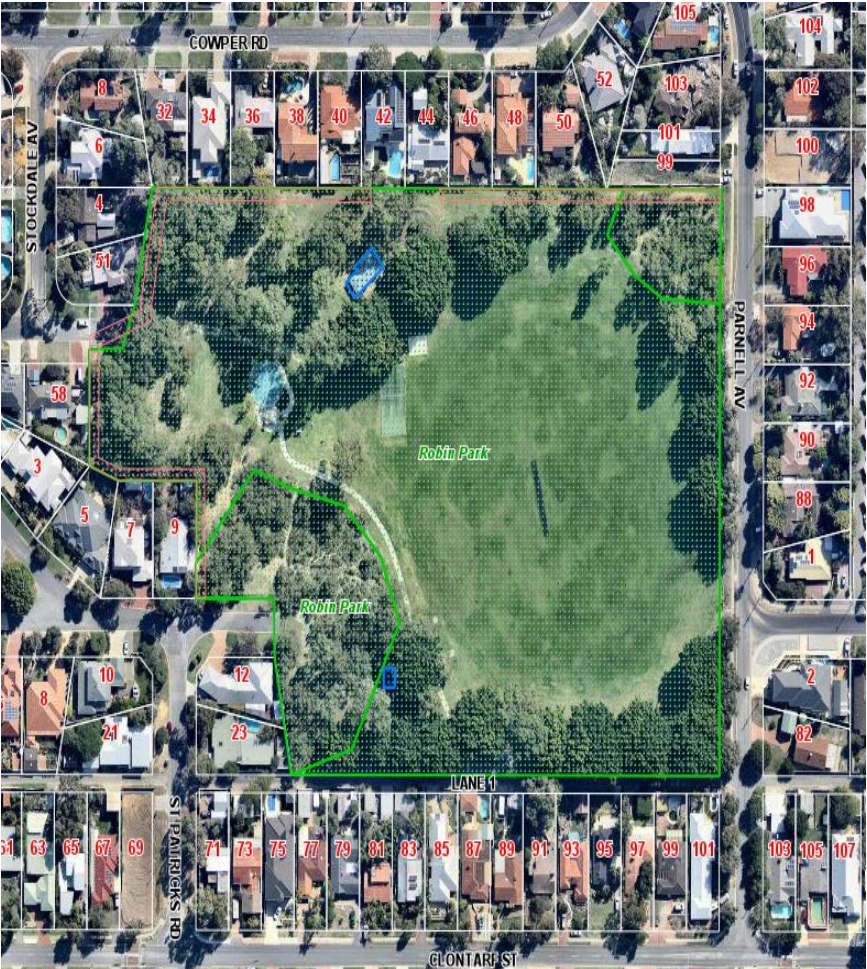
Park Bookings

Annual Bookings	Mon	Tue	Wed	Thu	Fri	Sat	Sun
Bee On Top	6.00am – 12.00pm 3.00pm – 8.00pm	6.00am – 12.00pm 3.00pm – 8.00pm	6.00am – 12.00pm 3.00pm – 8.00pm	6.00am – 12.00pm 3.00pm – 8.00pm	6.00am – 12.00pm 3.00pm – 8.00pm	8.30am – 11.30am	
Winter Bookings	Mon	Tue	Wed	Thu	Fri	Sat	Sun
Joondalup United Football Club (J)	5.00pm – 7.30pm	5.00pm – 7.30pm	5.00pm – 7.30pm	5.00pm – 7.30pm	5.00pm – 7.30pm		8.00am – 12.30pm
Joondalup United Football Club (S)		7.30pm – 8.30pm		7.30pm – 8.30pm			
Summer Bookings	Mon	Tue	Wed	Thu	Fri	Sat	Sun
Ocean Ridge Junior Cricket	4.30pm – 6.30pm	4.30pm – 6.30pm	4.30pm – 6.30pm	4.30pm – 6.30pm	4.30pm – 6.30pm	8.00am – 12.00pm	8.00am – 12.00pm
Ocean Ridge Senior Cricket						12.30pm – 6.00pm	
Pirates Softball Club of WA Inc.				6.30pm – 8.30pm			

Clubroom Bookings

Annual Bookings	Mon	Tue	Wed	Thu	Fri	Sat	Sun
Winter Bookings	Mon	Tue	Wed	Thu	Fri	Sat	Sun
Summer Bookings	Mon	Tue	Wed	Thu	Fri	Sat	Sun

53 – ROBIN PARK, SORRENTO



Size	50010m ²
Current Classification	Local Park
Proposed Classification	Local Sports Park
Primary Use	Cricket - AFL - Little Athletics
Club Home Base	Sorrento & Districts Little Athletic's
Number of Playing Surfaces	1 Cricket - 1 AFL - Athletics Infrastructure
Buildings	
Function/Meeting Space	No
Toilets	No
Players Changeroom	No
Umpire Changeroom	No
Canteen/Kiosk	No
Kitchen	No
Storage	No
First Aid Room	No
Infrastructure	
Floodlighting	2
Play Equipment	Yes
Other	---

Park Bookings

Annual Bookings	Mon	Tue	Wed	Thu	Fri	Sat	Sun
Winter Bookings	Mon	Tue	Wed	Thu	Fri	Sat	Sun
Sorrento Duncraig Junior Football	4.00pm – 7.00pm	4.00pm – 7.00pm	4.00pm – 7.00pm	4.00pm – 7.00pm	4.00pm – 7.00pm		
Summer Bookings	Mon	Tue	Wed	Thu	Fri	Sat	Sun
Sorrento & Districts Little Athletics	4.30pm – 7.00pm	4.30pm – 7.00pm	4.30pm – 7.00pm	4.30pm – 7.00pm	4.30pm – 7.00pm		
Sorrento Duncraig Junior Cricket	4.00pm – 7.00pm	4.00pm – 7.00pm	4.00pm – 7.00pm	4.00pm – 7.00pm	4.00pm – 7.00pm	8.00am – 12.00pm	8.00am – 12.00pm
Sorrento Duncraig Senior Cricket		5.00pm – 7.00pm		5.00pm – 7.00pm		12.30pm – 6.30pm	

Clubroom Bookings

Annual Bookings	Mon	Tue	Wed	Thu	Fri	Sat	Sun
Winter Bookings	Mon	Tue	Wed	Thu	Fri	Sat	Sun
Summer Bookings	Mon	Tue	Wed	Thu	Fri	Sat	Sun

54 – SANTIAGO PARK, OCEAN REEF

X



Size	60784m ²
Current Classification	Local Park
Proposed Classification	Local Sports Park
Primary Use	Soccer - Cricket
Club Home Base	---
Number of Playing Surfaces	2 Soccer - 1 Cricket - Athletics Infrastructure
Buildings	
Function/Meeting Space	No
Toilets	Yes
Players Changeroom	No
Umpire Changeroom	No
Canteen/Kiosk	No
Kitchen	No
Storage	No
First Aid Room	No
Infrastructure	
Floodlighting	Yes x 4
Play Equipment	Yes
Other	Shared with Beaumaris and St Simon Peter Primary School

Park Bookings

Annual Bookings	Mon	Tue	Wed	Thu	Fri	Sat	Sun
Beaumaris Primary School	8.00am – 4.00pm	8.00am – 4.00pm	8.00am – 4.00pm	8.00am – 4.00pm	8.00am – 4.00pm		
St Simon Peter Primary School	8.00am – 4.00pm	8.00am – 4.00pm	8.00am – 4.00pm	8.00am – 4.00pm	8.00am – 4.00pm		
Up and Running Fitness	6.30 – 12.00pm 4.30pm – 7.30pm	6.30 – 12.00pm 4.30pm – 7.30pm	6.30 – 12.00pm 4.30pm – 7.30pm	6.30 – 12.00pm 4.30pm – 7.30pm	6.30 – 12.00pm 4.30pm – 7.30pm	6.30 – 12.00pm	
Winter Bookings	Mon	Tue	Wed	Thu	Fri	Sat	Sun
Joondalup City Football Club (J)	4.00pm – 8.15pm	4.00pm – 8.15pm	4.00pm – 8.15pm	4.00pm – 8.15pm	4.00pm – 8.15pm		8.00am – 5.00pm
Summer Bookings	Mon	Tue	Wed	Thu	Fri	Sat	Sun
Joondalup Kinross Junior Cricket	4.00pm – 6.30pm	4.00pm – 6.30pm	4.00pm – 6.30pm	4.00pm – 6.30pm	4.00pm – 6.30pm	8.00am – 12.00pm	8.00am – 12.00pm
Joondalup Kinross Senior Cricket						12.00pm – 6.30pm	

Clubroom Bookings

Annual Bookings	Mon	Tue	Wed	Thu	Fri	Sat	Sun
Winter Bookings	Mon	Tue	Wed	Thu	Fri	Sat	Sun
Summer Bookings	Mon	Tue	Wed	Thu	Fri	Sat	Sun

55 & 56 - SEACREST PARK, SORRENTO



Size	91170m ²
Current Classification	District Park
Proposed Classification	District Sports Park
Primary Use	AFL - Cricket
Club Home Base	Sorrento Duncraig Junior Cricket Club Sorrento Duncraig Junior Football Club
Number of Playing Surfaces	2 Cricket - 2 AFL
Buildings	
Function/Meeting Space	Yes
Toilets	Yes – In Clubroom
Players Changeroom	Yes x 2 with toilet
Umpire Changeroom	Yes
Canteen/Kiosk	Yes
Kitchen	Yes
Storage	Yes x 5
First Aid Room	No
Infrastructure	
Floodlighting	East - 4 x 50lux (Australian Standard) West - 4 x 100lux (Australian Standard)
Play Equipment	Yes
Other	---

Park Bookings

Annual Bookings	Mon	Tue	Wed	Thu	Fri	Sat	Sun
Winter Bookings	Mon	Tue	Wed	Thu	Fri	Sat	Sun
East – Sorrento Duncraig Junior Football	4.00pm – 7.30pm	4.00pm – 9.00pm	4.00pm – 7.30pm	4.00pm – 7.30pm	4.00pm – 7.30pm	8.00am – 1.00pm	8.00am – 5.30pm
West – Sorrento Duncraig Junior Football	4.00pm – 7.30pm	4.00pm – 9.00pm	4.00pm – 7.30pm	4.00pm – 7.30pm	4.00pm – 7.30pm	8.00am – 1.00pm	8.00am – 5.30pm
Summer Bookings	Mon	Tue	Wed	Thu	Fri	Sat	Sun
East – Sorrento Duncraig Junior Cricket	4.00pm – 7.00pm		4.00pm – 7.00pm		4.00pm – 7.00pm	8.00am – 12.00pm	8.00am – 12.00pm
East – Sorrento Duncraig Senior Cricket		5.00pm – 7.00pm		5.00pm – 7.00pm		12.30pm – 6.00pm	
West – Sorrento Duncraig Junior Cricket			4.30pm – 7.00pm			8.00am – 12.00pm	8.00am – 12.00pm
West – Sorrento Duncraig Senior Cricket						12.30pm – 6.00pm	

Clubroom Bookings

Annual Bookings	Mon	Tue	Wed	Thu	Fri	Sat	Sun
Nicole Weir Physiotherapy	10.15am - 11.15am			9.30am – 10.30am	9.30am – 10.30am		
Northern Districts Bridge Club	11.30am – 4.00pm			12.00pm – 4.00pm			
Yoga Bliss		9.15am – 10.45am	9.15am – 10.45am				
Winter Bookings	Mon	Tue	Wed	Thu	Fri	Sat	Sun
Sorrento Duncraig Junior Football						8.00am – 1.00pm	8.00am – 5.30pm
Summer Bookings	Mon	Tue	Wed	Thu	Fri	Sat	Sun
Sorrento Duncraig Junior Cricket			7.00pm – 9.00pm				
Sorrento Duncraig Senior Cricket				6.30pm – 10.00pm		1.30pm – 10.30pm	

57 – TIMBERLANE PARK, WOODVALE



Size	76299m ²
Current Classification	Local Park
Proposed Classification	Local Sports Park
Primary Use	Soccer - T-Ball
Club Home Base	Woodvale FC
Number of Playing Surfaces	1 Soccer
Buildings	
Function/Meeting Space	Yes
Toilets	Yes – In Clubroom & Public Toilet
Players Changeroom	Yes x 4 with toilet
Umpire Changeroom	Yes with toilet
Canteen/Kiosk	No
Kitchen	Yes
Storage	Yes x 4
First Aid Room	No
Infrastructure	
Floodlighting	2
Play Equipment	No
Other	Tennis Courts x 12

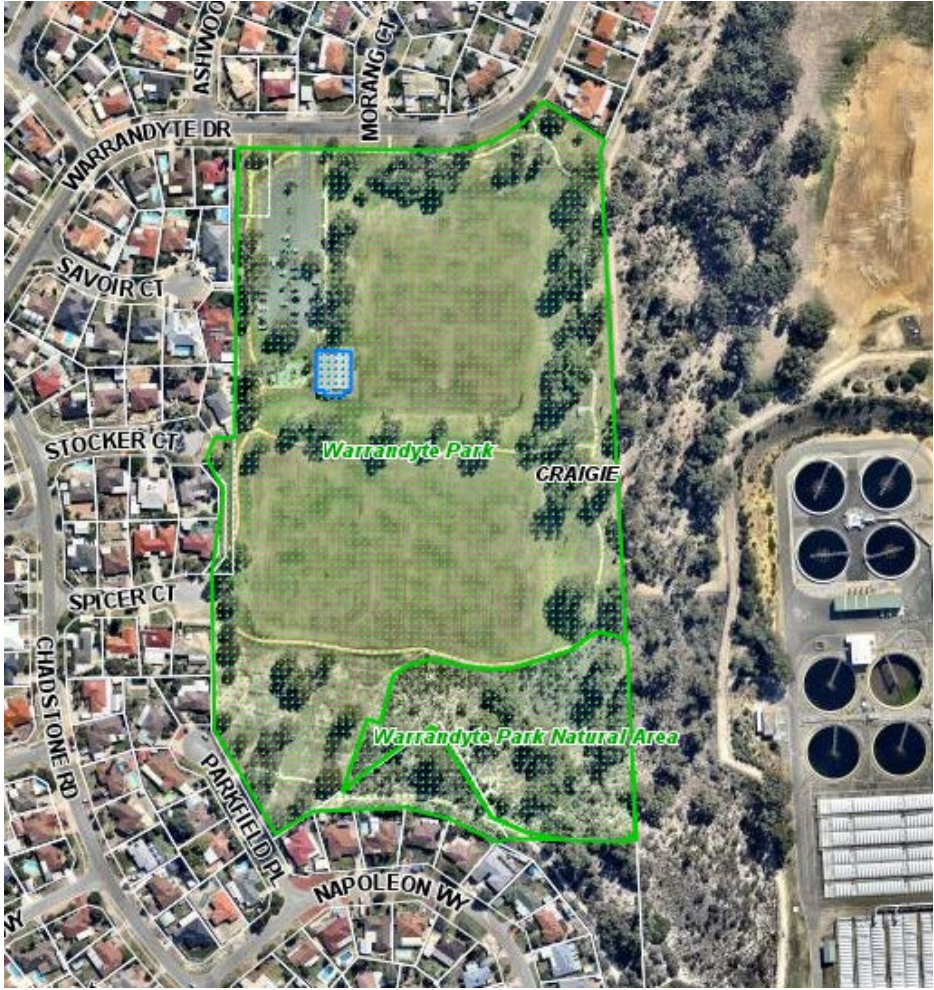
Park Bookings

Annual Bookings	Mon	Tue	Wed	Thu	Fri	Sat	Sun
Winter Bookings	Mon	Tue	Wed	Thu	Fri	Sat	Sun
Woodvale FC (J)	4.30pm – 7.30pm	4.30pm – 7.30pm	4.30pm – 7.30pm	4.30pm – 7.30pm	4.30pm – 7.30pm	8.00am – 12.00pm	8.00am – 4.30pm
Woodvale FC (S)		6.00pm – 9.00pm	6.30pm – 9.00pm	6.00pm – 9.00pm			12.00pm – 5.00pm
Summer Bookings	Mon	Tue	Wed	Thu	Fri	Sat	Sun
Wanneroo Joondalup T/Ball	4.00pm – 6.30pm	4.00pm – 6.30pm	4.00pm – 6.30pm	4.00pm – 6.30pm	4.00pm – 6.30pm		

Clubroom Bookings

Annual Bookings	Mon	Tue	Wed	Thu	Fri	Sat	Sun
Winter Bookings	Mon	Tue	Wed	Thu	Fri	Sat	Sun
Summer Bookings	Mon	Tue	Wed	Thu	Fri	Sat	Sun
Playgroup - Woodvale Family Playgroup	9.30am – 1.30pm	9.30am – 1.30pm	9.30am – 1.30pm	9.30am – 1.30pm	9.30am – 1.30pm		
Playgroup - Northern Lights Toastmasters		6.30pm – 9.30pm					
Tennis – Kingsley Tennis Club (S)	7.00pm – 11.00pm	8.00am – 12.00pm 7.00pm – 11.00pm	9.00am – 2.00pm 7.00pm – 11.00pm	7.00pm – 11.00pm	7.00pm – 11.00pm	1.00pm – 6.30pm	1.00pm – 6.00pm
Tennis – Kingsley Tennis Club (J)					3.00pm – 5.00pm	8.00am – 12.00pm	8.00am – 12.00pm

58 & 59 - WARRANDYTE PARK, CRAIGIE



Size	72288m ²
Current Classification	District Park
Proposed Classification	Local Sports Park
Primary Use	Soccer
Club Home Base	Whitford City FC - Perth City Soccer
Number of Playing Surfaces	2 Soccer
Buildings	
Function/Meeting Space	Yes
Toilets	Yes - In Clubroom
Players Changeroom	Yes x 2
Umpire Changeroom	Yes
Canteen / Kiosk	Yes
Kitchen	Yes
Storage	3 x storerooms
First Aid Room	No
Infrastructure	
Floodlighting	Upper - 3 Lower - 3
Play Equipment	Yes
Other	---

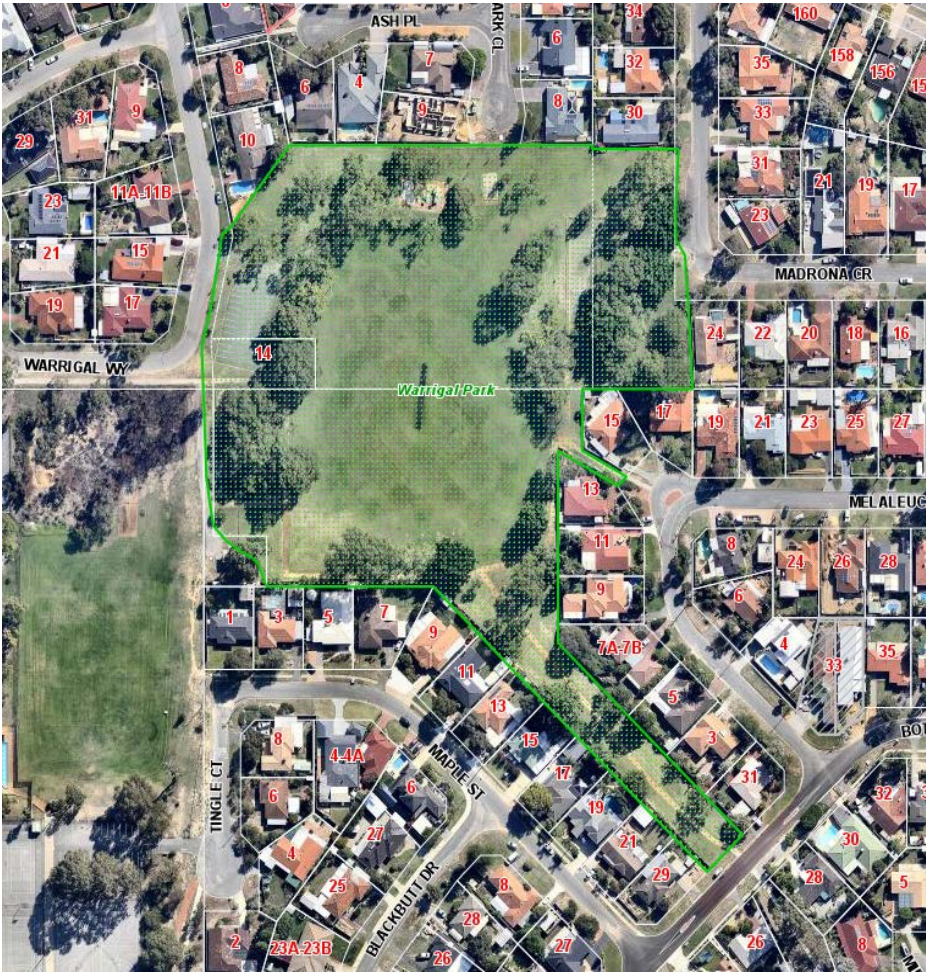
Park Bookings

Annual Bookings	Mon	Tue	Wed	Thu	Fri	Sat	Sun
Winter Bookings	Mon	Tue	Wed	Thu	Fri	Sat	Sun
Lower – Whitford City Football Club (J)	4.30pm-7.00pm	4.30pm – 6.30pm	4.30pm-7.00pm	4.30pm-7.00pm	4.30pm-7.00pm		
Lower – Whitford City Football Club (S)		6.30pm – 8.30pm					12.30pm – 5.00pm
Lower – Perth City Soccer (S)				7.00pm – 9.00pm			
Upper - Whitford City Football Club (J)	4.30pm – 7.00pm	4.30pm – 7.00pm	4.30pm – 7.00pm	4.30pm – 7.00pm	4.30pm – 7.00pm	9.30am – 12.00pm	8.30am – 12.30pm
Upper - Whitford City Football Club (S)				7.00pm – 8.30pm	7.00pm – 8.30pm		
Upper - Perth City Soccer (S)							1.00pm – 5.00pm (fort)
Summer Bookings	Mon	Tue	Wed	Thu	Fri	Sat	Sun
Perth City Soccer (S)				6.30pm – 9.00pm			

Clubroom Bookings

Annual Bookings	Mon	Tue	Wed	Thu	Fri	Sat	Sun
Warrandyte Playgroup (J)	9.30am – 3.30pm	9.30am – 3.30pm	9.30am – 3.30pm	9.30am – 3.30pm	9.30am – 3.30pm		
Craigie Campfire Guides (J)		5.30pm – 8.00pm					
Winter Bookings	Mon	Tue	Wed	Thu	Fri	Sat	Sun
Whitford City Football Club (J)							8.00am – 12.30pm
Whitford City Football Club (S)							12.30pm – 5.00pm
Summer Bookings	Mon	Tue	Wed	Thu	Fri	Sat	Sun

60 - WARRIGAL PARK, GREENWOOD



Size	32643m ²
Current Classification	Neighbourhood Park
Proposed Classification	Local Sports Park
Primary Use	AFL - Cricket
Club Home Base	---
Number of Playing Surfaces	1 AFL - 1 Cricket
Buildings	
Function/Meeting Space	No
Toilets	No
Players Changeroom	No
Umpire Changeroom	No
Canteen/Kiosk	No
Kitchen	No
Storage	No
First Aid Room	No
Infrastructure	
Floodlighting	2
Play Equipment	Yes
Other	---

Park Bookings

Annual Bookings	Mon	Tue	Wed	Thu	Fri	Sat	Sun
Winter Bookings	Mon	Tue	Wed	Thu	Fri	Sat	Sun
Warwick Greenwood Junior Football		4.00pm – 7.30pm	4.30 – 5.30pm	4.00pm – 7.30pm			
Summer Bookings	Mon	Tue	Wed	Thu	Fri	Sat	Sun
Warwick Greenwood Junior Cricket	4.00pm – 6.00pm	4.00pm – 6.00pm	4.00pm – 6.00pm	4.00pm – 6.00pm	4.00pm – 6.00pm	8.00am – 12.00pm	8.00am – 12.00pm

Clubroom Bookings

Annual Bookings	Mon	Tue	Wed	Thu	Fri	Sat	Sun
Winter Bookings	Mon	Tue	Wed	Thu	Fri	Sat	Sun
Summer Bookings	Mon	Tue	Wed	Thu	Fri	Sat	Sun

61 – WARWICK OPEN SPACE, WARWICK



Size	743155m ²
Current Classification	District Park
Proposed Classification	District Sports Park
Primary Use	Hockey
Club Home Base	Whitfords Hockey
Number of Playing Surfaces	2
Buildings	
Function/Meeting Space	No
Toilets	No
Players Changeroom	No
Umpire Changeroom	No
Canteen/Kiosk	No
Kitchen	No
Storage	No
First Aid Room	No
Infrastructure	
Floodlighting	6
Play Equipment	No
Other	Warwick Leisure Centre Tennis Courts x 6 Lawn Bowls x 4

Park Bookings

Annual Bookings	Mon	Tue	Wed	Thu	Fri	Sat	Sun
Winter Bookings	Mon	Tue	Wed	Thu	Fri	Sat	Sun
Summer Bookings	Mon	Tue	Wed	Thu	Fri	Sat	Sun

Clubroom Bookings

Annual Bookings	Mon	Tue	Wed	Thu	Fri	Sat	Sun
Winter Bookings	Mon	Tue	Wed	Thu	Fri	Sat	Sun
Summer Bookings	Mon	Tue	Wed	Thu	Fri	Sat	Sun

62 – WINDEMERE PARK, JOONDALUP



Size	46443m ²
Current Classification	Local Park
Proposed Classification	Local Sports Park
Primary Use	AFL - Cricket
Club Home Base	Joondalup Kinross Junior Football Club Joondalup Kinross Junior Cricket Club Joondalup Kinross Senior Cricket Club
Number of Playing Surfaces	1 AFL - 1 Cricket
Buildings	
Function/Meeting Space	No
Toilets	Public Toilet
Players Changeroom	No
Umpire Changeroom	No
Canteen/Kiosk	No
Kitchen	No
Storage	No
First Aid Room	No
Infrastructure	
Floodlighting	4 x 50lux (Australian Standard)
Play Equipment	Yes
Other	---

Park Bookings

Annual Bookings	Mon	Tue	Wed	Thu	Fri	Sat	Sun
Winter Bookings	Mon	Tue	Wed	Thu	Fri	Sat	Sun
Joondalup Kinross Junior Football	4.00pm – 8.00pm	4.00pm – 8.00pm	4.00pm – 8.00pm	4.00pm – 6.30pm	4.00pm – 7.00pm	8.00am – 2.00pm	8.00 – 7.00pm
ECU Amateur Football Club						2.00pm – 5.30pm	
Summer Bookings	Mon	Tue	Wed	Thu	Fri	Sat	Sun
Joondalup Kinross Cricket (J)	4.00pm – 6.30pm	4.00pm – 6.30pm	4.00pm – 6.30pm		4.00pm – 8.00pm	8.00am – 12.00pm	8.00am – 12.00pm
Joondalup Kinross Cricket (S)		4.00pm – 6.30pm		4.00pm – 6.30pm		12.00pm – 6.30pm	

Clubroom Bookings

Annual Bookings	Mon	Tue	Wed	Thu	Fri	Sat	Sun
Winter Bookings	Mon	Tue	Wed	Thu	Fri	Sat	Sun
Summer Bookings	Mon	Tue	Wed	Thu	Fri	Sat	Sun

63 – ELCAR PARK, JOONDALUP



Size	17889m ²
Current Classification	Neighbourhood Open Space
Proposed Classification	Local Recreation Park
Primary Use	Open Space
Club Home Base	----
Number of Playing Surfaces	----
Buildings	
Function/Meeting Space	No
Toilets	No
Players Changeroom	No
Umpire Changeroom	No
Canteen/Kiosk	No
Kitchen	No
Storage	No
First Aid Room	No
Infrastructure	
Floodlighting	No
Play Equipment	No
Other	---

Park Bookings

Annual Bookings	Mon	Tue	Wed	Thu	Fri	Sat	Sun
Winter Bookings	Mon	Tue	Wed	Thu	Fri	Sat	Sun
Summer Bookings	Mon	Tue	Wed	Thu	Fri	Sat	Sun

Clubroom Bookings

Annual Bookings	Mon	Tue	Wed	Thu	Fri	Sat	Sun
Winter Bookings	Mon	Tue	Wed	Thu	Fri	Sat	Sun
Summer Bookings	Mon	Tue	Wed	Thu	Fri	Sat	Sun

Facility Requirements														
	Dimensions (min field size 90m x 60m)	Field of Play Fence	Seating Structure (Min 120)	Canteen/Kiosk Facilities	Bar Facilities	Parking (min 4)	Male and Female Spectator Toilets	Home and Away Change Rooms			Match Official Change Room			
								Min 20 people	H&C Showers	Seperate Toilet	Min 20 people	H&C Showers	Seperate Toilet	Lockable
Admiral Park														
Barrisdale Park	*													
Beldon Park														
Belrose Park	*													
Blackall Park	*													
Bramston Park														
Bridgewater Park	*													
Caledonia Park														
Callander Park														
Carlton Park	*													
Charonia Park														
Chichester Park North	*													
Chichester Park South														
Christchurch Park														
Ellersdale Park	*													
Emerald Park	*													
Falkland Park														
Flinders Park														
Forrest Park														
Glengarry Park	*													
Hawker Park	*													
Heathridge Park														
Hillarys Park														
Iluka Ground East														
Iluka Ground West														
James Cook Park North	*													
James Cook Park South	*													
Juniper Park	*													
Kingsley Park South														
Kingsley Park North														
Korella Park														
Lexcen Park														
Littorina Park														
MacDonald Park North														
MacDonald Park South														
MacNaughton Park														
Marri Lower Park														
Marri Upper Park	*													
Mawson Park														
Melene Park	*													
Mirror Park	*													
Moolanda Park	*													
Ocean Reef Park	*													
Otago Park	*													
Parkside Park														
Penistone Park East Upper														
Penistone Park West Lower	*													
Percy Doyle 1 Park														
Percy Doyle 2 Park														
Percy Doyle 3 Park														
Percy Doyle F/T Park														
Prince Regent Park														
Robin Park	*													
Santiago Park														
Seacrest East Park														
Seacrest West Park														
Timberlane Park														
Warrandytle Park Lower														
Warrandyte Park Upper														
Warrigal Park														
Warwick Open Space														
Windermere Park														
HBF Arena West														
HBF Arena East														
Edith Cowan University														
	*	Park has a cricket wicket that restricts size												
		Works are due to be undertaken shortly to meet standard												