



90 Boas Ave, Joondalup WA 6027
 PO Box 21, Joondalup WA 6919
 Ph: 08 9400 4000
 Fax: 08 9300 1383
info@joondalup.wa.gov.au
www.joondalup.wa.gov.au

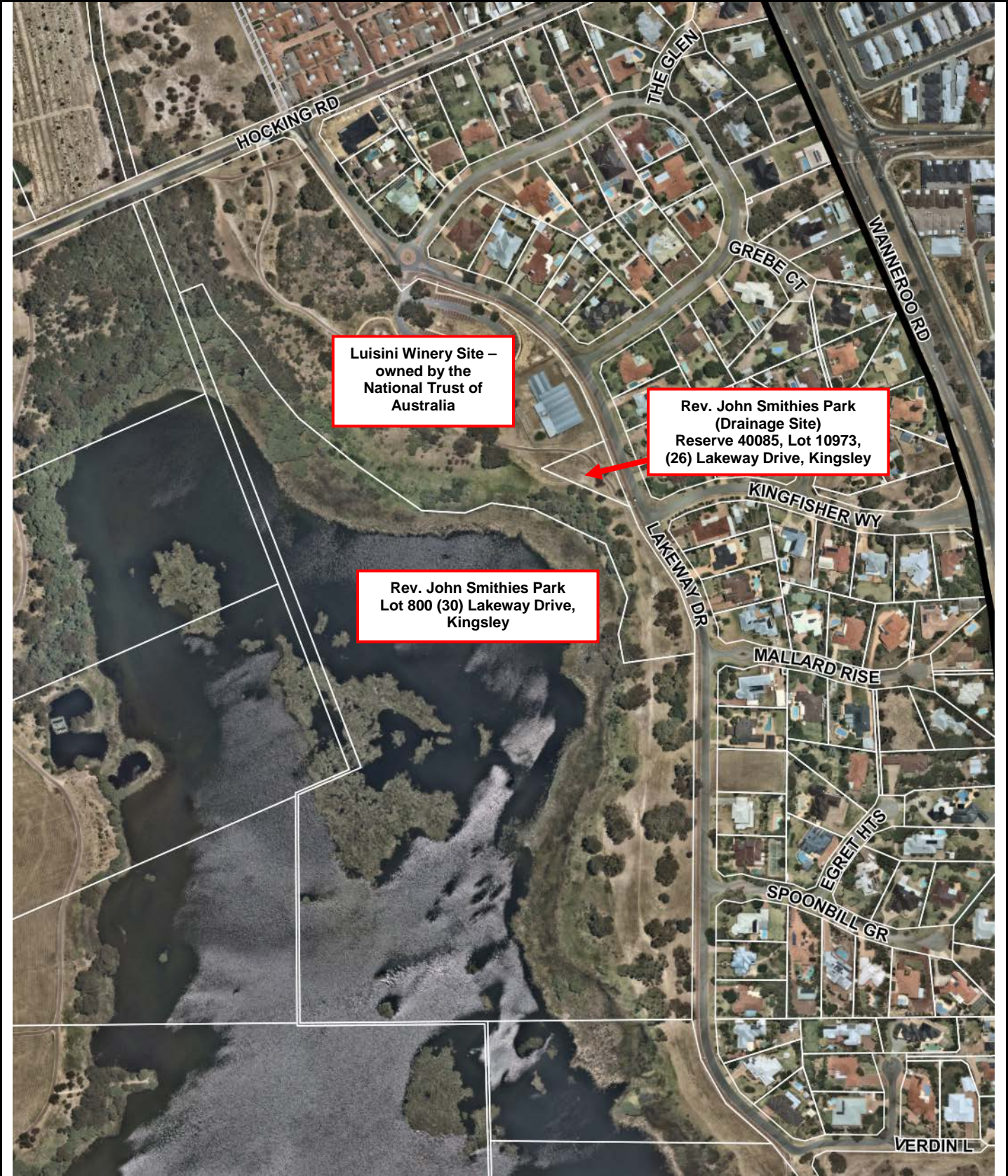




Scale(A4):1:1900

Date: 14/03/2017

DISCLAIMER: While every care is taken to ensure the accuracy of this data, the City of Joondalup makes no representations or warranties about its accuracy, completeness or suitability for any particular purpose and disclaims all liability for all expenses, losses, damages and costs which you might incur as a result of the data being inaccurate or incomplete in any way and for any reason.

**Lot 971 (52) Creaney Drive,
 Kingsley**



 <p>City of Joondalup</p> <p>90 Boas Ave, Joondalup WA 6027 PO Box 21, Joondalup WA 6919 Ph: 08 9400 4000 Fax: 08 9300 1383 info@joondalup.wa.gov.au www.joondalup.wa.gov.au</p>		<p>Scale(A4):1:4514</p> <p>Date: 6/02/2018</p> <p>DISCLAIMER: While every care is taken to ensure the accuracy of this data, the City of Joondalup makes no representations or warranties about its accuracy, completeness or suitability for any particular purpose and disclaims all liability for all expenses, losses, damages and costs which you might incur as a result of the data being inaccurate or incomplete in any way and for any reason.</p>	<p>Rev John Smithies Park – including Reserve 40085, Lot 10973, (26) Lakeway Drive, Kingsley and Luisini Winery</p>
--	---	--	--