

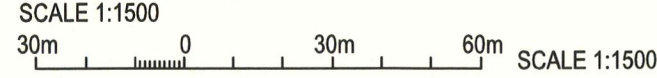
COPYRIGHT © WHEREIS® REGISTERED TRADEMARK OF SENSIS PTY LTD.

LOCALITY PLAN
NOT TO SCALE

SERVICES LEGEND

— E —	— E —	ABOVE GROUND ELECTRICAL SUPPLY
— FE —	— FE —	ABOVE GROUND FEEDER CABLES
- - - E - - -	- - - E - - -	BELOW GROUND ELECTRICAL SUPPLY
- - - FE - - -	- - - FE - - -	BELOW GROUND FEEDER CABLES
- - - T - - -	- - - T - - -	OPTIC FIBRE BELOW GROUND

SITE ACCESS



NOTES:

- 1. ALL FEEDER ACCESS POINTS ON THE STRUCTURE MUST BE BIRD PROOFED AS PER EXTERNAL PLANT POLICY 003615.
- 2. ALL DIMENSIONS ARE IN MILLIMETRES UNLESS SPECIFIED OTHERWISE.
- 3. THIS DRAWING SET IS A PRELIMINARY DRAWING ONLY AND IS ISSUED FOR COMMENT. IT IS NOT A DETAILED SURVEY / STRUCTURAL DRAWING AND THEREFORE COULD BE SUBJECT TO CHANGE.

NOTE: THIS DRAWING TO BE READ IN CONJUNCTION WITH SHEETS S1-1 & S1-2

PRELIMINARY

DO NOT SCALE

F

PROPERTY DESCRIPTION

PART OF LOT 8790 ON
DEPOSITED PLAN 217974
VOLUME/FOLIO: LR3119-901
CITY OF JOONDALUP

SITE STRUCTURE CO-ORDINATES (GDA94)
GPS READING ACCURACY: ± 10m
CENTRE OF POLE

LATITUDE	GDA 94 -31.73093
LONGITUDE	GDA 94 115.71973



servicestream
ESSENTIAL NETWORK SERVICES
Level 3, 7-9 Tanunda Drive, Rivervale WA 6103
T +61 8 9355 7500 | F +61 8 9355 5100 | www.servicestream.com.au

ORDER	DRAWN	CHKD	AMENDMENT	EXAM	APPD	DATE	ISS
WA01650.01	SM	GJF	PROPERTY DESCRIPTION ADDED -69832999W001TCI	FA	JYW	25.03.09	3
WA01650.01	JZH	GJF	PROPERTY DESCRIPTION REVISED -69832999W001TCI	FA	JYW	03.04.09	4
WA01650.01	SS	GJF	FOR CONSTRUCTION - 69832999W002TCI	FA	JYW	15.05.09	5
WA01650	AD	-	AS BUILT 2nd CARRIER - SP70217940W02	GB	MS	18.06.10	6
WA01650.01	SS	GJF	AS BUILT - 70505505W001TCI	FA	JYW	16.07.10	7
WA09660.01	VK	BL	PRELIMINARY-30069070W0090SSNC-LTE700 / LTE1800	VC	OU	20.07.18	8

© Telstra Corporation Limited ABN 33 051 775 556 All rights reserved.

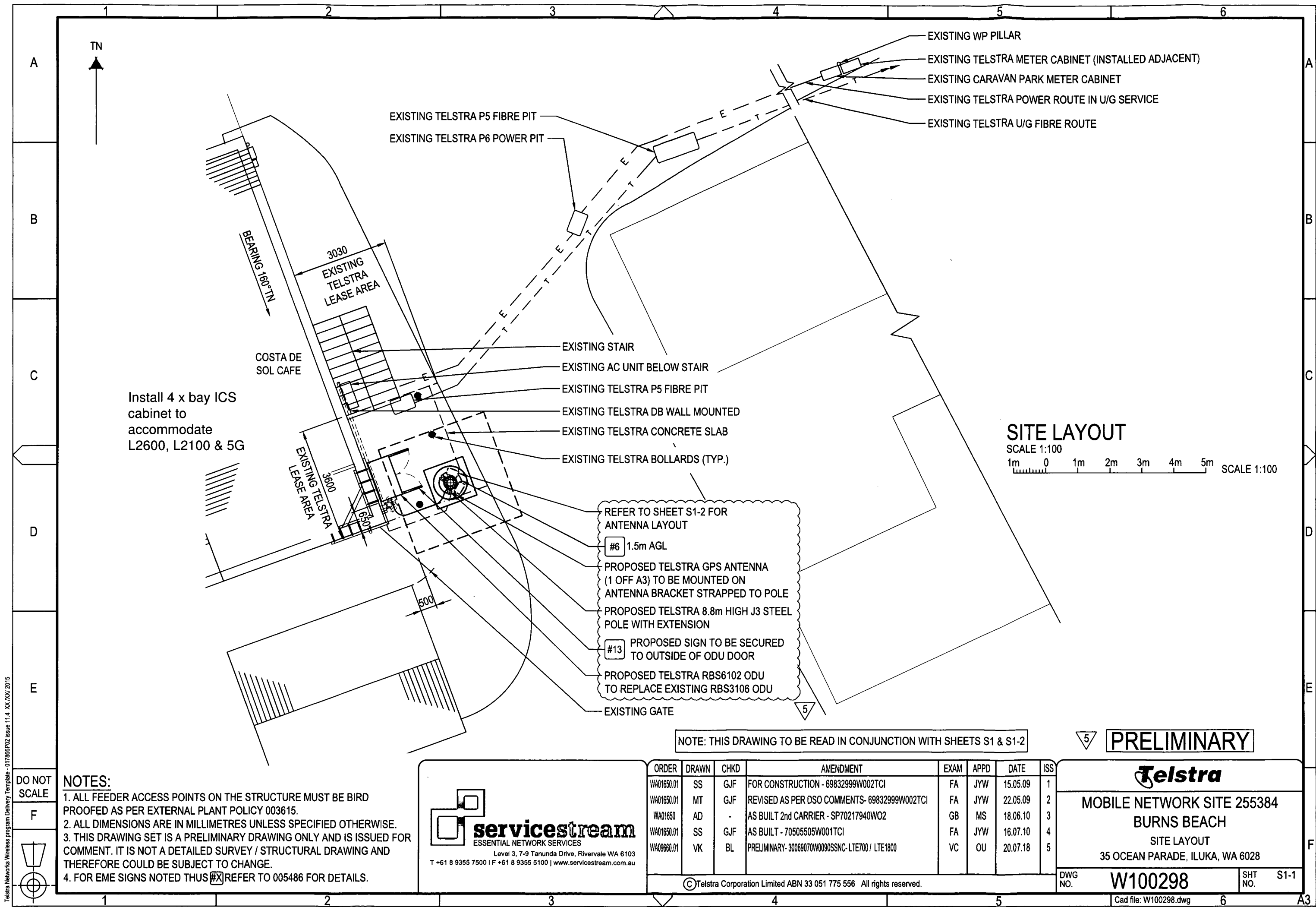
MOBILE NETWORK SITE 255384
BURNS BEACH

SITE ACCESS AND LOCALITY PLAN
35 OCEAN PARADE, ILUKA, WA 6028

DWG NO.	W100298	SHT NO.	S1
---------	---------	---------	----

Cad file: W100298.dwg

Telstra Networks Wireless program Delivery Template - 017868P02 issue 11.4 XX/XX/2015




- NOTES:**
1. ALL FEEDER ACCESS POINTS ON THE STRUCTURE MUST BE BIRD PROOFED AS PER EXTERNAL PLANT POLICY 003615.
 2. ALL DIMENSIONS ARE IN MILLIMETRES UNLESS SPECIFIED OTHERWISE.
 3. THIS DRAWING SET IS A PRELIMINARY DRAWING ONLY AND IS ISSUED FOR COMMENT. IT IS NOT A DETAILED SURVEY / STRUCTURAL DRAWING AND THEREFORE COULD BE SUBJECT TO CHANGE.
 4. FOR EME SIGNS NOTED THUS REFER TO 005486 FOR DETAILS.

**servicestream**
ESSENTIAL NETWORK SERVICES
Level 3, 7-9 Tanunda Drive, Rivervale WA 6103
T +61 8 9355 7500 | F +61 8 9355 5100 | www.servicestream.com.au

ORDER	DRAWN	CHKD	AMENDMENT	EXAM	APPD	DATE	ISS
WA01650.01	SS	GJF	FOR CONSTRUCTION - 69832999W002TCI	FA	JYW	15.05.09	1
WA01650.01	MT	GJF	REVISED AS PER DSO COMMENTS- 69832999W002TCI	FA	JYW	22.05.09	2
WA01650	AD	-	AS BUILT 2nd CARRIER - SP70217940W02	GB	MS	18.06.10	3
WA01650.01	SS	GJF	AS BUILT - 70505505W001TCI	FA	JYW	16.07.10	4
WA09660.01	VK	BL	PRELIMINARY- 30069070W0090SSNC- LTE700 / LTE1800	VC	OU	20.07.18	5

© Telstra Corporation Limited ABN 33 051 775 556 All rights reserved.

**PRELIMINARY**

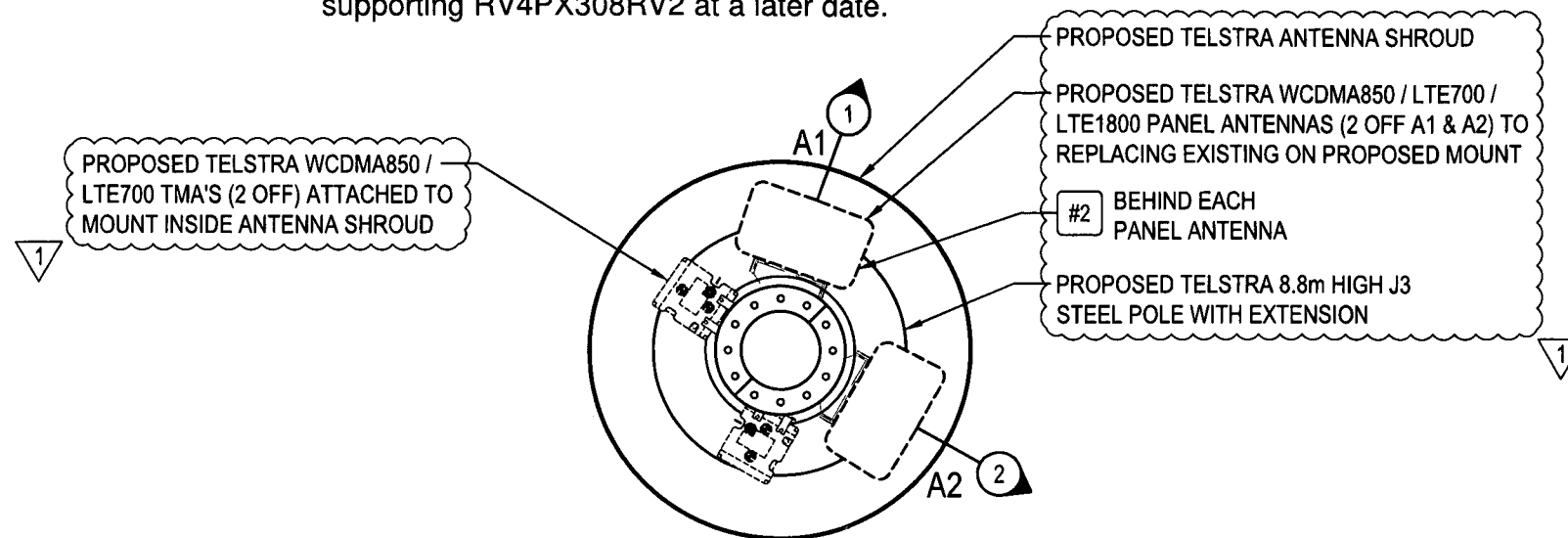
MOBILE NETWORK SITE 255384
BURNS BEACH
SITE LAYOUT
35 OCEAN PARADE, ILUKA, WA 6028

DWG NO.	W100298	SHT NO.	S1-1
---------	----------------	---------	------

Cad file: W100298.dwg

AX PROPOSED TELSTRA
PANEL ANTENNA

Will the Tuft Mount be capable of supporting RV4PX308RV2 at a later date.



ANTENNA LAYOUT AT EL 11.7m

SCALE 1:20

DO NOT
SCALE

F

NOTES:

1. ALL FEEDER ACCESS POINTS ON THE STRUCTURE MUST BE BIRD PROOFED AS PER EXTERNAL PLANT POLICY 003615.
2. ALL DIMENSIONS ARE IN MILLIMETRES UNLESS SPECIFIED OTHERWISE.
3. THIS DRAWING SET IS A PRELIMINARY DRAWING ONLY AND IS ISSUED FOR COMMENT. IT IS NOT A DETAILED SURVEY / STRUCTURAL DRAWING AND THEREFORE COULD BE SUBJECT TO CHANGE.
4. FOR EME SIGNS NOTED THUS #X REFER TO 005486 FOR DETAILS.



NOTE: THIS DRAWING TO BE READ IN CONJUNCTION WITH SHEETS S1 & S1-1

1 PRELIMINARY

ORDER	DRAWN	CHKD	AMENDMENT	EXAM	APPD	DATE	IS
WAO9660.01	VK	BL	PRELIMINARY- 30069070W0090SSNC- LTE700 / LTE1800	VC	OU	20.07.18	1

© Telstra Corporation Limited ABN 33 051 775 556 All rights reserved.

Telstra

MOBILE NETWORK SITE 255384
BURNS BEACH
ANTENNA LAYOUT
35 OCEAN PARADE, ILUKA, WA 6028

DWG
NO.

W100298

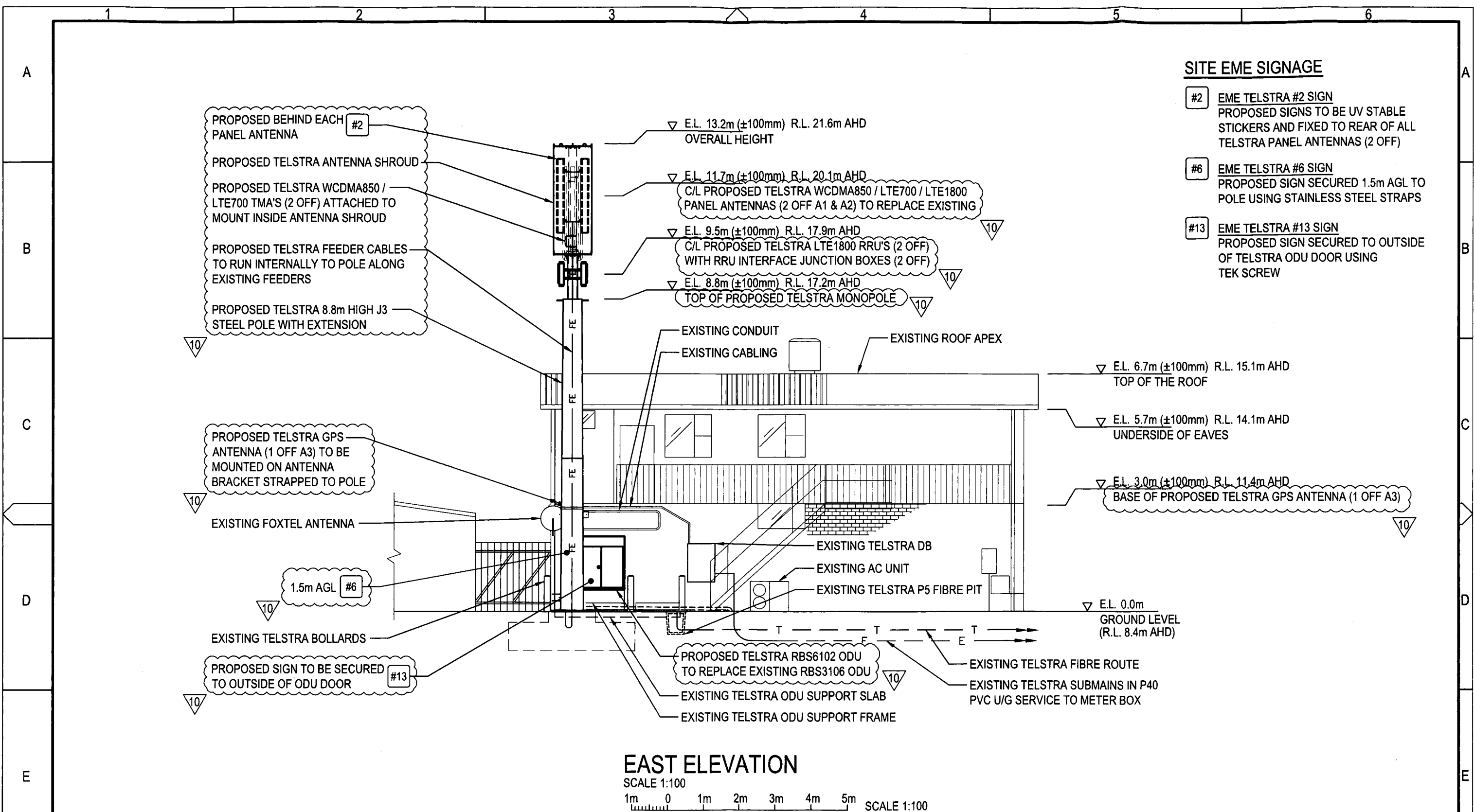
SHT NO.	
------------	--

S1-2

Cad file: W100298.dwg

6

A3



SITE EME SIGNAGE

- #2 EME TELSTRA #2 SIGN
PROPOSED SIGNS TO BE UV STABLE STICKERS AND FIXED TO REAR OF ALL TELSTRA PANEL ANTENNAS (2 OFF)
- #6 EME TELSTRA #6 SIGN
PROPOSED SIGN SECURED 1.5m AGL TO POLE USING STAINLESS STEEL STRAPS
- #13 EME TELSTRA #13 SIGN
PROPOSED SIGN SECURED TO OUTSIDE OF TELSTRA ODU DOOR USING TEK SCREW

DO NOT SCALE

F



NOTES:

- ALL FEEDER ACCESS POINTS ON THE STRUCTURE MUST BE BIRD PROOFED AS PER EXTERNAL PLANT POLICY 003615.
- ALL DIMENSIONS ARE IN MILLIMETRES UNLESS SPECIFIED OTHERWISE.
- THIS DRAWING SET IS A PRELIMINARY DRAWING ONLY AND IS ISSUED FOR COMMENT. IT IS NOT A DETAILED SURVEY / STRUCTURAL DRAWING AND THEREFORE COULD BE SUBJECT TO CHANGE.
- FOR EME SIGNS NOTED THUS REFER TO 005486 FOR DETAILS.



Level 3, 7-9 Tanunda Drive, Rivervale WA 6103
T +61 8 9355 7500 | F +61 8 9355 5100 | www.servicestream.com.au

ORDER	DRAWN	CHKD	AMENDMENT	EXAM	APPD	DATE	ISS
WA01650.01	SS	GJF	FOR CONSTRUCTION - 69832999W002TCI	FA	JYW	15.05.09	5
WA01650.01	MT	GJF	RELOCATED TELSTRA SUBMAINS - 69832999W002TCI	FA	JYW	22.05.09	6
WA01650.01	AD	-	AS BUILT 2nd CARRIER - SP70217940W02	GB	MS	18.06.10	7
WA01650.01	SS	GJF	AS BUILT - 70505505W001TCI	FA	JYW	16.07.10	8
WA01650.01	AD	-	ANTENNA INFO UPDATE - 70217940W001	BJW	BS	18.03.11	9
WA09660.01	VK	BL	PRELIMINARY - 30069070W0090SSNC - LTE700 / LTE1800	VC	OU	20.07.18	10

© Telstra Corporation Limited ABN 33 051 775 556 All rights reserved.

PRELIMINARY



MOBILE NETWORK SITE 255384
BURNS BEACH
EAST ELEVATION
35 OCEAN PARADE, ILUKA, WA 6028

DWG NO.

W100298

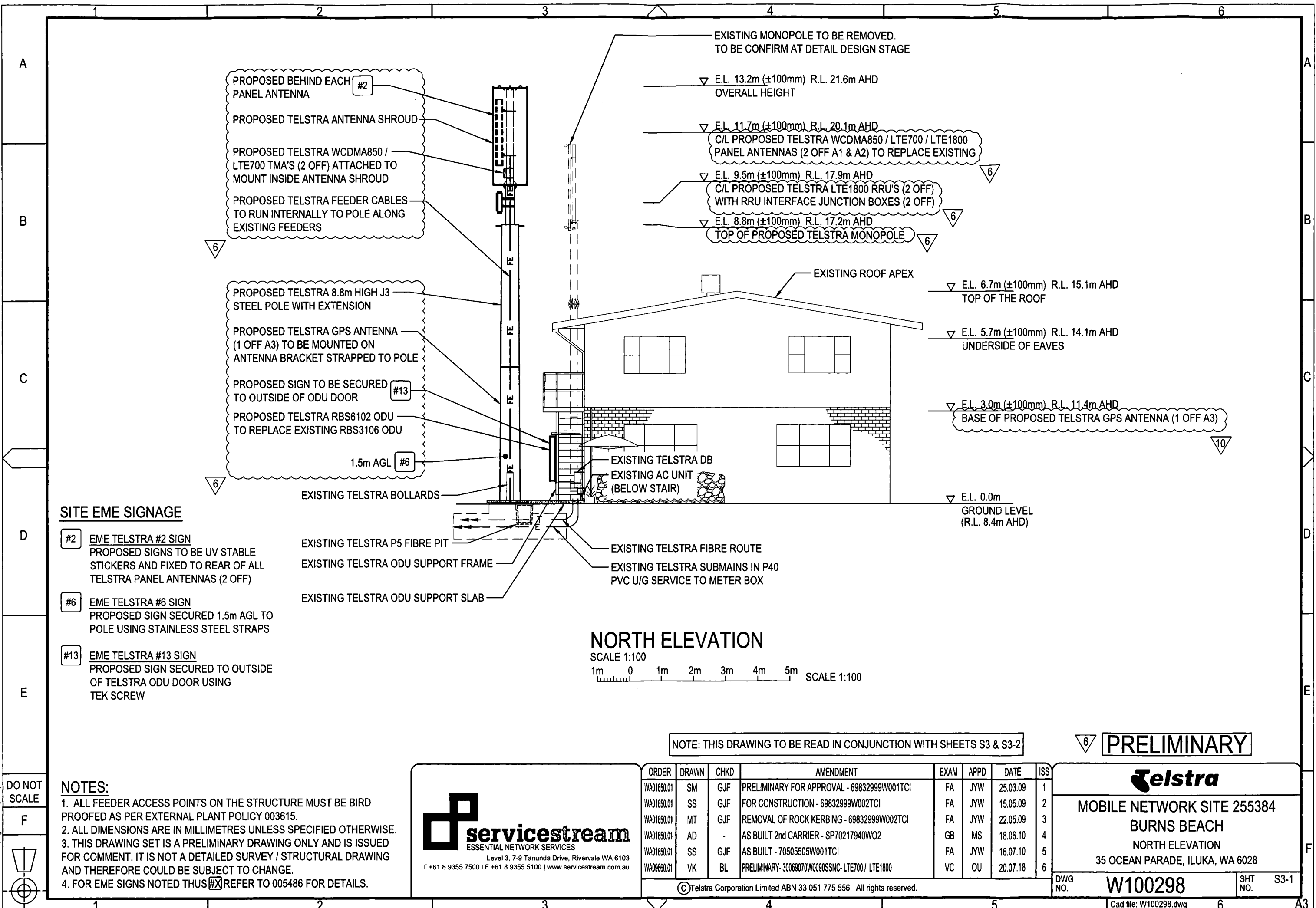
SHT NO.

S3

Cad file: W100298.dwg

6

A3

DO NOT
SCALE

F





BEFORE



AFTER

PLANNING SOLUTIONS | **PS**
URBAN & REGIONAL PLANNING

SCALE NTS @ A4
DATE 23 August 2018
FILE 100823 5568 Photomontage.dwg
REVISION 2/DR/REV/23.08.2018
1/DR/First Draft/22.08.2018

PHOTOMONTAGE - 1

35 OCEAN PARADE,
ILUKA, WA 6028

DISCLAIMER: THIS DOCUMENT IS AND REMAINS THE PROPERTY OF PLANNING SOLUTIONS AND MAY NOT BE COPIED IN WHOLE OR IN PART WITHOUT THE WRITTEN CONSENT OF PLANNING SOLUTIONS. ALL AREAS, DISTANCES AND ANGLES ARE APPROXIMATE ONLY AND ARE SUBJECT TO SURVEY.



BEFORE



AFTER

PLANNING SOLUTIONS | **PS**
URBAN & REGIONAL PLANNING

SCALE NTS @ A4
DATE 22 August 2018
FILE 100822 5568 Photomontage.dwg
REVISION 1/DR/First Draft/22.08.2018

PHOTOMONTAGE - 2

35 OCEAN PARADE,
ILUKA, WA 6028

DISCLAIMER: THIS DOCUMENT IS AND REMAINS THE PROPERTY OF PLANNING SOLUTIONS AND MAY NOT BE COPIED IN WHOLE OR IN PART WITHOUT THE WRITTEN CONSENT OF PLANNING SOLUTIONS. ALL AREAS, DISTANCES AND ANGLES ARE APPROXIMATE ONLY AND ARE SUBJECT TO SURVEY.



Environmental EME Report

Costa De Sol Cafe 35 Ocean Pde, BURNS WA 6028

This report provides a summary of Calculated RF EME Levels around the wireless base station

Date 6/7/2017

RFNSA Site No. 6028003

Introduction

The purpose of this report is to provide calculations of EME levels from the existing facilities at the site and any proposed additional facilities.

This report provides a summary of levels of radiofrequency (RF) electromagnetic energy (EME) around the wireless base station at Costa De Sol Cafe 35 Ocean Pde BURNS WA 6028. These levels have been calculated by Telstra using methodology developed by the Australian Radiation Protection and Nuclear Safety Agency (ARPANSA).

The maximum EME level calculated for the existing systems at this site is 1.24% of the public exposure limit and with proposed alterations to this site the calculated maximum EME level will be 4.98% of the public exposure limit.

The ARPANSA Standard

ARPANSA, an Australian Government agency in the Health and Ageing portfolio, has established a Radiation Protection Standard specifying limits for general public exposure to RF transmissions at frequencies used by wireless base stations. The Australian Communications and Media Authority (ACMA) mandates the exposure limits of the ARPANSA Standard.

How the EME is calculated in this report

The procedure used for these calculations is documented in the ARPANSA Technical Report "Radio Frequency EME Exposure Levels - Prediction Methodologies" which is available at <http://www.arpansa.gov.au>.

RF EME values are calculated at 1.5m above ground at various distances from the base station, assuming level ground.

The estimate is based on worst-case scenario, including:

- wireless base station transmitters for mobile and broadband data operating at maximum power
- simultaneous telephone calls and data transmission
- an unobstructed line of sight view to the antennas.

In practice, exposures are usually lower because:

- the presence of buildings, trees and other features of the environment reduces signal strength
- the base station automatically adjusts transmit power to the minimum required.

Maximum EME levels are estimated in 360° circular bands out to 500m from the base station.

These levels are cumulative and take into account emissions from all wireless base station antennas at this site.

The EME levels are presented in three different units:

- volts per metre (V/m) – the electric field component of the RF wave
- milliwatts per square metre (mW/m²) – the power density (or rate of flow of RF energy per unit area)
- percentage (%) of the ARPANSA Standard public exposure limit (the public exposure limit = 100%).

Results

The maximum EME level calculated for the existing systems at this site is 4.58 V/m; equivalent to 55.73 mW/m² or 1.24% of the public exposure limit.

The maximum EME level calculated for the existing and proposed systems at this site is 10.38 V/m; equivalent to 285.98 mW/m² or 4.98% of the public exposure limit.

Radio Systems at the Site

This base station currently has equipment for transmitting the following services:

Carrier	Radio Systems
Telstra	WCDMA850

It is proposed that this base station will have equipment for transmitting the following services:

Carrier	Radio Systems
Telstra	WCDMA850, LTE700 (proposed), LTE1800 (proposed)

Calculated EME Levels

This table provides calculations of RF EME at different distances from the base station for emissions from existing equipment alone and for emissions from existing equipment and proposed equipment combined.

Distance from the antennas at Costa De Sol Cafe 35 Ocean Pde in 360° circular bands	Maximum Cumulative EME Level at 1.5m above ground – all carriers at this site					
	Existing Equipment			Existing and Proposed Equipment		
	Electric Field V/m	Power Density mW/m ²	% ARPANSA exposure limits	Electric Field V/m	Power Density mW/m ²	% ARPANSA exposure limits
0m to 50m	4.097	44.52	0.99%	9.36	232.6	4.21%
50m to 100m	4.58	55.73	1.24%	10.38	285.98	4.98%
100m to 200m	3.13	25.98	0.58%	7.38	144.56	2.41%
200m to 300m	1.57	6.54	0.15%	3.68	35.83	0.6%
300m to 400m	1.063	3.0	0.067%	2.47	16.15	0.27%
400m to 500m	0.8	1.7	0.038%	1.85	9.071	0.15%
Maximum EME level	4.58	55.73	1.24	10.38	285.98	4.98
	60.26 m from the antennas at Costa De Sol Cafe 35 Ocean Pde			60.26 m from the antennas at Costa De Sol Cafe 35 Ocean Pde		

Calculated EME levels at other areas of interest

This table contains calculations of the maximum EME levels at selected areas of interest that have been identified through the consultation requirements of the Communications Alliance Ltd Deployment Code C564:2011 or via any other means. The calculations are performed over the indicated height range and include all existing and any proposed radio systems for this site.

Additional Locations		Height / Scan relative to location ground level	Maximum Cumulative EME Level All Carriers at this site Existing and Proposed Equipment		
			Electric Field V/m	Power Density mW/m ²	% of ARPANSA exposure limits
1	residential 1	0m to 5m	5.42	77.98	1.25%
2	Cafe	0m to 2m	1.38	5.021	0.083%
3	residential 2	0m to 5m	15.13	607.19	10.088%
4	palyground	0m to 3m	6.096	98.59	1.69%

RF EME Exposure Standard

The calculated EME levels in this report have been expressed as percentages of the ARPANSA RF Standard and this table shows the actual RF EME limits used for the frequency bands available. At frequencies below 2000 MHz the limits vary across the band and the limit has been determined at the Assessment Frequency indicated. The four exposure limit figures quoted are equivalent values expressed in different units – volts per metre (V/m), watts per square metre (W/m²), microwatts per square centimetre (μW/cm²) and milliwatts per square metre (mW/m²). Note: 1 W/m² = 100 μW/cm² = 1000 mW/m².

Radio Systems	Frequency Band	Assessment Frequency	ARPANSA Exposure Limit (100% of Standard)
LTE 700	758 – 803 MHz	750 MHz	37.6 V/m = 3.75 W/m ² = 375 μW/cm ² = 3750 mW/m ²
WCDMA850	870 – 890 MHz	900 MHz	41.1 V/m = 4.50 W/m ² = 450 μW/cm ² = 4500 mW/m ²
GSM900, LTE900, WCDMA900	935 – 960 MHz	900 MHz	41.1 V/m = 4.50 W/m ² = 450 μW/cm ² = 4500 mW/m ²
GSM1800, LTE1800	1805 – 1880 MHz	1800 MHz	58.1 V/m = 9.00 W/m ² = 900 μW/cm ² = 9000 mW/m ²
LTE2100, WCDMA2100	2110 – 2170 MHz	2100 MHz	61.4 V/m = 10.00 W/m ² = 1000 μW/cm ² = 10000 mW/m ²
LTE2300	2302 – 2400 MHz	2300 MHz	61.4 V/m = 10.00 W/m ² = 1000 μW/cm ² = 10000 mW/m ²
LTE2600	2620 – 2690 MHz	2600 MHz	61.4 V/m = 10.00 W/m ² = 1000 μW/cm ² = 10000 mW/m ²
LTE3500	3425 – 3575 MHz	3500 MHz	61.4 V/m = 10.00 W/m ² = 1000 μW/cm ² = 10000 mW/m ²

Further Information

The Australian Radiation Protection and Nuclear Safety Agency (ARPANSA) is a Federal Government agency incorporated under the Health and Ageing portfolio. ARPANSA is charged with responsibility for protecting the health and safety of people, and the environment, from the harmful effects of radiation (ionising and non-ionising).

Information about RF EME can be accessed at the ARPANSA website, <http://www.arpansa.gov.au>, including:

- Further explanation of this report in the document "Understanding the ARPANSA Environmental EME Report"
- The procedure used for the calculations in this report is documented in the ARPANSA Technical Report; "Radio Frequency EME Exposure Levels - Prediction Methodologies"
- the current RF EME exposure standard
Australian Radiation Protection and Nuclear Safety Agency (ARPANSA), 2002, 'Radiation Protection Standard: Maximum Exposure Levels to Radiofrequency Fields — 3 kHz to 300 GHz', Radiation Protection Series Publication No. 3, ARPANSA, Yallambie Australia.
[Printed version: ISBN 0-642-79400-6 ISSN 1445-9760] [Web version: ISBN 0-642-79402-2 ISSN 1445-9760]

The Australian Communications and Media Authority (ACMA) is responsible for the regulation of broadcasting, radiocommunications, telecommunications and online content. Information on EME is available at <http://emr.acma.gov.au>

The Communications Alliance Ltd Industry Code C564:2011 'Mobile Phone Base Station Deployment' is available from the Communications Alliance Ltd website, <http://commsalliance.com.au>.

Contact details for the Carriers (mobile phone companies) present at this site and the most recent version of this document are available online at the Radio Frequency National Site Archive, <http://www.rfnsa.com.au>.