



90 Boas Ave, Joondalup WA 6027  
PO Box 21, Joondalup WA 6919  
Ph: 08 9400 4000  
Fax: 08 9300 1383  
info@joondalup.wa.gov.au  
www.joondalup.wa.gov.au

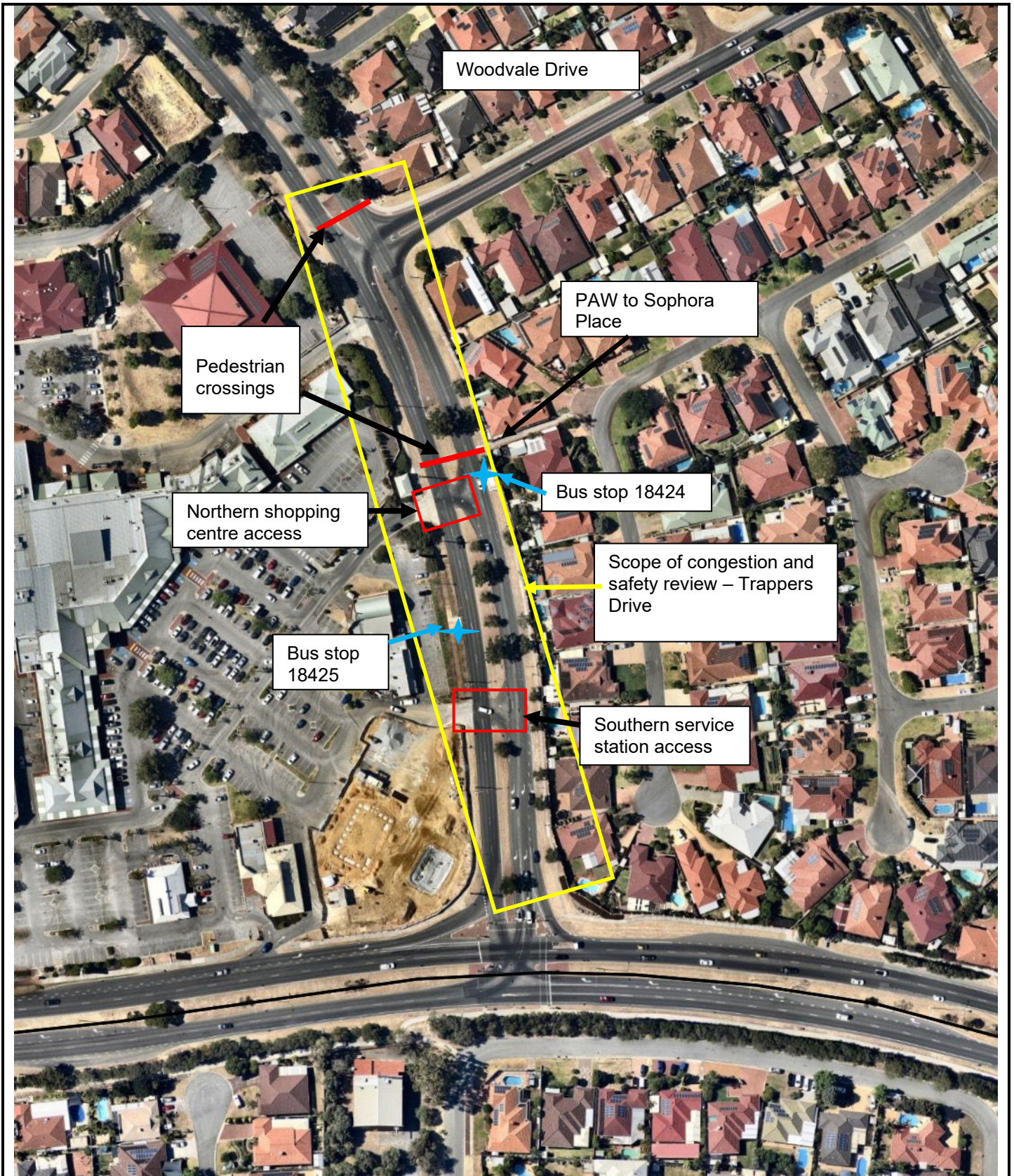




Scale(A4):1:15000

DISCLAIMER: While every care is taken to ensure the accuracy of this data, the City of Joondalup makes no representations or warranties about its accuracy, completeness or suitability for any particular purpose and disclaims all liability for all expenses, losses, damages and costs which you might incur as a result of the data being inaccurate or incomplete in any way and for any reason.

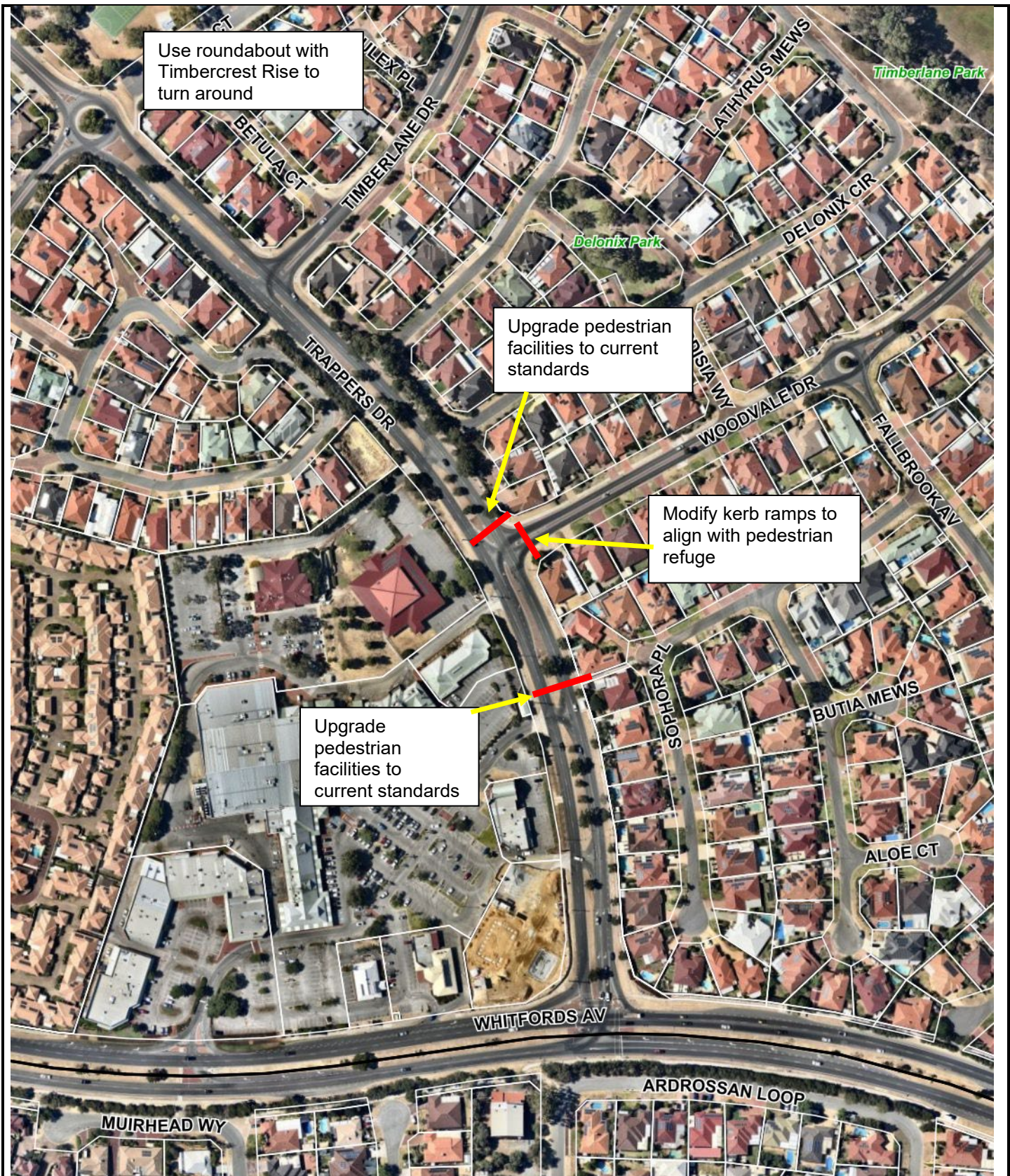
Locality Plan





 <p><b>City of Joondalup</b></p> <p>90 Boas Ave, Joondalup WA 6027          PO Box 21, Joondalup WA 6919          Ph: 08 9400 4000          Fax: 08 9300 1383  <a href="mailto:info@joondalup.wa.gov.au">info@joondalup.wa.gov.au</a>  <a href="http://www.joondalup.wa.gov.au">www.joondalup.wa.gov.au</a></p>		<p>Scale(A4):1:2000</p> <p>DISCLAIMER: While every care is taken to ensure the accuracy of this data, the City of Joondalup makes no representations or warranties about its accuracy, completeness or suitability for any particular purpose and disclaims all liability for all expenses, losses, damages and costs which you might incur as a result of the data being inaccurate or incomplete in any way and for any reason.</p>	<p><b>ATTACHMENT 2 – FOCUS AREA OF CONGESTION AND SAFETY REVIEW</b></p>
---	---	---	---





90 Boas Ave, Joondalup WA 6027  
PO Box 21, Joondalup WA 6919  
Ph: 08 9400 4000  
Fax: 08 9300 1383  
info@joondalup.wa.gov.au  
www.joondalup.wa.gov.au



Scale(A4):1:3000

DISCLAIMER: While every care is taken to ensure the accuracy of this data, the City of Joondalup makes no representations or warranties about its accuracy, completeness or suitability for any particular purpose and disclaims all liability for all expenses, losses, damages and costs which you might incur as a result of the data being inaccurate or incomplete in any way and for any reason.

## ATTACHMENT 3 – PREFERRED OPTION TO IMPROVE SAFETY FOR PEDESTRIANS/CYCLISTS AND MOTORISTS